

Blanco Ranger District
220 E Market Street
Meeker, CO 81641
(970) 878-4039 - Voice
(970) 878-5173 - Fax



United States Department of Agriculture



MARVINE TRAIL #1823

Difficulty: Moderate

Trail Use: Heavy; moderate after the lakes

Length: 10.8 miles

Elevation: Starts at 8,171 feet and ends at 10,955 feet (highest point 10,955 feet)

Elevation Gain: +2,965 feet – 181 feet = +2,784 feet

Open To: HIKING, HORSEBACK RIDING

Access:

- The Marvine Trail is located 35 miles east of Meeker.
- From Meeker, take State Highway 13 east for 1 mile.
- Where Highway 13 turns north, turn east on Rio Blanco County Road 8 for 28 miles.
- Turn south at Fritzlans Guest Ranch, cross the bridge and turn east on the Marvine Creek Road (Rio Blanco County Road 12) for 6 mile to the Marvine Trailhead parking area.

Trail Highlights:

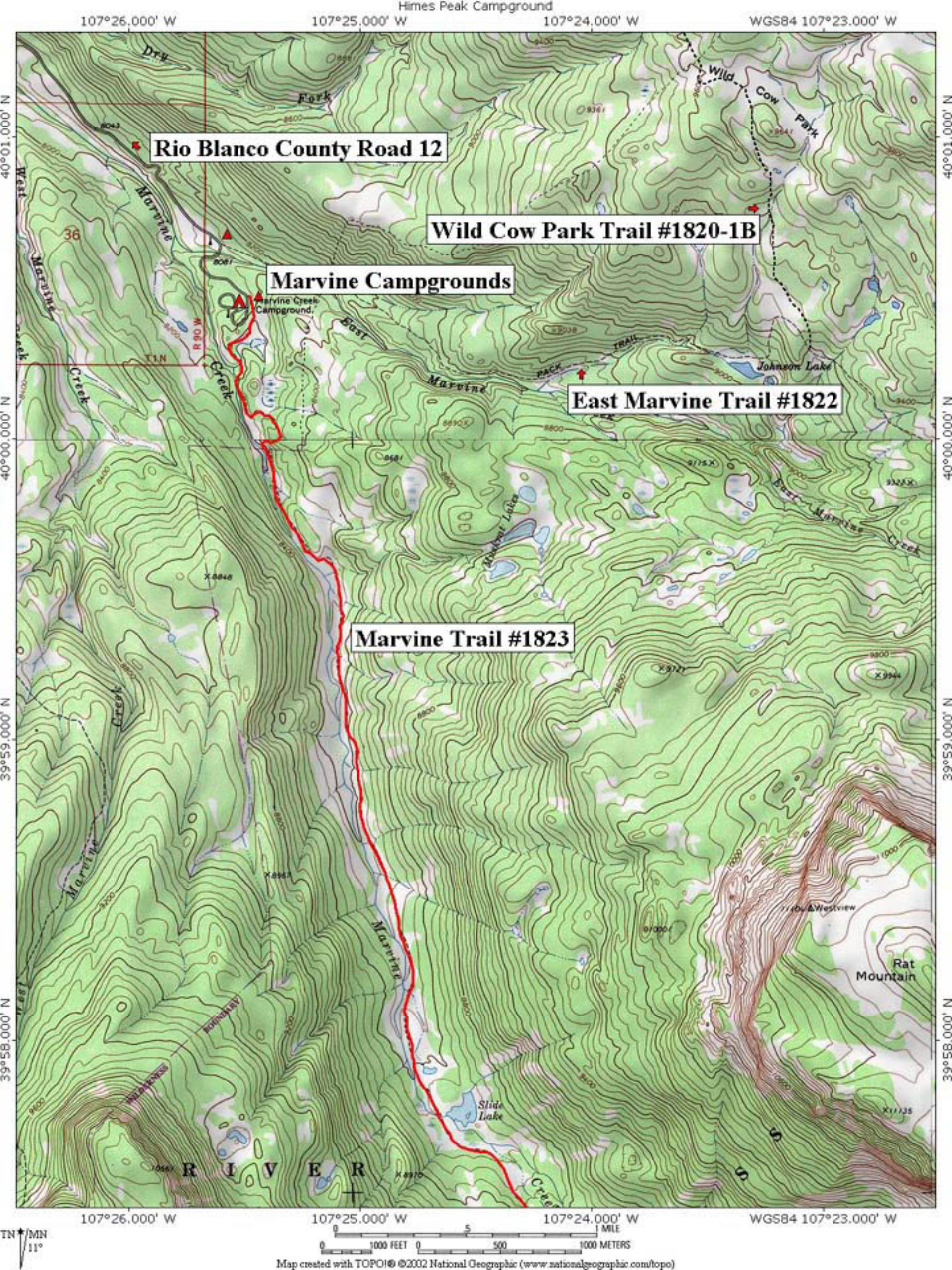
Marvine Trail goes south out of the parking lot entering the wilderness after about 1/2 mile. Following Marvine Creek through a narrow valley for 1/2 mile, the trail breaks out into wide grassy meadows flanked by aspen, spruce and fir to Slide Lake, 4 miles above the trailhead. You ford the creek at Slide Lake as the valley narrows with the Flat Tops plateau towering above the valley floor. The meadows change to small parks in between stands of aspen and mixed conifers. Six miles from the trailhead you reach lower Marvine Lake. The trail again fords the stream and follows the east side of the lake to upper Marvine. Undeveloped campsites are available along both lakes but make sure to camp at least 100 feet from the lake. Once above the lakes you enter a spruce and fir forest and climb rapidly for 4 miles onto the Flat Tops plateau. The Oyster Lake Trail is 11 miles from the origin of the Marvine Trail.

Important Information:

- **THIS TRAIL IS USED FOR MULTIPLE ACTIVITIES INCLUDING HIKING AND HORSEBACK RIDING. PLEASE RESPECT OTHER USERS.**
- **DOMESTIC CATTLE MAY BE GRAZING IN THE AREA.**

PACK IT IN - PACK IT OUT!! LEAVE NO TRACE!!

THIS MAP IS INTENDED FOR USE AS A GENERAL GUIDE ONLY, NOT FOR ACTUAL LAND NAVIGATION. THE WHITE RIVER NATIONAL FOREST STRONGLY SUGGESTS PURCHASING A TOPOGRAPHIC TRAIL MAP AND COMPASS PRIOR TO BEGINNING AN OFF-HIGHWAY VEHICLE TRIP.



Rio Blanco County Road 12

Wild Cow Park Trail #1820-1B

Marvine Campgrounds

East Marvine Trail #1822

Marvine Trail #1823

107°26.000' W Himes Peak Campground 107°25.000' W 107°24.000' W WGS84 107°23.000' W

40°01.000' N

40°01.000' N

40°00.000' N

40°00.000' N

39°59.000' N

39°59.000' N

39°58.000' N

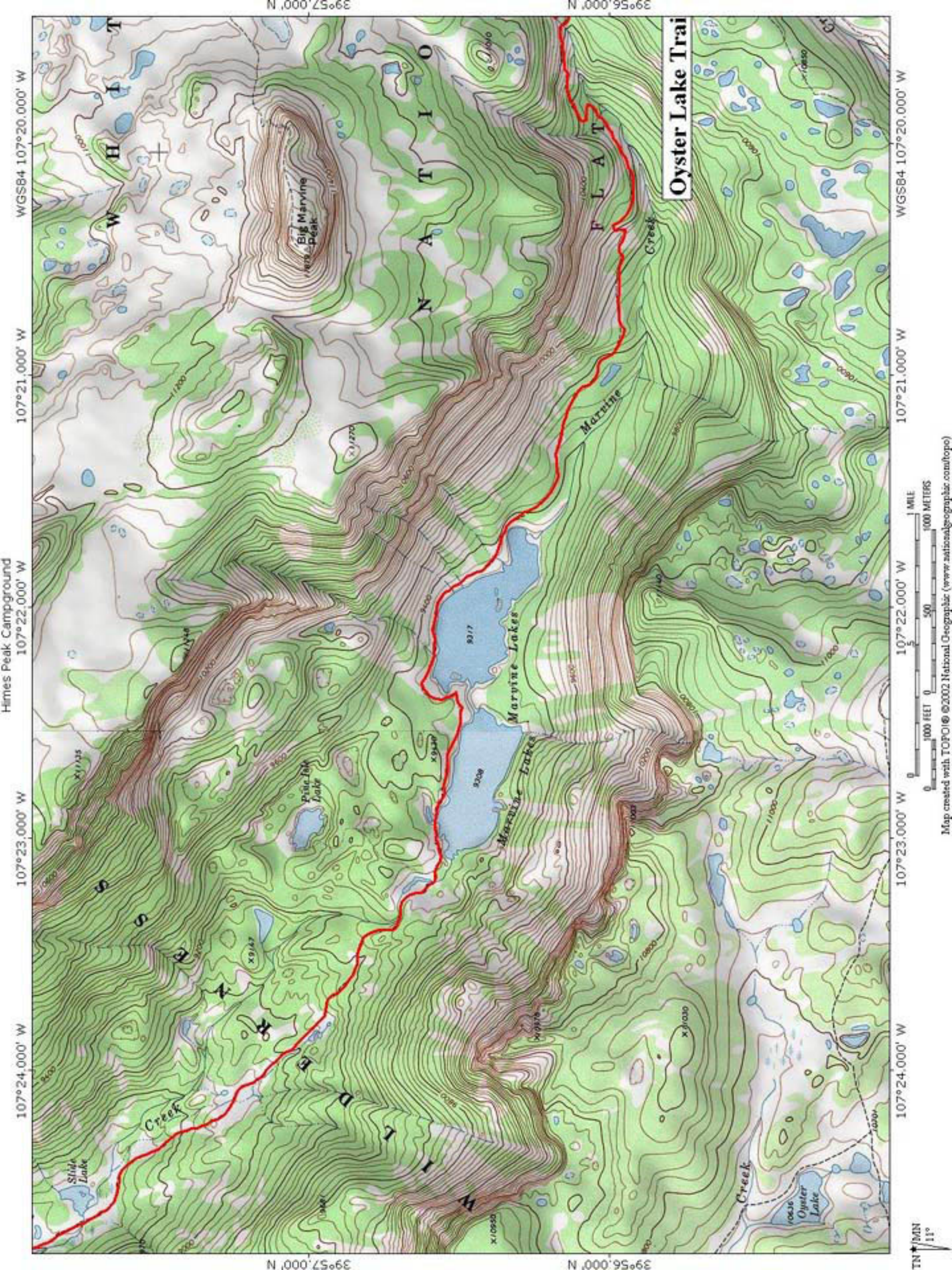
39°58.000' N

107°26.000' W 107°25.000' W 107°24.000' W WGS84 107°23.000' W

0 1000 FEET 0 500 1000 METERS

Map created with TOPO!® ©2002 National Geographic (www.nationalgeographic.com/topo)

TN/MN
11°



Himes Peak Campground
107°22.000' W

107°21.000' W

107°21.000' W

107°22.000' W

107°23.000' W

107°24.000' W

107°21.000' W

107°21.000' W

107°22.000' W

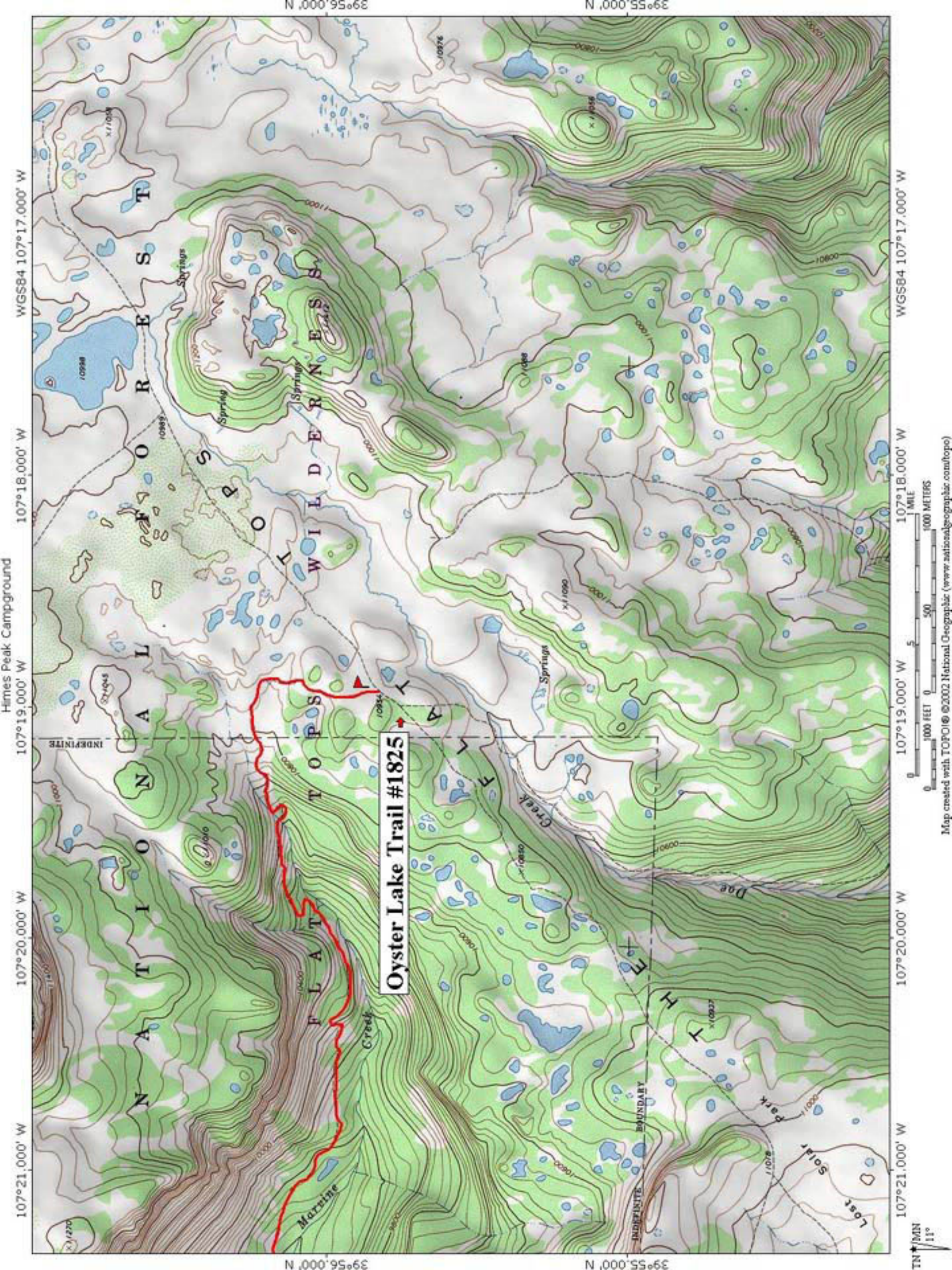
107°23.000' W

107°24.000' W



Map created with TOPOC © 2002 National Geographic (www.nationalgeographic.com/topo)

TN 11°



Oyster Lake Trail #1825