

Blanco Ranger District
220 E Market Street
Meeker, CO 81641
(970) 878-4039 - Voice
(970) 878-5173 - Fax



United States Department of Agriculture



NICHOLS CREEK TRAIL #1830

Difficulty: Moderate

Trail Use: Light

Length: 3.6 miles

Elevation: Starts 9,168 feet and ends 10,760 feet (highest point 10,790 feet)

Elevation Gain: +1,658 feet – 66 feet = +1,592 feet

Open To: HIKING, HORSEBACK RIDING

Access:

- Nichols Creek Trail is located 47.25 miles east of Meeker.
- From Meeker, take State Highway 13 east for 1 mile.
- Where Highway 13 turns north, turn east on Rio Blanco County Road 8 for 18 miles.
- Turn south on Rio Blanco County Road 10 for 2 miles, jog north for 1/4 mile, then east for 10 miles to the South Fork Campground and trailhead.
- Follow the South Fork Trail 16 miles up the South Fork Canyon past Budes Resort to the Nichols Trail junction.
- The trail is accessible from the Colorado River via the Coffee Pot Road, FDR #600 to Budes Resort. The Nichols Creek Trail lies 2 miles from the road up the South Fork Trail.

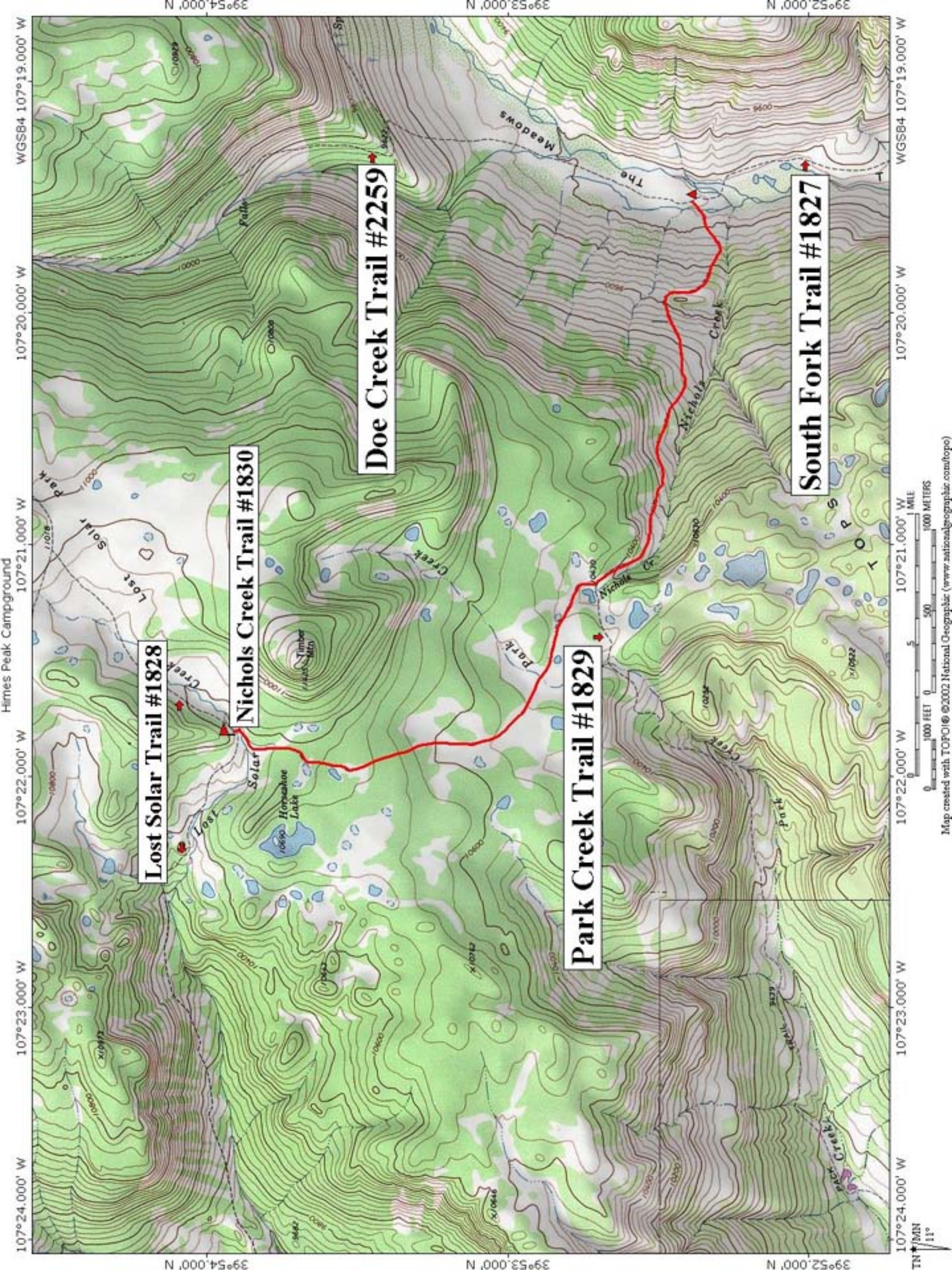
Trail Highlights:

The Nichols Creek Trail rises steeply for 1 1/2 miles out of South Fork Meadows staying mostly in open areas. The terrain levels off as the trail continues 1/4 mile to the Park Creek junction. From this junction, you gain elevation gradually as the trail continues through open parks bordered by stands of Englemann Spruce for another mile. The last mile of trail travels through stands of beetle-killed spruce until reaching the Lost Solar Trail below Lost Solar Park.

Important Information:

- **THIS TRAIL IS USED FOR MULTIPLE ACTIVITIES INCLUDING HIKING AND HORSEBACK RIDING. PLEASE RESPECT OTHER USERS.**
- **DOMESTIC CATTLE MAY BE GRAZING IN THE AREA.**
- **PLEASE RESPECT PRIVATE PROPERTY.**

THIS MAP IS INTENDED FOR USE AS A GENERAL GUIDE ONLY, NOT FOR ACTUAL LAND NAVIGATION. THE WHITE RIVER NATIONAL FOREST STRONGLY SUGGESTS PURCHASING A TOPOGRAPHIC TRAIL MAP AND COMPASS PRIOR TO BEGINNING AN OFF-HIGHWAY VEHICLE TRIP.



Lost Solar Trail #1828

Nichols Creek Trail #1830

Park Creek Trail #1829

Doe Creek Trail #2259

South Fork Trail #1827

TN
11°

107°24.000' W

107°23.000' W

107°22.000' W

107°21.000' W

107°20.000' W

107°19.000' W

107°24.000' W

107°23.000' W

107°22.000' W

107°21.000' W

107°20.000' W

107°19.000' W

WGS84 107°19.000' W

39°54.000' N

39°53.000' N

39°52.000' N

WGS84 107°19.000' W

WGS84 107°19.000' W

Map created with TOPOL© ©2002 National Geographic (www.nationalgeographic.com/topo)