

Blanco Ranger District
220 E Market Street
Meeker, CO 81641
(970) 878-4039 - Voice
(970) 878-5173 - Fax



United States Department of Agriculture



OYSTER LAKE TRAIL #1825

Difficulty: Moderate

Trail Use: Light

Length: 25.6 miles

Elevation: Starts 6,995 feet and ends 11,003 feet (highest point 11,195 feet)

Elevation Gain: +5,826 feet – 1,818 feet = +4,008 feet

Open To: HIKING, HORSEBACK RIDING

Access:

- Oyster Lake Trail is located 22 miles east of Meeker.
- From Meeker, take State Highway 13 east for 1 mile.
- Where Highway 13 turns north, turn east on Rio Blanco County Road 8 for 20 miles.
- Turn south on Rio Blanco County Road 17 (Buford-New Castle Road) for 1 mile to the oyster Lake Trailhead. Limited parking is available.

Trail Highlights:

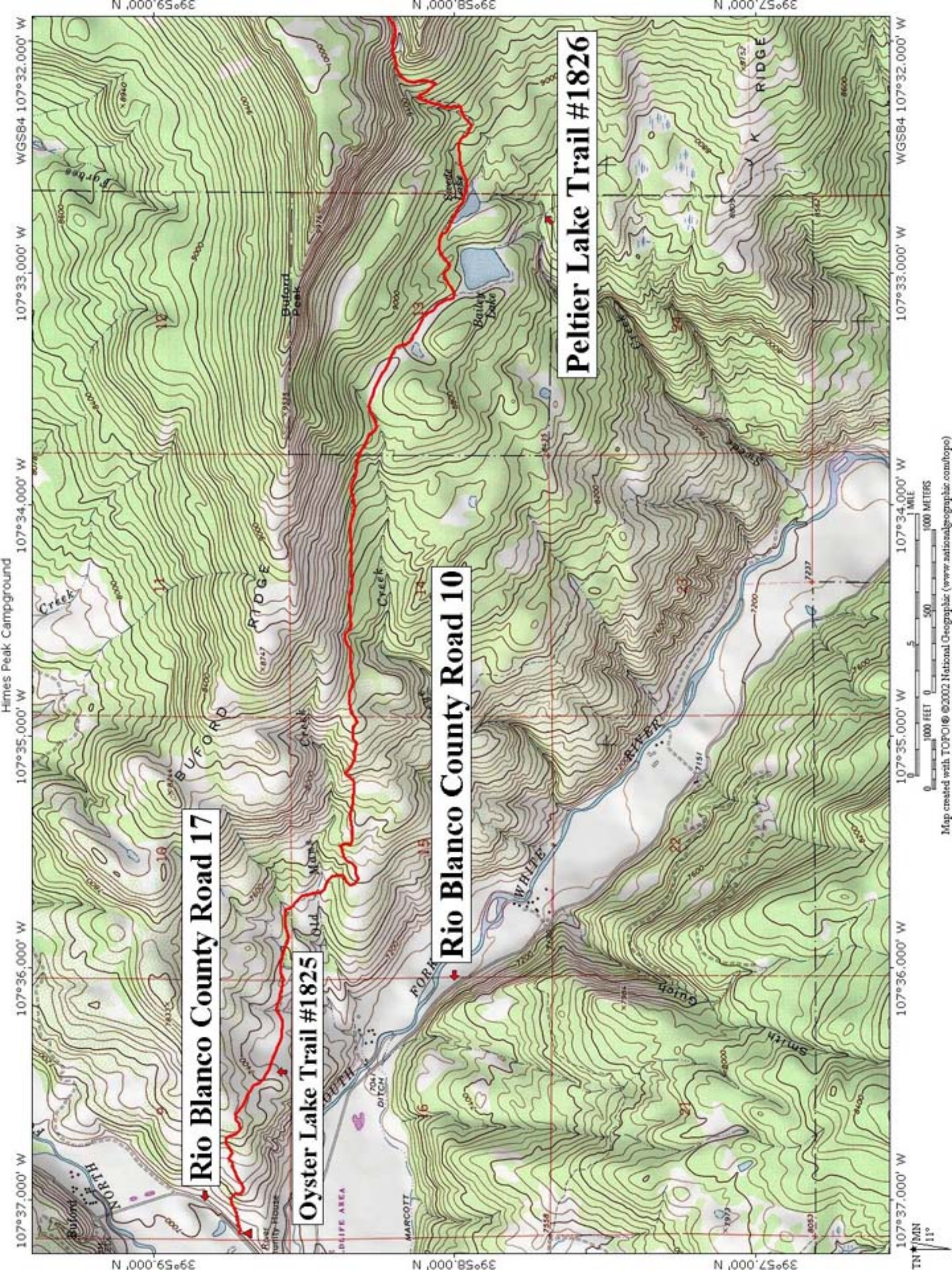
For the first four miles, the trail crosses private property. One mile into the National Forest lies Bailey Lake and right above Bailey Lake is Swede Lake, both excellent trout fishing. For the next two miles you climb onto Nimerick point on the westernmost part of the Flat Tops plateau. The cover has changed from oak brush to aspen and grassy parks. The trail turns south following the rim above the South Fork of the White River before turning east near Clam Lake. The dense timber begins to give way to larger parks as you travel the four miles to Oyster Lake. Two and on-half miles east of Oyster Lake lies the large meadows at the lead waters of Lost Solar Creek. The next 2.5 miles of trail follows a timber-covered ridge until you emerge out onto the alpine tundra for the remaining 5 miles to the Wall Lake Trail. The major peaks on the Flat Tops plateau are visible during the last 5-mile stretch.

Important Information:

- **THIS TRAIL IS USED FOR MULTIPLE ACTIVITIES INCLUDING HIKING AND HORSEBACK RIDING. PLEASE RESPECT OTHER USERS.**
- **DOMESTIC CATTLE MAY BE GRAZING IN THE AREA.**
- **PLEASE RESPECT PRIVATE PROPERTY.**

PACK IT IN - PACK IT OUT!! LEAVE NO TRACE!!

THIS MAP IS INTENDED FOR USE AS A GENERAL GUIDE ONLY, NOT FOR ACTUAL LAND NAVIGATION. THE WHITE RIVER NATIONAL FOREST STRONGLY SUGGESTS PURCHASING A TOPOGRAPHIC TRAIL MAP AND COMPASS PRIOR TO BEGINNING AN OFF-HIGHWAY VEHICLE TRIP.

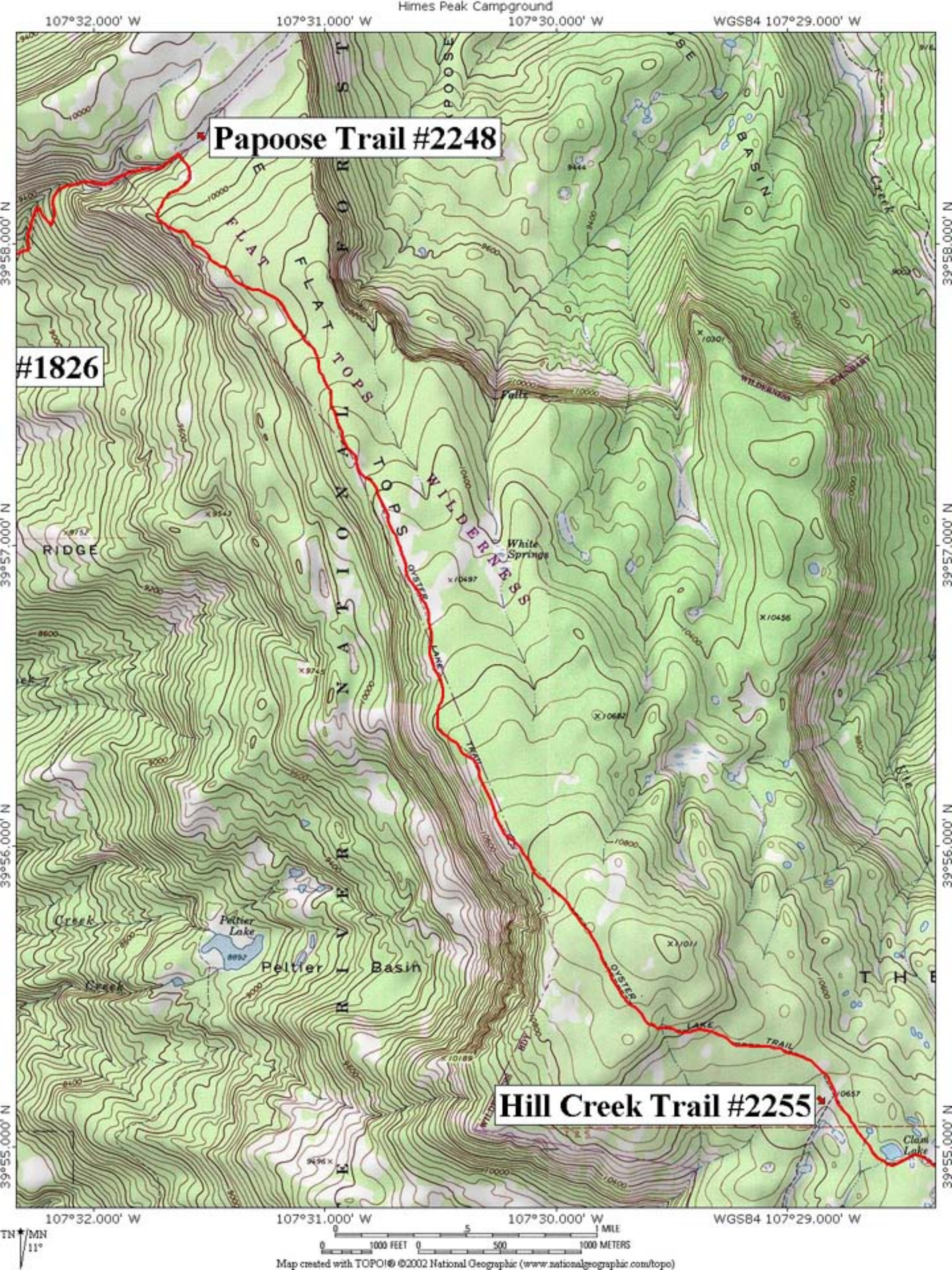


Rio Blanco County Road 17

Oyster Lake Trail #1825

Rio Blanco County Road 10

Peltier Lake Trail #1826



Papoose Trail #2248

#1826

Hill Creek Trail #2255

TN
MN
11°

Map created with TOPO!® ©2002 National Geographic (www.nationalgeographic.com/topo)

