

Blanco Ranger District  
220 E Market Street  
Meeker, CO 81641  
(970) 878-4039 - Voice  
(970) 878-5173 - Fax



United States Department of Agriculture



---

---

## **PELTIER LAKE TRAIL #1826**

**Difficulty:** More Difficult

**Trail Use:** Light

**Length:** 6.5 miles

**Elevation:** Starts 7,559 feet and ends 8,806 feet (highest point 8,895 feet)

**Elevation Gain:** +2,018 feet – 771 feet = +1,247 feet

**Open To:** HIKING, HORSEBACK RIDING

### **Access:**

- Peltier Lake Trail is located 21 miles east of Meeker.
- From Meeker, take State Highway 13 east for 1 mile.
- Where Highway 13 turns north, turn east on Rio Blanco County Road 8 for 18 miles.
- Turn south on County Road 10 for two miles, jog left 1/4 mile, then right for 8 miles to the Peltier Lake Trailhead. Parking is available 100 yards up the road past the cattle guard.

### **Trail Highlights:**

Starting up the Peltier Lake Trail, you are on an oakbrush covered hillside that gradually changes to aspen as you climb the winding trail, 3 1/2 miles to Peltier Lake. Leaving Peltier Lake, you follow the contour three miles to Bailey Lake through aspen stands, sagebrush, and grass covered slopes. The Oyster Lake Trail junction is 6 1/2 miles from the trailhead near Bailey Lake.

### **Important Information:**

- **THIS TRAIL IS USED FOR MULTIPLE ACTIVITIES INCLUDING HIKING AND HORSEBACK RIDING. PLEASE RESPECT OTHER USERS.**
- **DOMESTIC CATTLE MAY BE GRAZING IN THE AREA.**
- **PLEASE RESPECT PRIVATE PROPERTY.**
- **PACK IT IN - PACK IT OUT!! LEAVE NO TRACE!!**

*THIS MAP IS INTENDED FOR USE AS A GENERAL GUIDE ONLY, NOT FOR ACTUAL LAND NAVIGATION. THE WHITE RIVER NATIONAL FOREST STRONGLY SUGGESTS PURCHASING A TOPOGRAPHIC TRAIL MAP AND COMPASS PRIOR TO BEGINNING AN OFF-HIGHWAY VEHICLE TRIP.*

107°34.000' W

107°33.000' W

107°32.000' W

WGS84 107°31.000' W

39°58.000' N

39°57.000' N

39°56.000' N

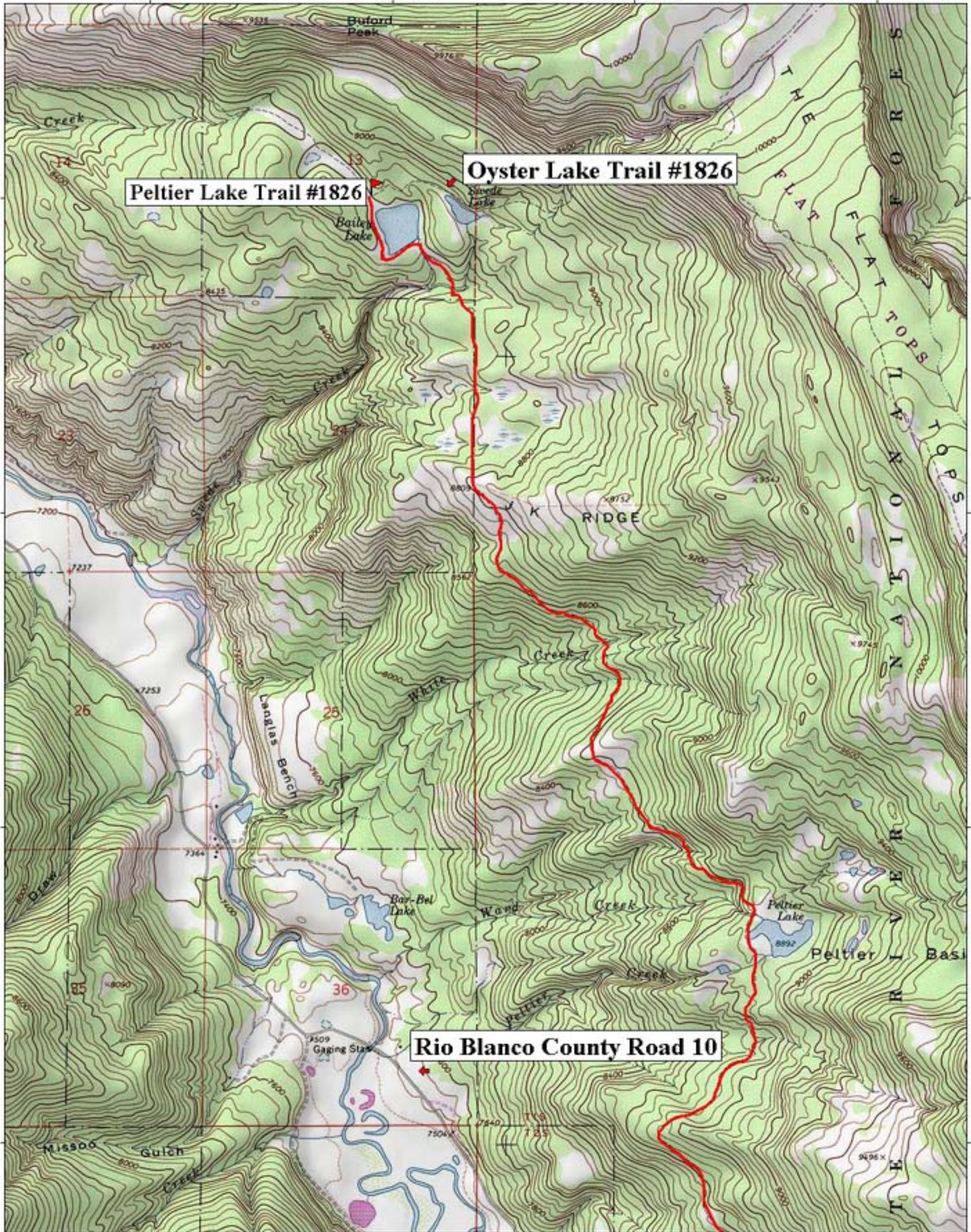
39°55.000' N

39°58.000' N

39°57.000' N

39°56.000' N

39°55.000' N



**Peltier Lake Trail #1826**

**Oyster Lake Trail #1826**

**Rio Blanco County Road 10**

107°34.000' W

107°33.000' W

107°32.000' W

WGS84 107°31.000' W

TN  
MN  
11°



107°33.000' W

107°32.000' W

107°31.000' W

WGS84 107°30.000' W

**Rio Blanco County Road 10**

**Hill Creek Trail #2255**

39°55.000' N

39°54.000' N

39°53.000' N

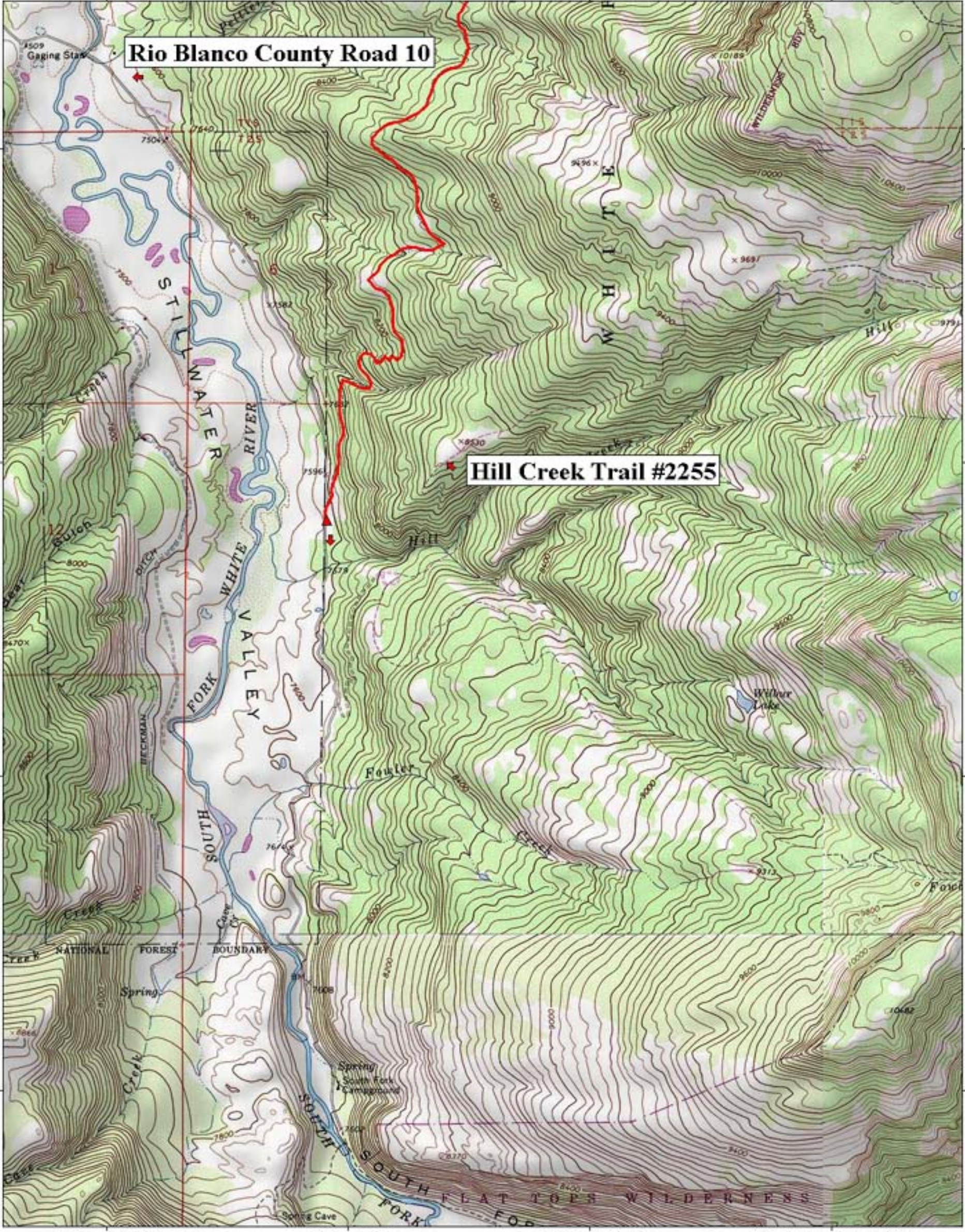
39°52.000' N

39°55.000' N

39°54.000' N

39°53.000' N

39°52.000' N



107°33.000' W

107°32.000' W

107°31.000' W

WGS84 107°30.000' W

TN/MN  
11°

