

Blanco Ranger District
220 E Market Street
Meeker, CO 81641
(970) 878-4039 - Voice
(970) 878-5173 - Fax



United States Department of Agriculture



PICKET PIN-LILY POND TRAIL # 1811

Difficulty: More Difficult

Trail Use: Low

Length: 8.16 miles

Elevation: Starts at 8,758 feet at the Picket Pin end and ends at 8,649 feet at the Lily Pond end.
(highest point 10,703 feet)

Elevation Gain: +2,012 feet – 2,114 feet = -102 feet

Open To: HIKING, HORSEBACK RIDING

Access:

- From Meeker, take State Highway 13 east for one mile.
- Turn east on Rio Blanco County Road 8 for 39 miles to the Lily Pond Trailhead.
- To get to the Picket Pin trailhead, turn right onto Trappers Lake Road for 5 miles.

Trail Highlights:

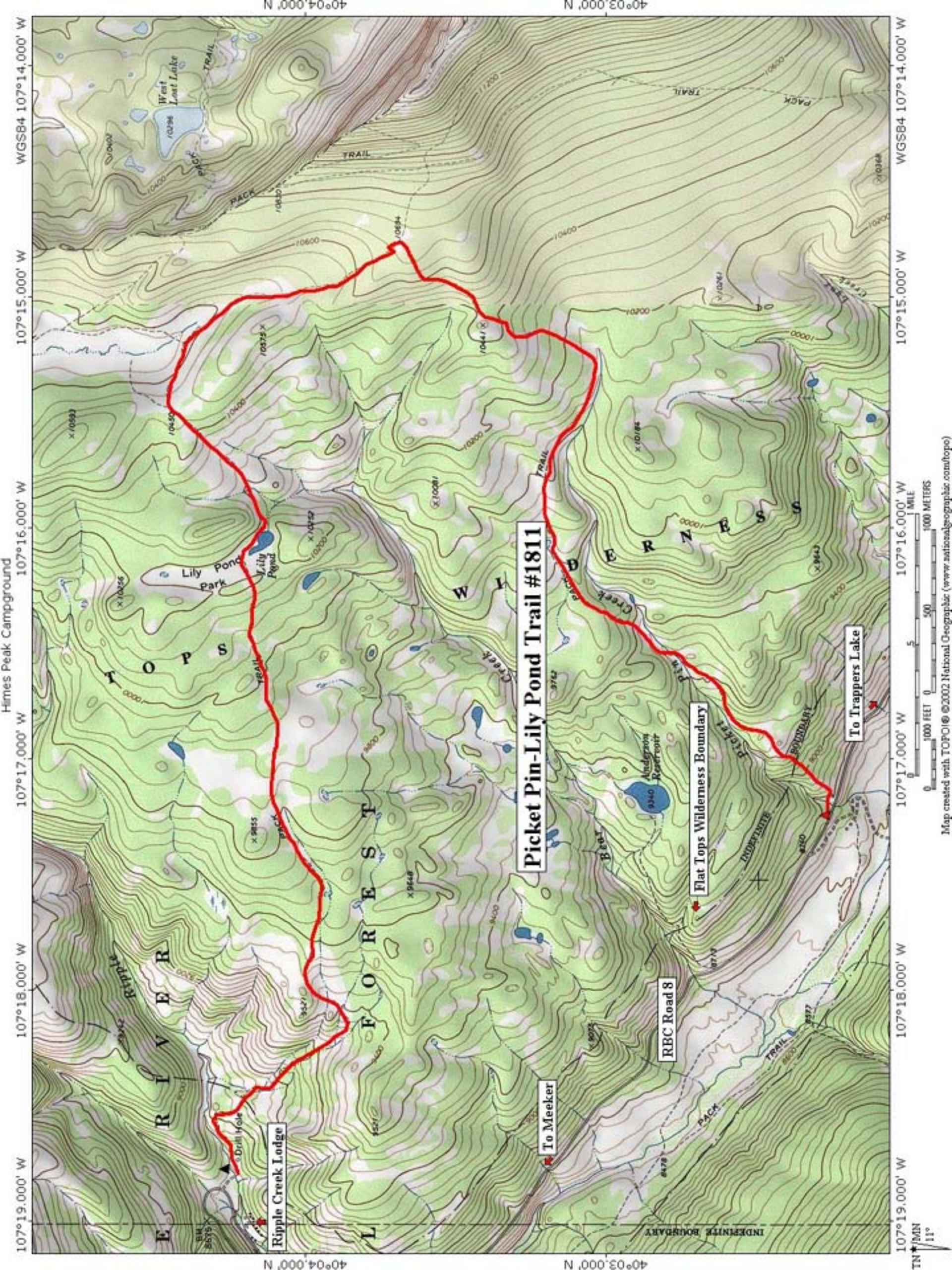
- Both trails connect the county road with the Chinese Wall Trail in Picket Pin Park.
- Lily Pond Trail climbs 4 1/2 miles through stands of aspen, open parks, and scattered patches of spruce, fir and dead spruce. The trail gets its name from the water lilies that bloom in a pond about 3 1/2 miles up the trail.
- Picket Pin Trail follows Picket Pin Creek for two miles before angling cross country to enter the east end of Picket Pin Park. This traverses dense spruce and fir forests with fewer aspen parks than the Lily Pond Trail.

Important Information:

- **THIS TRAIL IS IN THE WILDERNESS. PLEASE OBEY ALL WILDERNESS REGULATIONS.**
- **THIS TRAIL IS USED FOR MULTIPLE ACTIVITIES TO INCLUDE HIKING AND HORSEBACK RIDING. PLEASE RESPECT OTHER USERS.**
- **DOMESTIC CATTLE MAY BE GRAZING IN THE AREA.**

PACK IT IN - PACK IT OUT!! LEAVE NO TRACE!!

THIS MAP IS INTENDED FOR USE AS A GENERAL GUIDE ONLY, NOT FOR ACTUAL LAND NAVIGATION. THE WHITE RIVER NATIONAL FOREST STRONGLY SUGGESTS PURCHASING A TOPOGRAPHIC TRAIL MAP AND COMPASS PRIOR TO BEGINNING AN OFF-HIGHWAY VEHICLE TRIP.



WGS84 107°14.000' W
WGS84 107°15.000' W
WGS84 107°16.000' W
WGS84 107°17.000' W
WGS84 107°18.000' W
WGS84 107°19.000' W

40°03.000' N
40°04.000' N
40°03.000' N
40°04.000' N

Picket Pin-Lily Pond Trail #1811

Flat Tops Wilderness Boundary

To Trappers Lake

RBC Road 8

To Meeker

Ripple Creek Lodge

Map created with TOPOC © 2002 National Geographic (www.nationalgeographic.com/topo)



TN
11°