

Blanco Ranger District
220 E Market Street
Meeker, CO 81641
(970) 878-4039 - Voice
(970) 878-5173 - Fax



United States Department of Agriculture



SALT PARK TRAIL # 1114

Difficulty: More Difficult

Trail Use: Light

Length: 5.5 miles on White River National Forest, 13.3 miles entire trail

Elevation: Starts at 8,265 feet and ends at 9,734 feet (highest point 10,206 feet)

Elevation Gain: +3,838 feet – 2,369 feet = +1,469 feet

Open To: HIKING, HORSEBACK RIDING

Access:

- The Salt Park Trail is located 46 miles northeast of Meeker.
- From Meeker, take State Highway 13 east for 34 miles.
- Turn south at the Morapos Creek Jct. (Moffat County Road 41) for 12 miles to the forest boundary.
- The Morapos Trailhead campground is 1/4 mile ahead on the east. The trailhead is 300 yards further at the end of the road.
- The Salt Park trail begins at the northeast corner of the parking lot.

Trail Highlights:

The trail follows an old road for the first 3 1/2 miles through aspen stands and open parks, crossing several small or intermittent streams. It then leaves the bottom and climbs roughly 2 miles to the Routt National Forest boundary and enters the west end of Salt Park. The trail then turns south for 2 miles to the southern boundary of the Routt Forest and follows the forest boundary for 3.2 miles passing the west fork of Lost Park Trail #1805. At the east fork of Lost Park trail, it becomes #1114-1A for 2.6 miles and ends at the Deadhorse-Long Park loop (FDR #230).

Important Information:

- **THIS TRAIL IS USED FOR MULTIPLE ACTIVITIES INCLUDING HIKING AND HORSEBACK RIDING. PLEASE RESPECT OTHER USERS.**
- **DOMESTIC CATTLE MAY BE GRAZING IN THE AREA.**

PACK IT IN - PACK IT OUT!! LEAVE NO TRACE!!

THIS MAP IS INTENDED FOR USE AS A GENERAL GUIDE ONLY, NOT FOR ACTUAL LAND NAVIGATION. THE WHITE RIVER NATIONAL FOREST STRONGLY SUGGESTS PURCHASING A TOPOGRAPHIC TRAIL MAP AND COMPASS PRIOR TO BEGINNING AN OFF-HIGHWAY VEHICLE TRIP.

107°34.000' W

107°33.000' W

107°32.000' W

WGS84 107°31.000' W

40°12.000' N

40°12.000' N

Rio Blanco CR 53/Moffat CR 41

Forest Boundary

**Private
Property**

Wilson Mesa Trail #1800

Morapos Trail #1801

40°11.000' N

40°11.000' N

40°10.000' N

40°10.000' N

40°09.000' N

40°09.000' N

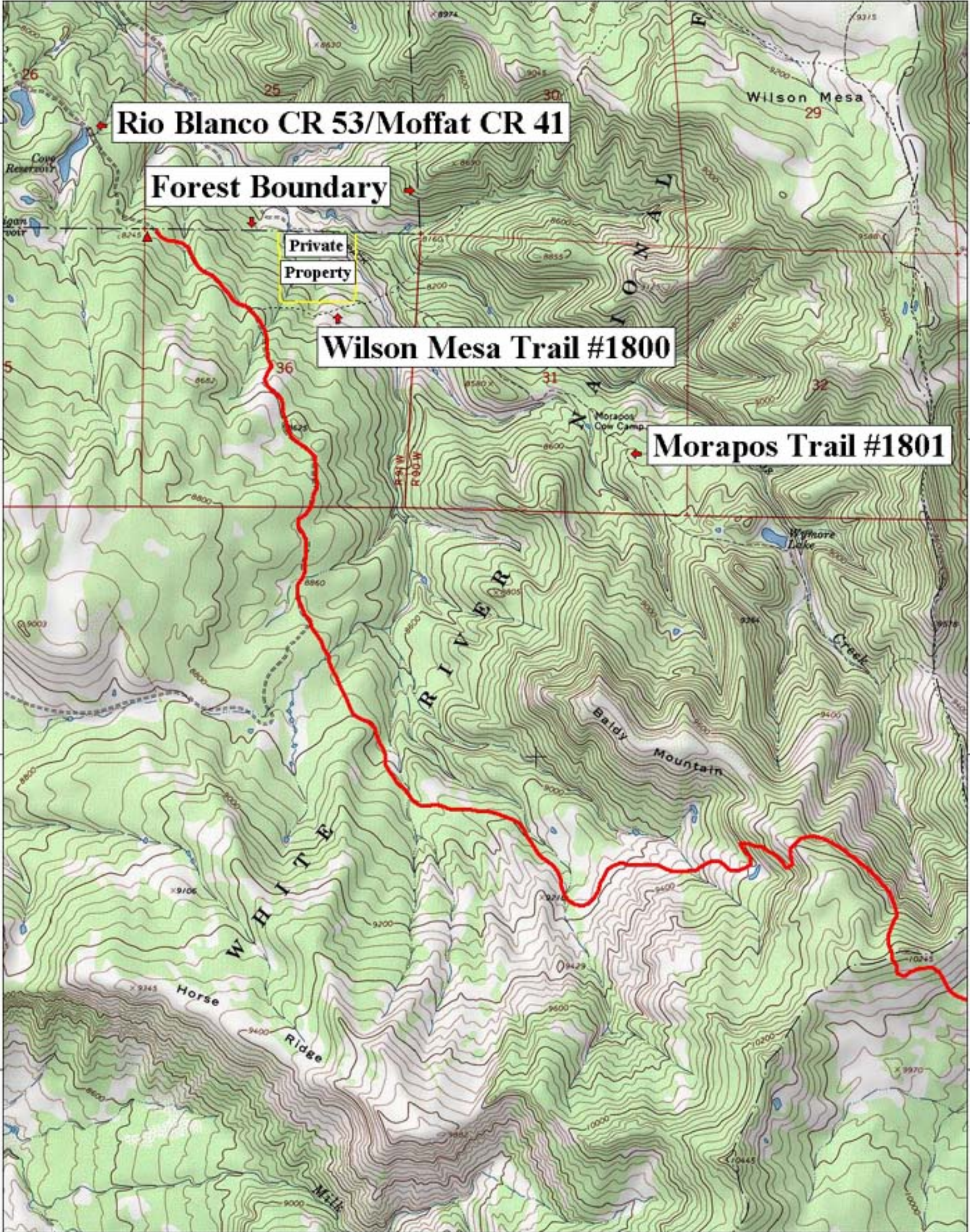
107°34.000' W

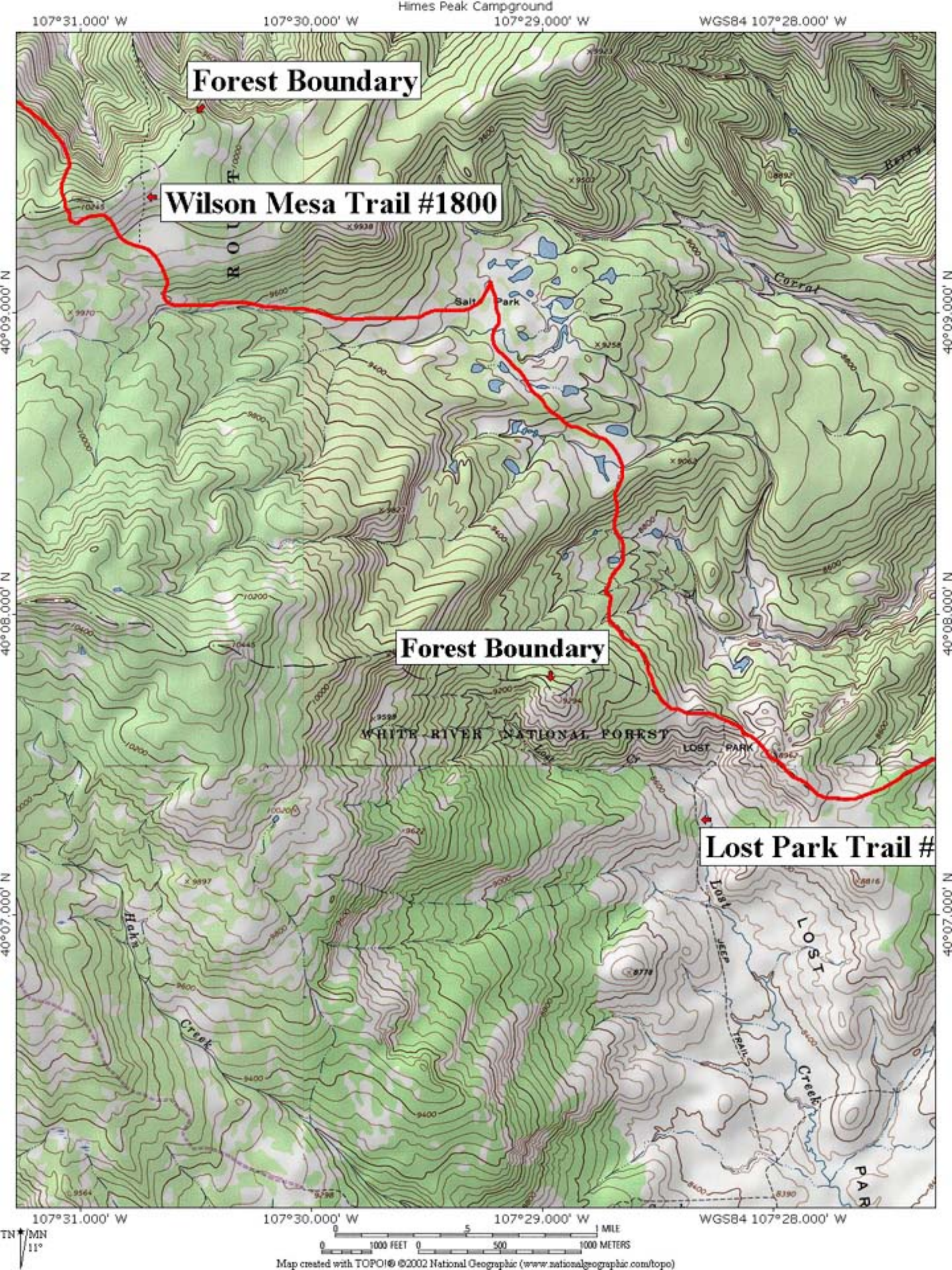
107°33.000' W

107°32.000' W

WGS84 107°31.000' W

TN
MN
111°





Forest Boundary

Wilson Mesa Trail #1800

Forest Boundary

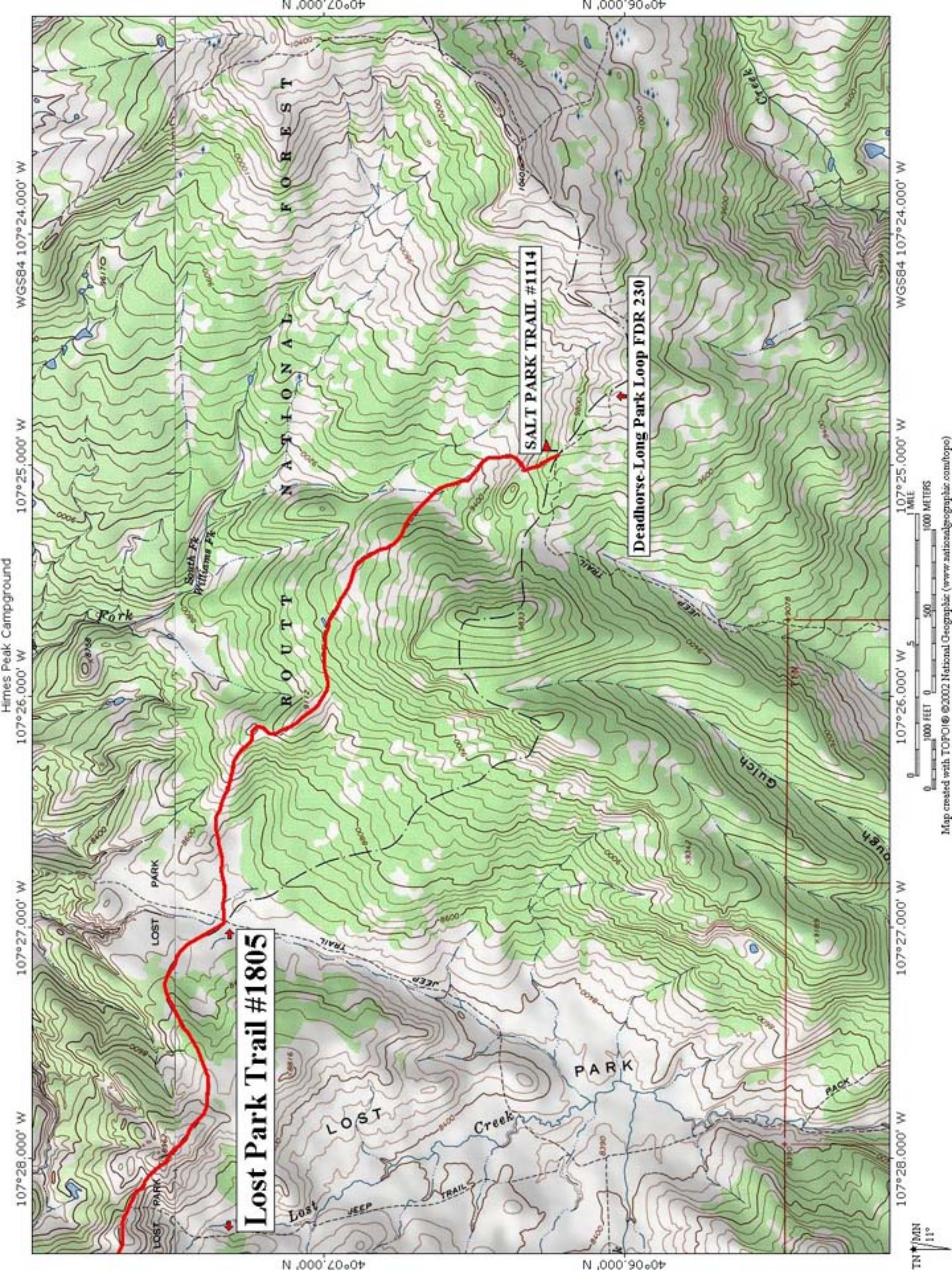
Lost Park Trail #1800

WHITE RIVER NATIONAL FOREST

107°31.000' W 107°30.000' W 107°29.000' W WGS84 107°28.000' W

0 5 1 MILE
0 1000 FEET 0 500 1000 METERS

Map created with TOPO!® ©2002 National Geographic (www.nationalgeographic.com/topo)



Lost Park Trail #1805

SALT PARK TRAIL #1114

Deadhorse-Long Park Loop FDR 230

107°28.000' W 107°27.000' W 107°26.000' W 107°25.000' W 107°24.000' W

107°28.000' W 107°27.000' W 107°26.000' W 107°25.000' W 107°24.000' W



Map created with TOPOC © 2002 National Geographic (www.nationalgeographic.com/topo)