

Blanco Ranger District
220 E Market Street
Meeker, CO 81641
(970) 878-4039 - Voice
(970) 878-5173 - Fax



United States Department of Agriculture



SNELL CREEK TRAIL # 1810

Difficulty: Moderate

Trail Use: Light

Length: 5.3 miles

Elevation: Starts at 8,342 feet and ends at 10,091 feet (highest point 10,091 feet)

Elevation Gain: +1,800 feet – 51 feet = +1,749 feet

Open To: HIKING, HORSEBACK RIDING (From 6/15—8/31 only, open to motorcycles)

Access:

- The Snell Creek Trail is located 39 miles east of Meeker.
- From Meeker, take State Highway 13 east for 1 mile.
- Where Highway 13 turns north, turn east on Rio Blanco County Road 8 for 38 miles.
- The Snell Creek Trailhead begins 1/4 mile above Snell Creek on CR 8 on the north side of the road.

Trail Highlights:

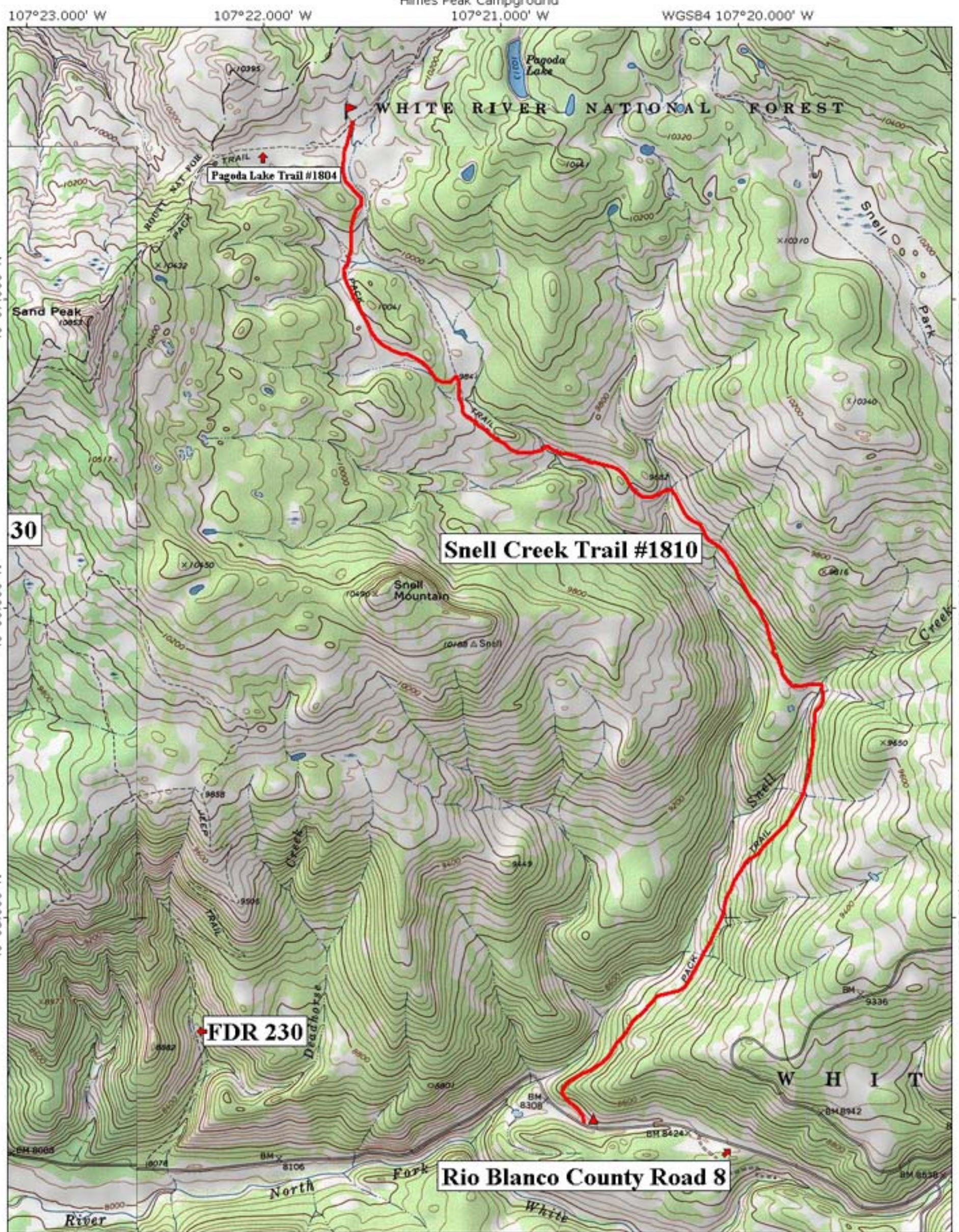
The Snell Creek Trail connects County Road 8 with the Pagoda Lake Trail 5.5 miles to the north. It follows Snell Creek through patches of lodgepole pine, spruce-fir, and aspen branching up the middle fork of Snell Creek through large open meadows. The trail crosses the creek several times so be prepared to wade through cold ankle deep water.

Important Information:

- **THIS TRAIL IS USED FOR MULTIPLE ACTIVITIES INCLUDING HIKING AND HORSEBACK RIDING. FROM 6/15—8/31, THE ROAD IS OPEN TO MOTORIZED VEHICLES WITH A 50" OR LESS WHEEL BASE. PLEASE RESPECT OTHER USERS.**
- **DOMESTIC CATTLE MAY BE GRAZING IN THE AREA.**

PACK IT IN - PACK IT OUT!! LEAVE NO TRACE!!

THIS MAP IS INTENDED FOR USE AS A GENERAL GUIDE ONLY, NOT FOR ACTUAL LAND NAVIGATION. THE WHITE RIVER NATIONAL FOREST STRONGLY SUGGESTS PURCHASING A TOPOGRAPHIC TRAIL MAP AND COMPASS PRIOR TO BEGINNING AN OFF-HIGHWAY VEHICLE TRIP.



107°23.000' W

107°22.000' W

107°21.000' W

WGS84 107°20.000' W

40°07.000' N

40°07.000' N

40°06.000' N

40°06.000' N

40°05.000' N

40°05.000' N

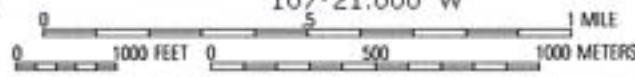
107°23.000' W

107°22.000' W

107°21.000' W

WGS84 107°20.000' W

TN
MN
11°



Map created with TOPO!® ©2002 National Geographic (www.nationalgeographic.com/topo)