

Blanco Ranger District  
220 E Market Street  
Meeker, CO 81641  
(970) 878-4039 - Voice  
(970) 878-5173 - Fax



United States Department of Agriculture



---

---

## **TRAPPERS LAKE TRAIL # 1816**

**Difficulty:** Moderate

**Trail Use:** Light

**Length:** 15 miles

**Elevation:** Starts at 9,946 feet and ends at 9,750 feet (highest point 11,288 feet)

**Elevation Gain:** + 2,065 feet – 2,261 feet = - 196 feet

**Open To:** HIKING, HORSEBACK RIDING

### **Access:**

- Access to Trappers Lake Trail is located 50 miles east of Meeker.
- From Meeker, take State Highway 13 east for 1 mile.
- Where Highway 13 turns north, turn east on Rio Blanco County Road 8 for 39 miles.
- Turn south on the Trappers Lake Road (FDR 205) for 10 miles to the Outlet Trailhead.
- Follow the Carhart Trail #1815 around the east side of Trappers Lake to the Trappers Lake Trail.

### **Trail Highlights:**

The Trappers Lake Trail provides access up Fraser Creek to the eastern part of the Flat Tops Wilderness. The trail follows Fraser Creek through an environment that changes from forest to riparian to alpine meadows. Four miles from the trailhead, the trail emerges onto the Flat Tops Plateau in an area bounding with many small potholes of water. The trail then heads south crossing the headwaters of the South Fork of the White River, and the west side of Shingle Peak for 6 miles to the popular camping area around Rim and Shepherd Lakes. The higher peaks on the Flat tops are distinguishable along this section of the trail. Looking down Sweetwater Creek, southwest of Rim Lake, you can see the Sawatch Range to the southeast. The remaining 5 miles of the trail from Sweetwater Creek to Indian Camp Pass alternate between aspen, alpine meadows and spruce fir forests.

### **Important Information:**

- **THIS TRAIL IS USED FOR MULTIPLE ACTIVITIES INCLUDING HIKING AND HORSEBACK RIDING. PLEASE RESPECT OTHER USERS.**
- **DOMESTIC CATTLE MAY BE GRAZING IN THE AREA.**

**PACK IT IN - PACK IT OUT!! LEAVE NO TRACE!!**

*THIS MAP IS INTENDED FOR USE AS A GENERAL GUIDE ONLY, NOT FOR ACTUAL LAND NAVIGATION. THE WHITE RIVER NATIONAL FOREST STRONGLY SUGGESTS PURCHASING A TOPOGRAPHIC TRAIL MAP AND COMPASS PRIOR TO BEGINNING AN OFF-HIGHWAY VEHICLE TRIP.*

107°15.000' W

Himes Peak Campground  
107°14.000' W

107°13.000' W

WGS84 107°12.000' W

**Trappers Lake Road FDR 205**

**Himes Peak Trail #1819**

**Trappers Lake Campgrounds**

**Stillwater Trail #1814**

**Carhart Trail #1815**

**Wall Lake Trail #1818**

**Oyster Lake Trail #1825**

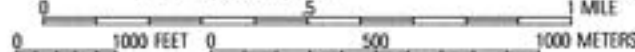


107°15.000' W

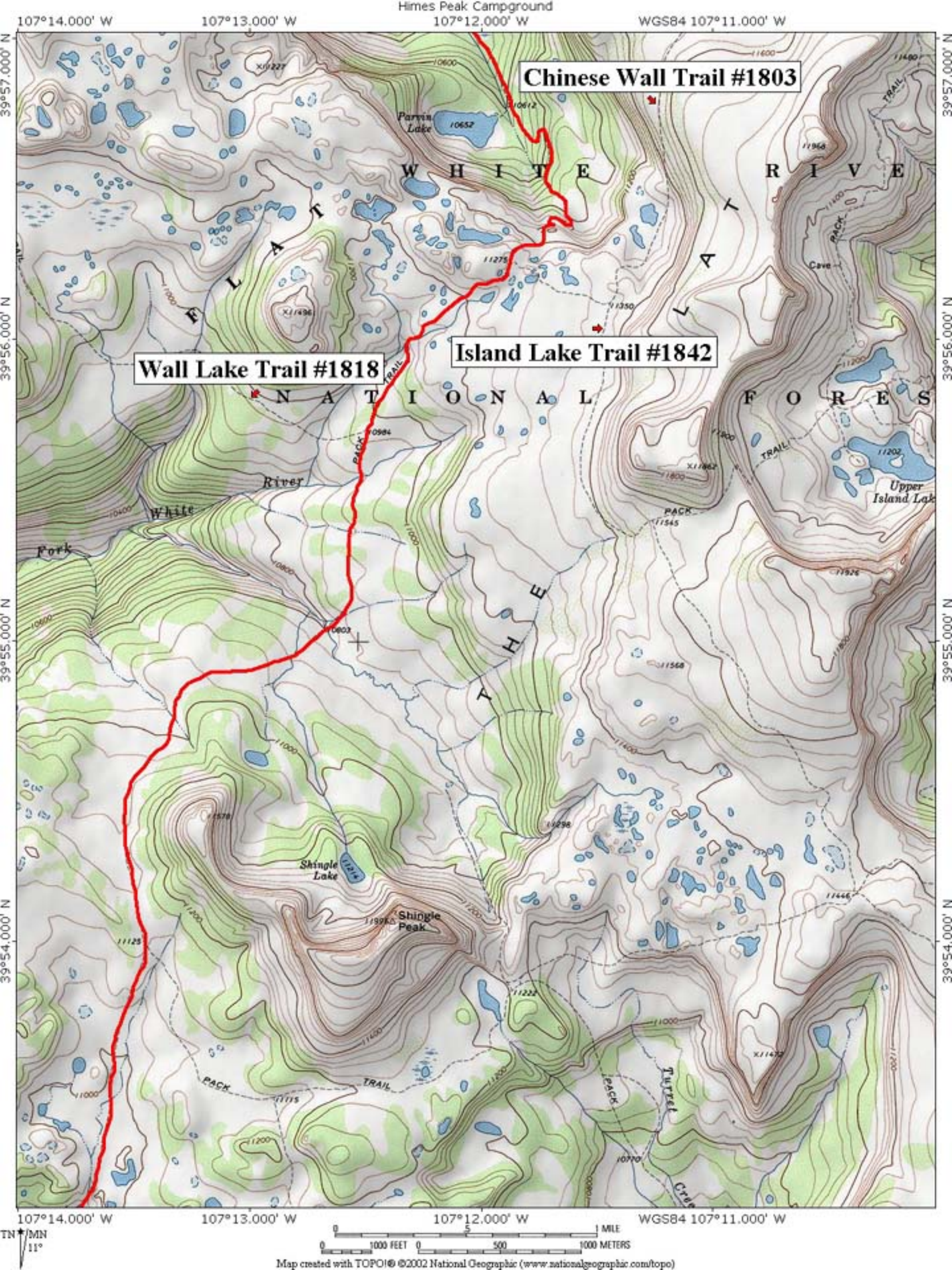
107°14.000' W

107°13.000' W

WGS84 107°12.000' W



Map created with TOPO!® ©2002 National Geographic (www.nationalgeographic.com/topo)

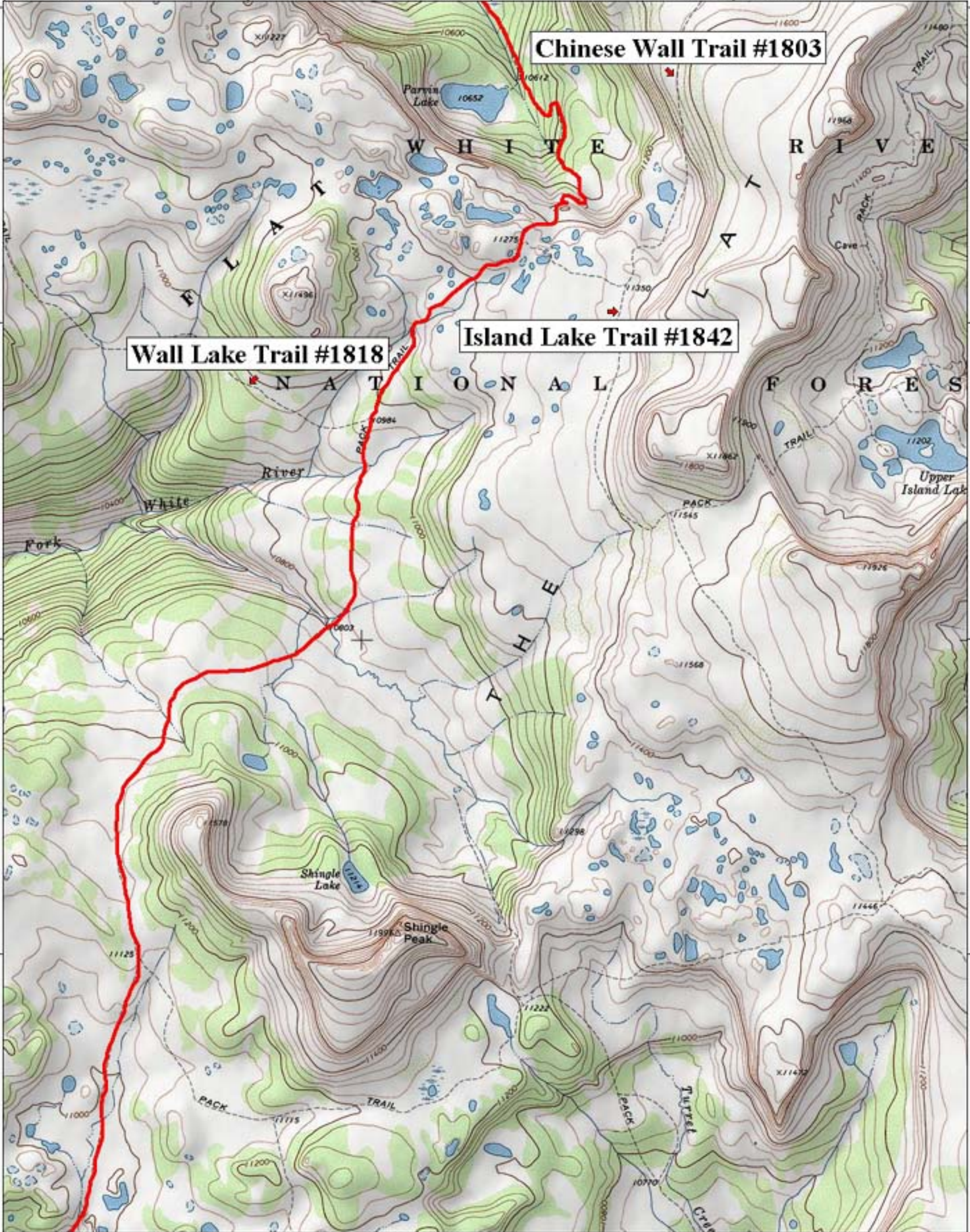


**Chinese Wall Trail #1803**

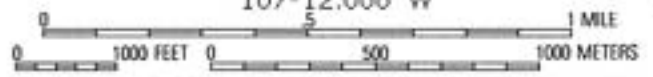
**Wall Lake Trail #1818**

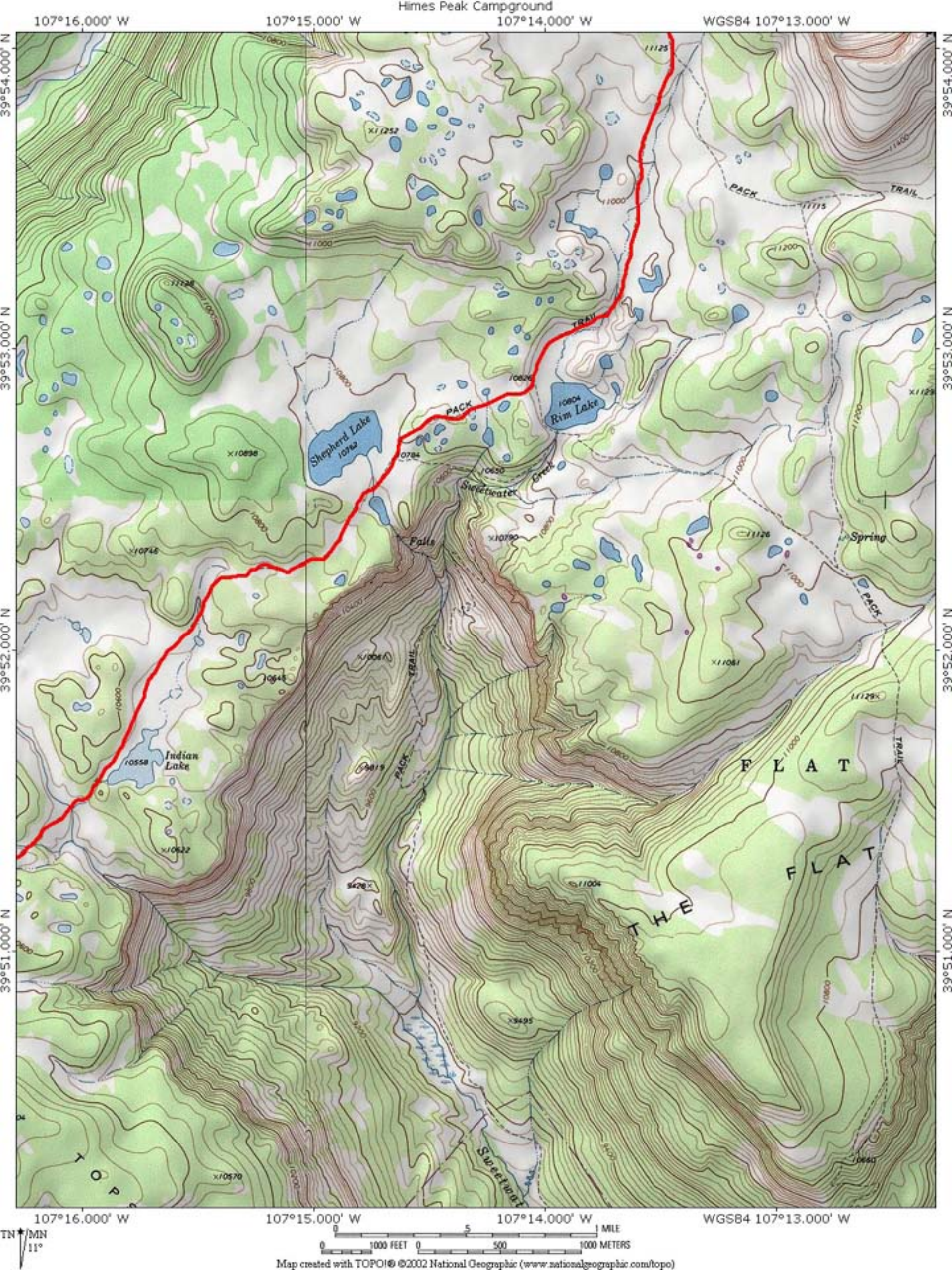
**Island Lake Trail #1842**

107°14.000' W      107°13.000' W      Himes Peak Campground      107°12.000' W      WGS84 107°11.000' W



107°14.000' W      107°13.000' W      107°12.000' W      WGS84 107°11.000' W





107°18.000' W

Himes Peak Campground  
107°17.000' W

107°16.000' W

WGS84 107°15.000' W

39°51.000' N

39°51.000' N

39°50.000' N

39°50.000' N

39°49.000' N

39°49.000' N

107°18.000' W

107°17.000' W

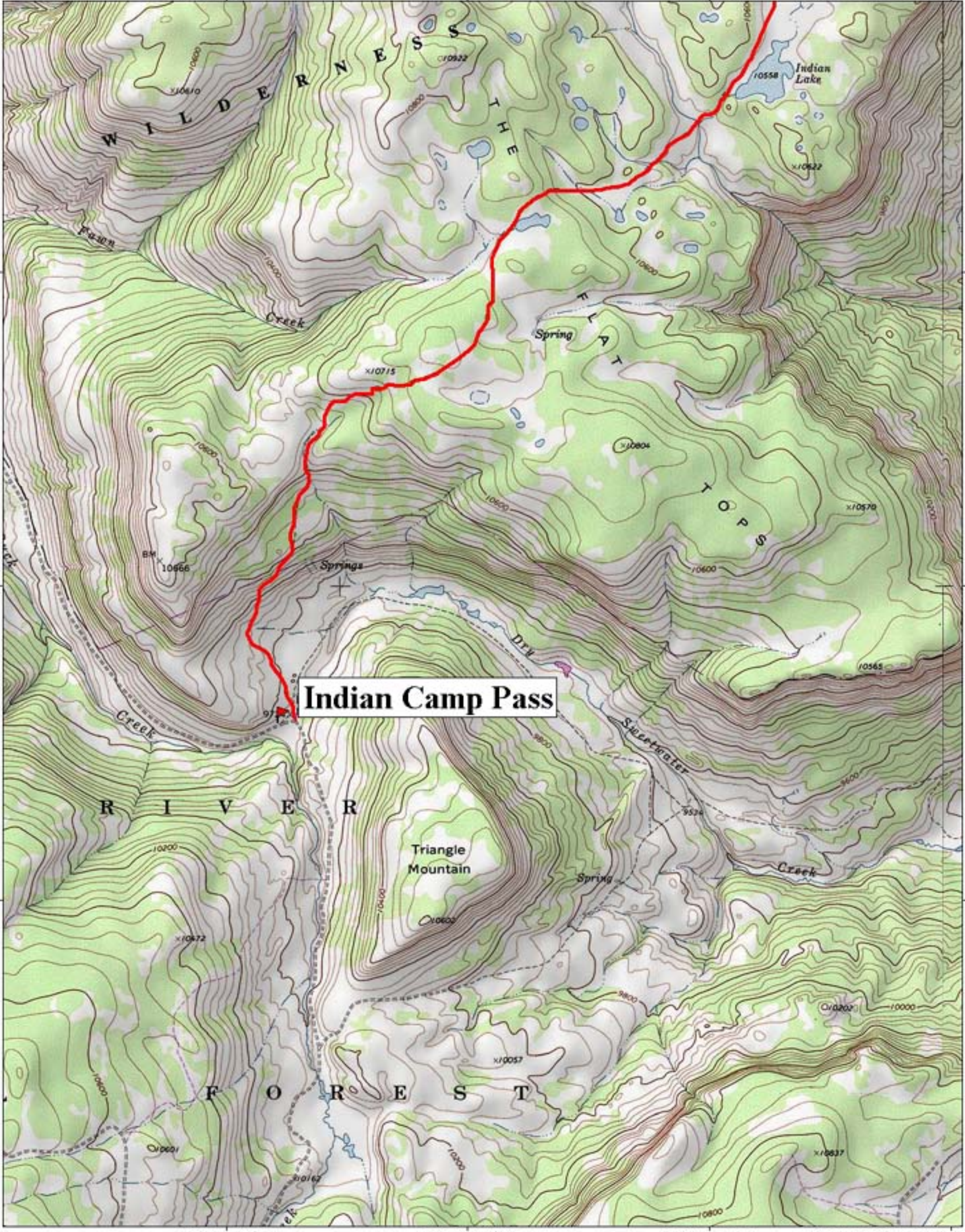
107°16.000' W

WGS84 107°15.000' W

TN  
MN  
11°



Map created with TOPO!® ©2002 National Geographic (www.nationalgeographic.com/topo)



**Indian Camp Pass**

Triangle Mountain

Indian Lake

WILDERNESS

THE

FAT

TOP

RIVER

FOREST

Creek

Creek

DRY

Sweetwater

Creek

Springs

Spring

Spring

BM 10666

10715

10604

10570

10565

10472

10603

10057

10637

10601

10162

10800

10600

10600

10600

10600

10600

10600

10600

10600

10600

10600

10600

10600

10600

10600

10600

10610

10622

10622

10632

10632

10632

10632

10632

10632

10632

10632

10632

10632

10632

10632

10632

10632

10632

10632

10632

10632

10632

10632

10632

10632

10632

10632

10632

10632

10632

10632

10632

10632

10632

10632

10632

10632

10632

10632

10632

10632

10632

10632

10632

10632

10632

10632

10632

10632

10632

10632

10632

10632

10632

10632

10632

10632

10632

10632

10632

10632

10632

10632

10632

10632

10632

10632

10632

10632

10632

10632

10632

10632

10632

10632

10632

10632

10632

10632

10632

10632

10632

10632

10632

10632

10632

10632