

Blanco Ranger District
220 E Market Street
Meeker, CO 81641
(970) 878-4039 - Voice
(970) 878-5173 - Fax



United States Department of Agriculture



WALL LAKE TRAIL # 1818

Difficulty: More Difficult

Trail Use: Heavy

Length: 7 miles

Elevation: Starts at 9,766 feet and ends at 10,977 feet (highest point 11,213 feet)

Elevation Gain: +1,721 feet – 510 feet = +1,211 feet

Open To: HIKING, HORSEBACK RIDING

Access:

- Access to Wall Lake Trail is located 50 miles east of Meeker.
- From Meeker, take State Highway 13 east for 1 mile.
- Where Highway 13 turns north, turn east on Rio Blanco County Road 8 for 39 miles.
- Turn south on the Trappers Lake Road (FDR 205) for 10 miles.
- Turn south after Trappers Lake Lodge and cross the bridge to the campgrounds. Continue through the campgrounds to the Wall Lake Trailhead.

Trail Highlights:

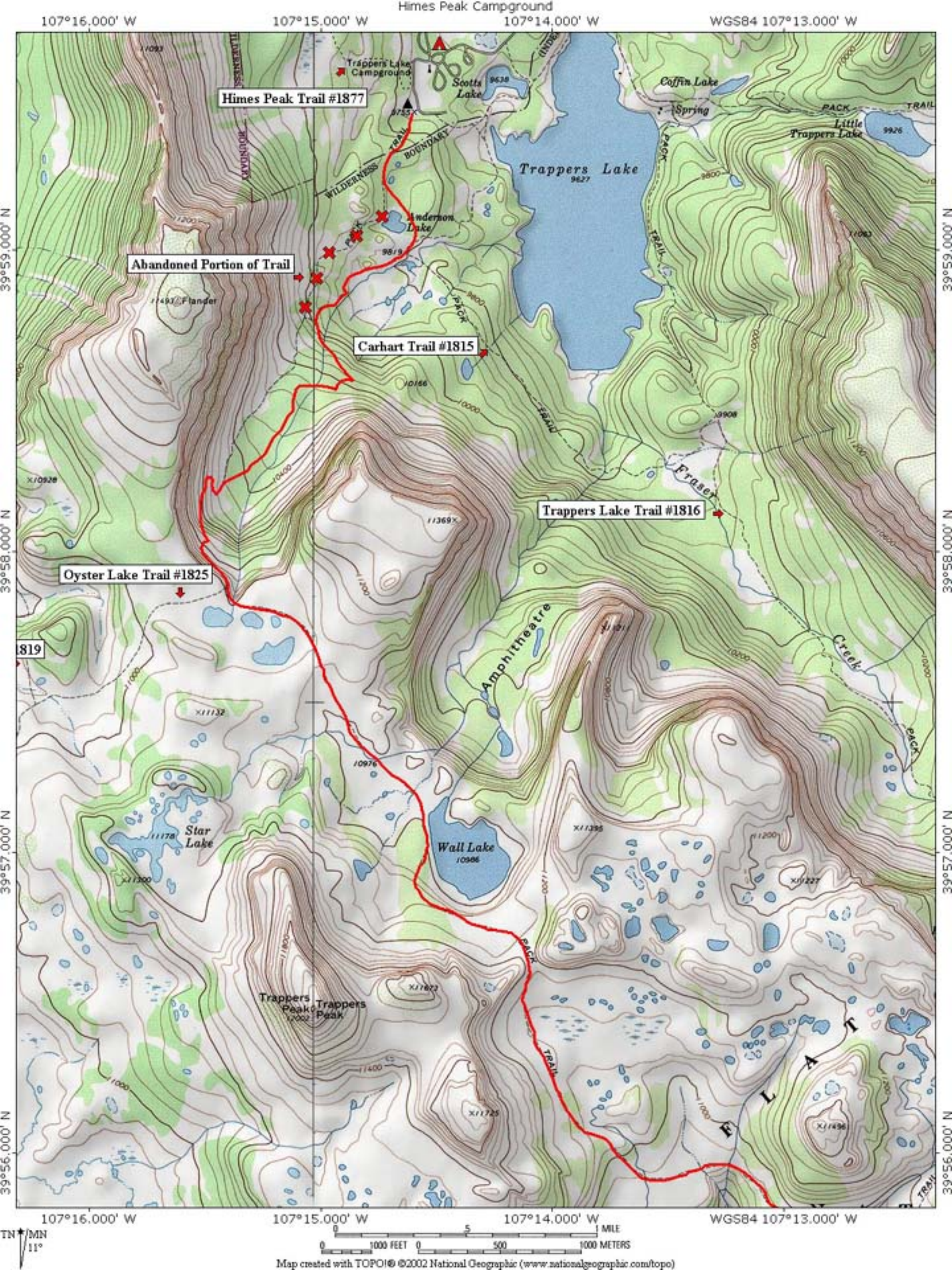
As you leave the parking lot you immediately enter burned stands of spruce and lodgepole pine, the result of the 2002 Big Fish Fire. The burned area continues for about 2 miles above Anderson Lake. This trail is one of the quickest but steepest routes up to the plateau. Once upon the plateau, the Oyster Lake Trail junction provides trail access to the west. Wall Lake, nestled below the 12,002 foot bulk of Trappers Peak, is still two miles distance across the rolling tundra. Upon reaching the lake the trail stays on the west side of the lake climbing the "wall" and crossing a saddle into the South Fork drainage. From the saddle and through the meadows below, Shingle Peak dominates the landscape to the south. The trail continues across the alpine tundra for 2 miles ending at the Trappers Lake Trail.

Important Information:

- **THIS TRAIL IS USED FOR MULTIPLE ACTIVITIES INCLUDING HIKING AND HORSEBACK RIDING. PLEASE RESPECT OTHER USERS.**
- **DOMESTIC CATTLE MAY BE GRAZING IN THE AREA.**

PACK IT IN - PACK IT OUT!! LEAVE NO TRACE!!

THIS MAP IS INTENDED FOR USE AS A GENERAL GUIDE ONLY, NOT FOR ACTUAL LAND NAVIGATION. THE WHITE RIVER NATIONAL FOREST STRONGLY SUGGESTS PURCHASING A TOPOGRAPHIC TRAIL MAP AND COMPASS PRIOR TO BEGINNING AN OFF-HIGHWAY VEHICLE TRIP.



107°14.00' W

Himes Peak Campground
107°13.00' W

107°12.00' W

WGS84 107°11.00' W

39°57.00' N

39°57.00' N

39°56.00' N

39°56.00' N

39°55.00' N

39°55.00' N

39°54.00' N

39°54.00' N

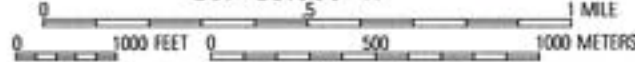
107°14.00' W

107°13.00' W

107°12.00' W

WGS84 107°11.00' W

TN
MN
11°



Map created with TOPO!® ©2002 National Geographic (www.nationalgeographic.com/topo)

