

Blanco Ranger District
220 E Market Street
Meeker, CO 81641
(970) 878-4039 - Voice
(970) 878-5173 - Fax



United States Department of Agriculture



WILSON MESA TRAIL # 1800

Difficulty: More Difficult

Trail Use: Low

Length: 6.82 miles

Elevation: Starts at 8,265 feet and ends at 9,979 feet (highest point 10,144 feet)

Elevation Gain: +3,107 feet – 1,393 feet = +1,714 feet

Open To: HIKING, HORSEBACK RIDING

Access:

- From Meeker, take State Highway 13 east and north for 34 miles.
- Turn southeast on Moffat County Road 41 (Morapos Creek Rd) for 12 miles to the Forest boundary.
- The Morapos Campground is 1/4 mile ahead and the Wilson Mesa Trailhead is 300 yards further at the end of the road. The trailhead is at the northwest corner of the parking lot.

Trail Highlights:

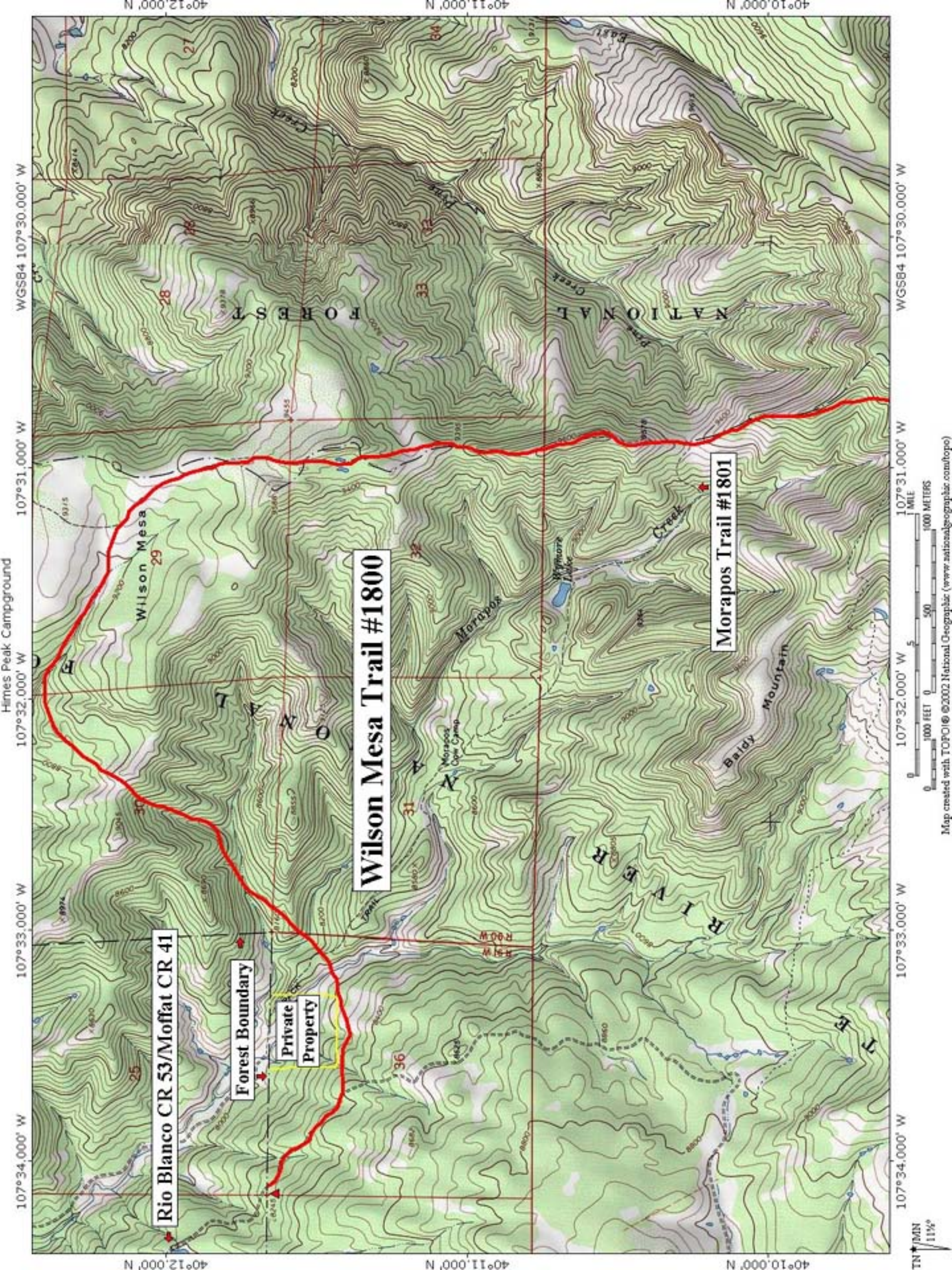
The trail heads in an easterly direction through open meadows and aspen. After 1/2 mile, it drops into a fork of Morapos Creek and climbs up a ridge top to the Wymore Lake Trail junction. The trail then drops into the main fork of Morapos Creek, crosses it, and again climbs a small ridge before dropping gradually into the east fork of Morapos Creek. After following this intermittent stream about 3/4 mile, the trail leaves the bottom and switchbacks up to a bald ridge, then through aspen stands to Wilson Mesa, approximately 3 1/2 miles from the origin. From Wilson Mesa, the Elk Head Mountains stand out to the north and Axial Basin to the west. The trail now turns south following the divide between Morapos Creek and Pine Creek for 3 miles emerging in the west end of Salt Park where it junctions with the Salt Park Trail # 1114.

Important Information:

- **THIS TRAIL BORDERS PRIVATE PROPERTY AFTER ABOUT THE FIRST 1/2 MILE FOR APPROXIMATELY ANOTHER 1/2 MILE. PLEASE RESPECT PRIVATE PROPERTY.**
- **THIS TRAIL IS USED FOR MULTIPLE ACTIVITIES INCLUDING HIKING AND HORSEBACK RIDING. PLEASE RESPECT OTHER USERS.**
- **DOMESTIC CATTLE MAY BE GRAZING IN THE AREA.**

PACK IT IN - PACK IT OUT!! LEAVE NO TRACE!!

THIS MAP IS INTENDED FOR USE AS A GENERAL GUIDE ONLY, NOT FOR ACTUAL LAND NAVIGATION. THE WHITE RIVER NATIONAL FOREST STRONGLY SUGGESTS PURCHASING A TOPOGRAPHIC TRAIL MAP AND COMPASS PRIOR TO BEGINNING AN OFF-HIGHWAY VEHICLE TRIP.



107°34.000' W 107°33.000' W 107°32.000' W 107°31.000' W 107°30.000' W

40°12.000' N 40°11.000' N 40°10.000' N

Rio Blanco CR 53/Moffat CR 41

Forest Boundary

Private Property

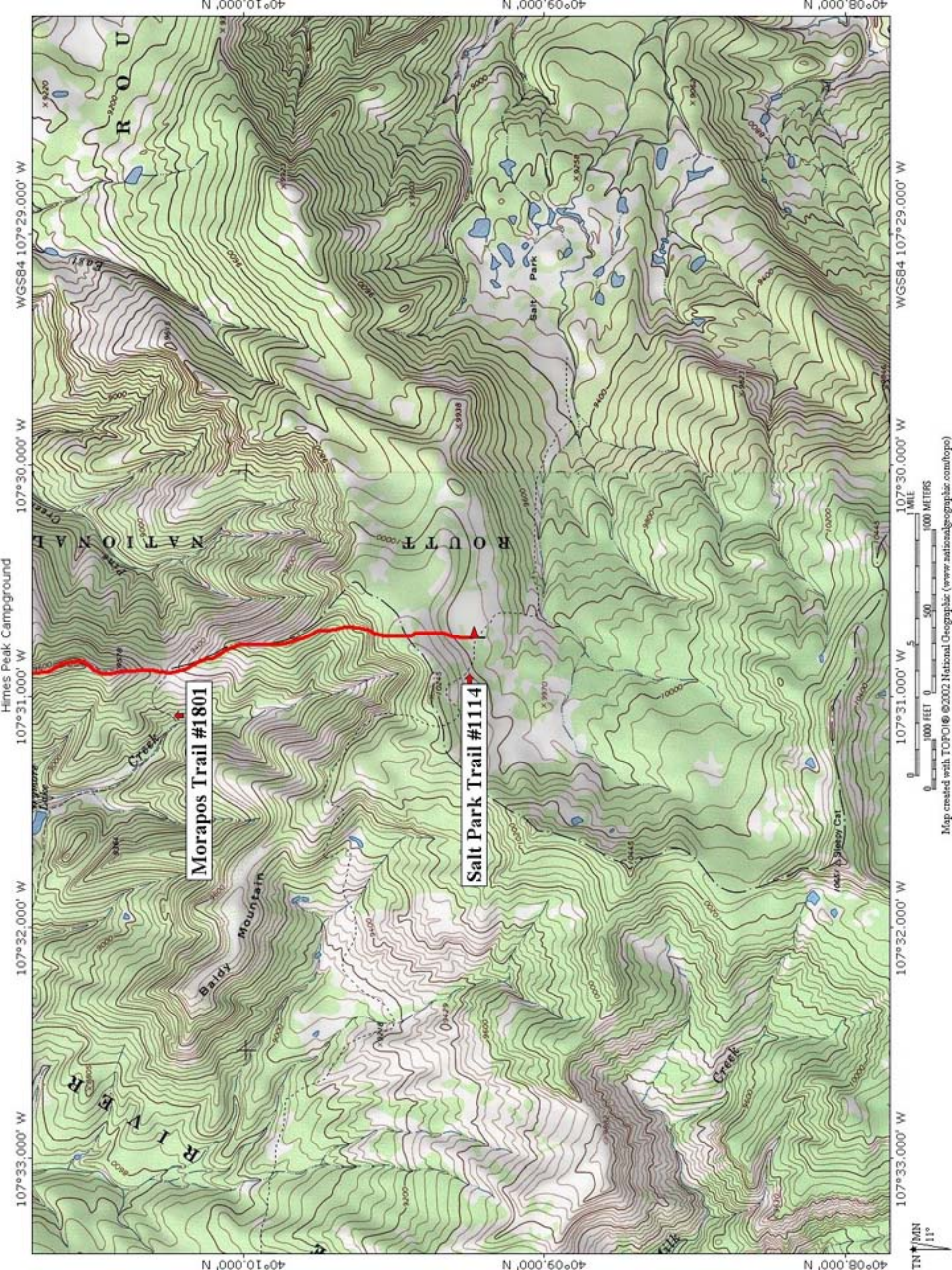
Wilson Mesa Trail #1800

Morapos Trail #1801

TN 11%

0 1000 FEET 0 500 1000 METERS
0 1 MILE

Map created with TOPO © 2002 National Geographic (www.nationalgeographic.com/topo)



107°33.000' W 107°32.000' W 107°31.000' W 107°30.000' W 107°29.000' W

107°33.000' W 107°32.000' W 107°31.000' W 107°30.000' W 107°29.000' W

TN 11°

0 1000 FEET 0 500 1000 METERS

Map created with TOPOC © 2002 National Geographic (www.nationalgeographic.com/topo)

Morapos Trail #1801

Salt Park Trail #1114