



U. S. Department of Agriculture

Dillon Ranger District  
680 Blue River Parkway  
Silverthorne, CO 80498  
(970) 468-5400



Boreas Pass Rd.  
Only

## BOREAS PASS ROAD - CR 10

**Difficulty:** EASY TO MODERATE

**Trail Use:** Heavy

**Length:** 6.6 miles (one-way)

**Elevation:** Starts at 10,346 feet and ends at 11,488 feet (highest point 11,499 feet)

**Elevation Gain:** +1,153 feet - 11 feet = +1,142 feet

**Open In Summer To:** HIKING, HORSE, MTN BIKING, 4X4, ATV, MOTORCYCLE

**Open In Winter To:** X-C SKIING, SNOWSHOEING, SNOWMOBILING (only allowed on Boreas Pass Rd)

### Access:

- From I-70 take Exit 203, Frisco / Breckenridge, and travel south on HWY 9 through Frisco toward Breckenridge.
- At the southern town limits of Breckenridge turn left on Boreas Pass Road (County Road 10). Follow Boreas Pass Road approximately 3.5 miles to the Bakers Tank trailhead and parking lot on your left.
- The Bakers Tank Trailhead is the parking area for non-motorized road users.

### Trail Highlights:

- At the start of the tour you immediately have spectacular views of the Blue River Valley and the majestic Tenmile Range.
- The road follows the old South Park and Pacific Railroad bed, climbing on a gradual 3% grade.
- The road continues past Bakers Tank to the summit of Boreas Pass, the Continental Divide, at an elevation of 11,499 feet.
- The road then continues southeast for another 10.4 miles to the town of Como in Park County
- A large portion of this road passes above timberline. Be sure to check the weather forecast.
- During the winter, the wind has a tendency to cause big snow drifts on the road, especially at the summit.
- From 1872 to 1938 the road was used as a narrow-gauge railroad and gained fame as the nation's highest narrow-gauge railroad, running from Como to Breckenridge.
- Horses are not recommended on this road due to high motorized traffic.

### Important Information:

- **Snowmobiling is only allowed on the Boreas Pass Road corridor. The National Forest surrounding this road corridor is closed to snowmobiling.**

THE INFORMATION CONTAINED HEREIN IS INTENDED TO BE A GENERAL GUIDE ONLY, NOT FOR NAVIGATIONAL PURPOSES..

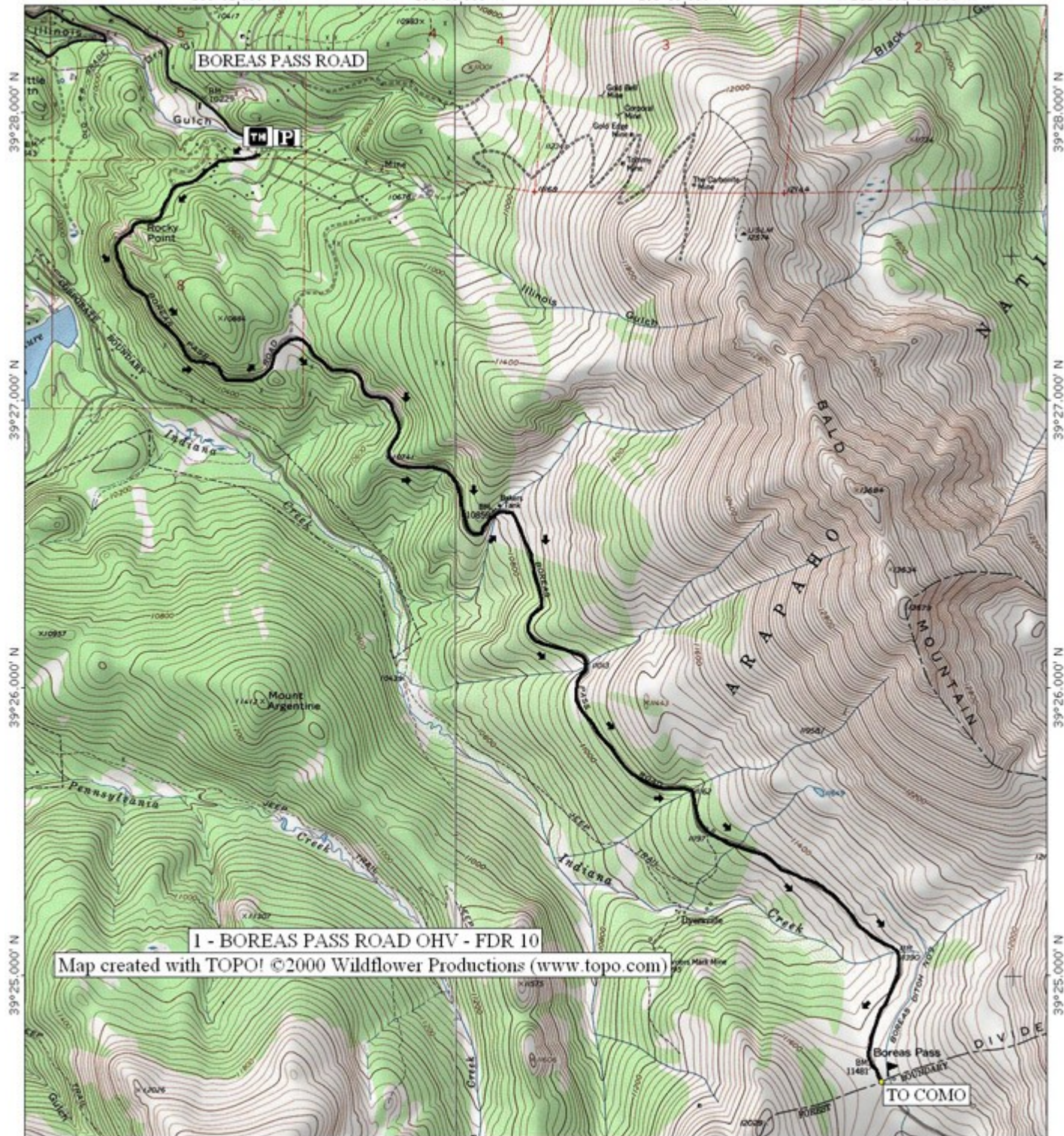
DILLON RANGER DISTRICT WHITE RIVER NATIONAL FOREST

106°01.000' W

106°00.000' W

105°59.000' W

WGS84 105°58.000' W



1 - BOREAS PASS ROAD OHV - FDR 10

Map created with TOPO! ©2000 Wildflower Productions (www.topo.com)

106°01.000' W

106°00.000' W

105°59.000' W

WGS84 105°58.000' W

TN  
MN  
10 1/2°

Map created with TOPO! ©2003 National Geographic (www.nationalgeographic.com/topo)

