



U. S. Department of Agriculture
 Dillon Ranger District
 680 Blue River Parkway
 Silverthorne, CO 80498
 (970) 468-5400



SPRING CREEK RECREATION AREA

Difficulty: MODERATE TO MORE DIFFICULT

Trail Use: Moderate

Length: Varies depending on trail

Elevation: Varies depending on trail

Elevation Gain: Varies depending on trail

Open In Summer To: HIKING, MTN. BIKING, 4X4, ATV, MOTORCYCLE

Open In Winter To: X-C SKIING, SNOWSHOEING, SNOWMOBILING

Access:

- From I-70 take Exit 205, Silverthorne / Dillon, and travel north on HWY 9 for 27 miles into Grand County.
- Turn left onto Spring Creek Road (Grand County Road 10).
- Follow Spring Creek Road for 6.8 miles.
- At the Dice Hill junction and BLM boundary there is a winter parking area. Parking is limited, please allow room for other vehicles. In winter Grand County Road and Bridge Maintenance have agreed to plow out a parking area for several motor vehicles and trailers.
- During the summer you can continue straight at this junction and into the National Forest.
- **Seasonal Closure:** The roads in this area are closed to wheeled motor vehicles (except snowmobiles) from Nov. 23 thru May 20 or until road is dry.

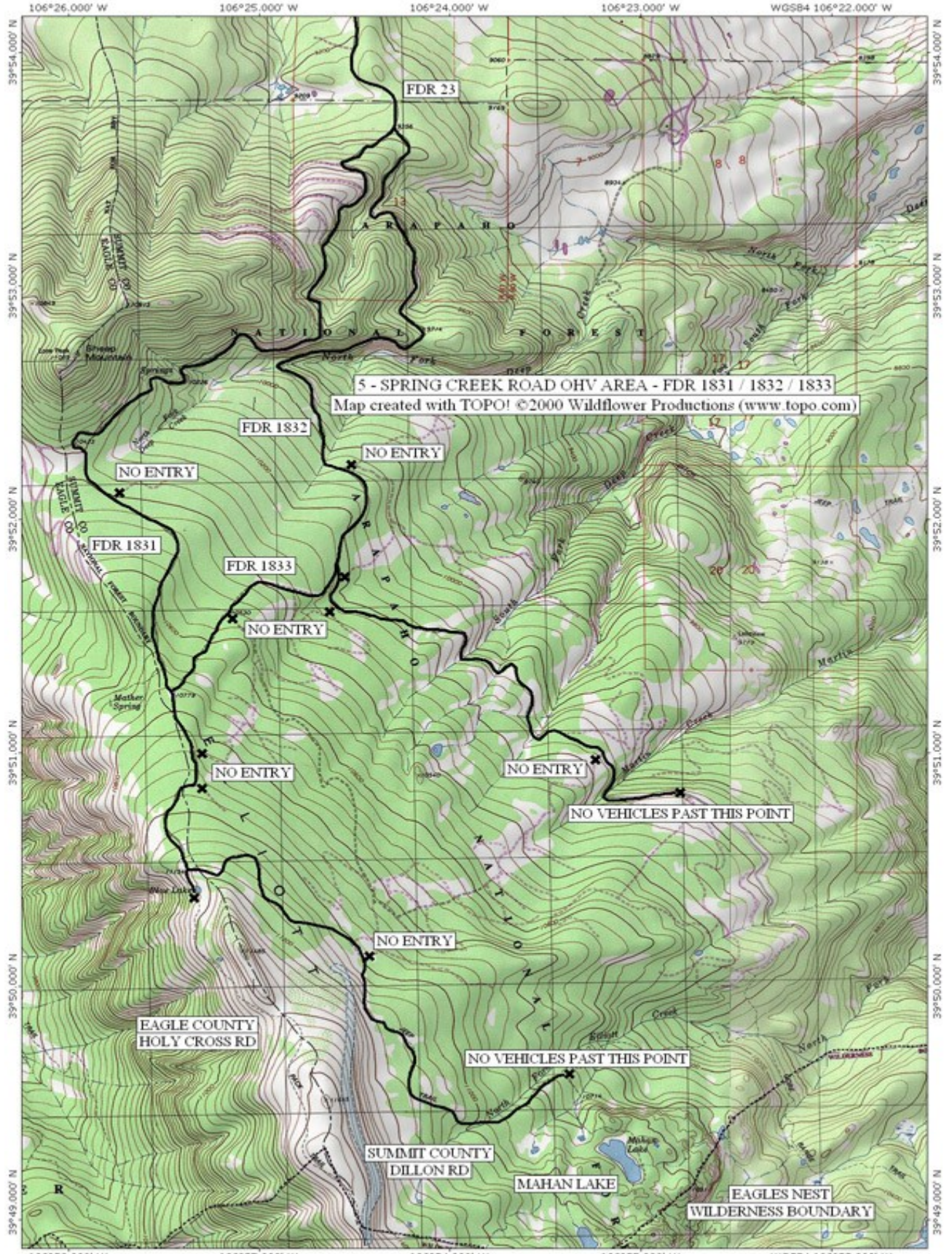
Trail Highlights:

- FDR 1831 travels past Sheep Mountain, along Elliot Ridge, to the Elliot Ridge Trailhead and ends at the trailhead parking area for non-motorized access to Mahan Lake.
- FDR 1832 travels through the South Fork Deep Creek and Martin Creek drainages and dead ends at the Gore Range Trailhead.
- FDR 1833 is a road that joins FDR 1831 and FDR 1832.
- During the winter, the Spring Creek area offers miles of snow covered roads through beautiful spruce and fir forests. The road system is groomed by High Country Snowmobile Club.

Important Information:

- Off-highway vehicles must be registered with Colorado State Parks. Out-of-state residents who bring OHVs into Colorado must purchase a Colorado Non-Resident OHV permit.
- **ALL OF THESE ROADS BORDER THE EAGLES NEST WILDERNESS AREA. NO MOTORIZED VEHICLES ARE ALLOWED WITHIN THE WILDERNESS AREA!!**

THE INFORMATION CONTAINED HEREIN IS INTENDED TO BE A GENERAL GUIDE ONLY, NOT FOR NAVIGATIONAL PURPOSES..



5 - SPRING CREEK ROAD OHV AREA - FDR 1831 / 1832 / 1833
Map created with TOPO! ©2000 Wildflower Productions (www.topo.com)

EAGLE COUNTY
HOLY CROSS RD

SUMMIT COUNTY
DILLON RD

MAHAN LAKE

EAGLES NEST
WILDERNESS BOUNDARY

