

# NEUSIOK TRAIL

---

---

**T**he Neusiok Trail winds more than 20 miles from a sandy beach on the Neuse River to a salt marsh on the Newport River.

In between, the trail crosses cypress swamps, hardwood ridges, longleaf-pine savannah and pocosin—shrubby bogs common to the Carolina coast. Look for signs of those who walked this way before—from native Indians to early settlers, woodsmen and moonshiners.



Along the Neusiok Trail are forests of longleaf pine.

**Length & Difficulty:** 20.4 miles, easy

**U.S.G.S. quad maps:** Cherry Point, Core Creek, Newport

**Trailheads:** • **North terminus**—Pine Cliff. Beside NC 306, about two miles from NC 101 on the right.  
• **South terminus**—Oyster Point.

## Enjoy the Neusiok

Hiking is best from October through May when the brush is thinnest and insects are sparse. The trail crosses several roads, so the trail can be shortened to suit you.

Parking is available at the trailheads. The trail is marked by rectangular aluminum tags that are undamaged by regular prescribed burning.

The trail crosses many wet areas, so you may get your feet wet despite a number of bridges and

boardwalks. Hikers may camp anywhere along the trail; however, three trail shelters offer a dry refuge for both your feet and head:

- **Copperhead Landing** is about halfway between Pine Cliff and NC 306;
- **Dogwood Camp** is less than a mile south of NC 101; and
- **Blackjack Lodge** is about one mile north of Mill Creek Road.

Each of the three-sided shelters has a fire grill and accommodates about five people. No drinking water is available along the trail.

Hunters sometimes walk the Neusiok, so during hunting season—October through December—it's a good idea to wear a bright orange hat or vest.

---

---



Wet places along the Neusiok Trail are home to pitcher plants (above) and bald cypress trees (left).





Bears are common, but you probably won't see one along the trail.

## Watch the Wildlife

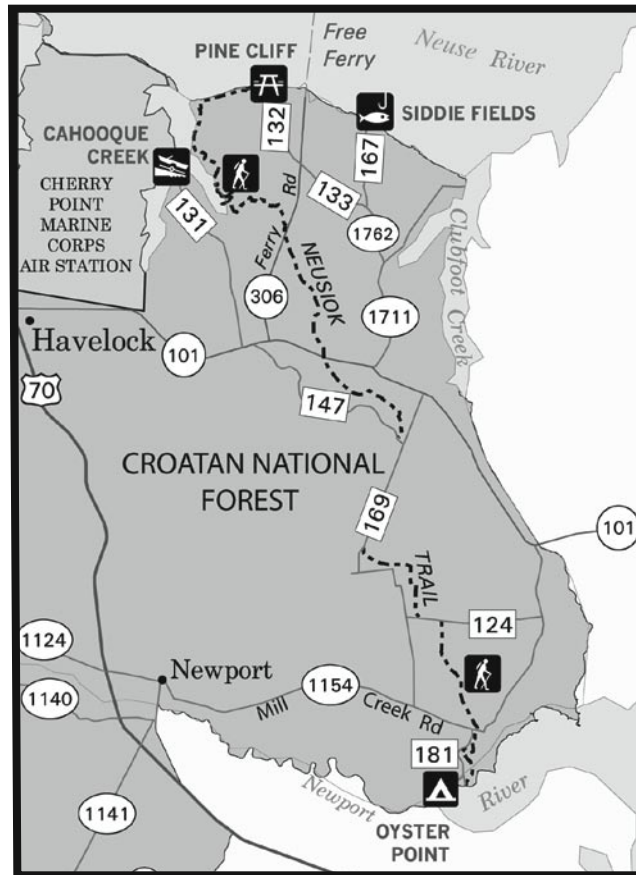
Walk quietly and you might be lucky enough to spot white-tailed deer, wild turkeys, black bear, otters, gray squirrels or even an alligator. Bird life abounds including ospreys, bald eagles and red-cockaded woodpeckers. While it's unlikely to see snakes, black racers sometimes cross your path. Poisonous snakes—copperheads, cottonmouths, timber (canebrake) and pygmy rattlesnakes—live in Croatan National Forest, so it's wise to look before placing your hands or feet in thick brush.

## Part of 900-mile trail

The Neusiok Trail is part of the 900-mile Mountains-to-Sea Trail that begins in Great Smoky Mountains National Park and ends in Jockey Ridge State Park at the ocean. The Mountains-to-Sea Trail is blazed with white circles.

## Thanks Wildlife Club

The Carteret County Wildlife Club battled briars, mud and mosquitoes for about five years to build the Neusiok Trail in cooperation with the U.S. Forest Service. The club continues to help with trail improvements.



### Directions to Neusiok Trailhead:

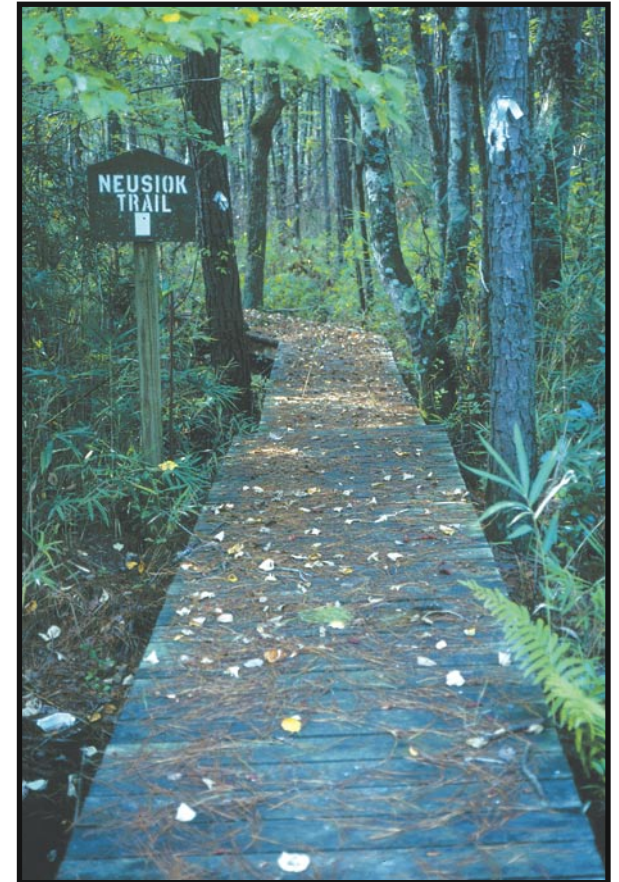
**To south terminus, Oyster Point:** In Newport, follow Chatham St. for 2.8 miles to Market St. and turn left. Follow Market St. to Mill Creek Rd. (SR 1154). Go 7.1 miles to Oyster Point Rd. (FR 181). Turn right for one mile.

**To north terminus:** From Havelock, turn onto NC 101 and go 5.3 miles to Ferry Rd. (NC 306). Turn left on NC 306 and go 3.3 miles to Forest Road 132. Turn left on unpaved road. Go 1.7 miles to Pine Cliff Picnic Area at road's end.

**For more information contact:** Croatan National Forest, 141 E. Fisher Avenue New Bern, NC 28560, 252-638-5628.

The U.S. Department of Agriculture in an equal opportunity provider and employer. (August 2005)

# Neusiok Trail: —20-mile walk— of adventure



**T**he Neusiok Trail travels 20 miles through a variety of landscapes: sandy beaches, cypress swamps, hardwood forest, longleaf pine savannahs, and shrubby bogs.

**NORTH CAROLINA  
USDA Forest Service  
Croatan National Forest**

