

## Frequently Asked Questions:

**Q:** Where can I ride my ATV?

**A:** Riding ATV's is permitted only on designated routes shown on the MVUM map.

**Q:** What does a MVUM map show me?

**A:** The map displays all national Forest System roads, trail and areas designated for public motorized vehicle use. It also states that driving anywhere other than on those roads, trails and areas designated on the MVUM is prohibited.

**Q:** Where can I get an MVUM map?

**A:** Maps will be posted on our website and paper copies will be available at each Umatilla National Forest Office.

**Q:** How much do the MVUM maps cost?

**A:** The MVUM maps are FREE.

**Q:** How many MVUM maps are there for the Umatilla National Forest?

**A:** Twenty-one maps, printed front and back on a total of 11 sheets. Please refer to the index located on each map to ensure you have the right map for the right area.

**Q:** Will I be able to retrieve game using my ATV this hunting season?

**A:** Traveling cross-country to retrieve game is not allowed.

**Q:** Can I travel off an open road to my campsite?

**A:** Yes, you can travel up to 300 feet from an open road to access your dispersed campsite. Also, fire wood permit holders may travel this same distance to cut and gather firewood.

Motor Vehicle Use Map's (MVUM) for the Umatilla National Forest are available at the offices listed below and online at: [www.fs.fed.us/r6/uma](http://www.fs.fed.us/r6/uma).

Supervisor's Office  
2517 SW Hailey Ave.  
Pendleton, OR 97801

Pomeroy  
Ranger District  
71 West Main St.  
Pomeroy, WA 99347  
(509) 843-1891

Heppner  
Ranger District  
P.O. Box 7  
Heppner, OR 97836  
(541) 676-9187

Walla Walla  
Ranger District  
1415 West Rose St.  
Walla Walla, WA 99362  
(509) 522-6290

North Fork John Day  
Ranger District  
P.O. Box 158  
Ukiah, OR 97880  
(541) 427-3231



**1 Keep It Safe**  
**2 Keep It Legal**  
**3 Keep On Trails**  
**4 Keep the Privilege**

 **US Forest Service**  
[www.fs.fed.us/r6/uma](http://www.fs.fed.us/r6/uma)

USDA is an equal opportunity provider and employer. F14-SO-07-10



United States Department of Agriculture  
Forest Service

## Travel Management Umatilla National Forest

### A Guide to Using Your New

# MOTOR VEHICLE USE MAP



## What is a Motor Vehicle Use Map?

The Umatilla National Forest Motor Vehicle Use Map (MVUM) is a single purpose map developed to display National Forest System routes (roads, trails and areas) designated for motorized travel. These maps display designations by vehicle class, seasons of use, as well as general travel rules and regulations.

National Forest System routes not shown on the MVUM are not designated for motorized vehicle travel. Routes



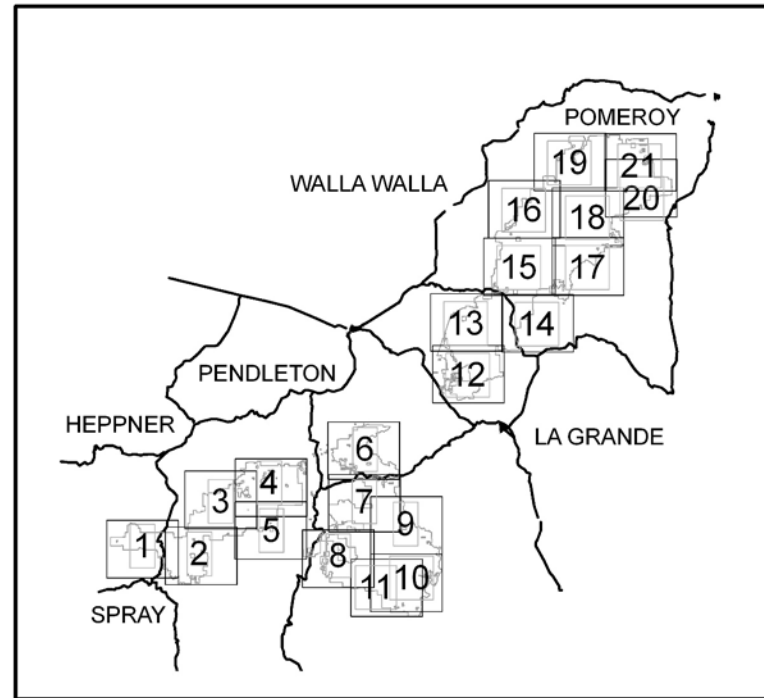
designated for motorized use may not always be clearly identified on the ground with a route number, but will be identified on the MVUM. It is your responsibility to refer to the MVUM to determine designated routes for motor vehicle use.

The MVUM is a black and white map with no topographical features. It is best used in conjunction with a Forest Visitor Map or other topographical map. The MVUM is posted on our website ([www.fs.fed.us/r6/uma](http://www.fs.fed.us/r6/uma)) and paper copies are available free of charge at each of the Umatilla National Forest offices.

The MVUM replaces Forest Access and Travel Management (ATM) maps. Motorized travel opportunities are basically the same, on the ground, as they have been since the early 1990's.

**Motor Vehicle Use Maps are the official enforcement map for designating all roads, trails and areas available for public motorized travel on the Umatilla National Forest. Visitors should not rely on any other maps for making decisions about motorized travel.**

## MVUM index Map



### Your Responsibilities

- Read, understand and comply with the MVUM in its entirety. For easy reference, carry the MVUM with you while traveling on Forest Service Roads.
- Know and adhere to all other applicable Federal, State, and local laws and regulations.
- Stay informed of route, area, seasonal and temporary closures.
- If you have questions please contact the Umatilla National Forest for clarification.

## Background on Travel Management Rule

The U. S. Forest Service released a Travel Management Rule in November 2005 for managing recreational Off Highway Vehicle (OHV) use on Forest Service lands. This rule provided a framework for each National Forest to identify and designate roads, trails, and areas suitable for motorized use.

The outcome of this planning effort was to publish a Motor Vehicle Use Map (MVUM) for each Forest nationwide. The goal of the travel management process is to create and maintain a safe and sustainable road and trail system that provides recreational opportunities and appropriate access while protecting forest resources.

### Implementation - Business As Usual

Access and travel management policies, prohibiting cross-country travel and restricting motorized travel to designated roads, trails and areas, have been in effect on the Umatilla National Forest since the early 1990's. Because these existing policies were in line with the 2005 Travel Management Rule, it was business as usual for the Umatilla, with a couple of exceptions.

One exception is the West-End OHV area located on the Heppner Ranger District which allowed cross-country travel on 91,000 acres. To meet the new regulations, the Forest completed an Environmental Assessment in 2009, evaluating the necessary changes to the motorized routes and areas within the West-End OHV area. The decision to prohibit cross-country travel and designate routes for motorized vehicle use brings the West-End area in compliance with the 2005 Travel Management Rule and creates consistency across the forest and with adjacent public lands.

Other changes have been made, over time, to the 1990's Access and Travel Management Plan to address safety issues on mixed-use routes.