

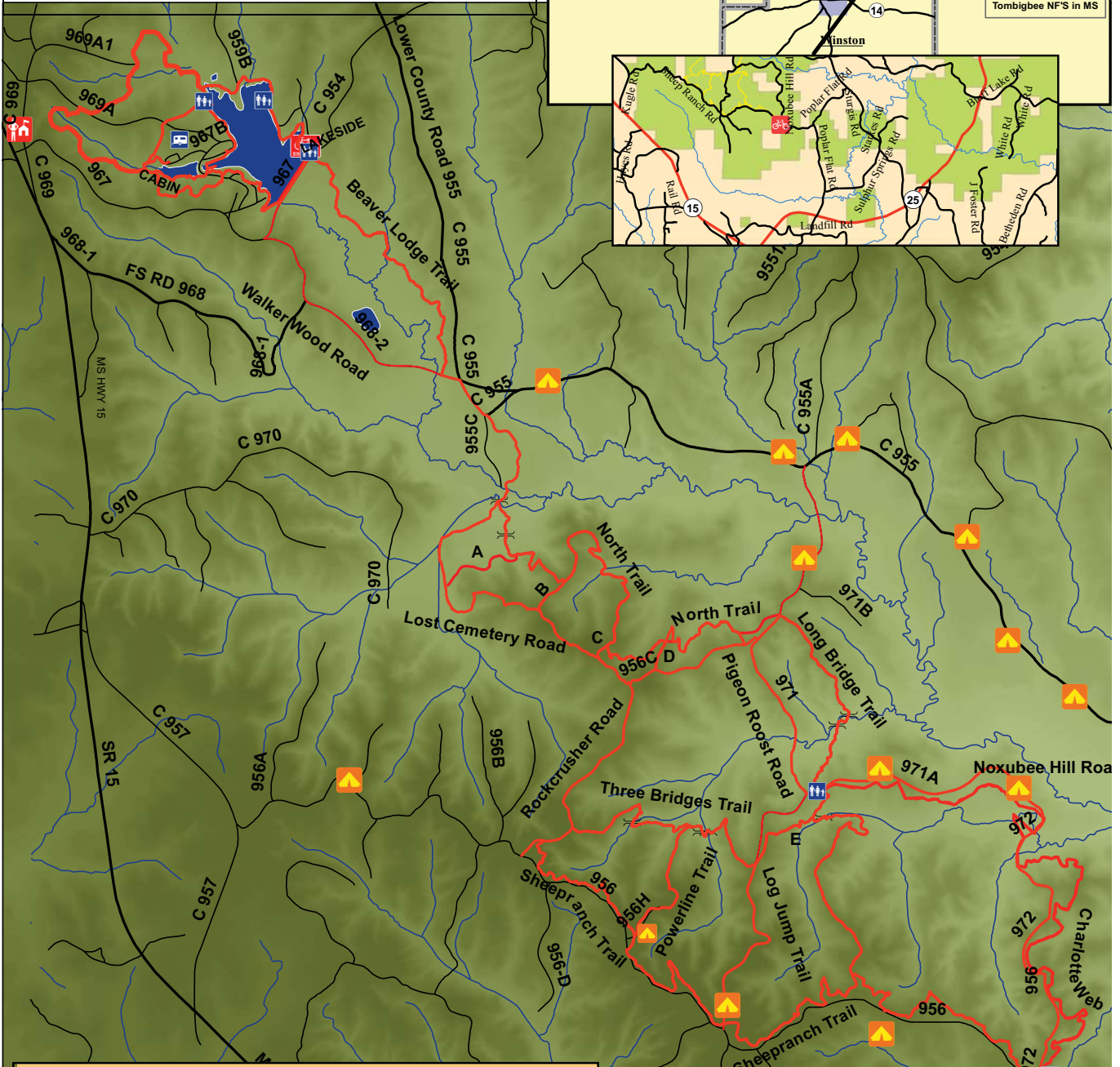
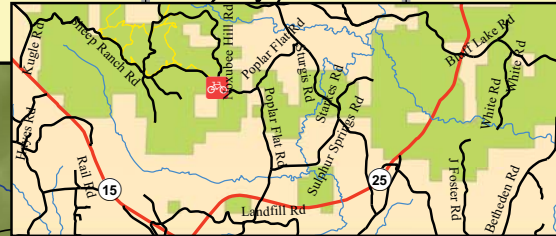
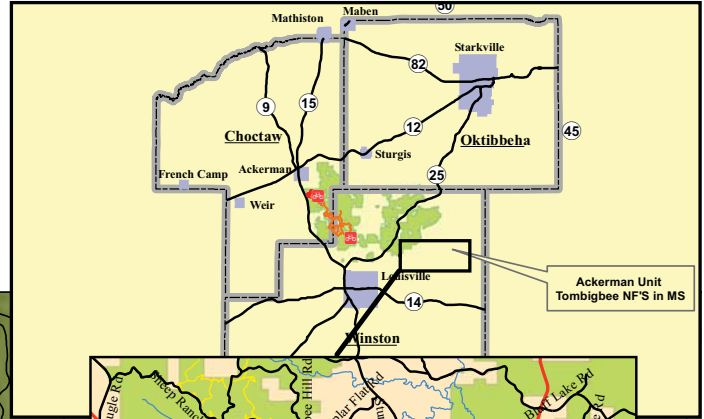


Noxubee Hills Bike Trail National Forests in Mississippi - Tombigbee Ranger District

NOXUBEE HILLS TRAIL SYSTEM

Distance in miles

- | | |
|---------------------------|-----------------------------|
| 1. BEAVER LODGE TRAIL:1.6 | 12. NOXUBEE HILL RD:3.0 |
| 2. WALKER WOOD RD:1.8 | 13. THREE BRIDGES TRAIL:1.4 |
| 3. LOST CEMETERY RD:2.7 | 14. LOG JUMP TRAIL:1.6 |
| 4. NORTH TRAIL:3.4 | 15. ROCK CRUSHER RD:1.9 |
| 5. BLUE-A TRAIL:0.5 | 16. POWERLINE TRAIL:0.7 |
| 6. BLUE-B TRAIL:0.3 | 17. SHEEP RANCH TRAIL:4.9 |
| 7. BLUE-C TRAIL:0.1 | 18. CHARLOTTE'S WEB:4.3 |
| 8. BLUE-D TRAIL:0.2 | 19. CHATTA TRAIL:1.12 |
| 9. BLUE-E TRAIL:0.3 | 20. CABIN LAKE TRAIL:0.47 |
| 10. PIGEON ROOST RD:3.4 | 21. HEADWATERS TRAIL:2.05 |
| 11. LONG BRIDGE TRAIL:1.6 | 22. LAKESIDE TRAIL:1.6 |



Legend

	Primitive Campsite		Trail Bridges
	Choctaw Lake Campground		SSTs
	County / Forest Service RD		Choctaw Lake
	Ranger Station		Stream
	Noxubee Hill Bike Trail		TrailHeads / Restrooms