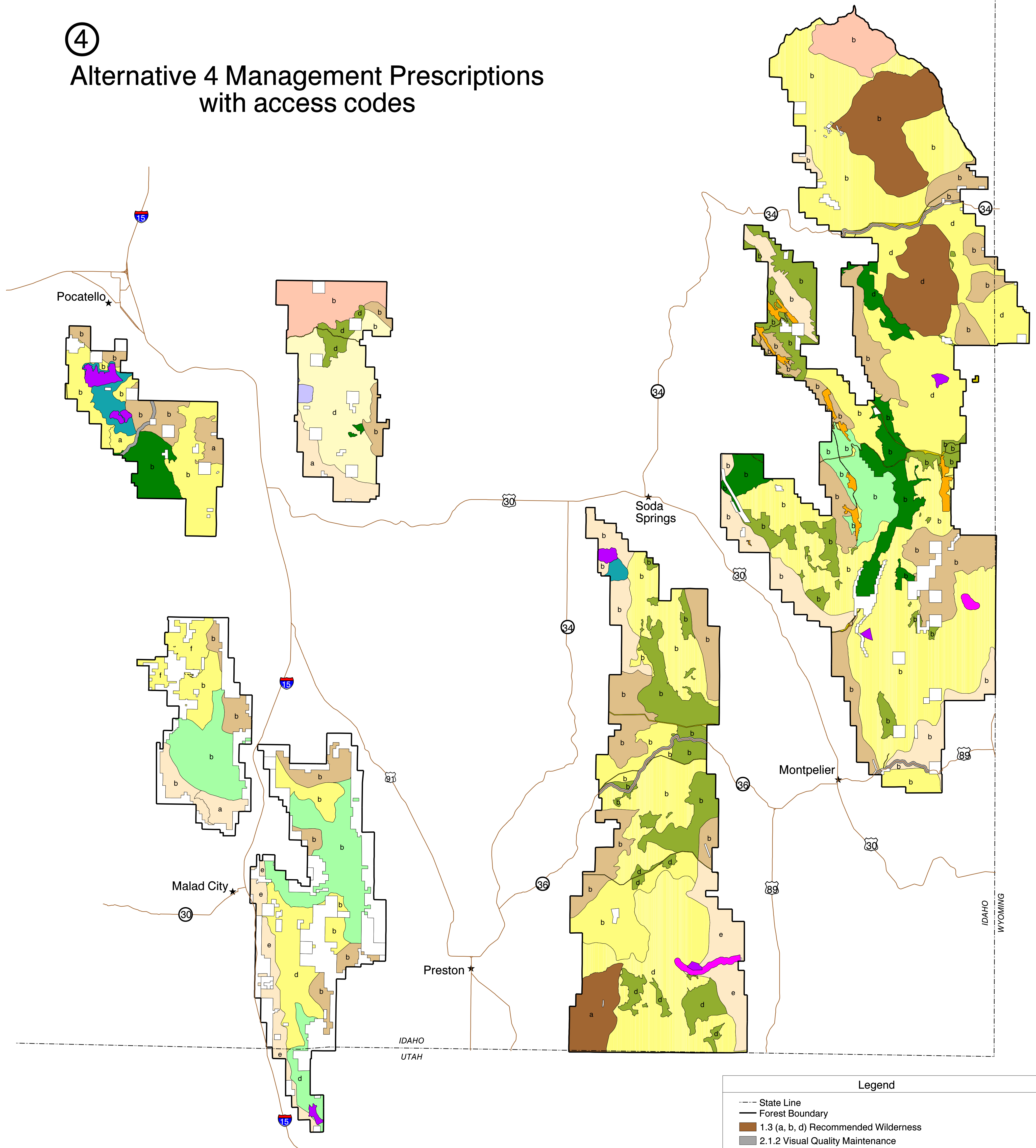


4

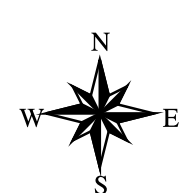
## Alternative 4 Management Prescriptions with access codes



Disclaimer:  
This product is reproduced from geospatial information prepared by the U.S. Department of Agriculture,  
Forest Service. GIS data and product accuracy may vary. They may be developed from sources of  
differing accuracy, accurate only at certain scales, based on modeling or interpretation, incomplete while  
being created or revised, etc. Using GIS products for purposes other than those for which they were created,  
may yield inaccurate or misleading results. This information was released in May, 2001. The Forest Service  
reserves the right to correct, update, modify, or replace, GIS products without notification.  
For more information, contact: Caribou - Targhee National Forest, 1405 Hollipark Drive, Idaho Falls, ID 83401.



### Forest Plan Revision Caribou - Targhee National Forest Caribou Zone Idaho, Wyoming and Utah Intermountain Region USDA Forest Service



**FINAL  
EIS**

February 2003

#### Legend

- State Line
  - Forest Boundary
  - 1.3 (a, b, d) Recommended Wilderness
  - 2.1.2 Visual Quality Maintenance
  - 2.1.3 Municipal Watersheds
  - 2.2 Research Natural Areas
  - 2.5 Wild & Scenic River - Eligible Recreation River
  - 2.7.1 (a, b, e) Elk & Deer Winter Range - Critical
  - 2.7.2 (a, b) Elk & Deer Winter Range
  - 2.8.3 Aquatic Influence Zone (AIZ) [not shown on map]
  - 3.1 (b) Non-motorized
  - 3.2 (b, d) Semi-primitive Motorized
  - 3.3 (a, b, d, f) Semi-primitive Motorized - Restoration
  - 4.2 Special Use Recreation Sites
  - 5.1 (b, d) Timber Management
  - 5.3 (b, d) Timber Management - Restoration
  - 6.1 Range Management
  - 6.3 (b, d) Range Management - Restoration
  - 8.1 Concentrated Development - Admin Sites, Utility Corridors
  - 8.2.1 Existing Mine Leases [not shown on map]
  - 8.2.2 Concentrated Development - Mines
  - Other Ownership
- 0 5 10 Miles  
Scale 1:250,000