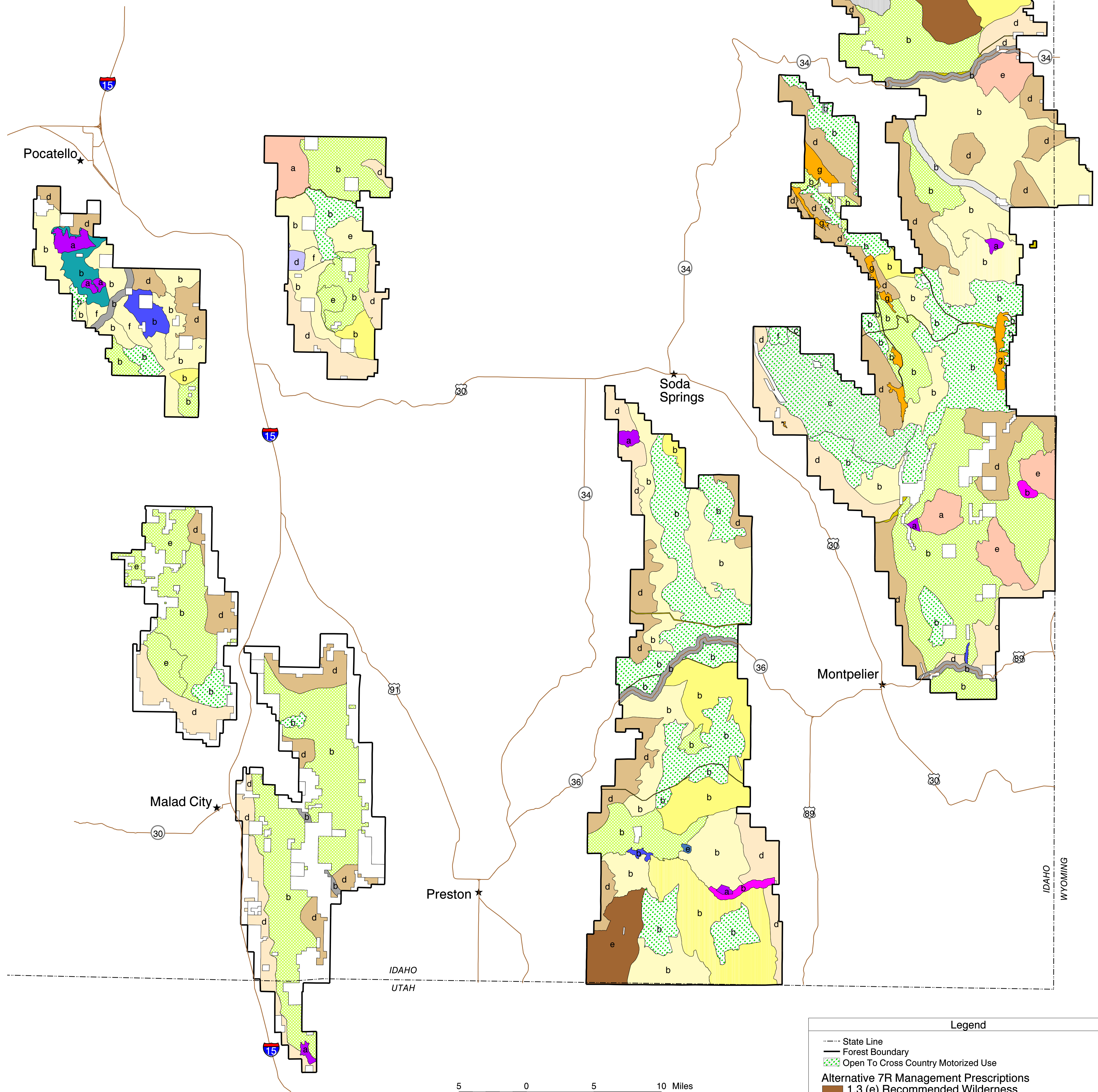


⑧

Alternative 7R Management Prescriptions with Access Codes

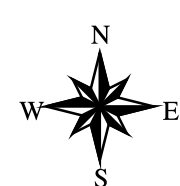


5 0 5 10 Miles
1:250000

Disclaimer:
This product is reproduced from geospatial information prepared by the U.S. Department of Agriculture,
Forest Service. GIS data and product accuracy may vary. They may be developed from sources of
differing accuracy, accurate only at certain scales, based on modeling or interpretation, incomplete while
being created or revised, etc. Using GIS products for purposes other than those for which they were created,
may yield inaccurate or misleading results. This information was released in February, 2003. The Forest Service
reserves the right to correct, update, modify, or replace, GIS products without notification.
For more information, contact: Caribou - Targhee National Forest, 1405 Hollipark Drive, Idaho Falls, ID 83401.



Forest Plan Revision Caribou - Targhee National Forest Caribou Zone Idaho, Wyoming and Utah Intermountain Region USDA Forest Service



**FINAL
EIS**
February 2003

Legend

- State Line
 - Forest Boundary
 - Open To Cross Country Motorized Use
- Alternative 7R Management Prescriptions**
- 1.3 (e) Recommended Wilderness
 - 2.1.1 (e) Bloomington Lake Special Emphasis Area
 - 2.1.2 (b) Visual Quality Maintenance
 - 2.1.3 (b) Municipal Watershed
 - 2.1.4 (b) Caribou Mountain Special Emphasis Area
 - 2.1.5 (b) Lander Trail Special Emphasis Area
 - 2.1.6 (b) Gravel Creek Special Emphasis Area
 - 2.2 (a) Research Natural Areas
 - 2.5 (b) Wild and Scenic - Eligible Recreation River
 - 2.7.1 (d) Elk and Deer Winter Range - Critical
 - 2.7.2 (d) Elk and Deer Winter Range
 - 2.8.3 (b) Aquatic Influence Zone (AIZ) [not shown on map]
 - 3.1 (a,e) Nonmotorized Recreation and Wildlife Security
 - 3.2 (b,e,f) Semi-primitive Recreation
 - 3.3 (b) Semi-primitive - Restoration
 - 4.1 (b) Developed Recreation Sites [not shown on map]
 - 4.2 (b,d) Special Use Recreation Sites
 - 4.3 (b) Dispersed Camping Management
 - 5.2 (b,c,f) Forest Vegetation Management
 - 6.2 (b,e) Rangeland Vegetation Management
 - 8.1 (b) Concentrated Development Areas
 - 8.2.1 (d) Inactive Phosphate Leases [not shown on map]
 - 8.2.2 (g) Phosphate Mine Areas
 - Other Ownership