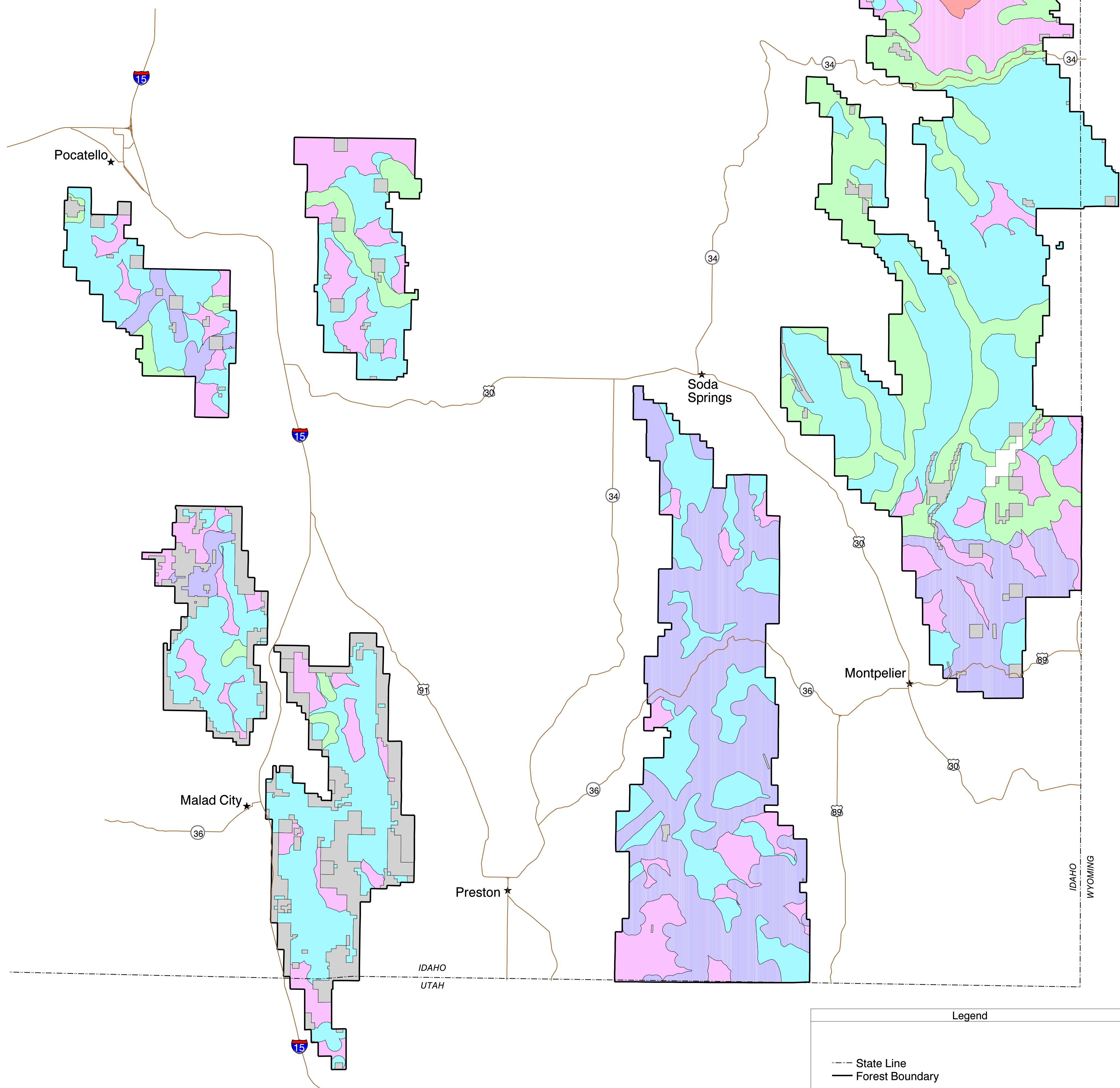


Recreation Opportunity Spectrum under Alternative 7R



Disclaimer:
This product is reproduced from geospatial information prepared by the U.S. Department of Agriculture, Forest Service. GIS data and product accuracy may vary. They may be developed from sources of differing accuracy, accurate only at certain scales, based on modeling or interpretation, incomplete while being created or revised, etc. Using GIS products for purposes other than those for which they were created, may yield inaccurate or misleading results. This information was released in May, 2001. The Forest Service reserves the right to correct, update, modify, or replace, GIS products without notification. For more information, contact: Caribou - Targhee National Forest, 1405 Hollipark Drive, Idaho Falls, ID 83401.



Forest Plan Revision Caribou - Targhee National Forest Caribou Zone

Idaho, Wyoming and Utah

**Intermountain Region
USDA Forest Service**



**FINAL
EIS**
February 2003

Legend

--- State Line
— Forest Boundary

Recreation Opportunity Spectrum - Current
■ Roaded Modified
■ Roaded Natural
■ Semi-Primitive Motorized
■ Semi-Primitive Non-Motorized
■ Primitive
■ Private or State Land

5 0 5 10 Miles
Scale 1:250,000