

# Mark Twain National Forest

*Missouri*

## Audubon Trail



Eastern Region, USDA Forest Service

October 5, 2010.

### Highlights

This is a 12 mile circular loop trail. The trail was established by the BSA (Boy Scouts of America) as a memorial pilgrimage hike through an area that the great naturalist and artist John J. Audubon visited on his wide ranging bird collecting trips, while living in Ste. Genevieve, MO.

### Trail

The trail has two separate 6-mile loops, one north and one south of Forest Road 2199 (becomes Bidwell Creek Rd). The trail route is marked with 2" x 6" white paint blazes. The terrain is sometimes steep with vertical relief of up to 300 feet. Much of the route is along perennial creeks, and creek crossings are not bridged. There are several open glades or meadows along the trail. The primary trailhead is at the Bidwell Creek Ford on FR 2199 (becomes Bidwell Creek Rd). The trail is open to hiking, mountain bike and equestrian use.

Occasional steep rocky hills and sharp curves make mountain biking challenging, and sections of the trail are not suitable for beginners.

### Other Activities

Backpacking, bird watching, and primitive camping can be enjoyed.

### For More Information

*Potosi/Fredericktown Ranger District*  
10019 Hwy 8 West, Potosi, MO 63664  
Phone: (573) 438-5427 Fax: (573) 438-2633  
Hours: Monday-Friday, 8 am-4:30 pm

**Directions:** From Fredericktown, MO, 9 miles north on Hwy OO, 5 miles east on Hwy T, 4.6 miles north on Forest Road 2199 (becomes Bidwell Creek Rd) to the Bidwell Creek Ford.

**Difficulty Level:** Moderate to more difficult

**Length:** 12 miles

**Best Seasons:** Fall, winter, spring

**Leave No Trace:** Pack out what you pack in

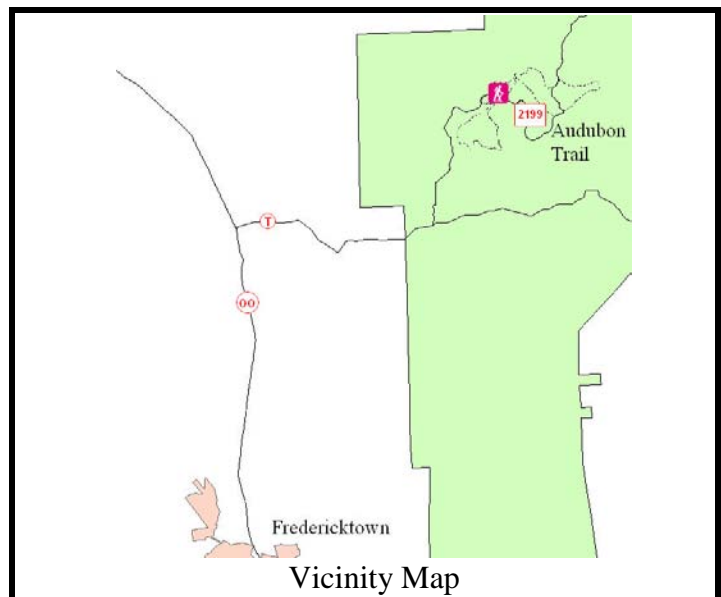
**Restrictions:** No motorized use.

**Safety:** During temperate months, be prepared for biting insects, poison ivy and high temperatures. Be advised of hunting seasons. Avoid using the trail during excessively wet periods.

**Ste. Genevieve County Sheriff** 573-883-5820

**Ste. Genevieve County Hospital** 573-883-2751

**Surface Type:** Unsurfaced, native materials. Trail tread is often rough and of variable width.



“The USDA is an equal opportunity provider and employer.”

**Mark Twain National Forest**

401 Fairgrounds Road, Rolla, MO 65401

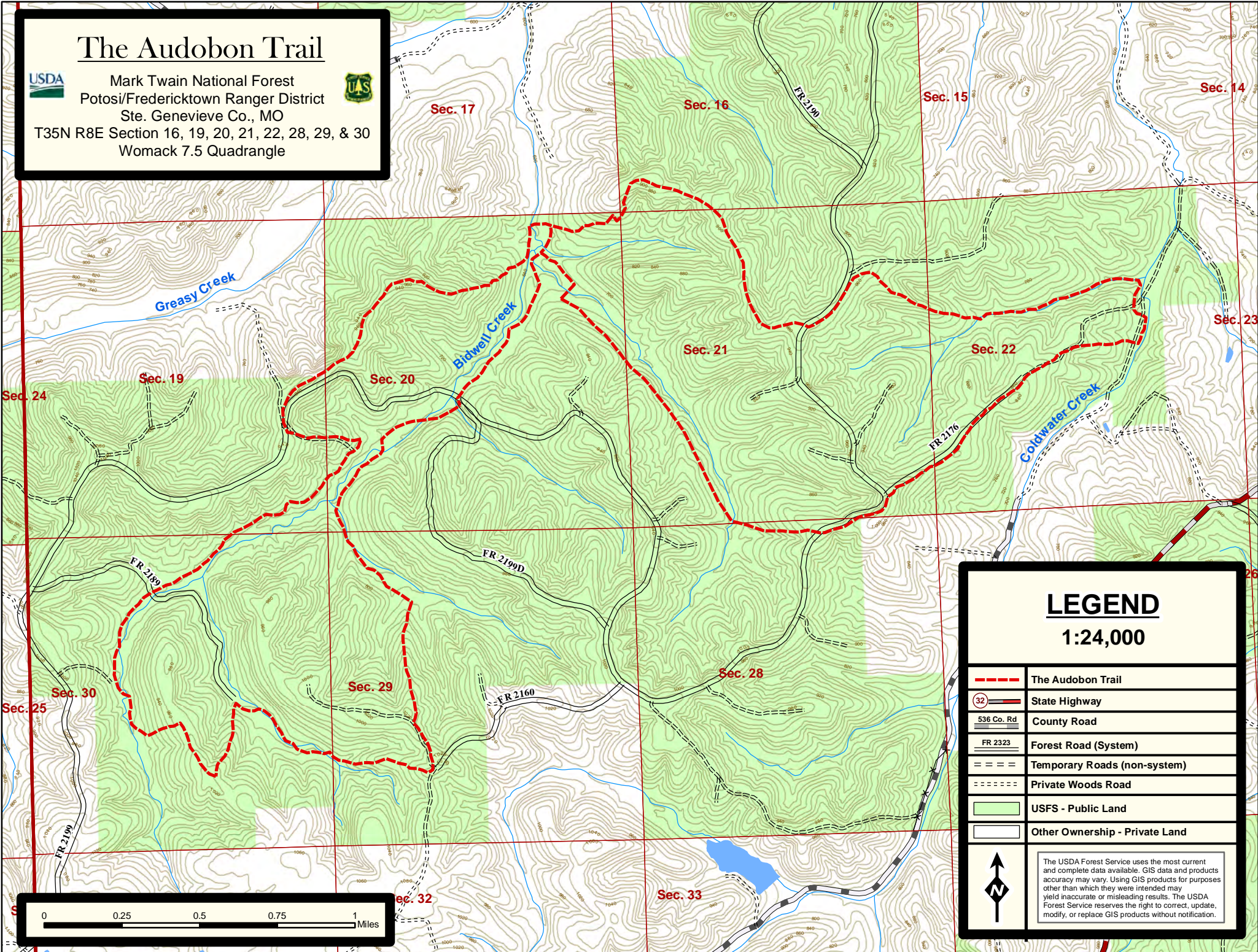
<http://www.fs.usda.gov/mtnf/>



# The Audobon Trail



Mark Twain National Forest  
 Potosi/Fredericktown Ranger District  
 Ste. Genevieve Co., MO  
 T35N R8E Section 16, 19, 20, 21, 22, 28, 29, & 30  
 Womack 7.5 Quadrangle



## LEGEND

1:24,000

	The Audobon Trail
	State Highway
	County Road
	County Road
	Forest Road (System)
	Temporary Roads (non-system)
	Private Woods Road
	USFS - Public Land
	Other Ownership - Private Land
	<p>The USDA Forest Service uses the most current and complete data available. GIS data and products accuracy may vary. Using GIS products for purposes other than which they were intended may yield inaccurate or misleading results. The USDA Forest Service reserves the right to correct, update, modify, or replace GIS products without notification.</p>

