

Welcome to the Athens Ranger District Horse Trails

The Athens Ranger District (Athens and Marietta Units) provides excellent opportunities for scenic horseback riding through a variety of vegetation: open fields, brushland, mature forest, and new forest. All horse trails are marked with gray diamonds. Maps show locations and configurations of the trails and loops, trailheads, and parking areas. The topography lines were included in order to give riders perspective on which trails provided a more challenging ride.

All horse trails are open to hikers as well. In addition, the Kinderhook and Plainview Horse Trail systems are open to mountain biking. For safety, please slow down and yield the right of way to horses and their riders.

- Yield the Right of Way**
- Mountain bikers yield to horse riders.
  - Hikers yield to horse riders.
  - Horse riders, control your horses.



Legend

- Horse Trail
- Recreation Sites
  - Campground
  - Trailhead
- Roads
  - State Route
  - County Road
  - Township Road
  - Municipal Street
  - Forest Service Road
- Elevation Points
- Wayne National Forest

Map Projection: Universal Transverse Mercator, Zone 17 North  
Map Datum: North American Datum, 1983  
Contour Interval: 20 feet

This map supercedes all previous maps.

1:25,000

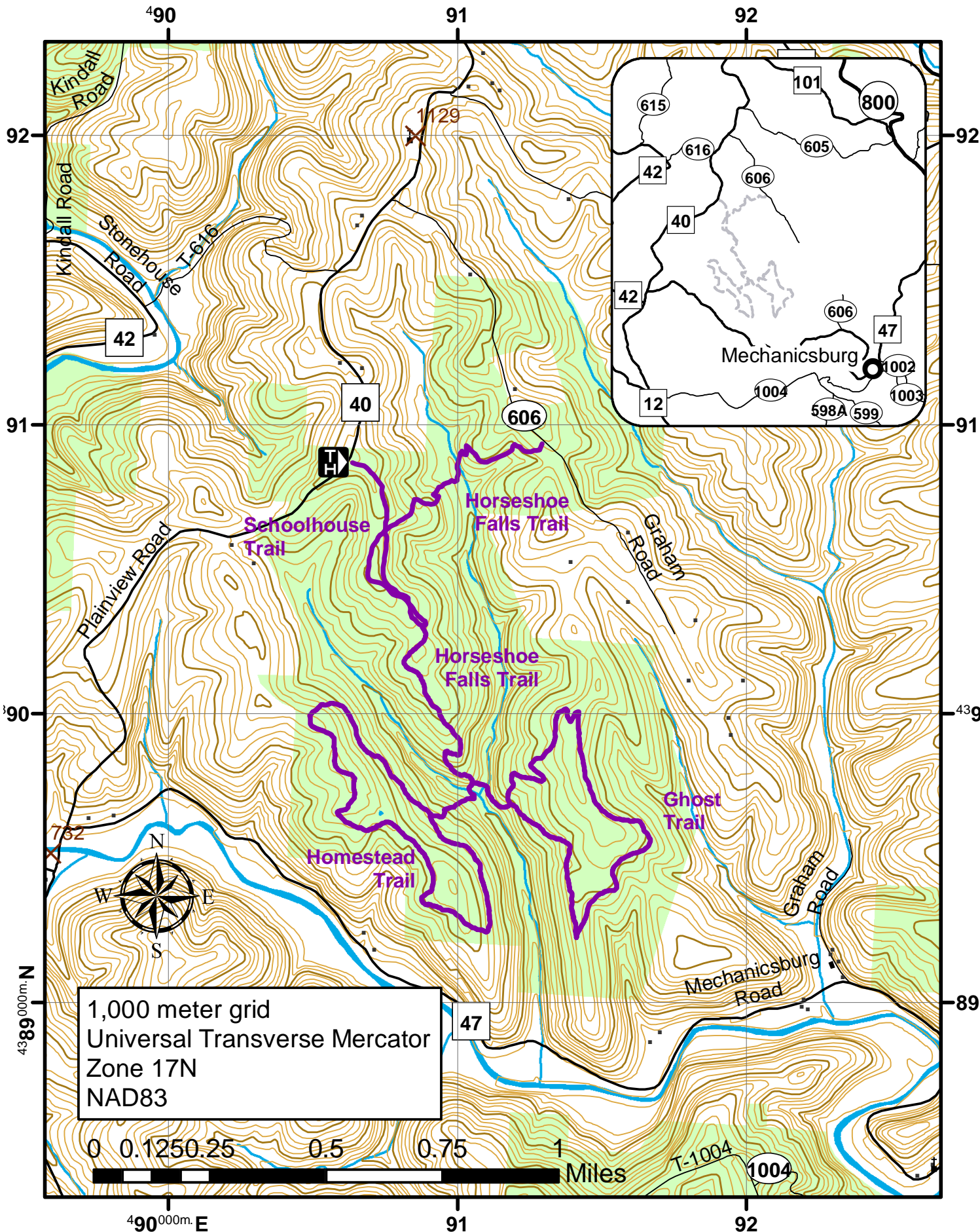
1 inch = 0.39 miles

Kinderhook Horse Trail

The 19-mile Kinderhook Trail in Washington County winds through some of the steepest and most scenic hills on the Forest. Camping is allowed at the Kinderhook Trailhead, and water for horses is available there. No fee is charged.

Kinderhook Trailhead Directions:

**Kinderhook Trailhead** - From Marietta, follow State Hwy 7 North, 15 miles, through Newport. 1/2 mile past Newport, at the Wayne NF sign, turn left on Dana's Run Road (CR 244). Drive about 3/4 mile on Dana's Run Road, then turn right into the trailhead @ 81° 13' 30.58" W; 39° 24' 22.46" N.



Plainview Horse Trail

The new Plainview Horse Trail in Monroe County is five miles long. It winds through mature upland and bottomland hardwood stands. The trail features a wonderful view of Horseshoe Falls, an eight-foot waterfall at the convergence of two streams.

Plainview Horse Trail Directions:

**From Fly, Ohio:** Take State Route 800 north for 10.4 miles. Turn left onto Township Road 605 (McAfee Rd.) and go 1.6 miles. Turn left onto County Road 40 (Plainview Rd.) and go 0.3 miles. Turn left onto Township Road 606 (Graham Rd.) and go 0.7 miles. The trail will be on the right side of the road.

**From Woodfield, Ohio:** Take State Route 26 south for 2.3 miles. Turn left onto State Route 800 and go 1.3 miles. Turn right onto County Road 40 (Plainview Rd.) and go 0.4 miles. Turn left onto Township Road 606 (Graham Rd.) and go 0.7 miles. The trail will be on the right side of the road.

Stone Church Horse Trail

The 21-mile Stone Church Trail winds through rolling hills in Perry County. Its trailhead provides a camp specifically for equestrians. There are 10 campsites, and each has a covered paddock, fire pit, grill, tent pad, and parking space to accommodate vehicles with trailers (45' long by 15' wide).

The trail system is named for the skeletal ruins of an old stone church nearby. Near the trailhead is all that remains of a once thriving community. The haunting arched walls of the St. Peter's Catholic Church and almost 100 tombstones were once the centerpiece of a community of people who lived in these hills. The church was built in 1845 and Dominican priests came to give the first mass here.

During the Civil War, the iron ore in the surrounding hills was mined to make cannon balls for the Union Army. According to legend, sometime shortly after the War, a plague struck and wiped out the community. The church fell into disrepair and was closed.

Another version of local history maintains that with the boom of the iron mines, so many Catho-



lies moved into the area that a new church was built in nearby New Straitsville. New Straitsville's St. Augustine Catholic Church was built in 1871, and the old stone St. Peters Church may have been abandoned. The 128-year old St. Augustine Church was razed in 1990, leaving the ruins of the stone church the only visible sign of a once prosperous Catholic parish. The stone church and cemetery are on private land. Please treat them with the respect they deserve.



Section of Stone Church Horse Trail

Stone Church Trailhead Directions:

**From Logan:** Follow State Route 93 North, 14 miles to Shawnee, continue on 93 N 1.5 miles then turn left on County Road (CR) 38. Stone Church Campground is approximately 3/4 of a mile west of 93. Stone Church Trailhead is 3/4 mile further on CR 38.

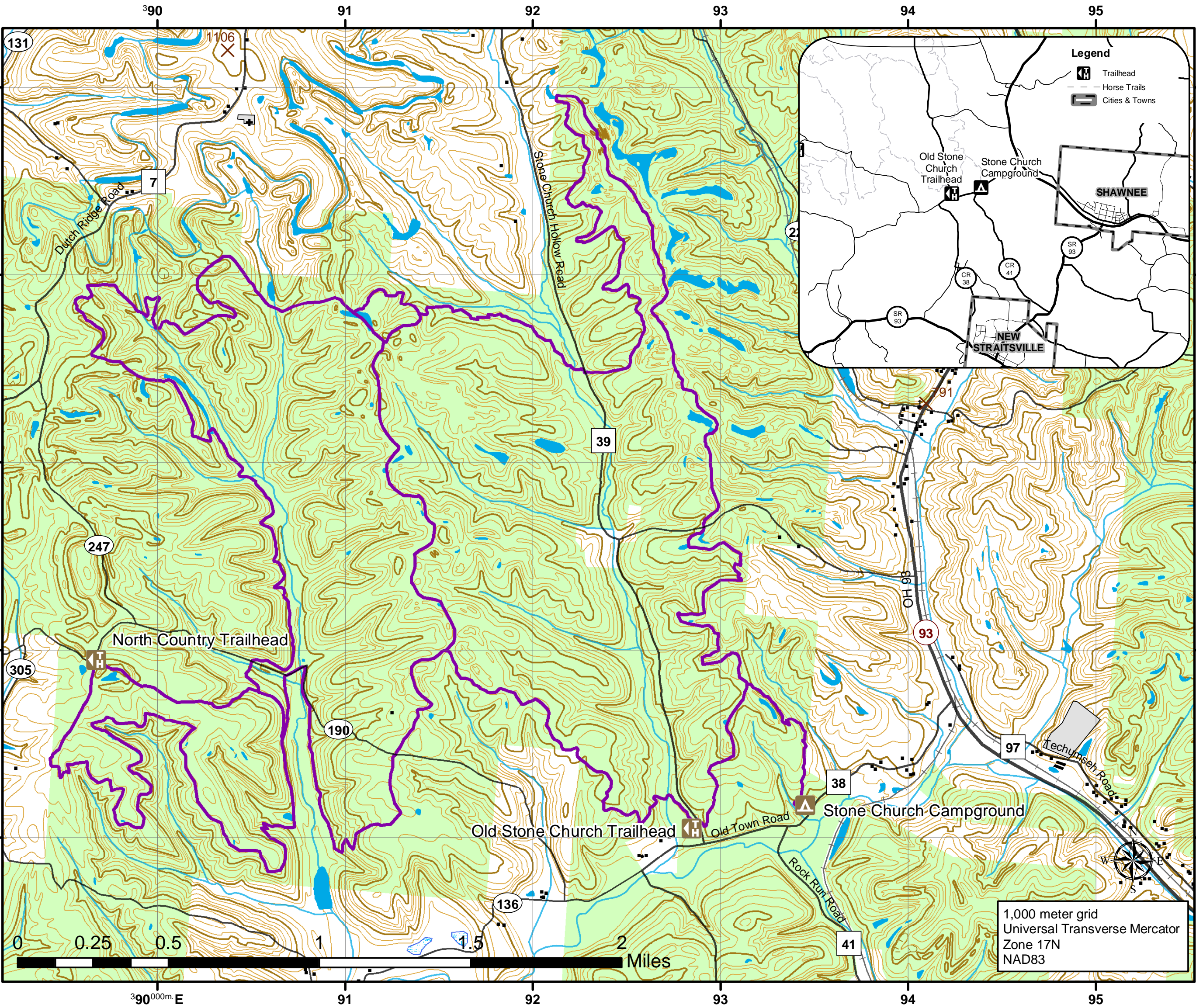
**From Zanesville:** Follow State Route 93 South, 31 miles to McCuneville, continue on 93 S 1.3 miles then turn right on CR 38. Stone Church Campground is approximately 3/4 of a mile west of 93. Stone Church Trailhead is 3/4 mile further on CR 38.

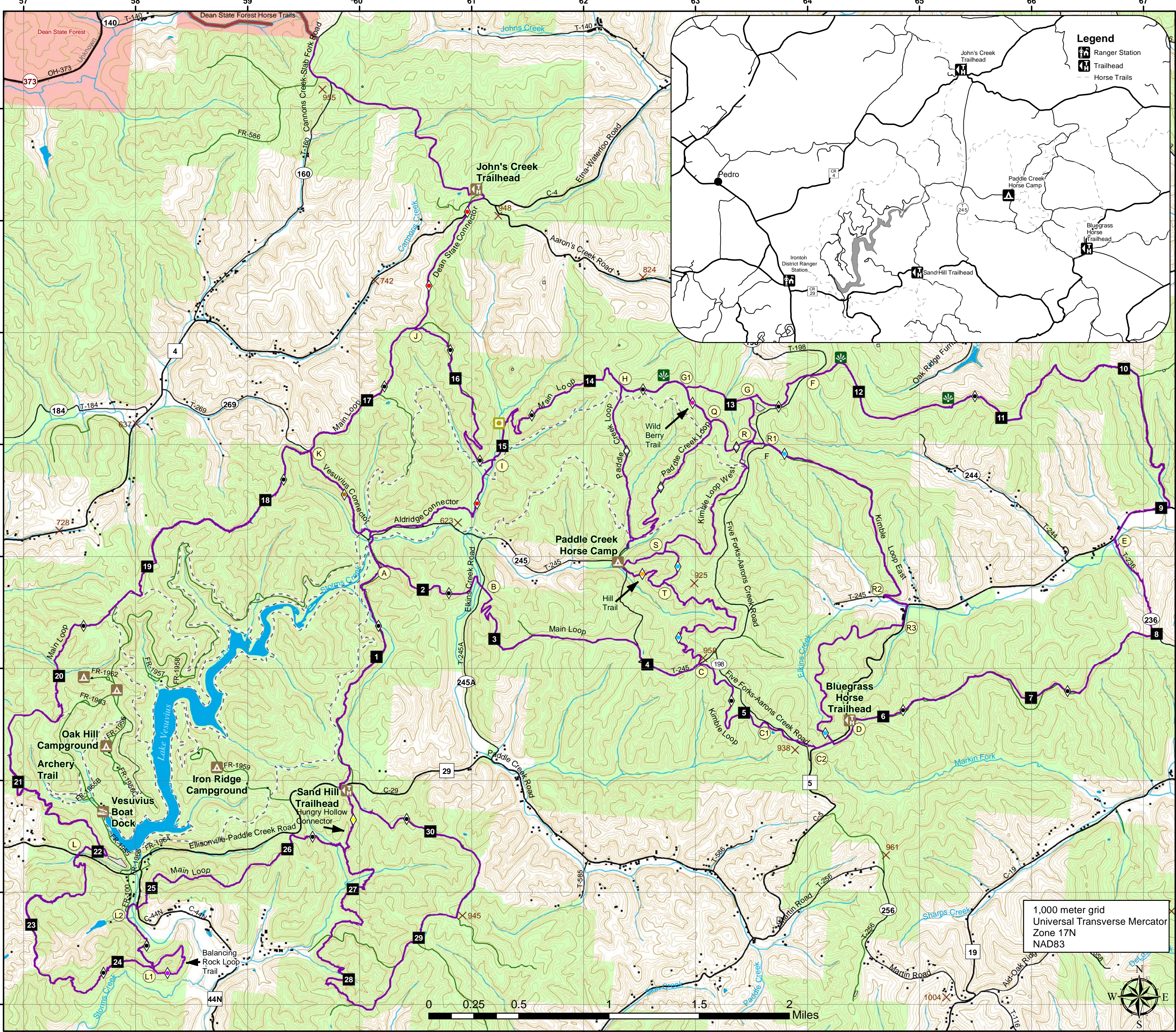
**From Athens:** Follow State Route 13 North, 20 miles to Corning, turn right, west on State Route 155, 8 miles to Shawnee. Follow 93 N 1.5 miles then turn left on CR 38. Stone Church Campground is approximately 3/4 of a mile west of 93. Stone Church Trailhead is 3/4 mile further on CR 38.

- Stone Church Horsecamp** - 82° 14' 32.32" W; 39° 36' 39.57" N
- Stone Church Trailhead** - 0.75 mile west of Stone Church Horsecamp on CR 38 @ 82° 14' 51.88" W; 39° 36' 31.51" N.
- North Country Trail Trailhead for Stone Church Trail** - along Forest Road 3201 @ 82° 16' 54.47" W; 39° 36' 54.70" N.

Stone Church Horsecamp

- This camp provides facilities for horses and horse trailers.
- Ten sites are provided, each with a 45-foot long by 15-foot wide parking space.
  - Two sites are fully accessible.
  - Each site includes a covered paddock, fire pit, grill, and tent pad. A vault toilet is available.
  - Drinking water is provided in a tank for horses, bring buckets or jugs to carry water.
  - Before vacating your campsite, clean out the paddocks and put manure in the manure bin.
  - A self-service camping fee is charged for the camp ground. See the website for current fee.
  - If the campground is full, overflow camping is allowed at the Stone Church Trailhead.
  - The campground is closed December 15 - April 14.





## Welcome to the Vesuvius Horse Trail

In the Ironton Ranger District, approximately 46 miles of scenic trails wind through some of the most striking landscapes in Ohio. They will lead you through a variety of vegetation where many species of wildlife live. You may see open fields, brushland, mature forest, and young forests. Along the way, you can notice man's influence and land management activities.

Routes include sections of easy as well as difficult trails. Please use caution on steep slopes.

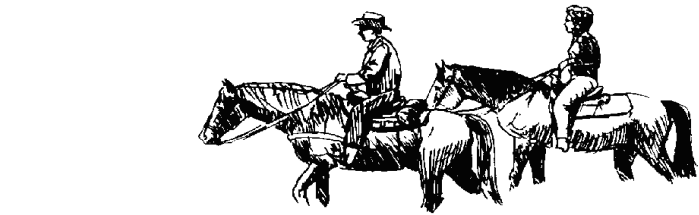
The **Vesuvius Horse Trails** may be accessed from three trailheads:

**Sand Hill:** Take State Route 93 north from Ironton approximately 7 miles. Turn right at the Lake Vesuvius Recreation Area sign and travel approximately 3 miles on County Road 29 to the Sand Hill Trailhead.

**Paddle Creek:** Take State Route 93 north from Ironton approximately 7 miles. Turn right at the Lake Vesuvius Recreation Area sign and travel approximately 4 miles on County Road 29 to Elkins Creek Road (T-245A). Turn left onto Township Road 245A and travel approximately 2 miles, which dead-ends at Paddle Creek Trailhead.

**Johns Creek:** Take State Route 93 north out of Ironton for approximately 7 miles. Turn right at the Johns Creek Trailhead sign and travel approximately 5 miles on County Road 4 to the Johns Creek Trailhead.

**Bluegrass Trailhead:** Take State Route 93 North out of Ironton for approximately 7 miles. Turn right at the Lake Vesuvius Recreation Area sign (County Road 29) and travel approximately 5.4 miles on County Road 29 to the intersection of County Road 5. Turn left at County Road 5 intersection and travel approximately 1.7 miles to the Bluegrass Trailhead.



Obey all state traffic laws when riding on public roads.



In case of emergency call 911.  
For non-emergencies call  
Lawrence County Sheriff @ 740-532-3525



In Case of Accident or Injury:

Nearest hospitals to Vesuvius trails:  
Kings Daughters Hospital - 606-327-4000  
Our Lady of Bellefonte Hospital - 606-833-3333  
St Marys Medical Center - 740-533-9710

If you suspect a back or neck injury, do NOT move the rider. A medical team will assist the injured rider.

### Trailhead and Marked Intersection Locations

Trailhead	Longitude	Latitude
Paddle Creek	82° 34' 53.72" W	38° 37' 51.18" N
John's Creek	82° 35' 49.52" W	38° 39' 36.71" N
Bluegrass Horse	82° 33' 20.73" W	38° 37' 7.83" N
Sand Hill	82° 36' 31.55" W	38° 36' 41.87" N

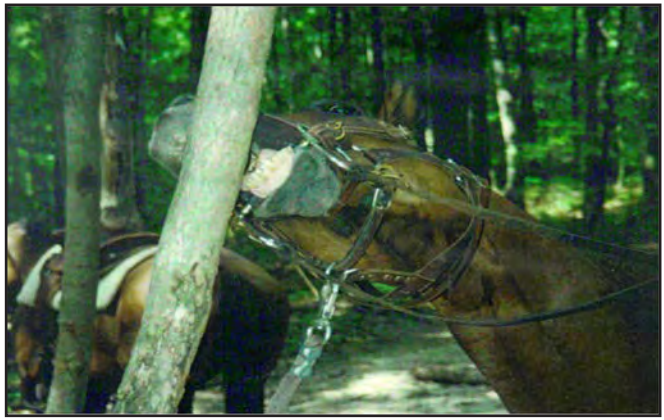
### Signed Intersections

A	82° 36' 21.49" W	38° 37' 44.82" N
B	82° 35' 40.96" W	38° 37' 41.46" N
C	82° 33' 59.50" W	38° 37' 0.02" N
D	82° 33' 25.20" W	38° 37' 2.00" N
E	82° 31' 48.33" W	38° 37' 57.82" N
F	82° 34' 0.98" W	38° 38' 20.62" N
G	82° 34' 20.66" W	38° 38' 33.83" N
H	82° 34' 53.82" W	38° 38' 42.30" N
I	82° 35' 38.69" W	38° 38' 16.48" N
J	82° 36' 11.38" W	38° 38' 53.63" N
K	82° 36' 46.35" W	38° 38' 19.03" N
L	82° 38' 14.08" W	38° 36' 24.59" N

## Planning Your Ride

All horse trails are marked with gray diamonds. Trails connectors and loops can be distinguished by different color dots on the gray diamond. The main loop is marked with a gray diamond with no dot color.

SYMBOL	TRAIL NAME	MILEAGE	TRAIL MARKER COLOR
ML	Main Loop Horse Trail	33.31	Gray Diamonds
KL	Kimble Loop	5.67	Gray Diamonds with Blue Dots
BR	Balancing Rock Loop	0.60	Gray Diamonds
PL	Paddle Creek Loop	2.18	Gray Diamonds with White Dots
PCC	Paddle Creek TH Connector	0.08	Gray Diamonds with White Dots
DSC	Dean State Connector	2.75	Gray Diamonds with Red Dots
HHC	Hungry Hollow Connector	0.5	Gray Diamonds with Blue Dots
SHC	Sand Hill TH Connector	0.04	Gray Diamonds with Blue Dots
AC	Aldridge Connector	1.10	Gray Diamonds with Red Dots
VC	Vesuvius Connector	1.03	Gray Diamonds with Brown Dots



## Remember...

- Camp, wash, and bury human waste at least 200 feet from water and trails. Pack out everything you pack in.
- A lightweight stove is practical, easy and does not leave a fire scar.
- Keep the area wild and natural. Don't build structures or blaze trees. Remove any rope or flagging.
- Tie horses on a line between trees out of reach of individual trees to prevent them from eating the bark.

## Lake Vesuvius Horse Trails

### Legend

- Horse Trail (Dot Color Matches Trail Markers)
- Trail Closed to Horses

### Recreation Sites

- Boat Launch
- Campground
- Trailhead/Parking

### Roads

- Forest Service Road
- State Route
- County Road
- Township Road
- Municipal Street
- Elevation Points
- Wayne National Forest
- State of Ohio Land
- Signed Intersections

Map Projection: Universal Transverse Mercator, Zone 17 North  
Map Datum: North American Datum, 1983  
Contour Interval: 20 feet

This map supercedes all previous maps.



Maps were partially funded by a grant from the Recreational Trails Program (RTP).

### USDA Nondiscrimination Statement

In accordance with Federal civil rights law and U.S. Department of Agriculture (USDA) civil rights regulations and policies, the USDA, its Agencies, offices, and employees, and institutions participating in or administering USDA programs are prohibited from discriminating based on race, color, national origin, religion, sex, gender identity (including gender expression), sexual orientation, disability, age, marital status, family/parental status, income derived from a public assistance program, political beliefs, or reprisal or retaliation for prior civil rights activity, in any program or activity conducted or funded by USDA (not all bases apply to all programs). Remedies and complaint filing deadlines vary by program or incident.

Persons with disabilities who require alternative means of communication for program information (e.g., Braille, large print, audiotape, American Sign Language, etc.) should contact the responsible Agency or USDA's TARGET Center at (202) 720-2600 (voice and TTY) or contact USDA through the Federal Relay Service at (800) 877-8339. Additionally, program information may be made available in languages other than English.

To file a program discrimination complaint, complete the USDA Program Discrimination Complaint Form, AD-3027, found online at [http://www.ascr.usda.gov/complaint\\_filing\\_cust.html](http://www.ascr.usda.gov/complaint_filing_cust.html) and at any USDA office or write a letter addressed to USDA and provide in the letter all of the information requested in the form. To request a copy of the complaint form, call (866) 632-9992. Submit your completed form or letter to USDA by: (1) mail: U.S. Department of Agriculture, Office of the Assistant Secretary for Civil Rights, 1400 Independence Avenue, SW, Washington, D.C. 20250-9410; (2) fax: (202) 690-7442; or (3) email: [program.intake@usda.gov](mailto:program.intake@usda.gov).



## For Your Information:

- Private land surrounds trail routes. Please stay on marked trails to avoid riding on private land. Respect the landowner's rights.
- Horses are permitted on designated horse trails or open public roads. A designated horse trail is a trail marked by gray diamond blazes.
- Cross country travel is discouraged.
- Please do not ride on unmarked trails or hiking trails.
- National Forest lands are open to public hunting. Please be aware of the various hunting seasons and plan your trail ride accordingly.
- Sections of the horse trail cross or follow township and county roads. Please use caution when traveling on these motorized routes.
- Camping may be done in small openings along the trail but no vegetation should be cut and all fires must be extinguished before leaving camp.
- Bring your own water. Water in streams may be used for horses, but is unsafe for human consumption.
- Be alert for ticks, snakes, and poison ivy.
- Pack out everything you pack in.
- For safety, please don't ride alone. Let someone know where you'll be riding and when to expect you back. Riders younger than 16 should be accompanied by an adult.
- Please notify our offices of any down trees across the trail or any other trail problems.
- Possession, consumption, or distribution of an alcoholic beverage in violation of State of Ohio law and National Forest Special Order.



Plan Ahead and Prepare  
Travel and Camp on Durable Surfaces  
Dispose of Waste Properly  
Leave What You Find  
Minimize Campfire Impacts  
Respect Wildlife  
Be Considerate of other Visitors

## Wayne National Forest Horse Trails



Forest Service

FS-R9-006  
02/2020

## Tread Lightly on the Wayne National Forest.

Travel only on designated trails.

Respect the rights of hikers, bicyclists, campers, and others to enjoy their activities undisturbed.

Educate yourself by obtaining travel maps and regulations; comply with signs and barriers; and ask owners' permission to cross private property. Learn the rules and follow them.

Avoid streams and wildlife, and do not cut across a switchback.

Do all you can to be responsible and protect the environment.



Horseback trails are managed out of three Wayne National Forest offices:

Athens Ranger District  
13700 U.S. Highway 33  
Nelsonville, OH 45764  
Phone: 740-753-0101

Ironton Ranger District  
6518 State Route 93  
Pedro, OH 45659  
Phone: 740-534-6500

Marietta Unit  
27750 State Route 7  
Marietta, OH 45750  
Phone: 740-373-9055

Federal relay: 1-800-877-8339  
website: [www.fs.usda.gov/wayne](http://www.fs.usda.gov/wayne)  
[www.facebook.com/waynenationalforest](https://www.facebook.com/waynenationalforest)  
[twitter.com/WayneNationalFS](https://twitter.com/WayneNationalFS)



## Help us Fight Vandalism

Vandalism continues to take a large toll on the limited dollars we have to operate our trails and trailheads. Damage to the area varies from destroying toilet buildings and bulletin boards, to riding off designated trails, damaging natural features and vegetation.

We need the assistance of all riders to combat vandalism. If you observe anyone destroying or defacing property, please report it to a local law enforcement officer or call one of the Forest offices. Phone numbers are posted at the trailheads. Any descriptive information such as license numbers or model and make of vehicles is appreciated.

