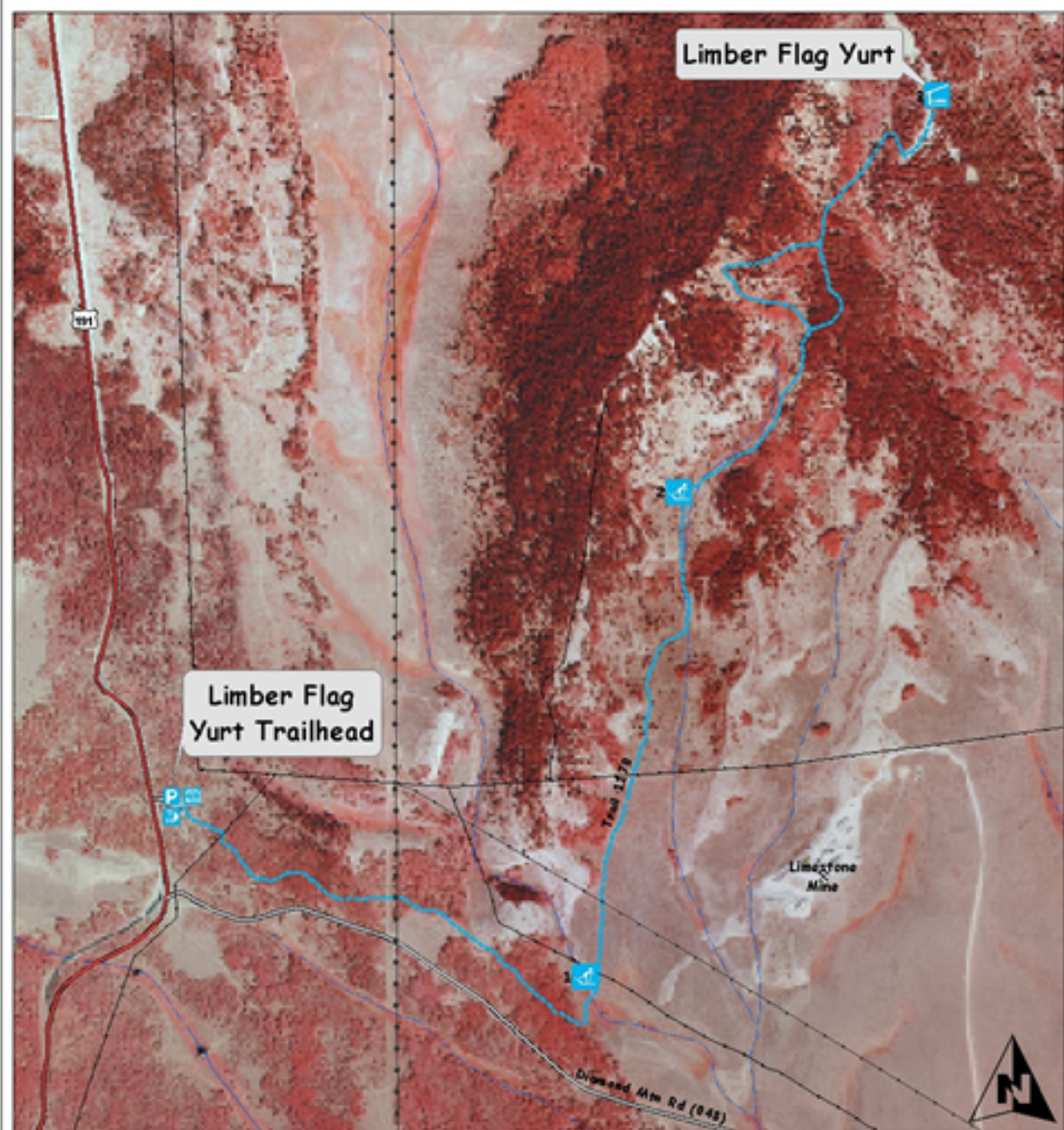


Limber Flag Yurt Cross-country Ski Trail



1:12,000

0 0.25 0.5 1 Miles

Legend

- | | | |
|--|--|--|
| | | |
| | | |
| | | |
| | | |
| | | |
| | | |

**LIMBER FLAG YURT
COORDINATES**
UTM: 631561E
4511540N
Lat/Long: 109°26'30" W
40°44'39" N

TRAIL INFO:

Rating--Difficult due to climb and navigating around trees
Distance--Approx. 3 miles from trailhead to yurt; 6 miles round trip
Time--2 hours to yurt under favorable conditions; > 1 hour return trip
Desc--The trail winds through aspen groves, open landscapes, and conifer forest

YURT INFO:

YURT ACCESS BY RESERVATION ONLY
Reservations--(435) 789-1181
Amenities--2 bunk beds, propane, outhouse