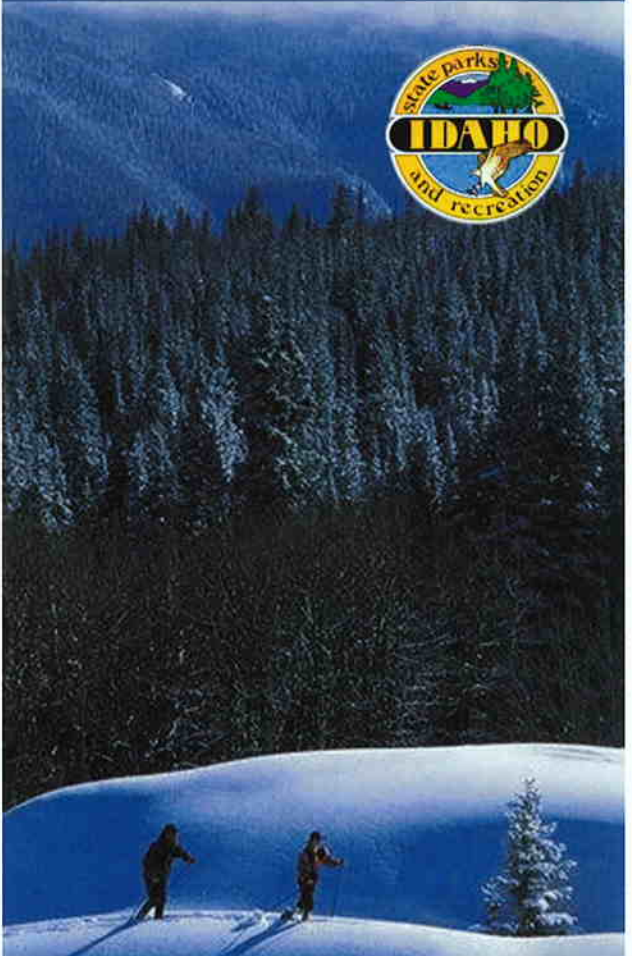


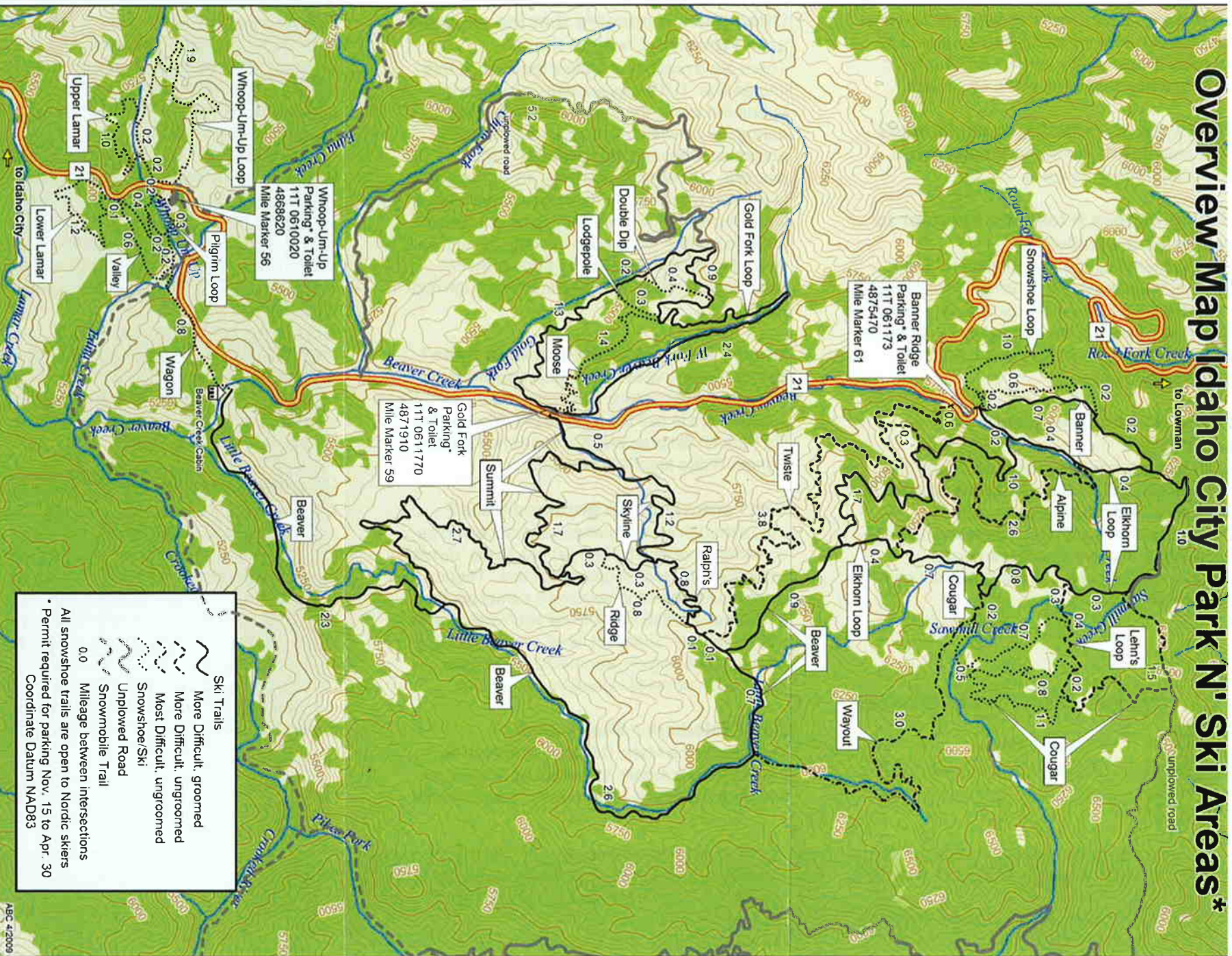
Park N' Ski

Idaho City Area - Map / FAQ's



www.parksandrecreation.idaho.gov

Overview Map Idaho City Park N' Ski Areas*



Ski Trails

- More Difficult, groomed
- More Difficult, ungroomed
- Most Difficult, ungroomed
- Snowshoe/Ski
- Unpaved Road
- Snowmobile Trail

Mileage between intersections
 0.0
 All snowshoe trails are open to Nordic skiers
 * Permit required for parking Nov. 15 to Apr. 30
 Coordinate Datum NAD83

Data use subject to license.
 © Delorme - XMap® 6.
 www.delorme.com

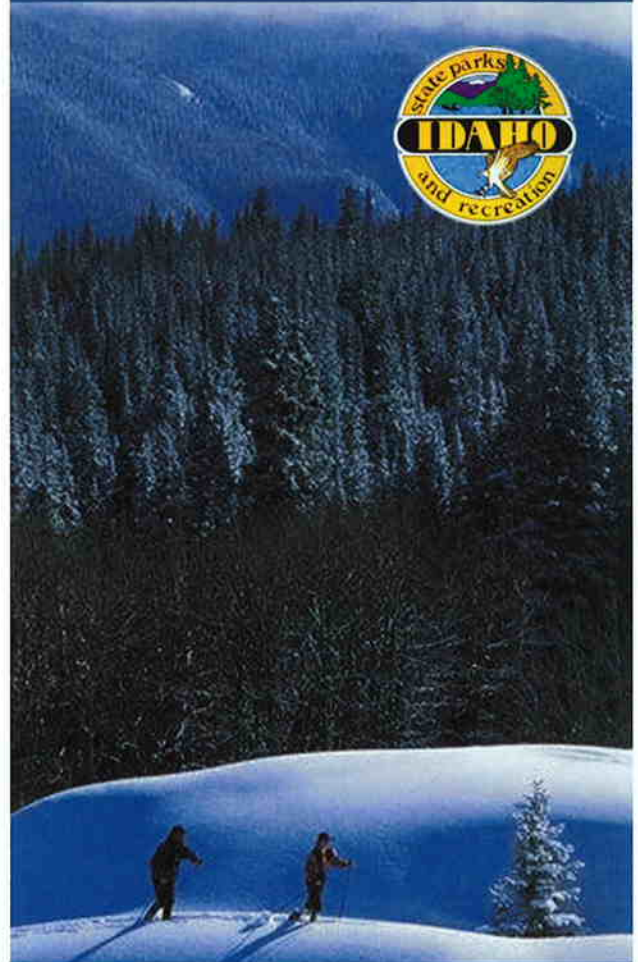


Scale 1 : 43,750
 1" = 3,645.8 ft
 Data Zoom 12-0

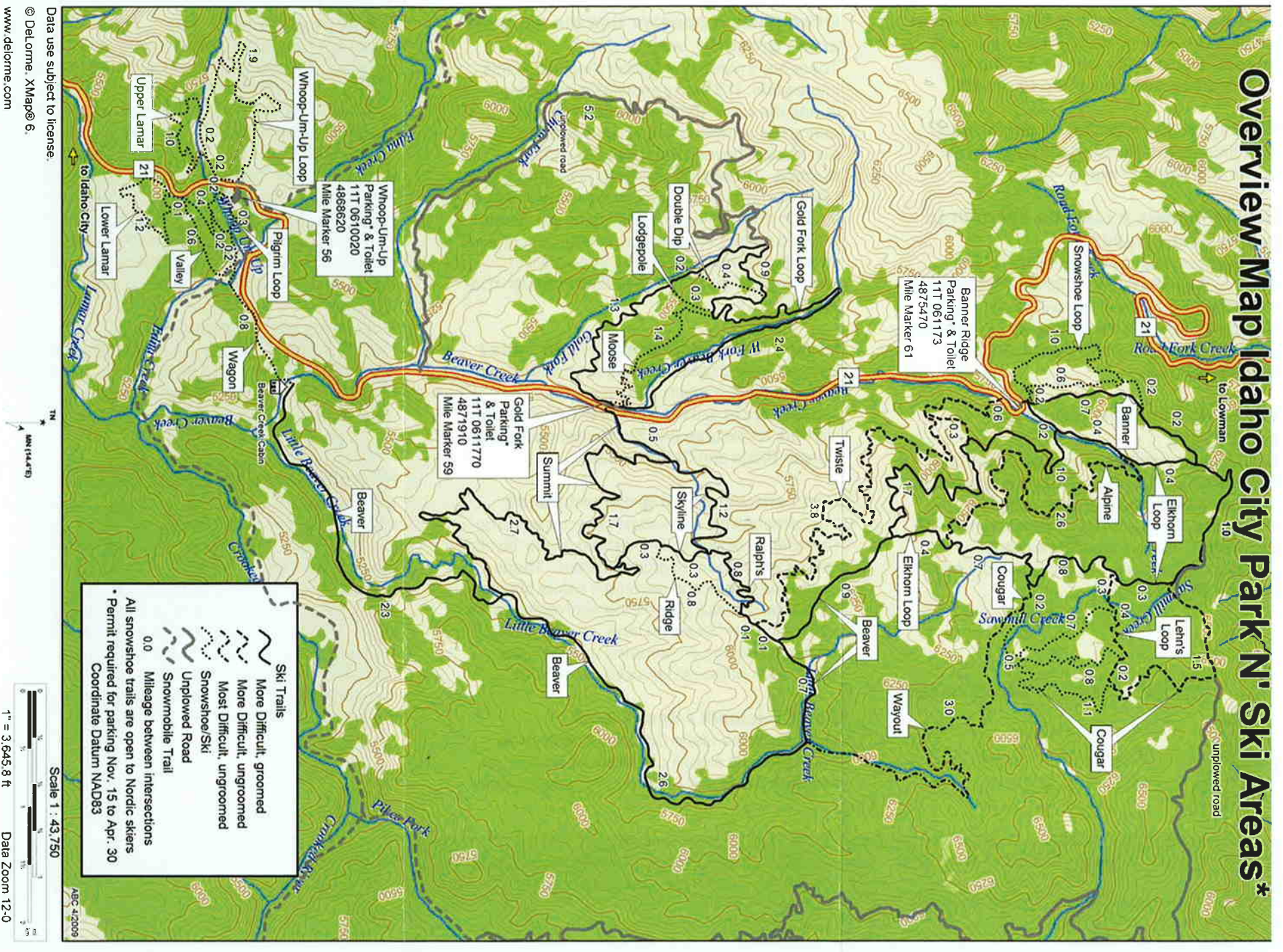
More detailed maps are available for download at: <http://parksandrecreation.idaho.gov/recreation/southernidahoparknski.aspx>

Park N' Ski

Idaho City Area - Map / FAQ's



www.parksandrecreation.idaho.gov

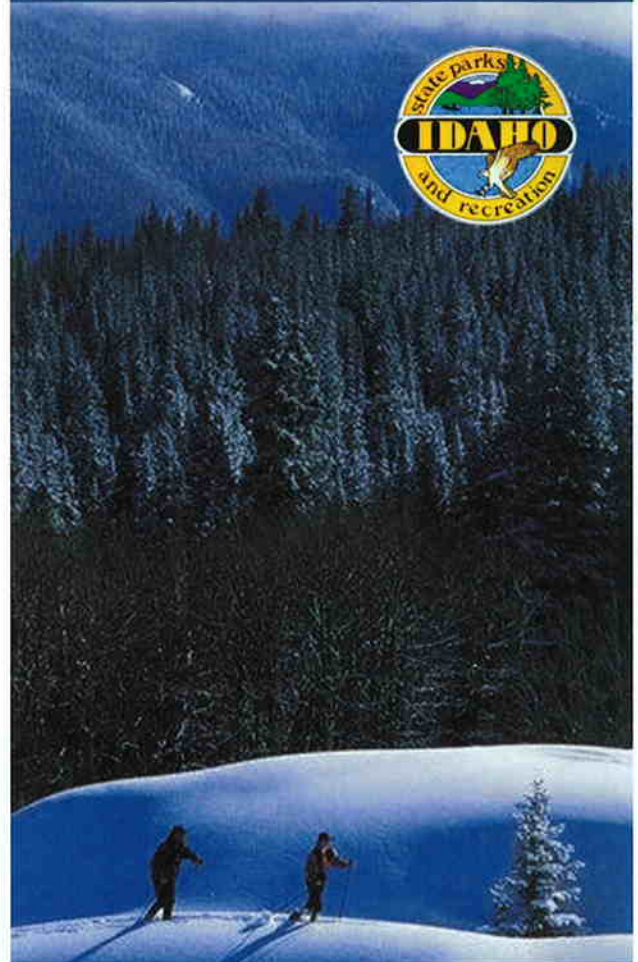


More detailed maps are available for download at: <http://parksandrecreation.idaho.gov/recreation/southernidahoparknski.aspx>

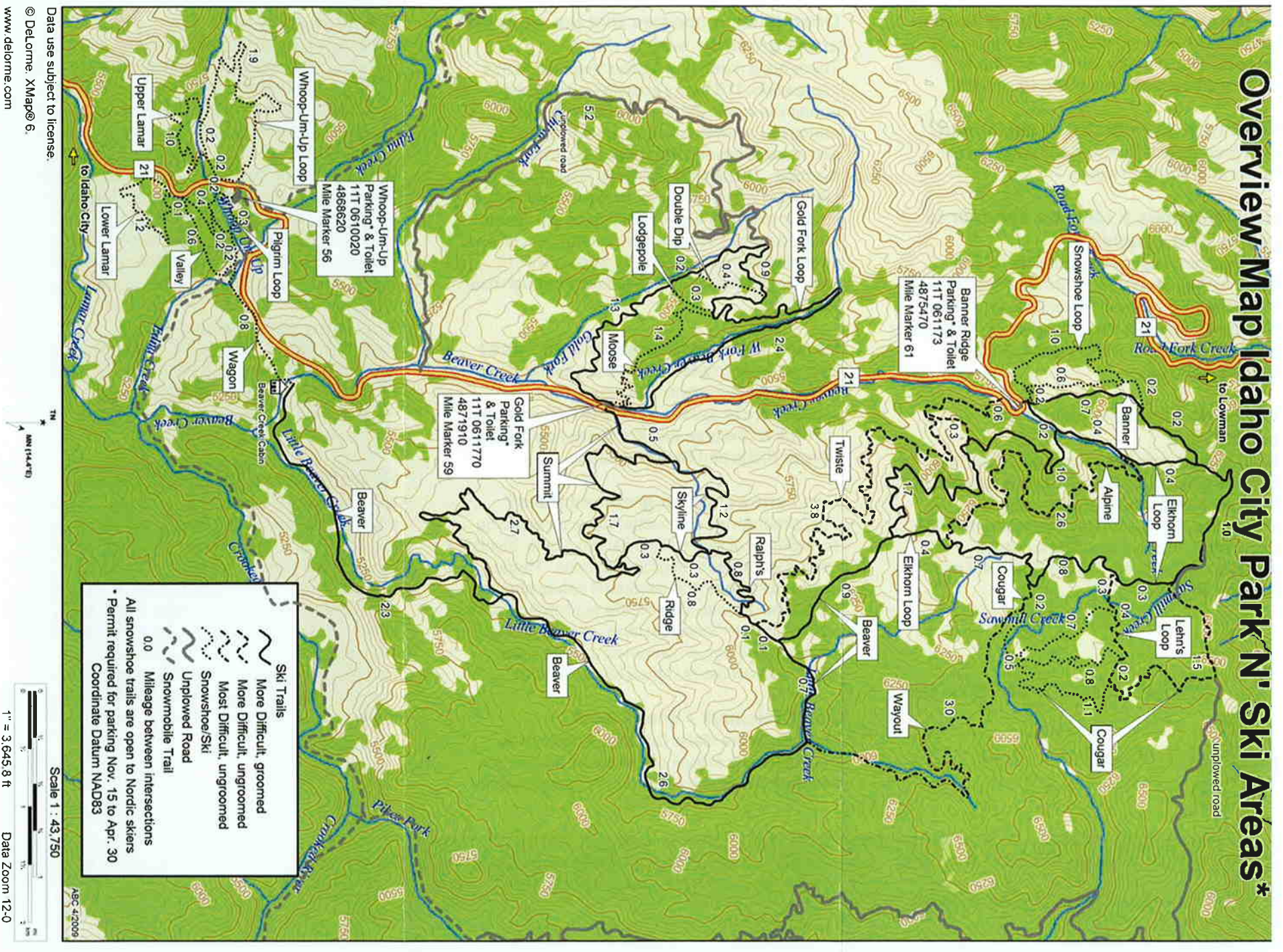
Data use subject to license.
© DeLorme, XMap® 6.
www.delorme.com

Park N' Ski

Idaho City Area - Map / FAQ's



www.parksandrecreation.idaho.gov



More detailed maps are available for download at: <http://parksandrecreation.idaho.gov/recreation/southernidahoparknski.aspx>

Data use subject to license.
© DeLorme, XMap® 6.
www.delorme.com