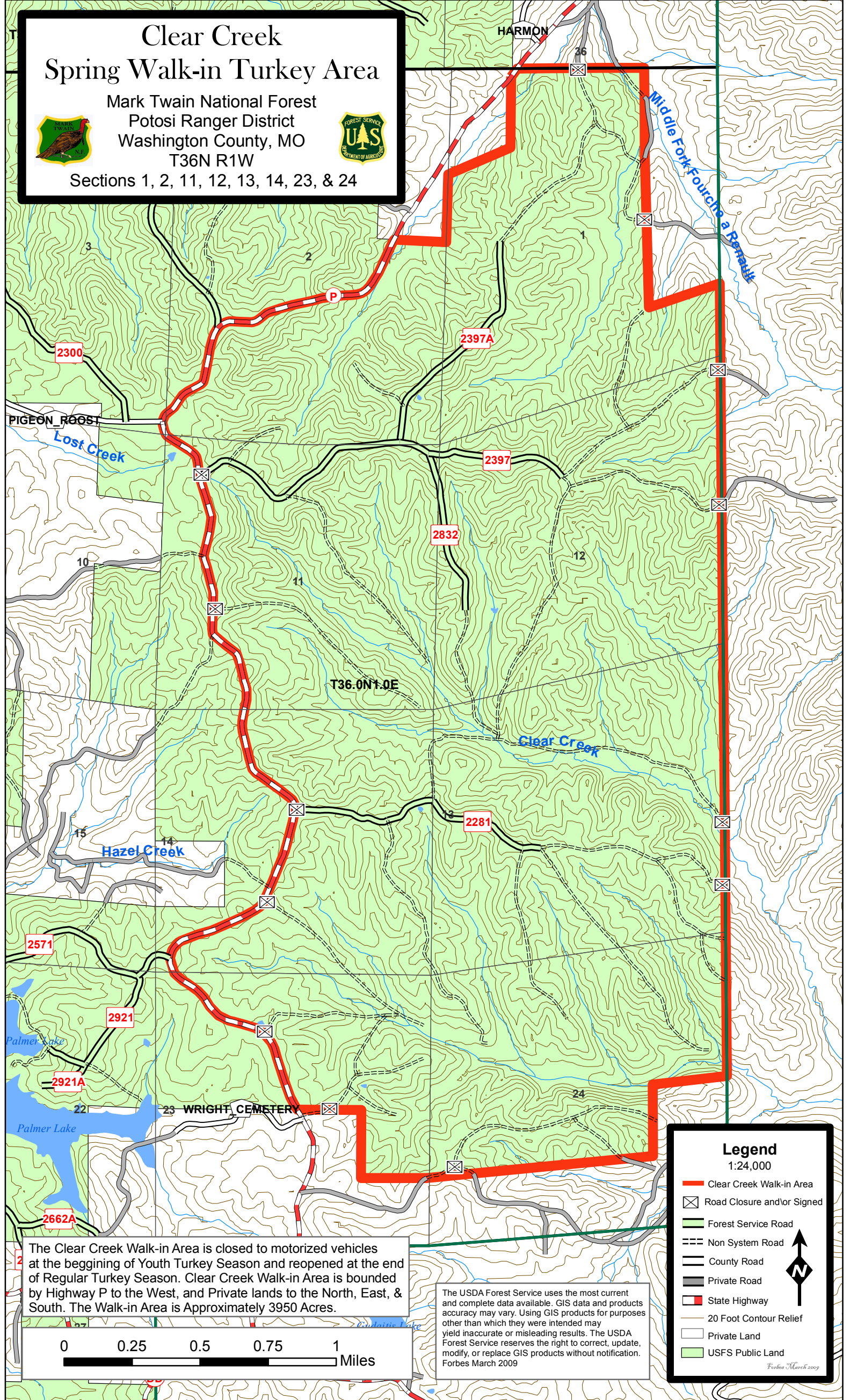


Clear Creek Spring Walk-in Turkey Area

Mark Twain National Forest
Potosi Ranger District
Washington County, MO
T36N R1W



Sections 1, 2, 11, 12, 13, 14, 23, & 24



The Clear Creek Walk-in Area is closed to motorized vehicles at the beginning of Youth Turkey Season and reopened at the end of Regular Turkey Season. Clear Creek Walk-in Area is bounded by Highway P to the West, and Private lands to the North, East, & South. The Walk-in Area is Approximately 3950 Acres.

The USDA Forest Service uses the most current and complete data available. GIS data and products accuracy may vary. Using GIS products for purposes other than which they were intended may yield inaccurate or misleading results. The USDA Forest Service reserves the right to correct, update, modify, or replace GIS products without notification. Forbes March 2009

Legend 1:24,000

- Clear Creek Walk-in Area
- Road Closure and/or Signed
- Forest Service Road
- Non System Road
- County Road
- Private Road
- State Highway
- 20 Foot Contour Relief
- Private Land
- USFS Public Land



Forbes March 2009