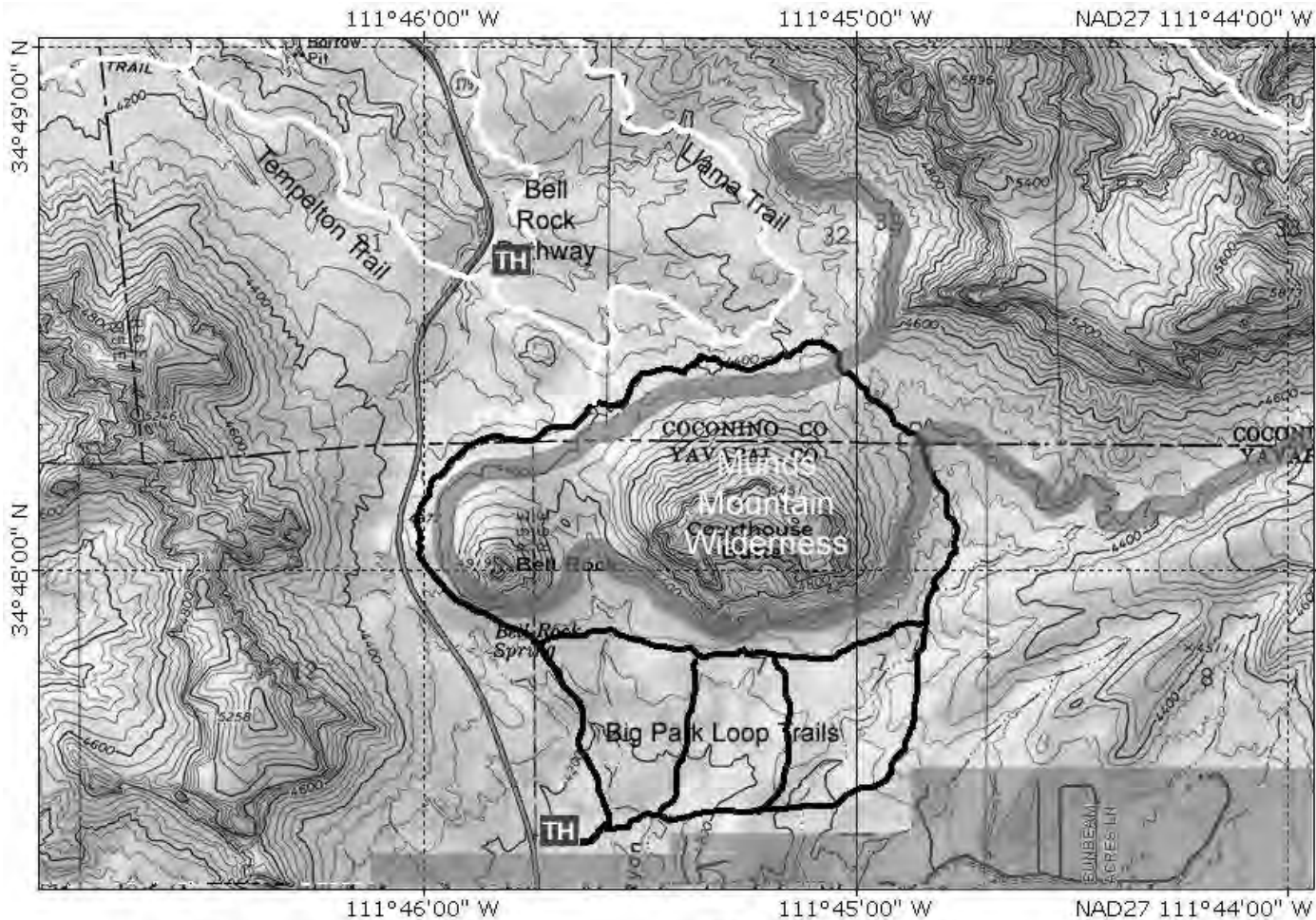


# Coconino National Forest Trail Guides - Court House Loop and Big Park Trails



**Length:** Courthouse Butte: 4.3 miles, Big Park: 1.0 miles (round trip)

**Rating:** Easy

**Use:** Hiking

**Season:** Year' round

**Hiking time:** Courthouse Butte: Allow 2.5 hours (round trip)

**Cumulative Elevation:** 350 ft.

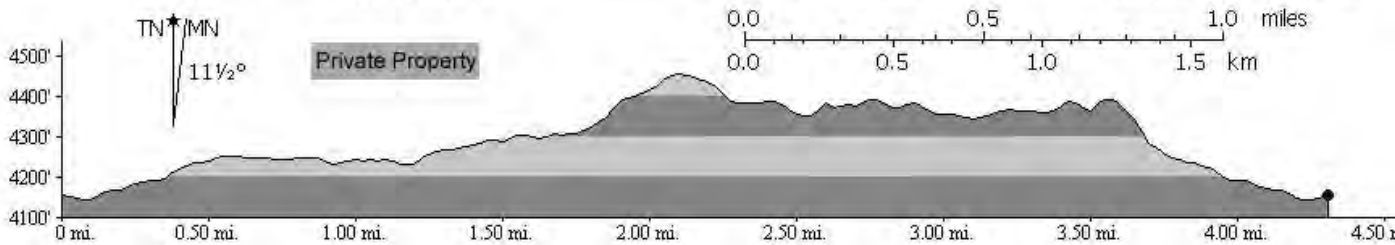
**USGS Maps:** Sedona and Munds Mountain.

**Location:** 38 miles south of Flagstaff in scenic Red Rock Country

**Notes:** A Red Rock Pass is required to park. Horses are prohibited on Bell Rock Pathway. Bicycles are prohibited in the Wilderness Area. Respect private property boundaries.

**For more information contact:**  
Red Rock Ranger District, P.O. Box 20429,  
Sedona AZ 86341, (928) 203-2900

**Courthouse Butte Loop:** To get to this wonderful trail, take the wide Bell Rock Pathway from the kiosk toward Bell Rock. It climbs gently and at ½ mile there is a signed intersection with the Courthouse Butte Loop Trail. Continue ahead on the wide trail (this description is for taking the loop clockwise). The trail continues a gentle climb circling to the left of Bell Rock. It levels out at 1 mile and curves to the right below the slopes of Bell Rock. Follow the large cairns to the 1½ mile point where the wide Pathway turns north (left) and a sign shows the Courthouse Butte Loop Trail branching to the right. Go right. This narrower trail passes to the left of Courthouse Butte heading toward Lee Mountain. At 2¼ miles, the trail passes to the right of a prominent dome-shaped outcrop, and then gradually descends, entering Wilderness.



It enters a dry wash at 3 miles, circles to the right over bare rock and climbs out onto level ground as it leaves the Wilderness area and continues to circle Courthouse Butte. Approaching Bell Rock, the trail meets the pathway once again at 3¾ miles. Go left, retracing the entry route for ½ mile to return to the kiosk. The loop is mostly unshaded and can be hot in summer. **Big Park Trail:** A short offshoot of the Courthouse Butte Loop trail, popular with bicycle enthusiasts. Park in the south Bell Rock Pathway parking area. Take trail east a short distance to the Big Park Trail

**Access:** From the junction of Routes 89A and 179 in Sedona, take 179 south 6.5 miles to a short roadway on the left marked for Bell Rock Vista, milepost 307.1.