



# Springs Valley Trail

Hoosier National Forest



FS-R9-050 - 10/2015

## Description

Length: 12.7 miles

Type: Hiking, mountain biking and horseback riding

Special Features: Scenic views of Springs Valley Lake and remnants of the Buffalo Trace.

## Etiquette and Rules

Horse riders and mountain bikers (age 17 years and older) are required to have a permit and stay on trails designated for that type of use. Permits are available from our offices and local vendors.

Observe the following trail courtesy:

- Mountain bikers yield to horse riders and hikers.
- Make your approach known in advance.
- Horse riders control your horse.
- Pack out your trash.

Motorized travel is not permitted.

## Safety

Use caution during hunting seasons. Blaze orange clothing is recommended during deer season (do not wear white).

Ticks and chiggers are common. Take necessary precautions including avoiding tall grass and thick brushy areas.

Loose limbs and hazard trees can fall on the trail at anytime, especially on windy days.

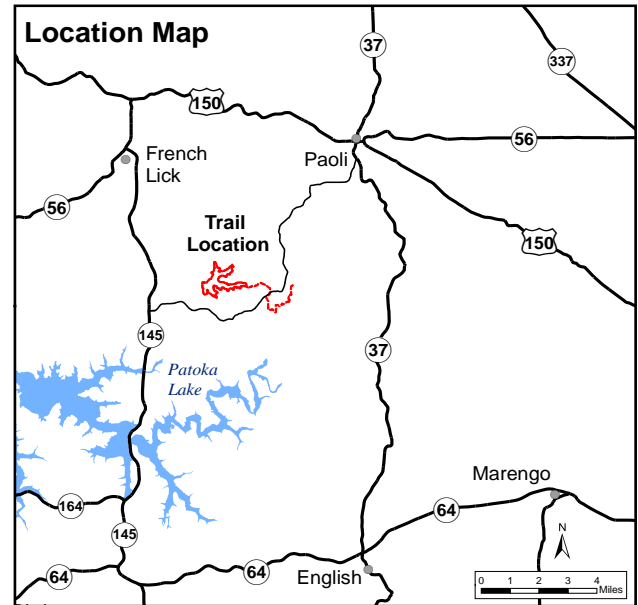
Map may contain errors, no guarantee is made to its accuracy.

## Emergencies

- Nearest public phone is in French Lick.
- Nearest hospital is located in Paoli, IN.
- Orange County Sheriff: (812) 723-2417 or 911
- Indiana Conservation Officers: (812) 837-9536

## Facilities

Parking is available at the trailhead. The Springs Valley Recreation Area is located on the north shore of the lake. Horses are not permitted in the campground. Picnic and restroom facilities are located near the recreation area and have hitching posts to allow use by all trail users.



## Directions

**From Hwy 145 in the French Lick area:** Take Hwy 145 south out of French Lick. Proceed 6.4 miles and turn left at the brown Forest Service sign on Baseline Liberty Road. Proceed 4.8 miles to the trailhead on your left.

**From Hwy 37 in the Paoli area:** Take Hwy 37 south of Paoli. Proceed approximately 1 mile and turn right on to Unionville Road at the highway sign for Springs Valley Recreation Area. Proceed 1 mile and turn right at a brown Forest Service sign onto County Road 150S. Proceed 1.1 miles to a stop sign and turn left onto County Road 225W. Proceed 2.1 miles to a brown Forest Service sign and bear left at the fork to County Road 325W. Continue 4.9 miles to the Springs Valley Trailhead on the right side of road.

GPS Coordinates for the Springs Valley Recreation Area: 38°28'41.217"N, 86°31'29.131"W

## For More Information

Hoosier National Forest  
248 15th Street  
Tell City, IN 47586  
(812) 547-7051  
Toll Free: 1-866-302-4173  
[www.fs.usda.gov/hoosier](http://www.fs.usda.gov/hoosier)

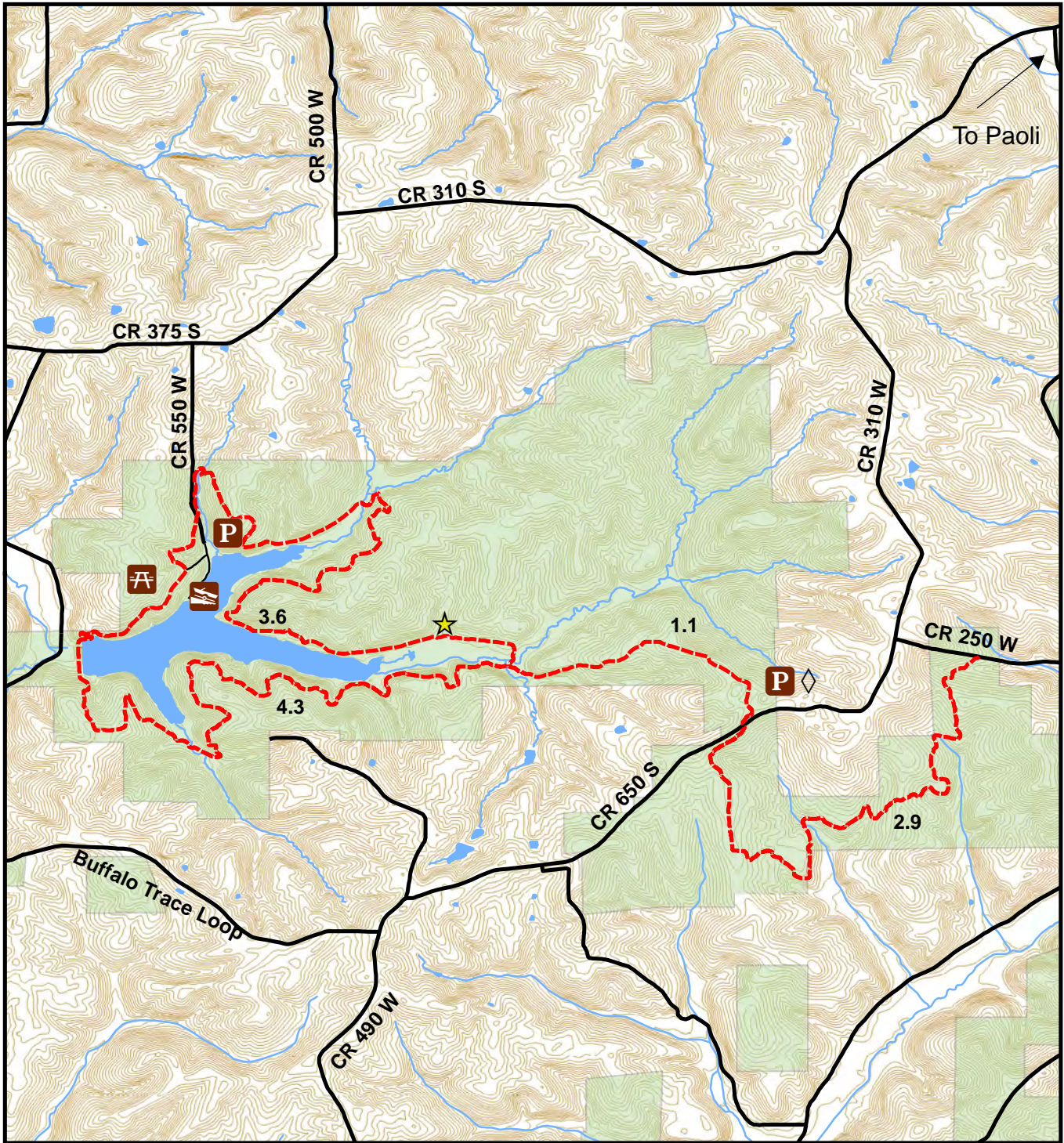
Federal Relay: 1-800-877-8339



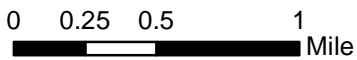
Forest Service



# Springs Valley Trail



Large Print Copies Available



engstrom 10/6/2015



## Legend

- Trail
- Road
- Stream
- 10' Contour
- Horse Trailer Parking
- Water
- Forest Service
- 0.2 Miles Between Intersections
- Parking
- Picnic and Toilet Facilities
- Boat Ramp
- Buffalo Trace