



Nebo Ridge Trail

Hoosier National Forest



FS-R9-048 - 10/2015

Description

Approximate Length: 8.6 miles

Type: Hiking, horse riding and mountain biking.

Special Features: Scenic views from ridgetop trail.

Etiquette and Rules

Horse riders and mountain bikers (age 17 years and older) are required to have a permit and stay on trails designated for that type of use. Permits are available from our offices and local vendors.

Observe the following trail courtesy:

- Mountain bikers yield to horse riders and hikers.
- Pack out your trash.

Motorized travel is not permitted.

Safety

This area has a high population of rattlesnakes. Wear high top leather boots and use caution around rocks and logs. Step on and off a log rather than over it. If you see or hear a rattlesnake back away. Rattlesnakes are protected by law and may not be harmed or collected.

Use caution during hunting seasons. Blaze orange clothing is recommended (not white) during deer season.

If a parking lot is not available, be sure your vehicle is well off the road. If you choose to use a road as part of your trip, be mindful of traffic.

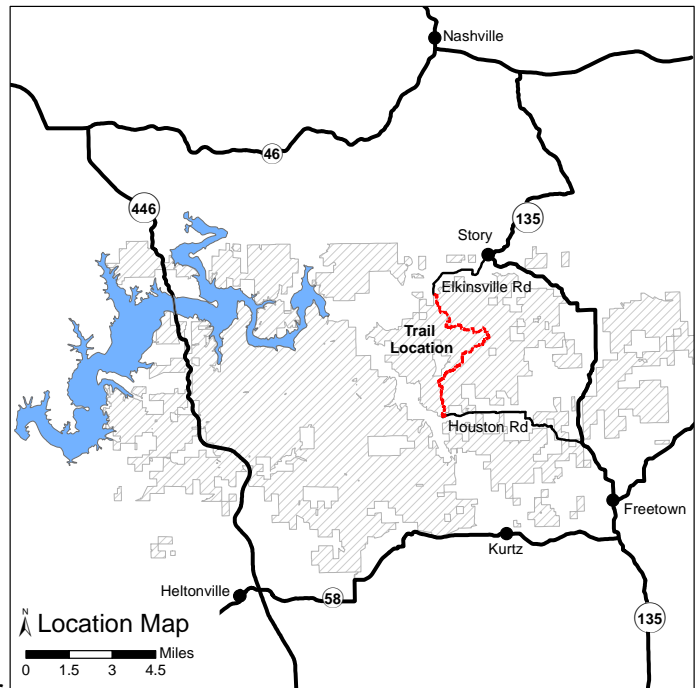
Ticks and chiggers are common; take precautions and avoid tall grass and thick brushy areas.

Loose limbs and hazard trees can fall on the trail at anytime, especially on windy days.

Map may contain errors, no guarantee is made to its accuracy.

Facilities

Parking is available at the north trailhead between Elkinsville and Story (see map). Parking is limited and space may not be available for trailers. Another small parking lot is at the south end of the trail.



Emergencies

- Nearest public phone is in Brown County State Park.
- Nearest hospital is located in Seymour, IN.
- Brown County Sheriff: 812-988-6655 or 911.
- Indiana Conservation Officers: 812-837-9536.

Directions to the North Parking Area

Go 9 miles south on IN 135 from the IN 46/IN 135 junction to the community of Story. Veer off SR 135 at the Story Inn (this is Elkinsville Road, but it is unmarked). Travel 2.7 miles, (you will pass a gravel road on your right). Take the left bend in the road and cross a bridge. Go 0.3 miles then turn left into the parking area. The parking area was funded with permit fees.

GPS Coordinates for the two Nebo trailheads: 39°4'46.103"N, 86°14'55.615"W and 39°1'6.266"N, 86°14'31.712"W

For Information

Hoosier National Forest
811 Constitution Avenue; Bedford, IN 47421
(812) 275-5987

Toll Free: 1-866-302-4173

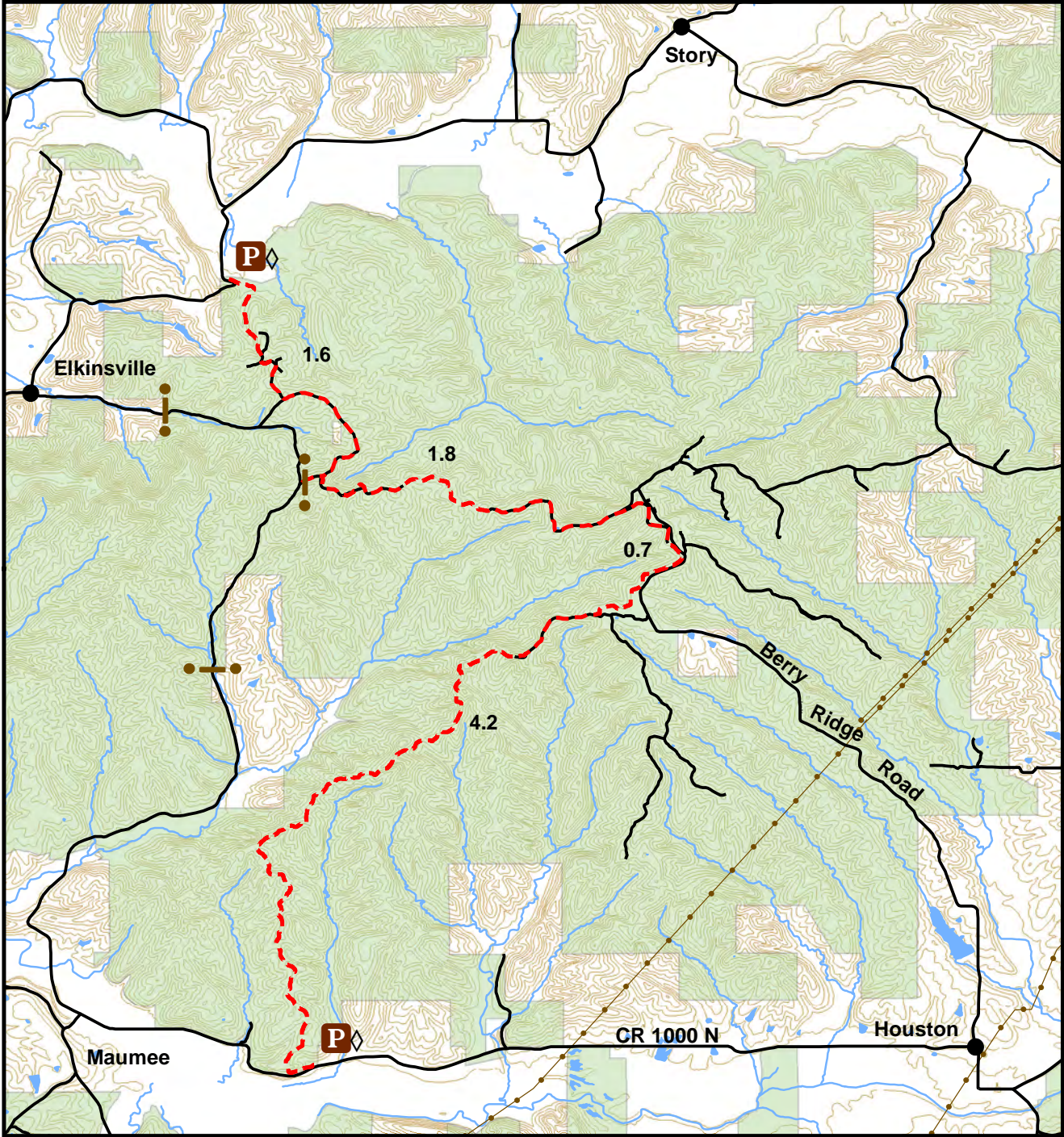
www.fs.usda.gov/hoosier

Federal Relay: 1-800-877-8339

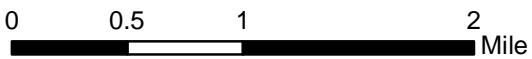


Forest Service

Nebo Ridge Trail



Large Print Copies Available



eengstrom 8/20/2015



Legend

- Trail
- Road
- Stream
- 20' Contour
- Pipeline
- Horse Trailer Parking
- Pond
- Forest Service
- 0.2 Miles Between Intersections
- Gate
- Parking

USDA is an equal opportunity provider, employer, and lender.