

Wasatch-Cache National Forest Land and Resource Management Plan

Amendment Number 5

Effective with the Decision for Wild and Scenic River Suitability Study for
National Forest System Lands in Utah, November 2008

POSTING NOTICE:

There are ten pages with this posting notice.

Page 4-15-a should be inserted before page 4-15,

Page 4-65-a should be inserted before page 4-65,

Page 4-123-a should be inserted before page 4-123,

Page 4-145-a should be inserted before page 4-145,

Page 4-159-a should be inserted before page 4-159,

Page 4-185-a should be inserted before page 4-185,

Page 4-197-a should be inserted before page 4-197,

Page VIII-1-a should be inserted before page VIII-1,

Page VIII-5-a should be inserted before page VIII-5.

Page IX-4-a should be inserted before page IX-4,

EXPLANATION:

The analysis is to substantiate the wild and scenic river suitability study analysis found in the EIS for the Wild and Scenic River Suitability Study for National Forest System Lands in Utah, November 2008.

This amendment is a non-significant amendment to the Wasatch-Cache Forest Plan that amends management direction completed for the eligible wild and scenic rivers in the Wasatch-Cache Forest Plan.

Wasatch-Cache Forest Plan

Amendment Number 5

Effective with the Decision for the Wild and Scenic River Suitability Study for National Forest System Lands in Utah, 2008.

Previous wording found in Forest Plan, Chapter 4, Page 4-15 for Eligible Wild and Scenic Rivers, Desired Condition is:

Desired Condition

River segments and their corridors that are eligible as Wild and Scenic Rivers are managed to retain their free-flowing status and outstandingly remarkable values.

Amended wording for Eligible Wild and Scenic Rivers, Desired Condition is:

Desired Condition

River segments and their corridors that are **suitable** as Wild and Scenic Rivers are managed to retain their free-flowing status and outstandingly remarkable values.

Effective with the Decision for the Wild and Scenic River Suitability Study for National Forest System Lands in Utah, 2008.

Previous wording found in Forest Plan, Chapter 4, Pages 4-65 to 66 for 2.0 – Special Management Areas, Management Emphasis is:

Management Emphasis

You Will See

- 2.1 2.3 Wild and Scenic Rivers:** Wild (2.1), Scenic (2.2), and Recreational (2.3) Rivers include land corridors that extend 1/4 mile from each bank. Rivers and their corridors found suitable as additions to the Wild and Scenic Rivers System are managed to protect their free-flowing waters and existing or potential outstandingly remarkable values. Wasatch-Cache National Forest Plan Revision did not include Suitability determination. These Prescription numbers will not be used until such time as suitability work is completed, however eligible segments must be managed according to standards included in Appendix VIII of this Revised Forest Plan.

Amended wording for 2.0 – Special Management Areas, Management Emphasis is:

Management Emphasis

You Will See

- 2.1 2.3 Wild and Scenic Rivers:** Wild (2.1), Scenic (2.2), and Recreational (2.3) Rivers include land corridors that extend 1/4 mile from each bank. Rivers and their corridors found suitable as additions to the Wild and Scenic Rivers System are managed to protect their free-flowing waters and existing or potential outstandingly remarkable values. Wasatch-Cache National Forest Plan Revision did not include Suitability determination. [The Forest has determined suitability in the Wild and Scenic River Suitability Study for National Forest System Lands in Utah Final Environmental Impact Statement and Record of Decision. The free-flowing character and identified outstandingly remarkable values for suitable rivers will be protected.](#) Suitable segments must be managed according to standards included in Appendix VIII of this Revised Forest Plan.

Effective with the Decision for the Wild and Scenic River Suitability Study for National Forest System Lands in Utah, 2008.

Previous wording found in Forest Plan, Chapter 4, Bear Management Area, Page 4-123 for Eligible Wild and Scenic Rivers Desired Future Conditions is:

Eligible Wild and Scenic Rivers Desired Future Conditions:

High Creek (High Creek Lake to Forest boundary for ecological values) will be managed to protect values which made this segment eligible in the inventory. Activities within the corridor will maintain a “Wild” classification.

The Lefthand Fork Blacksmith’s Fork (source to mouth for scenic values), Logan River (Confluence with Beaver Creek to bridge at Guinavah-Malibu Campground for scenic, recreation, geologic, hydrologic, fishery and ecological values), and Beaver Creek (South Boundary of State land to Mouth for fishery values) will be managed to protect values which made them eligible in the inventory. Activities within the corridors will maintain a “Recreational” classification.

The Logan River (Idaho state line to confluence with Beaver Creek for fishery values), White Pine Creek, Temple Fork, Spawn Creek, and Bunchgrass Creek (all source to mouth for fishery values), and Little Bear Creek (Little Bear Spring to Mouth for fishery values) will be managed to protect values that made them eligible in the inventory. Activities within the corridors will maintain a “Scenic” classification.

Amended wording for Eligible Wild and Scenic Rivers Desired Future Conditions is:

Eligible Wild and Scenic Rivers Desired Future Conditions:

The following river segments are not recommended for inclusion in the National Wild and Scenic Rivers System: High Creek: High Creek Lake to Forest boundary; Lefthand Fork Blacksmith’s Fork: source to mouth; Logan River: Confluence with Beaver Creek to bridge at Guinavah-Malibu Campground; Beaver Creek: South Boundary of State land to Mouth; Logan River: Idaho state line to confluence with Beaver Creek; White Pine Creek: source to mouth; Temple Fork: source to mouth; Spawn Creek: source to mouth; Bunchgrass Creek: source to mouth; and Little Bear Creek: Little Bear Spring to Mouth. These river segments are no longer afforded agency protection as potential wild and scenic rivers.

[Remove the map of Eligible Wild and Scenic Rivers – Cache-Box Elder Management Area.](#)

Effective with the Decision for the Wild and Scenic River Suitability Study for National Forest System Lands in Utah, 2008.

Previous wording found in Forest Plan, Chapter 4, North Wasatch Ogden Valley Management Area, Pages 4-145 to 4-146 for Eligible Wild and Scenic Rivers Desired Future Conditions is:

Eligible Wild and Scenic Rivers Desired Future Conditions:

The Left Fork South Fork Ogden River (Frost Canyon/Bear Canyon confluence to Causey Reservoir for scenery values) will be managed to protect the values that made it eligible in the inventory. Activities within the corridor will maintain a “Wild” classification.

Willard Creek (source to Forest boundary for scenery and wildlife values) will be managed to protect values that made it eligible in the inventory. Activities within the corridor will maintain a “Scenic” classification.

Amended wording for Eligible Wild and Scenic Rivers Desired Future Conditions is:

Eligible Wild and Scenic Rivers Desired Future Conditions:

The following river segments are not recommended for inclusion in the National Wild and Scenic Rivers System: Left Fork South Fork Ogden River: Frost Canyon/Bear Canyon confluence to Causey Reservoir and Willard Creek: source to Forest boundary. These river segments are no longer afforded agency protection as potential wild and scenic rivers.

Remove the map of Eligible Wild and Scenic Rivers – North Wasatch - Ogden Valley Management Area.

Effective with the Decision for the Wild and Scenic River Suitability Study for National Forest System Lands in Utah, 2008.

Previous wording found in Forest Plan, Chapter 4, Central Wasatch Management Area, Pages 4-159 for Eligible Wild and Scenic Rivers Desired Future Conditions is:

Eligible Wild and Scenic Rivers Desired Future Conditions:

Red Butte Creek (source to Red Butte Reservoir for ecological values) will be managed to protect the values that made it eligible in the inventory. Activities within the corridor will maintain a “Scenic” classification.

Little Cottonwood Creek (source to the Murray City Diversion for scenery, geology/hydrology, and ecological values) will be managed to protect the values that made it eligible in the inventory. Activities within the corridor will maintain a “Recreational” classification.

Amended wording for Eligible Wild and Scenic Rivers Desired Future Conditions is:

Eligible Wild and Scenic Rivers Desired Future Conditions:

The following river segments are not recommended for inclusion in the National Wild and Scenic Rivers System: Red Butte Creek: source to Red Butte Reservoir and Little Cottonwood Creek: source to the Murray City Diversion. These river segments are no longer afforded agency protection as potential wild and scenic rivers.

[Remove the map of Eligible Wild and Scenic Rivers – Central Wasatch Management Area.](#)

Effective with the Decision for the Wild and Scenic River Suitability Study for National Forest System Lands in Utah, 2008.

Previous wording found in Forest Plan, Chapter 4, Western Uintas Management Area, Pages 4-185 to 4-186 for Eligible Wild and Scenic Rivers Desired Future Conditions is:

Eligible Wild and Scenic Rivers Desired Future Conditions:

The Ostler Fork (source to mouth for ecological values), Left Hand, Right Hand, and East Forks Bear River (Alsop Lake and Norice Lake to near trailhead for scenic and hydrologic values), Boundary Creek (source to confluence with East Fork Bear for ecological values), and Middle Fork Weber River (source to confluence with Weber River for scenic values) will be managed to protect values which made them eligible in the inventory. Activities within the corridors will maintain a “Wild” classification.

The Hayden Fork (source to mouth for scenic and ecological values), Beaver Creek (source to forest boundary for recreation values), and Provo River (Trial Lake to U35 Bridge for scenic and recreational values) will be managed to protect values which made them eligible in the inventory. Activities within the corridors will maintain a “Recreational” classification.

The Stillwater Fork (source to mouth for scenic and ecological values) will be managed to protect values that made it eligible in the inventory. Activities within the corridor will maintain a “Wild” classification within Wilderness and “Scenic” classification below Wilderness.

Amended wording for Eligible Wild and Scenic Rivers Desired Future Conditions is:

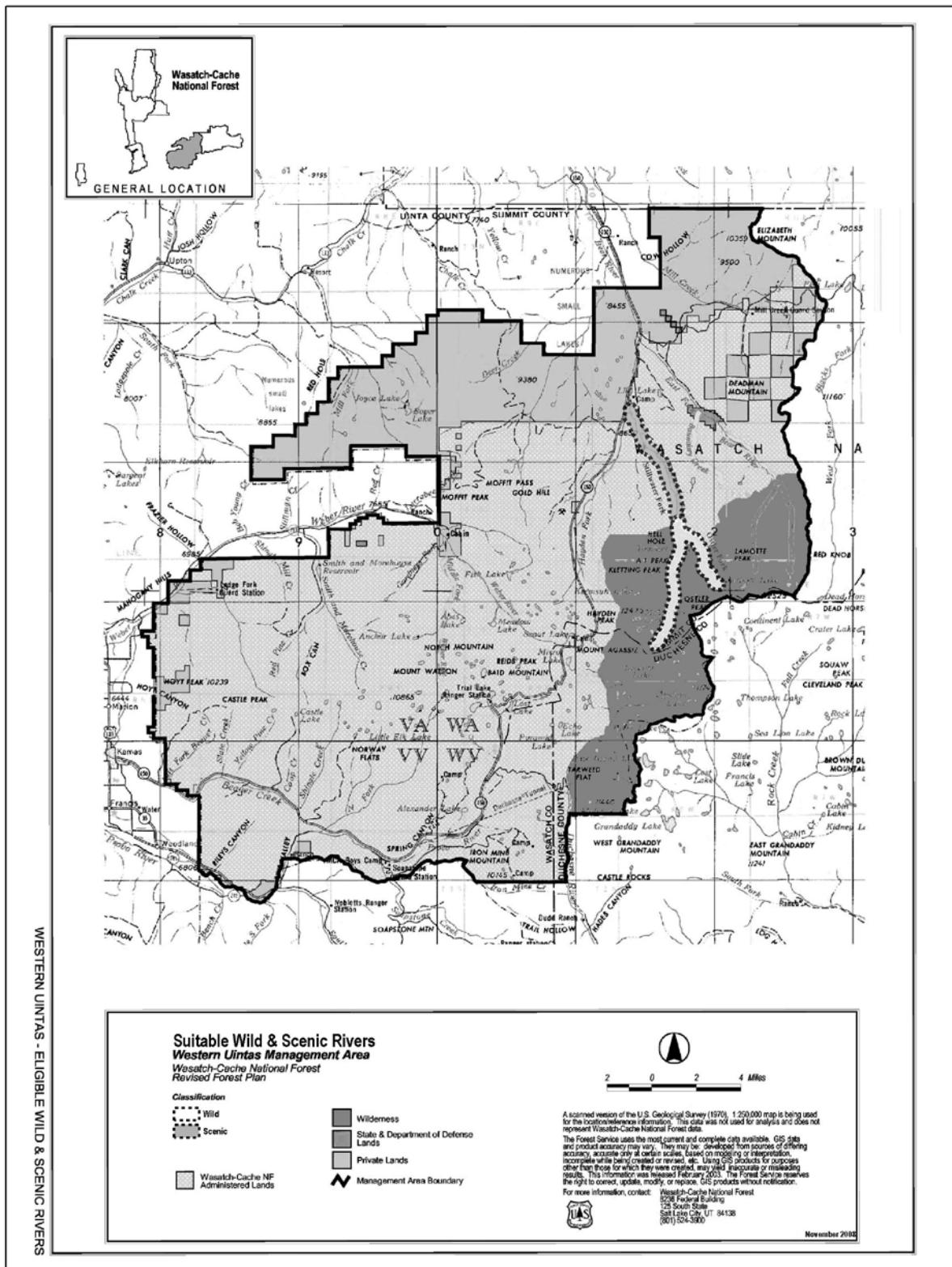
Eligible Wild and Scenic Rivers Desired Future Conditions:

The Ostler Fork (source to mouth for ecological values), will be managed to protect values which made it [suitable \(Wild and Scenic River Suitability Study for National Forest System Lands in Utah FEIS and ROD\)](#). Activities within the corridors will maintain a “Wild” classification.

[The following river segments are not recommended for inclusion in the National Wild and Scenic Rivers System: Left Hand, Right Hand, and East Forks Bear River: Alsop Lake and Norice Lake to near trailhead; Boundary Creek: source to confluence with East Fork Bear; Middle Fork Weber River: source to confluence with Weber River; Hayden Fork: source to mouth; Beaver Creek: source to forest boundary; and Provo River: Trial Lake to U35 Bridge. These river segments are no longer afforded agency protection as potential wild and scenic rivers.](#)

The Stillwater Fork (source to mouth for scenic and ecological values) will be managed to protect values that made it [suitable](#). Activities within the corridor will maintain a “Wild” classification within Wilderness and “Scenic” classification below Wilderness.

Replace the map of Eligible Wild and Scenic Rivers – Western Uintas Management Area with the following:



Effective with the Decision for the Wild and Scenic River Suitability Study for National Forest System Lands in Utah, 2008.

Previous wording found in Forest Plan, Chapter 4, Eastern Uintas Management Area, Pages 4-197 to 4-198 for Eligible Wild and Scenic Rivers Desired Future Conditions is:

Eligible Wild and Scenic Rivers Desired Future Conditions:

The Henry's Fork (Henrys Fork Lake to trailhead for scenic, recreational, wildlife and ecological values), East Fork Blacks Fork (headwaters to confluence with Little East Fork for ecological values), Little East Fork (Source to mouth for ecological values), and East Fork Smiths Fork (Red Castle Lake to trailhead for scenic, recreational, wildlife and ecological values) will be managed to protect values which made them eligible in the inventory. Activities within the corridor will maintain a "Wild" classification.

The West Fork Beaver Creek (source to Forest boundary for wildlife and ecological values), Middle Fork Beaver Creek (Beaver Lake to mouth for wildlife and ecological values), and West Fork Blacks Fork (source to trailhead for scenic and ecological values) will be managed to protect values which made them eligible in the inventory. Activities within the corridor will maintain a "Wild" within Wilderness and "Scenic" below Wilderness classification.

The Blacks Fork (confluence West Fork and East Fork to Meeks Cabin Reservoir for historic values) will be managed to protect values which made it eligible in the inventory. Activities within the corridor will maintain a "Recreational" classification.

The West Fork Smiths Fork (source to Forest boundary for historic values) will be managed to protect values which made it eligible in the inventory. Activities within the corridor will maintain a "Scenic" classification.

Amended wording for Eligible Wild and Scenic Rivers Desired Future Conditions is:

Eligible Wild and Scenic Rivers Desired Future Conditions:

The following river segments are not recommended for inclusion in the National Wild and Scenic Rivers System: Henry's Fork: Henrys Fork Lake to trailhead; East Fork Blacks Fork: headwaters to confluence with Little East Fork; Little East Fork: Source to mouth; East Fork Smiths Fork: Red Castle Lake to trailhead; West Fork Beaver Creek: source to Forest boundary; Middle Fork Beaver Creek: Beaver Lake to mouth; West Fork Blacks Fork: source to trailhead; Blacks Fork: confluence West Fork and East Fork to Meeks Cabin Reservoir; and West Fork Smiths Fork: source to Forest boundary. These river segments are no longer afforded agency protection as potential wild and scenic rivers.

[Remove the map of Eligible Wild and Scenic Rivers – Eastern Uintas Management Area](#)

Effective with the Decision for the Wild and Scenic River Suitability Study for National Forest System Lands in Utah, 2008.

Previous wording found in Forest Plan, Appendix IX, Page IX-4 for Stipulations for Oil and Gas Leasing is:

RESOURCE: Eligible Wild and Scenic River Corridor

Stipulation: Controlled Surface Use – proposed activities would be required to protect identified outstandingly remarkable value(s) until such time the Suitability is determined.

Objective: To maintain identified outstandingly remarkable value(s)

Amended wording for Stipulations for Oil and Gas Leasing is:

RESOURCE: **Suitable** Wild and Scenic River Corridor

Stipulation: Controlled Surface Use – proposed activities would be required to protect identified outstandingly remarkable value(s) **and free-flowing character**.

Objective: To maintain identified outstandingly remarkable value(s) **and free-flowing character**.

Effective with the Decision for the Wild and Scenic River Suitability Study for National Forest System Lands in Utah, 2008.

Previous wording found in Forest Plan, Appendix VII, Page VII-1 for Appendix VIII - Protection Standards for Eligible Wild & Scenic River Segments is:

***Appendix VIII
Protection Standards for Eligible
Wild & Scenic River Segments***

The following interim management direction for study rivers found eligible for the Wild and Scenic Rivers System is provided in Chapter 8 of Forest Service Handbook 1909.12. These guidelines should be applied to the extent of the Forest Service's jurisdiction over Federal lands, Federal scenic or access easements, and other interests. They do not apply to privately owned lands. These guidelines are to be used in conjunction with the USDA-USDI Interagency Guidelines (Vol. 47 No. 173, Fed. Reg. 9/7/82). The protection requirements must be documented in the forest plan and continued until a decision is made as to the future use of the river and adjacent lands.

A list of the eligible river segments requiring interim protection is included at the end of this appendix. The Forest Service is required to protect identified values and free flowing character until a suitability study determines whether a river is suitable or not. Suitable rivers are protected until designated by Congress, or otherwise directed by other legal means.

Amended wording for Appendix VIII - Protection Standards for Eligible Wild & Scenic River Segments is:

***Appendix VIII
Protection Standards for [Suitable](#)
Wild & Scenic River Segments***

The following interim management direction for study rivers found [suitable](#) for the Wild and Scenic Rivers System is provided in Chapter 8 of Forest Service Handbook 1909.12. These guidelines should be applied to the extent of the Forest Service's jurisdiction over Federal lands, Federal scenic or access easements, and other interests. They do not apply to privately owned lands. These guidelines are to be used in conjunction with the USDA-USDI Interagency Guidelines (Vol. 47 No. 173, Fed. Reg. 9/7/82). The protection requirements must be documented in the forest plan and continued until a decision is made as to the future use of the river and adjacent lands.

A list of the [suitable](#) river segments requiring interim protection is included at the end of this appendix. The Forest Service is required to protect identified values and free flowing character. Suitable rivers are protected until designated by Congress, or otherwise directed by other legal means.

Effective with the Decision for the Wild and Scenic River Suitability Study for National Forest System Lands in Utah, 2008.

Previous wording found in Forest Plan, Appendix VII, Pages VII-5 to VII-6 for Appendix VIII - Protection Standards for Eligible Wild & Scenic River Segments is:

**Names, Classification and Outstanding Values of Eligible River Segments
Requiring Interim Protection**

| Wasatch-Cache National Forest Eligible Wild & Scenic Rivers | | | |
|--|--|---|--|
| | River Name and Eligible Segment | Classification | Outstanding Values |
| 1 | Henry's Fork: Henry's Fork Lake to Trailhead | Wild | Scenery Recreation Wildlife Ecology |
| 2 | West Fork Beaver Creek: Source to Forest Boundary | Wild within Wilderness Scenic below Wilderness | Wildlife Ecology |
| 3 | Middle Fork Beaver Creek: Beaver Lake to Confluence with East Fork Beaver Creek | Wild within Wilderness Scenic below Wilderness | Wildlife Ecology |
| 4 | Thompson Creek: Source to Hoop Lake Diversion | Wild | Wildlife |
| 5 | West Fork Blacks Fork: Source to trailhead Scenery | Wild within Wilderness Scenic below Wilderness | Ecology |
| 6 | East Fork Blacks Fork: Headwaters to confluence with Little East Fork | Wild | Ecology |
| 7 | Little East Fork: Source to Mouth | Wild | Ecology |
| 8 | Blacks Fork: Confluence of West Fork and East Fork to Meeks Cabin Reservoir | Recreational | History |
| 9 | West Fork Smiths Fork: Source to Forest boundary | Scenic | History |
| 10 | East Fork Smiths Fork: Red Castle Lake to trailhead | Wild | Scenery Recreation Wildlife Ecology |
| 11 | Hayden Fork: Source to Mouth | Recreational | Scenery Ecology |
| 12 | Stillwater Fork: Source to Mouth | Wild within Wilderness Scenic below Wilderness | Scenery Ecology |
| 13 | Ostler Fork: Source to Mouth | Wild | Ecology |
| 14 | Left, Right, and East Forks Bear River: Alsop Lk and Norice Lk to near Trailhead | Wild | Scenery Geology/hydrology Ecology |
| 15 | Boundary Creek: Source to confluence with East Fork Bear | Wild | Ecology |
| 16 | High Creek: High Creek Lake to Forest Boundary | Wild | Ecology |
| 17 | Lefthand Fork Blacksmiths Fork: Source to | Recreational | Scenery |

Revised Forest Plan – Forest Plan Amendment 5

| | | | |
|----|---|--------------|---|
| | Mouth | | |
| 18 | Logan River: Idaho state line to confluence with Beaver Creek | Scenic | Fish |
| 19 | Logan River: Confluence with Beaver Creek to Bridge at Guinavah-Malibu Campground | Recreational | Scenery Recreation Geology/hydrology Fish Ecology |
| 20 | Beaver Creek: South Boundary of State Land to Mouth | Recreational | Fish |
| 21 | White Pine Creek: Source to Mouth | Scenic | Fish |
| 22 | Temple Fork: Source to Mouth | Scenic | Fish |
| 23 | Spawn Creek: Source to Mouth | Scenic | Fish |
| 24 | Bunchgrass Creek: Source to Mouth | Scenic | Fish |
| 25 | Little Bear Creek: Little Bear Spring to Mouth | Scenic | Fish |
| 26 | Main Fork Weber River: Source to Forest Boundary | Scenic | Scenery |
| 27 | Middle Fork Weber River: Source to Forest Boundary | Wild | Scenery |
| 28 | Beaver Creek: Source to Forest boundary | Recreational | Recreation |
| 29 | Provo River: Trial Lake to U35 Bridge | Recreational | Scenery Recreation |
| 30 | Left Fork South Fork Ogden River: Frost Canyon/Bear Canyon Confluence to Causey | Wild | Scenery |
| 31 | Willard Creek: Source to Forest boundary | Scenic | Scenery Wildlife |
| 32 | Red Butte Creek: Source to Red Butte Reservoir | Scenic | Ecological |
| 33 | Little Cottonwood Creek: Source to Murray City Diversion | Recreational | Scenery Geology/hydrology Ecology |

Amended wording for Appendix VIII - Protection Standards for Eligible Wild & Scenic River Segments is:

Names, Classification and Outstanding Values of **Suitable** River Segments Requiring Interim Protection

| Wasatch-Cache National Forest Suitable Wild & Scenic Rivers | | | |
|--|--|---|--------------------|
| | River Name and Suitable Segment | Classification | Outstanding Values |
| 1 | Stillwater Fork: Source to Mouth | Wild within Wilderness Scenic below Wilderness | Scenery Ecology |
| 2 | Ostler Fork: Source to Mouth | Wild | Ecology |