

MANAGEMENT EMPHASIS BY MANAGEMENT AREA FOR EACH ALTERNATIVE

	7	8	9	10	11	12	13	14	15	16	17	18	19	20	21	22	23	24	25
7	3	5	91% 1	3	3	3	3	6	91% 1	69% 3									
8	62% 2	18% 5	91% 6	35% 2	82% 2	12% 1	35% 5	82% 4	91% 6	31% 6									
9			65% 6		18% 6	82% 6	65% 6	18% 6	65% 6	18% 6									
10	2	1	4	2	1	2	2	2	10% 1	1	4	2							
11	2	1	90% 6	2	1	2	2	2	90% 6	90% 6	1	2							
12			19% 2			19% 2			19% 2	19% 2									
13	2	5	81% 6	2	2	2	2	2	81% 6	81% 6	4	2							
14	23% 2	77% 6	83% 6	4	77% 6	24% 1	24% 2	24% 2	17% 1	26% 1	24% 4								
15			83% 6			83% 6			83% 6	83% 6									
16	2	5	78% 1	2	4	2	2	2	22% 1	78% 6	4	2							
17	2	1	1	2	1	1	2	2	30% 1	77% 1	1	2							
18						24% 1			70% 6	23% 6									
19	2	1	4	2	3	2	2	2	9% 1	9% 2	4	2							
20	24% 2	72% 6	28% 1	2	2	1	2	2	91% 6	91% 6	1	2							
21			49% 4						37% 4	37% 4									
22	2	3	51% 6	2	5	2	2	2	63% 6	63% 6	4	2							
23			47% 1						13% 1	47% 5									
24	2	5	53% 6	2	2	2	2	2	87% 6	53% 6	1	2							

Management Emphasis Key

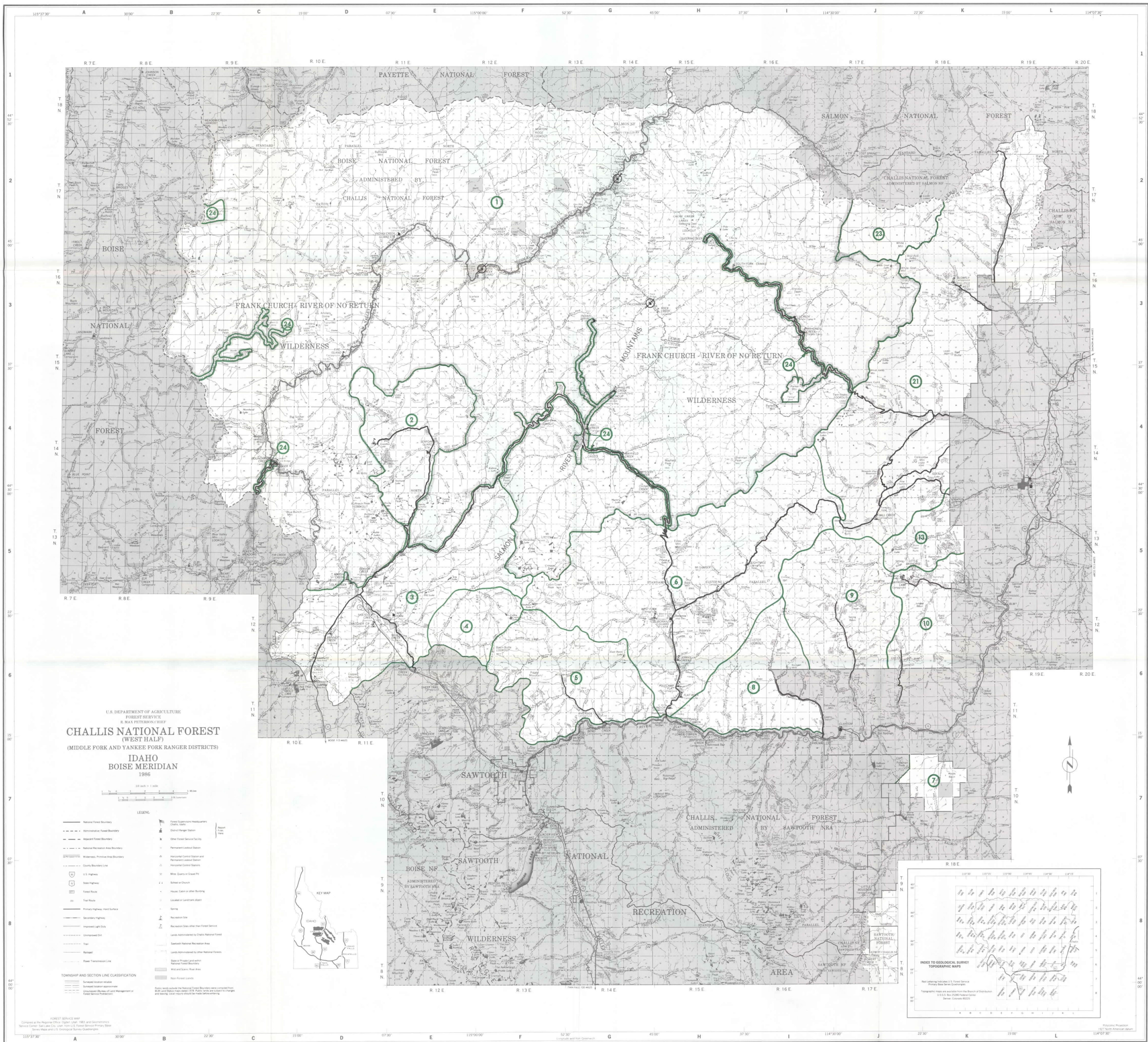
- Minimum Level Management**
Non-intensive timber management on a few management areas to meet local demand. Fish & wildlife will benefit from low negative impacts. Range conditions would improve slowly. Grazing capacity would be maintained. Only legal requirements of minerals will be met. Dispersed recreation would be emphasized. Low level maintenance of developed campgrounds. No soil or watershed projects.
- Moderate Range - Maintenance Other Resources**
Intensive and non-intensive timber management on a few management areas to meet local demand. Fish and wildlife habitat would improve. Range condition would improve, allowing for small increases in AUMS. Provides for a moderate level of minerals management. Dispersed recreation would be emphasized. Developed recreation sites will be maintained. Soil, watershed and water quality will be maintained.
- Moderate Range - Wildlife and Recreation/Maintenance of Other Resources**
Intensive and non-intensive timber management to meet local demand. Emphasis on improving wildlife and fish habitat. Range conditions would improve allowing for small increases in AUMS. Dispersed recreation will be emphasized. There will be a high level of maintenance and improvements on developed recreation sites and trails. Soil and watershed projects would correct existing problems.
- (Non-Commodity Emphasis) High Wildlife and Recreation Emphasis - Moderate Range Emphasis with Maintenance of Other Resources**
Intensive and non-intensive timber management to meet local demand. Silvicultural prescriptions will be to enhance wildlife and fish habitat. High priority for fish and wildlife improvements. Range management and AUMS maintained or adjusted to meet wildlife and recreation needs. Increased mitigation on mineral activity. Both dispersed and developed recreation activity would be emphasized. Developed recreation sites and trails would be upgraded. Soil and watershed projects would correct existing problems.
- (Commodity Emphasis) High Timber, Range, Developed Recreation and Minerals - Maintenance of Other Resources**
Suitable timber stands that can be harvested economically will be scheduled for intensive management. Fish and wildlife habitat would improve. High investment in range improvements to generate increases in AUMS. Developed recreation emphasized and new facilities constructed. Soil watersheds and water quality would be maintained.
- Proposed Wilderness**
Area proposed for wilderness. Managed to protect wilderness values until wilderness is established by congress.

LEGEND

- FOREST BOUNDARY
- MANAGEMENT AREA BOUNDARY
- MANAGEMENT AREA NUMBER
- WILDERNESS AREA BOUNDARY
- EXISTING DEVELOPED RECREATION SITE
- EXISTING DEVELOPED ADMINISTRATIVE SITE
- EXISTING ADMINISTRATIVE SITE (TO BE CLOSED)
- EXISTING ARTERIAL & COLLECTOR ROADS

CHALLIS NATIONAL FOREST LAND & RESOURCE MANAGEMENT PLAN ALTERNATIVES MAP

23



MANAGEMENT EMPHASIS BY MANAGEMENT AREA FOR EACH ALTERNATIVE										
ALTERNATIVES										
No Action (Current Program)	Market Engines	Non-Market Engines	SW 1980 Program	Market and Non-Market Sw	Domestic 2014 Budget	Current Program, Constrained Budget	Revenue Withdrawn Assessing Activity	High Wilderness Conducts Temples	Current Program, Unconstrained Budget	1980 SW Modified (predicted)
1	6	6	6	6	6	6	6	6	6	6
2	3	3	1	3	3	1	2	1	3	3
3	2	5	4	2	4	2	2	5	5	2
4	2	1	4	2	4	2	2	11%	5	2
5	2	3	4	2	2	2	2	89%	4	2
6	2	2	2	2	4	2	2	89%	5	2
7	3	5	9% 1 91% 6	3	3	3	3	6	9% 1 91% 6	69% 3 31% 6
8	2	2	1	2	2	1	2	16% 1 84% 6	1	1
9	2	2	4	3	2	1	2	30% 1 70% 6	1	1
10	2	5	1	3	4	1	2	48% 1 52% 6	5	1
3	2	1	4	2	4	2	2	62% 4 38% 6	1	4
1	2	5	4	3	5	3	2	28% 4 72% 6	32% 2 68% 6	4
3	2	5	4	2	1	2	2	6	6	4
4	3	3	1	3	3	1	3	1	3	1

Management Emphasis Key	
<p>1. Minimum Level Management Non-intensive timber management on a few management areas to meet local demand. Fish & wildlife will benefit from few harvests. Range management will improve slowly. Grazing capacity would be maintained. Only legal requirements of minerals will be met. Dispersed recreation would be emphasized. Development of developed campgrounds. No soil or watershed projects.</p>	<p>4. (Non-Commodity Emphasis) High Wildlife and Recreation Emphasis - Moderate Range Emphasis with Maintenance of Other Resources Intensive and non-intensive timber management to meet local demand. Silvicultural prescriptions will be to enhance wildlife and fish habitat. High priority for fish and wildlife in management. Range management at AUMS maintained or adjusted to meet wildlife and recreation needs. Increased mitigation on mineral activity. Both dispersed and developed recreation would be emphasized. Development of dispersed areas and trails would be upgraded. Soil and watershed projects would correct existing problems.</p>
<p>2. Moderate Range - Maintenance Other Resources Intensive and non-intensive timber management on a few management areas to meet local demand. Fish and wildlife habitat would improve. Range condition would improve, allowing for small increase in AUMS. Provides for a moderate level of minerals management. Dispersed recreation would be emphasized. Developed recreation would be maintained. Soil, watershed and water quality will be maintained.</p>	<p>5. (Commodity Emphasis) High Timber, Range, Developed Recreation and Minerals - Maintenance of Other Resources Intensive timber stands that are high yielding would be scheduled for intensive management. Fish and wildlife habitat would improve. High investment in range improvements to generate increased AUMS. Developed recreation would be phased and new facilities constructed. Soil, watersheds and water quality would be maintained.</p>
<p>3. Moderate Range - Wildlife and Recreation/Maintenance of Other Resources Intensive and non-intensive timber management to meet local demand. Emphasis on improving wildlife and fish habitat. Range conditions would improve allowing for small increases in AUMS. Dispersed recreation will be emphasized. There will be a high level of timber management and improvements on developed recreation sites and trails. Soil and watershed projects would correct existing problems.</p>	<p>6. Proposed Wilderness Area proposed for wilderness. Managed to protect wilderness values until wilderness is established by congress.</p>



CHALLIS NATIONAL FOREST LAND & RESOURCE MANAGEMENT PLAN ALTERNATIVES MAP