

United States Department of Agriculture

Forest Service

IDAHO

AUG 2024

America's Great Outdoors

Ranger Districts

Yankee Fork

Challis-

Middle Fork,

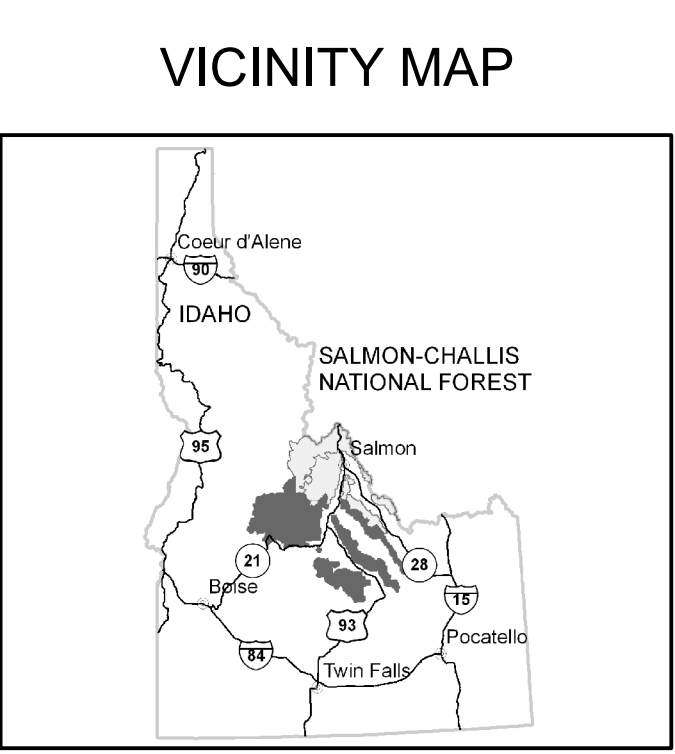
Lost River,

Salmon-Challis

National Forest

Use Map

Oversnow



**INFORMATION SOURCES**

Contact Information  
<http://www.fs.usda.gov/scnrf>  
Emergency Services..... 911  
Custer County Sheriff..... 208-879-2232  
Butte County Sheriff..... 208-527-8553  
Idaho State Police..... 208-525-7277  
Public Lands Center  
1206 S. Challis St.  
Salmon, Idaho 83467  
208-756-5100  
Lost River Ranger District  
P.O. Box 507  
Mackay, Idaho 83251  
208-588-3400  
Challis-Yankee Fork &  
Middle Fork Ranger Districts  
311 N US Highway 93  
Challis, Idaho 83226  
208-879-4100  
Report a Fish or Game Violation  
1-800-632-5999

**Legend**

- Roads Open to All Vehicles
- Trails Open to Oversnow Travel
- Routes with Oversnow Restrictions
- Highways, US, State
- Other Public Roads
- Other Public Trails
- Short Route Identifier
- FS Campground
- Picnic Area
- Motorized Trailhead
- Information Site
- Peaks
- Forest or Unit Boundary
- National Forest System Lands Open to Oversnow Cross-Country Travel
- Non-National Forest System Lands within the National Forest
- Lakes
- Areas with Oversnow Restrictions

0 1 2 4 6 8 Miles

N

FOREST SERVICE

U S

DEPARTMENT OF AGRICULTURE

treadlightly!

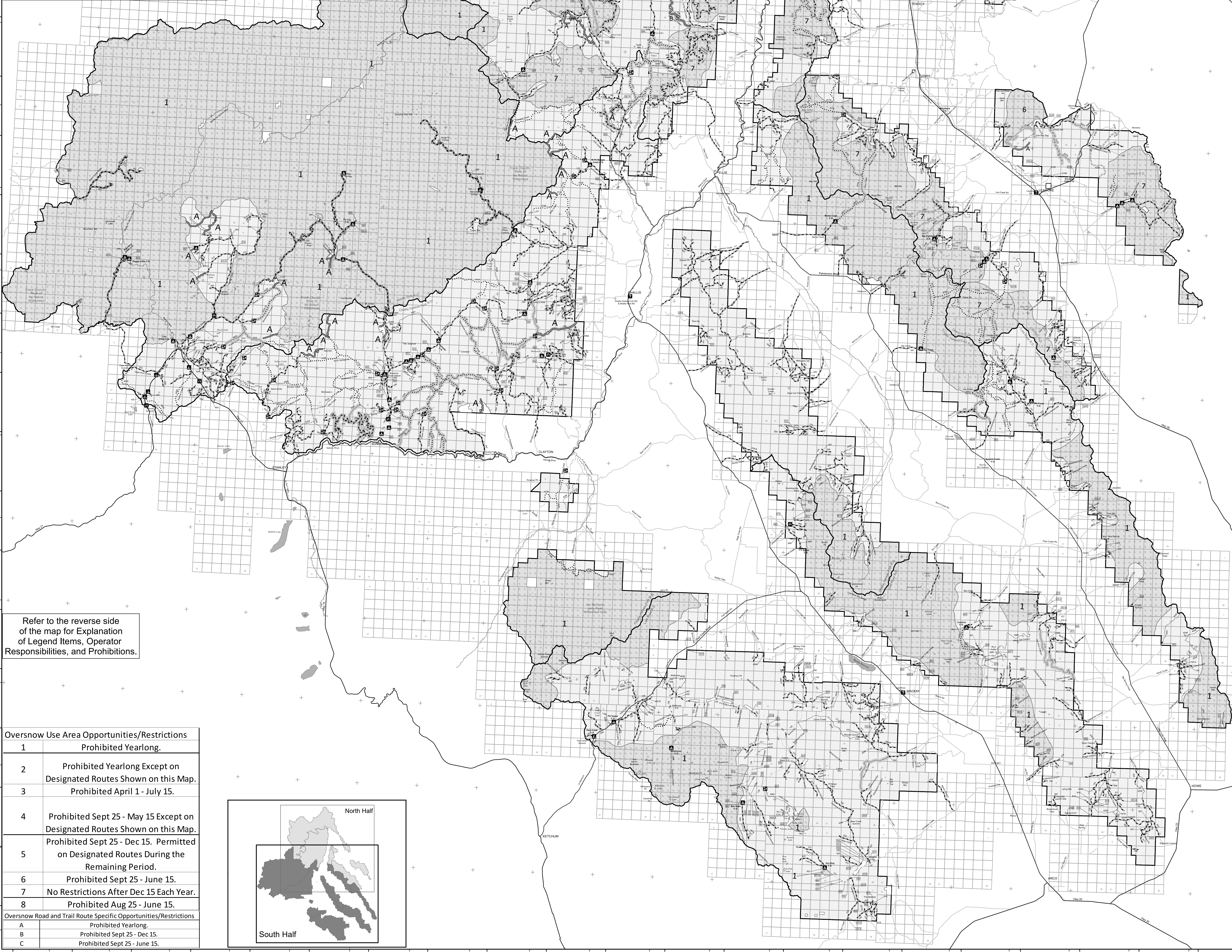
LEAVING A GOOD IMPRESSION

Travel and recreate with minimum impact.  
Respect the environment and the rights of others.  
Educate yourself plan and prepare before you go.  
Allow for future use of the outdoors by leaving it better than you found it.  
Discover the rewards of responsible recreation.

For more information on Tread Lightly!, go to [www.treadlightly.org](http://www.treadlightly.org) or call 1-800-966-9900.

FS-873-413

**DISCLAIMER-** Only Oversnow travel decisions should be made based on these maps. The Oversnow Use Maps should not be used to make wheeled motorized travel decisions, as they are not the official motorized travel designation maps (see the MVUM, Motor Vehicle Use Maps).



Refer to the reverse side of the map for Explanation of Legend Items, Operator Responsibilities, and Prohibitions.

Oversnow Use Area Opportunities/Restrictions	
1	Prohibited Yearlong.
2	Prohibited Yearlong Except on Designated Routes Shown on this Map.
3	Prohibited April 1 - July 15.
4	Prohibited Sept 25 - May 15 Except on Designated Routes Shown on this Map.
5	Prohibited Sept 25 - Dec 15. Permitted on Designated Routes During the Remaining Period.
6	Prohibited Sept 25 - June 15.
7	No Restrictions After Dec 15 Each Year.
8	Prohibited Aug 25 - June 15.
Oversnow Road and Trail Route Specific Opportunities/Restrictions	
A	Prohibited Yearlong.
B	Prohibited Sept 25 - Dec 15.
C	Prohibited Sept 25 - June 15.

