



# Green Mountain *National Forest*

Caring for the Land and Serving People

## Glastenbury/West Ridge Loop

### Trail Facts:

|   |   |
|---|---|
| <b>Length:</b> 21.8 mile loop                       | <b>Feature:</b> Mountain, View                |
| <b>Max. Elevation change:</b> 2450 feet             | <b>USGS maps:</b> Bennington & Woodford Quads |
| <b>Amount of use:</b> Moderate                      | <b>Hiking level:</b> Difficult                |
| <b>Average hike time:</b> 13 – 15 hours (multi-day) |   |

### Trail Description:

Follow the Appalachian/Long Trail, marked with white blazes, north, crossing the William A. McArthur Bridge. At 1.7 miles, there is a spur trail that leads to the Melville Nauheim Shelter. The trail continues on, crossing under a set of power lines with views to the east and west. A wet area, protected by puncheon, is traversed just before a bridge across Hell Hollow Brook at 3.1 miles. A lookout is reached at 4.3 miles and then the summit of Little Pond Mountain at 5.5 miles. From here, the trail follows the ridgeline to Glastenbury Mountain at 7.4 miles, descends, and then climbs steadily to reach Goddard Shelter at 9.8 miles. A short hike of 0.3 miles to the fire tower on the Glastenbury summit (3,748 feet) will yield a 360-degree view of the Green, Taconic, and Berkshire Mountains. The West Ridge Trail, marked with blue blazes, begins just west of the Goddard Shelter. At 12.3 miles, the trail reaches a woods road. At 17.5 miles, the trail reaches the summit of Bald Mountain. The West Ridge Trail then descends to the junction of the Bald Mountain Trail. Bear left over the steep, rocky descent, passing a Forest Service trail sign and a spur trail that leads to a seasonal spring at “Bear Wallow”. Natural springs are not tested for potability; please treat all drinking water. The trail then follows several woods roads. At the National Forest boundary, blazed with red, go right along the roadway. The trail reaches the Bald Mountain trailhead parking area at 19.5 miles. Go right to reach Route 9 at 20.3 miles. Turn left and follow Route 9 for about a mile to the AT/LT parking lot. Please practice Leave No Trace ethics, such as carry out what you carry in.

### Directions:

**From Route 7 in Bennington**, the trailhead is 5.2 miles east on Route 9;

**From Route 9 in Wilmington**, the trailhead is 15.8 miles west on Route 9;

- The parking area can be found at the Appalachian/Long Trail crossing, on the north side of Route 9.

### Area Services:

|  |
|--|
| <b>Food and Services:</b> A general store west on Route 9 or Wilmington        |
| <b>For all Emergencies:</b> Call <b>911</b>                                    |
| <b>911 Information:</b> The trailhead is in the Town of Woodford, off Route 9. |



**U.S. Department  
of Agriculture**

**Green Mountain & Finger Lakes National Forests**

231 North Main Street, Rutland, VT 05701



**Forest Service**

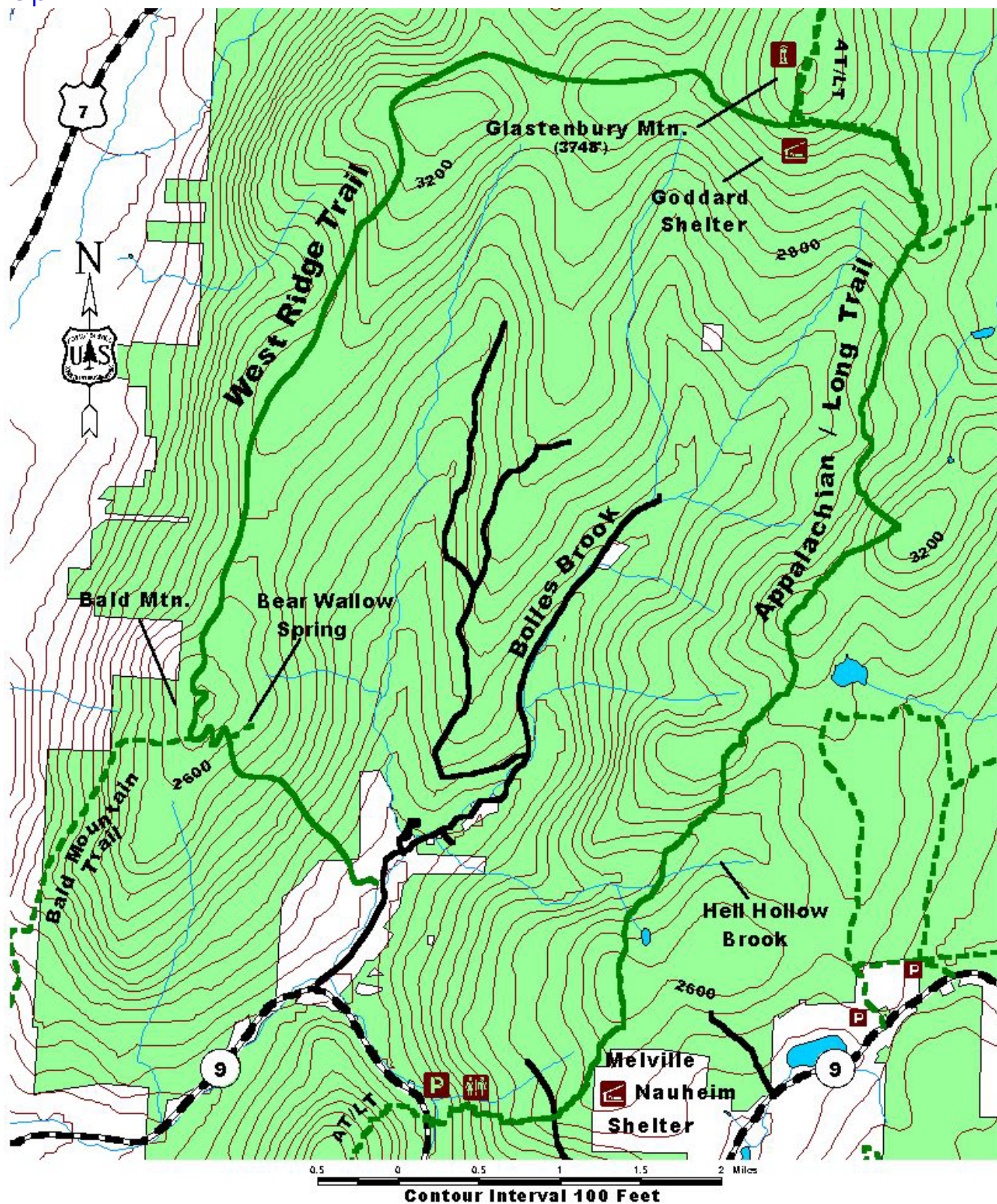
(802) 747-6700 Phone

(802) 747-6766 FAX

Website: [www.fs.usda.gov/greenmountain](http://www.fs.usda.gov/greenmountain)

The USDA is an equal opportunity provider and employer.

Map:



For More Information:

Manchester Ranger District, 2538 Depot St. (Rte 11/30), Manchester Center, VT 05255, (802) 362-2307

This Recreation Guide is Available in Large Print at Forest Service Information Centers

Last modified 02/19/2009