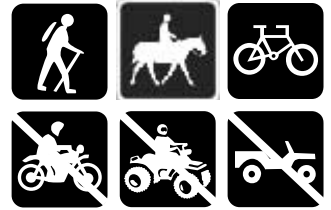




Flathead National Forest

Swan Lake Ranger District
Bigfork, Montana
406-837-7500



Switchback Trail #725

Distance: This trail is 3 miles long to the junction with the junction with Mount Aeneas Trail #725.

Difficulty: Moderate

USGS Quad: Jewel Basin

Beginning Elevation: 4,160 ft

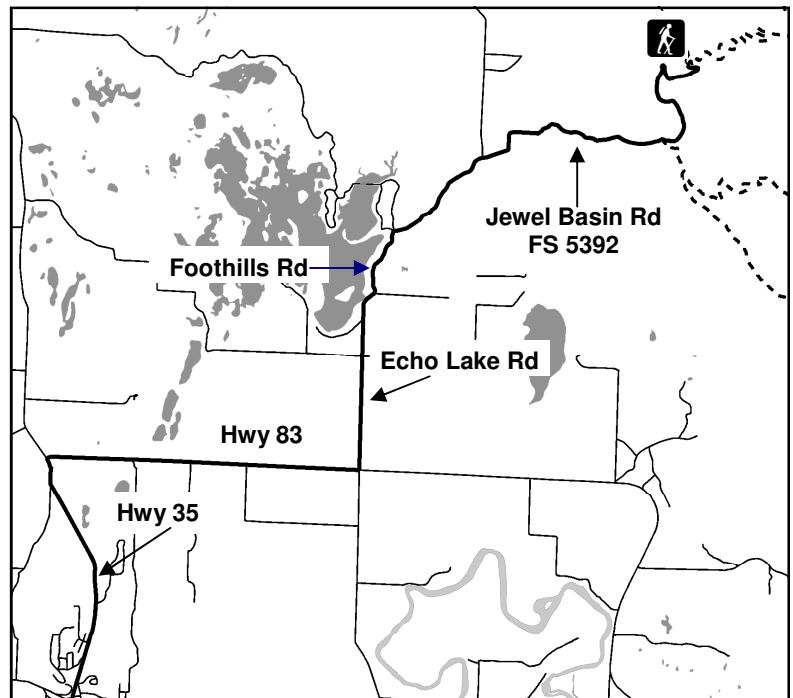
Ending Elevation: 6,400 ft

Directions: From Bigfork, go north on Highway 35 for 2.3 miles and turn right onto Highway 83. Stay on 83 for 2.8 miles and turn left onto Echo Lake Rd. After 2.2 miles, turn right onto Foothill Rd following the brown and white Jewel Basin sign. Continue for about 3 miles and continue straight following the Jewel Basin sign onto Forest Service Road #5392. The trailhead is 3.4 miles up this road; the trail starts on your right.

Season: This trail is normally free of snow by the end of May.

Regulations: Hiking, horse riding and mountain biking are allowed on these trails. Motorized vehicles, including motorcycles are prohibited.

Trail Description: The Switchback Trail embodies its name as it climbs 93 switchbacks up 2,300 feet over 3 miles from Forest Service Road #5392 to the junction with Mt. Aeneas trail #717, which then continues to the Jewel Basin Hiking Area. This trail winds its way up the ridge with medium to short switchbacks, so don't be discouraged by the number of them! Midway up the trees start to thin allowing some glimpses into the Flathead Valley. The last third of the trail almost finishes the ridge but then sidehills through an old burn allowing for great views of Flathead Lake and the Flathead Valley.



Note: Many roads are not displayed.

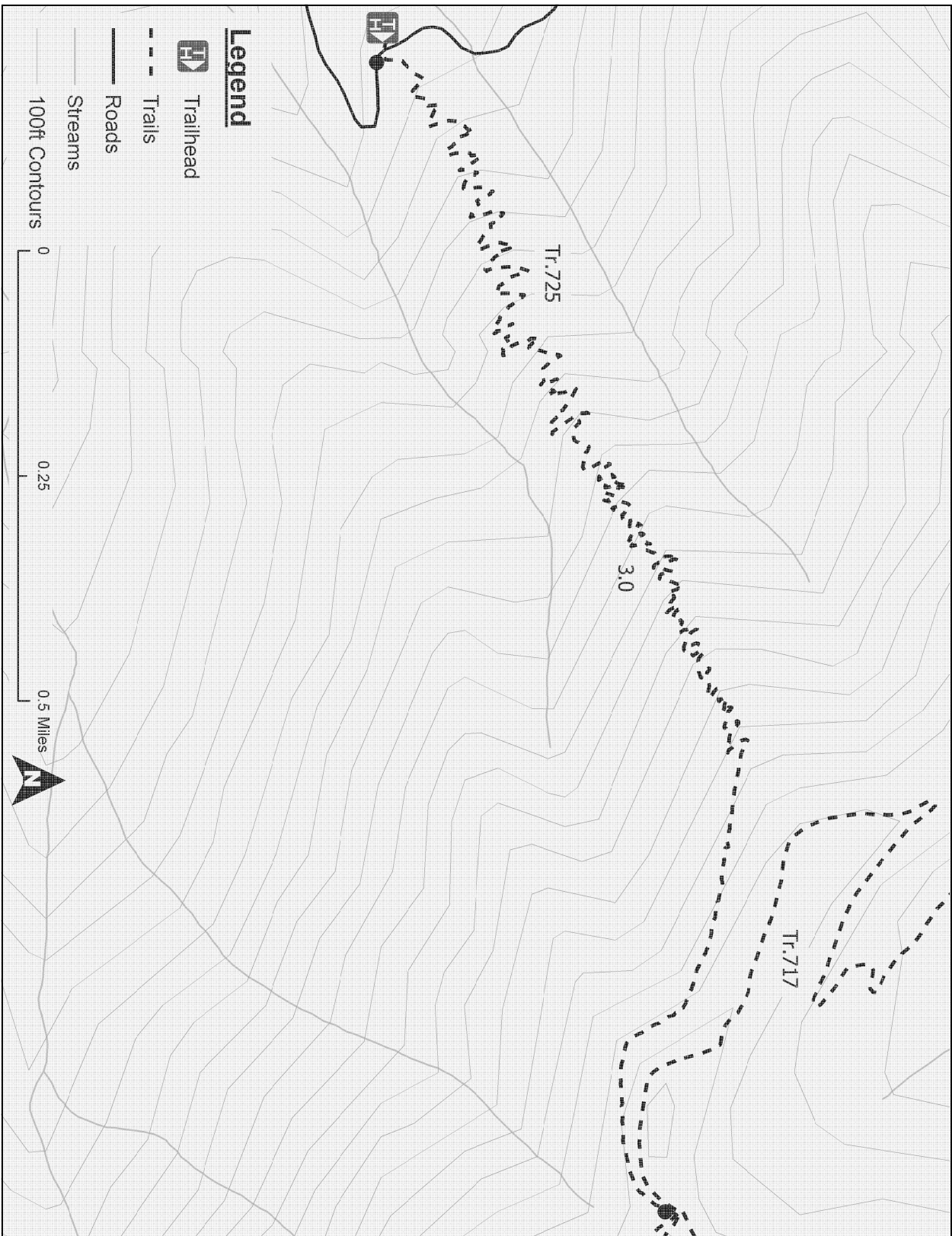
PACK IT IN — PACK IT OUT

LEAVE NO TRACE

PLAN AHEAD AND PREPARE

TRAVEL & CAMP ON DURABLE SURFACES

MINIMIZE CAMPFIRE USE



Disclaimer: The Forest Service reserves the right to correct, modify, or replace GIS products without notification. This information is not accurate for legal boundaries or for navigation purposes; it may not meet National Map Accuracy Standards. The Forest Service assumes no responsibility for the interpretation or application of this data by others.

RESPECT OTHERS

RESPECT WILDLIFE

LEAVE WHAT YOU FIND

DISPOSE OF WASTE PROPERLY