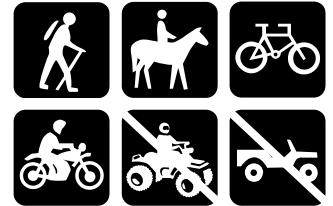




# Flathead National Forest

Swan Lake Ranger District  
Bigfork, Montana  
406-837-7500



## Sixmile Lookout Trail #10 and Sixmile Sidehill Trail #27

Distance: The Sixmile Lookout Trail is 4.4 miles long. The Sixmile Sidehill Trail is 3.4 miles long from the trailhead.

Difficulty: Moderate

USGS Quad: Swan Lake

Beginning Elevation: 4,000 ft

Ending Elevation: 7,410 ft

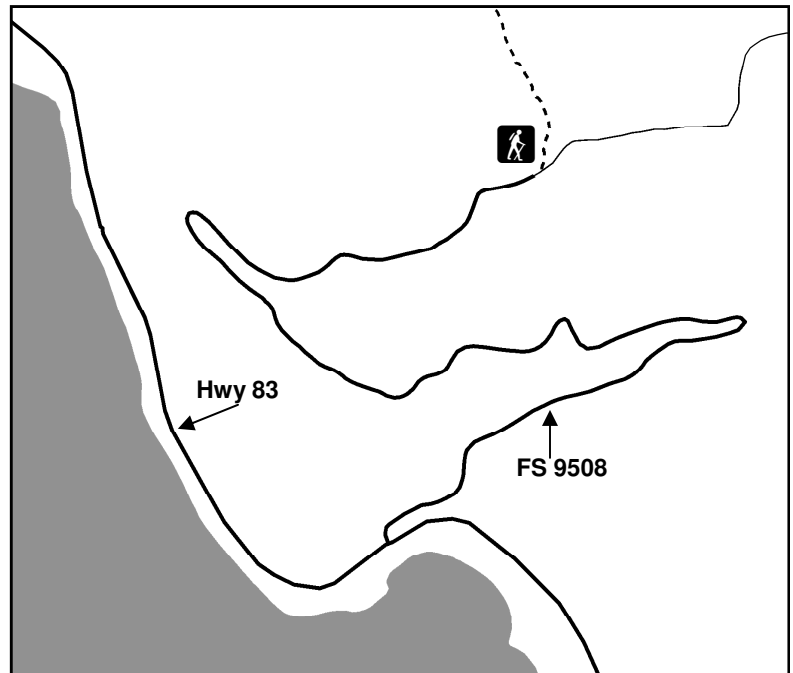
Directions: From Highway 83 turn east onto road 9508 near mile marker 73 just north of town but south of the Swan Stage Stop. The trailhead is located on the left side, approximately 3.6 miles up. Trail #27 starts about 1 mile up from the trailhead off of Trail #10.

Season: This trail is normally free of snow by the end of May.

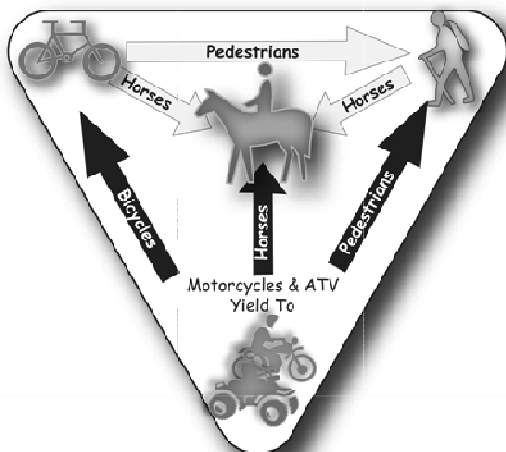
Regulations: Hiking, horse riding, mountain biking, and motorcycles are allowed on these trails. Other motorized vehicles are prohibited.

Trail Description: The Sixmile Lookout trail is 4.4 miles long and climbs 3,400 feet. It begins off of Forest Service Road #9508 and ends at Sixmile Peak after the junction with the Alpine Trail #7.

The Sixmile Sidehill trail is 2.5 miles long after it's junction with Sixmile Lookout Trail #10. Please note, there is illegal activity accessing lands at the north end of this trail. Please bring your map, know where you are, and respect private property. If you are using motorized equipment please note that you must stay on the trail—there is no open area riding.



Note: Many roads are not displayed.



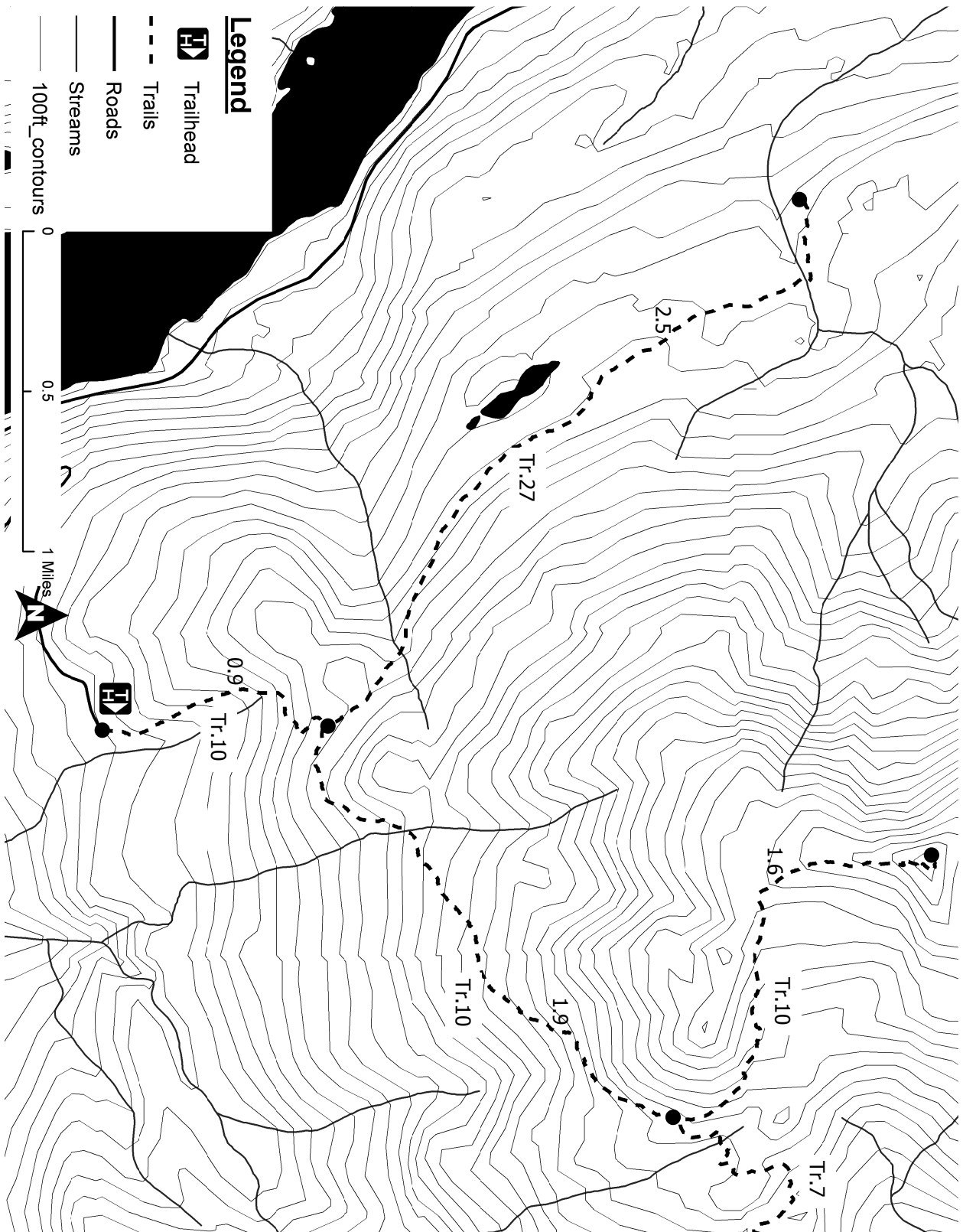
LEAVE NO TRACE

PACK IT IN — PACK IT OUT

PLAN AHEAD AND PREPARE

TRAVEL & CAMP ON DURABLE SURFACES

MINIMIZE CAMPFIRE USE



Disclaimer: The Forest Service reserves the right to correct, modify, or replace GIS products without notification. This information is not accurate for legal boundaries or for navigation purposes; it may not meet National Map Accuracy Standards. The Forest Service assumes no responsibility for the interpretation or application of this data by others.

RESPECT OTHERS

RESPECT WILDLIFE

LEAVE WHAT YOU FIND

DISPOSE OF WASTE PROPERLY