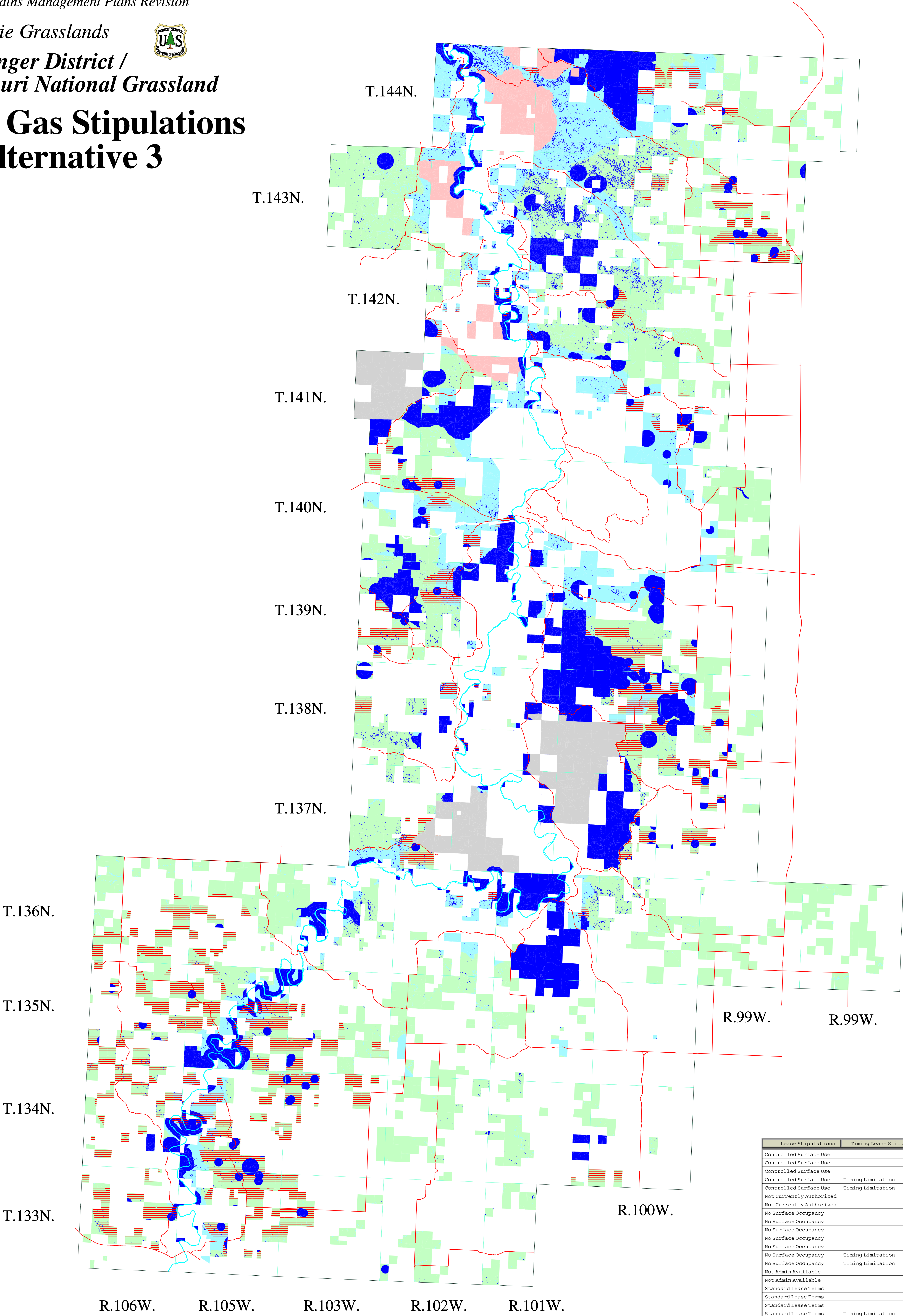


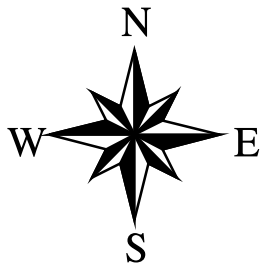
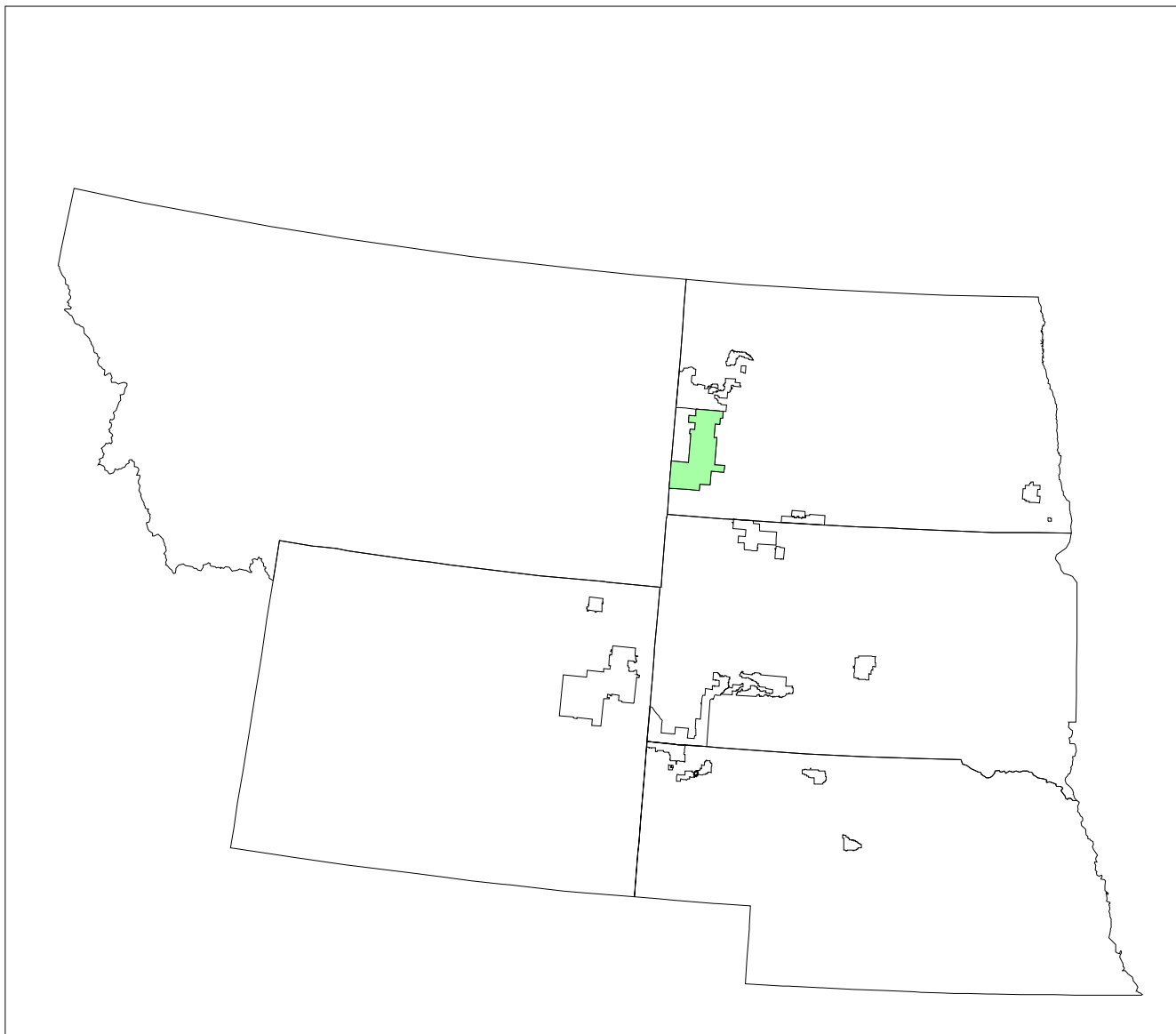


Oil and Gas Stipulations
FEIS Alternative 3



Lease Stipulations	Timing Lease Stipulations	Status	Acres
Controlled Surface Use		NP	62469
Controlled Surface Use		NON-NP	8433
Controlled Surface Use		State	463
Controlled Surface Use	Timing Limitation	NP	12975
Controlled Surface Use	Timing Limitation	NON-NP	2747
Not Currently Authorized		NP	16445
Not Currently Authorized		NON-NP	489
No Surface Occupancy		NP	86676
No Surface Occupancy		NON-NP	7625
No Surface Occupancy		State	11
No Surface Occupancy		NP	6405
No Surface Occupancy		NON-NP	2195
No Surface Occupancy	Timing Limitation	NP	1342
No Surface Occupancy	Timing Limitation	NON-NP	442
Not Admin Available		NP	30259
Not Admin Available		State	0
Standard Lease Terms		NP	176327
Standard Lease Terms		NON-NP	14171
Standard Lease Terms		State	0
Standard Lease Terms	Timing Limitation	NP	67895
Standard Lease Terms	Timing Limitation	NON-NP	6626
Standard Lease Terms	Timing Limitation	State	0

The Oil and Gas Stipulations and the acres in the table represent Federal subsurface mineral ownership and do not represent surface ownership.



4 0 4 8 Miles

1 : 126,720
1/2 inch = 1 mile

The U.S. Department of Agriculture (USDA) prohibits discrimination in all its programs and activities on the basis of race, color, national origin, gender, religion, age, disability, political beliefs, sexual orientation, and marital or family status. (Not all prohibited bases apply to all programs). Persons with disabilities who require alternative means for communication of program information (Braille, large print, audio tape, etc.) should contact USDA's TARGET Center at (202) 720-2600 (Voice and TDD).

To file a complaint of discrimination write USDA, Director, Office of Civil Rights, Room 326-W, Whitten Building, 14th and Independence Avenue, SW Washington, DC 20250-9410 or call (202) 720-5964 (Voice or TDD). USDA is an equal opportunity provider and employer.

This GIS product was compiled from various sources and may be corrected, updated, modified, or replaced at any time. For more information contact:

USDA Forest Service
125 North Main
Chadron NE 69337
(308) 432-0300

\\sfiles\ref\library\gis\dakota\project\work\1\ngp\medom\og_feis3_u_med.apr
og_feis3_u_med.rtf

7/10/2002

Final

- Administrative Boundaries
- Major Roads
- Township & Range Lines
- Little Missouri River
- Oil and Gas Stipulations
 - Not Admin Available
 - Not Currently Authorized
 - No Surface Occupancy
 - Controlled Surface Use
 - Paleo Controlled Surf Use
 - Standard Lease Terms
 - Timing Limitations