

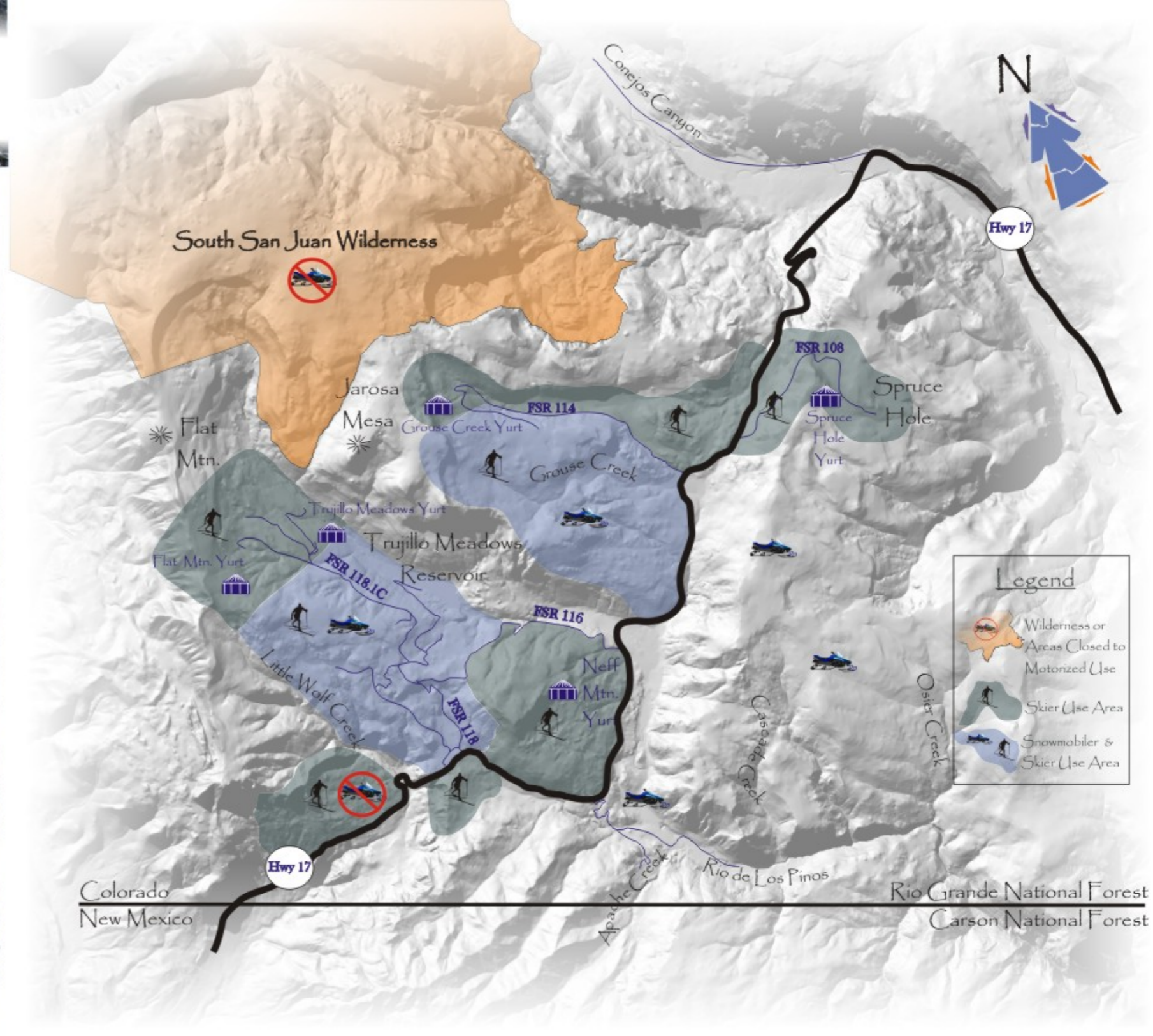


# Rio Grande National Forest

## Cumbres & LaManga Winter Recreation



We can work together! There has been growing conflict between skiers and snowmobilers in this area and we are concerned this is compromising recreation safety. The map to the right identifies voluntary use areas in order to reduce conflicts. Skiers, snowshoers, and snowmobilers, please abide by this map so that all winter recreationists may enjoy this special area.



Colorado  
New Mexico

Rio Grande National Forest  
Carson National Forest

## Remember



Be considerate of other visitors using the trail-keep to the right.



Slow down when passing.



Ride only where permitted.



Snowmobilers yield to skiers.



Pack it in, Pack it out.



All off-highway vehicles, motorcycles, and over snow vehicles must be registered and non-resident machines must have valid Colorado Permits.

## Trail Etiquette



Leave space between you and other skiers and alert others when passing.



Do not obstruct ski trails or intersections. When stopped, step to the side out of the tracks. If you fall, move off the track as quickly as possible.



No motorized use in designated Wilderness.

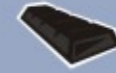


Careless and reckless driving injures you and those around you. Don't Do It.

## Safety



Dress in layers.



Always carry water and high energy food.



Watch for bad weather- Weather can change quickly and leave you stranded.



Carry maps, avalanche beacons, probe poles and snow shovels for avalanche safety.

Please be courteous and respectful to other users and the land, resources, and wildlife.

Public Lands are multi-use and to be enjoyed by all visitors.

Please respect private land boundaries and obtain permission prior to entering.

Caring for the Land  
and Serving People.



United States Department of Agriculture - Forest Service - Rocky Mountain Region

NONDISCRIMINATION STATEMENT: The U.S. Department of Agriculture (USDA) prohibits discrimination in all its programs and activities on the basis of race, color, national origin, age, disability and where applicable, sex, marital status, familial status, parental status, religion, sexual orientation, gender, information, political beliefs, reprisal, or because all or a part of an individual's income is derived from any public assistance program. (Not all prohibited bases apply to all programs.) Persons with disabilities who require alternative means for communication of program information (Braille, large print, audiotape, etc.) should contact USDA's TARGET Center at (202) 720-2600 (voice and TDD). To file a complaint of discrimination write to USDA, Director, Office of Civil Rights, 1400 Independence Avenue, S.W., Washington, D.C. 20250-9410 or call (800) 795-3272 (voice) or (202) 720-6962 (TDD). USDA is an equal opportunity provider and employer.