

Road 19 Trail #775B



Recreation Opportunity Guide

Distance..... 0.8 miles (one way)
Elevation..... 1550-1650 feet
Snow Free June to November



Easier

Trail Highlights: This is a short, easy trail wide enough to walk side by side with another person.

Trail Description: This trail connects a 0.7 mile gap in the Zigzag Mountain Road (Forest Road 1819). The west trailhead is shared with Zigzag Mountain Trail #775.

Regulations & Leave No Trace Information:

Leave No Trace

- Plan Ahead and Prepare: Prepare for extreme weather, hazards and emergencies.
- Travel and Camp on Durable Surfaces: Use established trails and campsites.
- Dispose of Waste Properly: Pack out all trash, leftover food and litter.
- Leave What You Find: Avoid introducing or transporting non-native species.
- Minimize Campfire Impacts: Use established fire rings & keep fires small.
- Respect Wildlife: Control pets at all times.
- Be Considerate of Other Visitors: Avoid loud voices and noises.

For information on **Leave No Trace**, go to www.LNT.org or call 1-800-332-4100

For current trail conditions and more recreation information go to:

<http://www.fs.usda.gov/mthood>

Map and driving directions on next page

Mt. Hood National Forest
16400 Champion Way
Sandy, OR 97055
503-668-1700

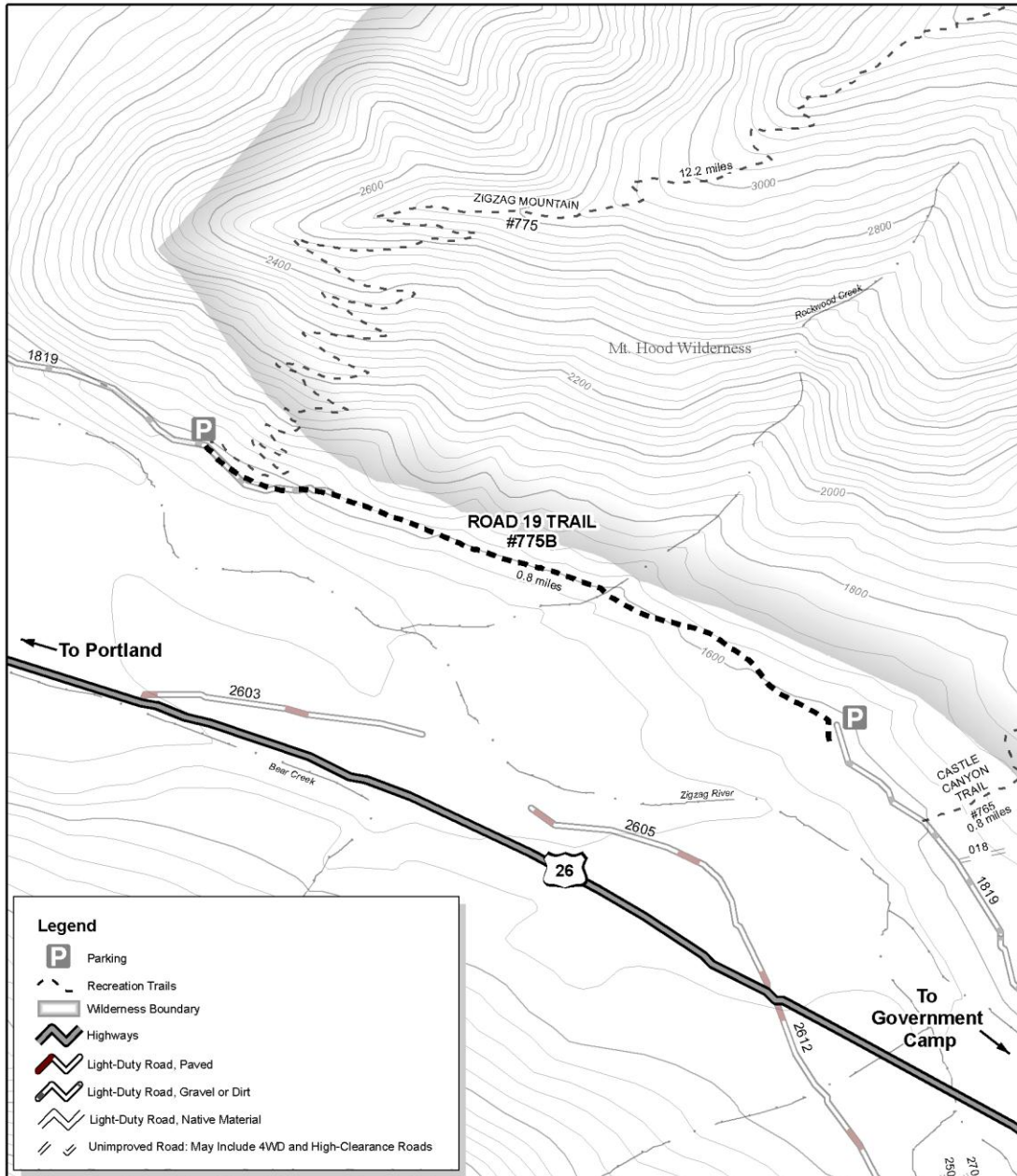
Zigzag Ranger District
70220 E. Highway 26
Zigzag, Oregon 97049
503-622-3191

The USDA is an equal opportunity provider and employer.



Directions to Trailhead: To reach the **WEST** end of this trail from Portland, travel 17.5 miles east of Sandy on US Hwy 26 and turn left at E Lolo Pass Road (Forest Road 18). Travel 0.4 mile and turn right (east) at E Mountain Drive. Travel 0.6 mile on E Mountain Drive to the trailhead and parking area on the northeast side of the road. A limited amount of parking is available on the road shoulder. To reach the **EAST** end of this trail from Portland, travel 19 miles east of Sandy on US Hwy 26 and turn north onto E Arlie Mitchell Road (Mt. Hood foods market). This road will point you back westward for 200 yards, then bears right. After ¼ mile, you will come to a junction with Henry Creek Rd and Forest Road 1819. Travel 0.5 mile to the end of Zigzag River Road (Forest Road 1819). The trail starts 125 feet south of the road terminus.

775B ROAD 19 TRAIL
0.8 miles 1.2 km



Recommended maps: Zigzag Ranger District

