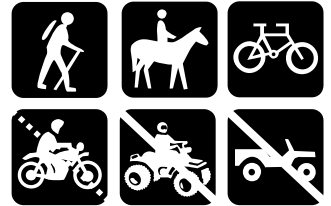




# Flathead National Forest

Swan Lake Ranger District  
Bigfork, Montana  
406-837-7500



## Peterson Creek Trail #293

**Distance:** This trail is 5.9 miles long to the junction with Alpine #7. It is 3.6 miles to the junction of Broken Leg Divide Trail 353. From 7/1-11/30 2 miles must be walked on a closed road.

**Difficulty:** Difficult

**USGS Quad:** Crater Lake, Big Hawk Mtn

**Beginning Elevation:** 3,520 ft

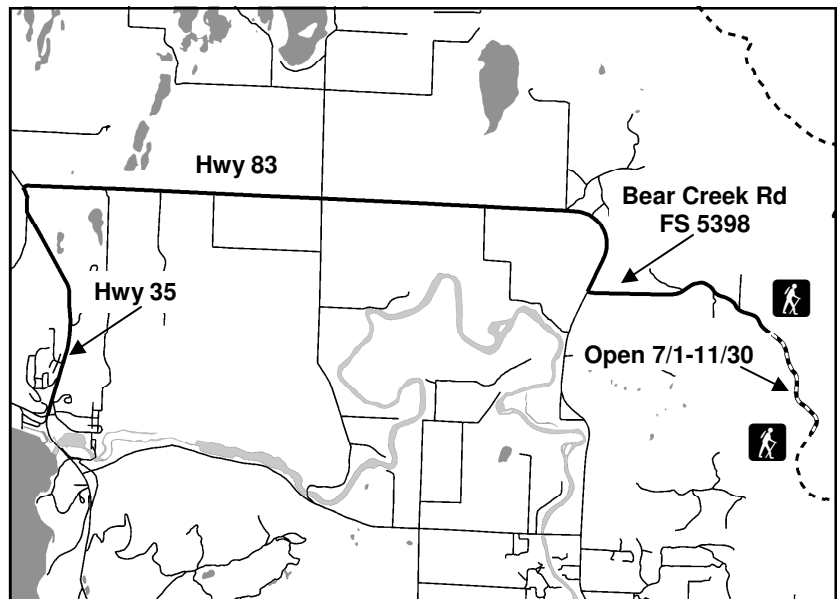
**Ending Elevation:** 6,160 ft

**Directions:** From Bigfork, go south on Highway 35 for 0.7 miles, then turn left onto Highway 209. Stay on 209 for 4.9 miles and turn left onto Highway 83 for 2.4 miles. Turn left onto road 5398, also called Bear Creek Rd, just past mile marker 85. The trailhead is located at the end of road 5398 approximately 1.9 miles when gated or 3.1 miles between 7/1-11/30.

**Season:** This trail is normally snow free by the end of May.

**Regulations:** Hiking, horse riding, and mountain biking are allowed on these trails. Motorcycles are prohibited from 12/1 to 6/30, but allowed on this trail from 7/1-11/30. ATV's and highway vehicles are prohibited.

**Trail Description:** The Peterson Creek trail #293 is 5.9 miles long and climbs about 1,700 feet. It starts from Forest Service Road # 5398 and ending at the junction with the Alpine Trail #7. The trailhead is accessible from 7/1-11/30, otherwise there is an additional 1.2 miles that must be walked on a closed road. This trail has great views of the Swan Lake area and the Flathead Valley with partial views of Flathead Lake available within the first 2 miles of the hike from the trailhead. The trail then winds through the forest, an old burn area, sidehills along some steep terrain, and finally goes through a pass near the ridge. The trail is open for the following uses: hiking, horseback riding, and mountain biking. Motorcycle trail riding is only allowed from 7/1-11/30.



Note: Many roads are not displayed.

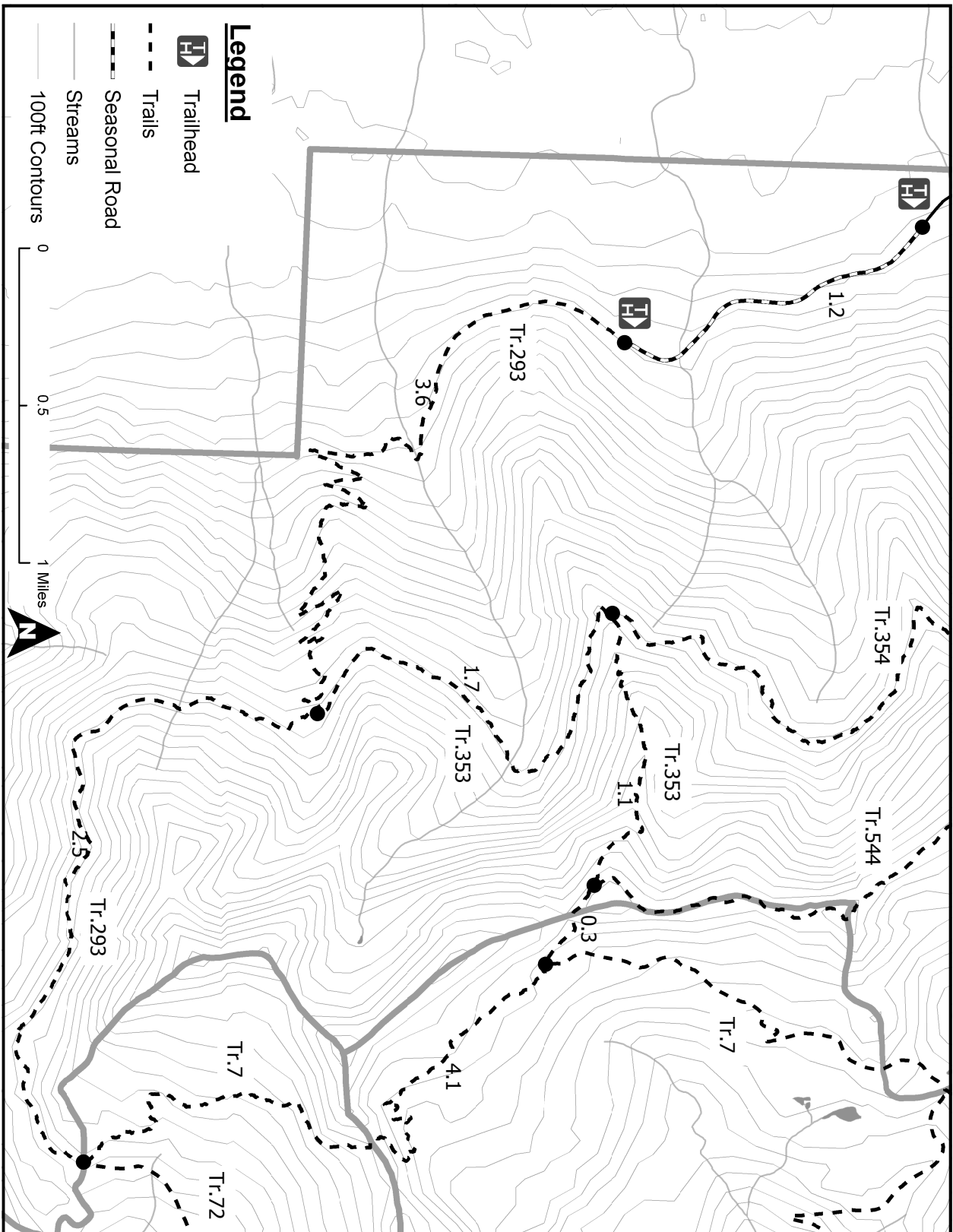
PACK IT IN — PACK IT OUT

LEAVE NO TRACE

PLAN AHEAD AND PREPARE

TRAVEL & CAMP ON DURABLE SURFACES

MINIMIZE CAMPFIRE USE



Disclaimer: The Forest Service reserves the right to correct, modify, or replace GIS products without notification. This information is not accurate for legal boundaries or for navigation purposes; it may not meet National Map Accuracy Standards. The Forest Service assumes no responsibility for the interpretation or application of this data by others.

RESPECT OTHERS

RESPECT WILDLIFE

LEAVE WHAT YOU FIND

DISPOSE OF WASTE PROPERLY