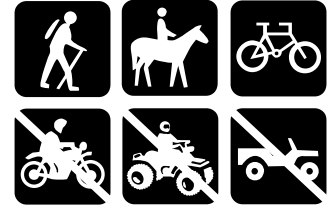




Flathead National Forest

Swan Lake Ranger District
Bigfork, Montana
406-837-7500



Bond Creek Trail #21

Distance: It is about 6.0 miles to Bond Lake (5,300 ft), 7.0 miles to Trinkus Lake (5,900 ft), and 7.5 miles to the junction with Alpine Trail #7 (6,000 ft).

Difficulty: Moderate

USGS Quad: Swan Lake and Connor Creek

Beginning Elevation: 3,097 ft

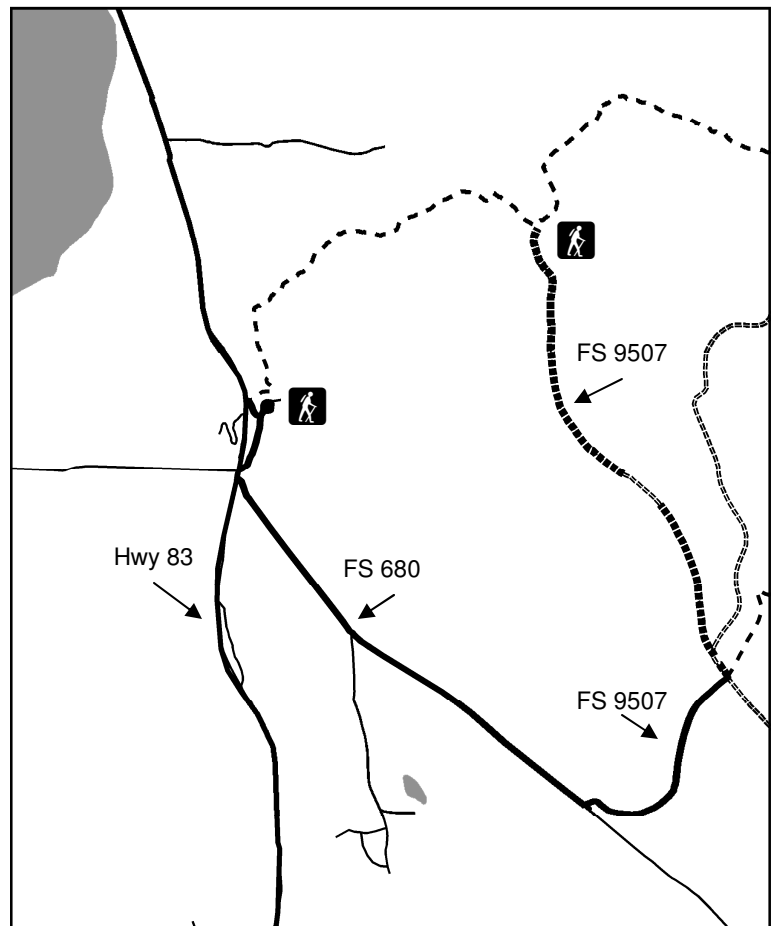
Ending Elevation: 6,047 ft

Directions: From Highway 83, turn east at sign for Bond Creek trailhead, across the street from the Swan Guard Station, near mile marker 71. The trailhead is just north of the turn for Forest Service road #680. Alternatively, from 12/1-10/14 you may access another trailhead further east by turning east onto Forest Service road #680, after 1.5 miles, turn left onto road #9507, turn left at the road intersection to stay on 9507 to the end of the road where the trail starts, 2.3 miles from the intersection with road #680.

Season: This trail is normally free of snow in Early June.

Regulations: Hiking, horse riding and mountain biking are allowed on these trails. Motorized vehicles, including motorcycles, are prohibited.

Trail Description: Bond Creek Trail #21 begins flat and then steadily climbs alongside Bond Creek to Bond Lake. There is a small water cascade approximately 3.5 miles up the trail which is a popular picnic spot. This trail then continues up through an avalanche slide path to Trinkus Lake and afterwards to Alpine Trail #7. The trail climbs about 2,300 feet over 6 miles to Bond Lake, then an additional mile and 600 feet to Trinkus, and finally meets the Alpine trail #7 at a total of 7.5 miles from the trailhead. There are two trailheads that access Bond Creek: one trailhead is located just off of Highway 83, the other is open except from 10/15-11/30 and can be accessed off of Road #9507.



Note: Many roads are not displayed.

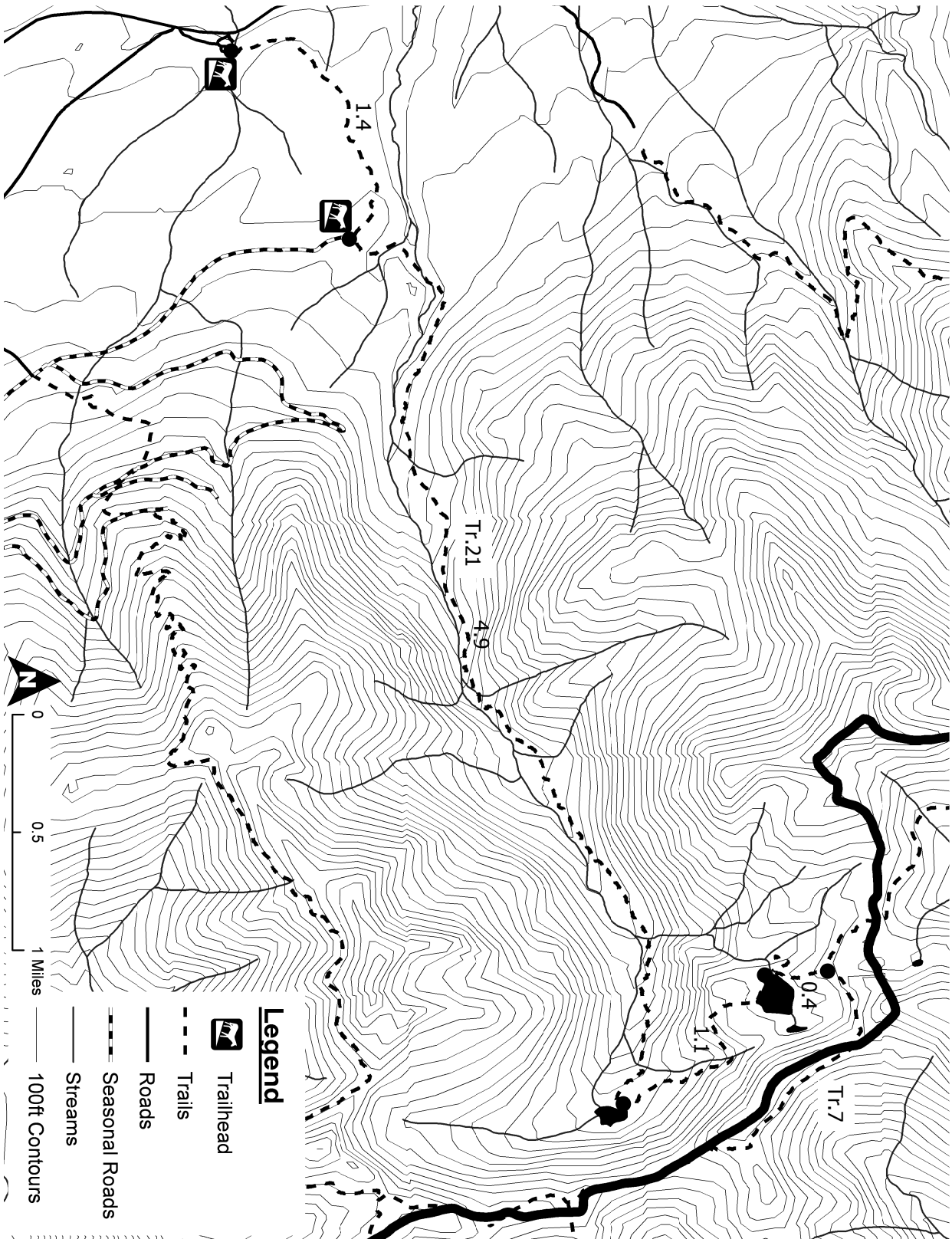
PACK IT IN — PACK IT OUT

LEAVE NO TRACE

PLAN AHEAD AND PREPARE

TRAVEL & CAMP ON DURABLE SURFACES

MINIMIZE CAMPFIRE USE



Disclaimer: The Forest Service reserves the right to correct, modify, or replace GIS products without notification. This information is not accurate for legal boundaries or for navigation purposes; it may not meet National Map Accuracy Standards. The Forest Service assumes no responsibility for the interpretation or application of this data by others.

RESPECT OTHERS

RESPECT WILDLIFE

LEAVE WHAT YOU FIND

DISPOSE OF WASTE PROPERLY