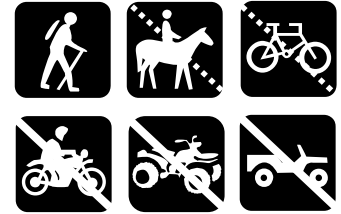




Flathead National Forest

Swan Lake Ranger District
Bigfork, Montana
406-837-7500



Crater Notch Trail #187

Distance: This trail leaves from Broken-Leg Divide trail #544 after 1/2 mile. The Crater Notch trail itself is 3.6 miles long. From the trailhead it is 5.1 miles to Birch Lake, 4.7 miles to In-thlam-keh Lake, and 5.6 miles to Crater Lake.

Difficulty: Moderate

USGS Quad: Jewel Basin

Beginning Elevation: 3,255 ft

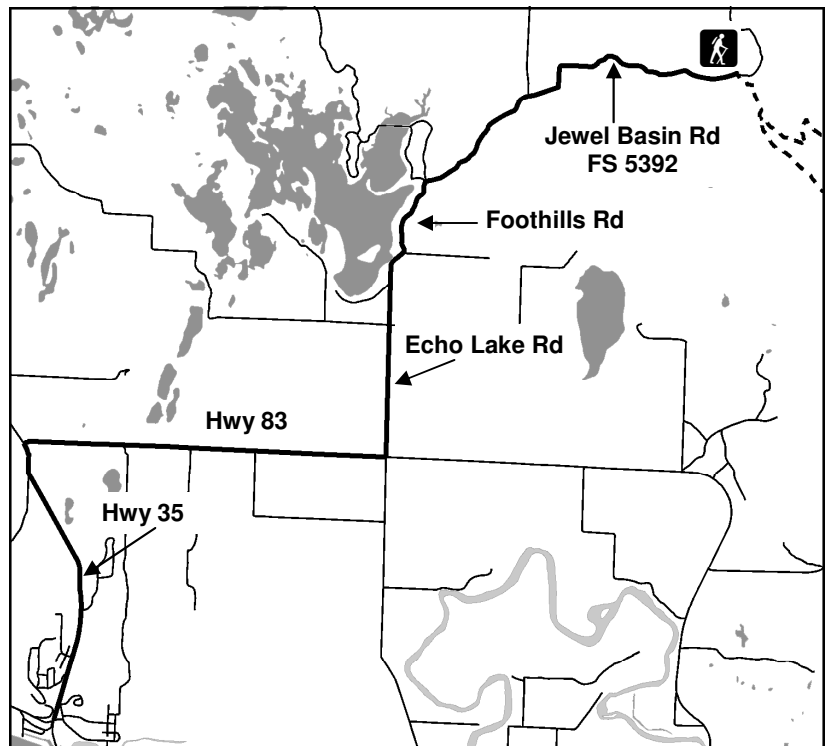
Ending Elevation: 6,175 ft

Directions: From Bigfork, go north on Highway 35 for 2.3 miles and turn right onto Hwy. 83. Stay on 83 for 2.8 miles, turning left onto Echo Lake Rd. After 2.2 miles, merge slightly right onto the Foothills Road. After 1.1 miles turn right onto Road #5392 also called Jewel Basin Rd. The trailhead is about two miles up the road on the right.

Season: This trail is normally free of snow by mid-May.

Regulations: For the first 3.3 miles, this trail is open to hiking, horse riding, and mountain biking but closed to motorized vehicles. The last mile of this trail accesses terrain in the Jewel Basin Hiking Area which is open to hiking only.

Trail Description: The Crater Notch Trail is 3.6 miles long and climbs about 3,000 feet. It begins 1/2 mile up the Echo-Brokenleg Trail #544 and ends at the Alpine Trail #7 leading to In-thlam-keh Lake. After 3.3 miles the trail enters the Jewel Basin Hiking Area where the only allowed use is hiking.



Note: Many roads are not displayed.

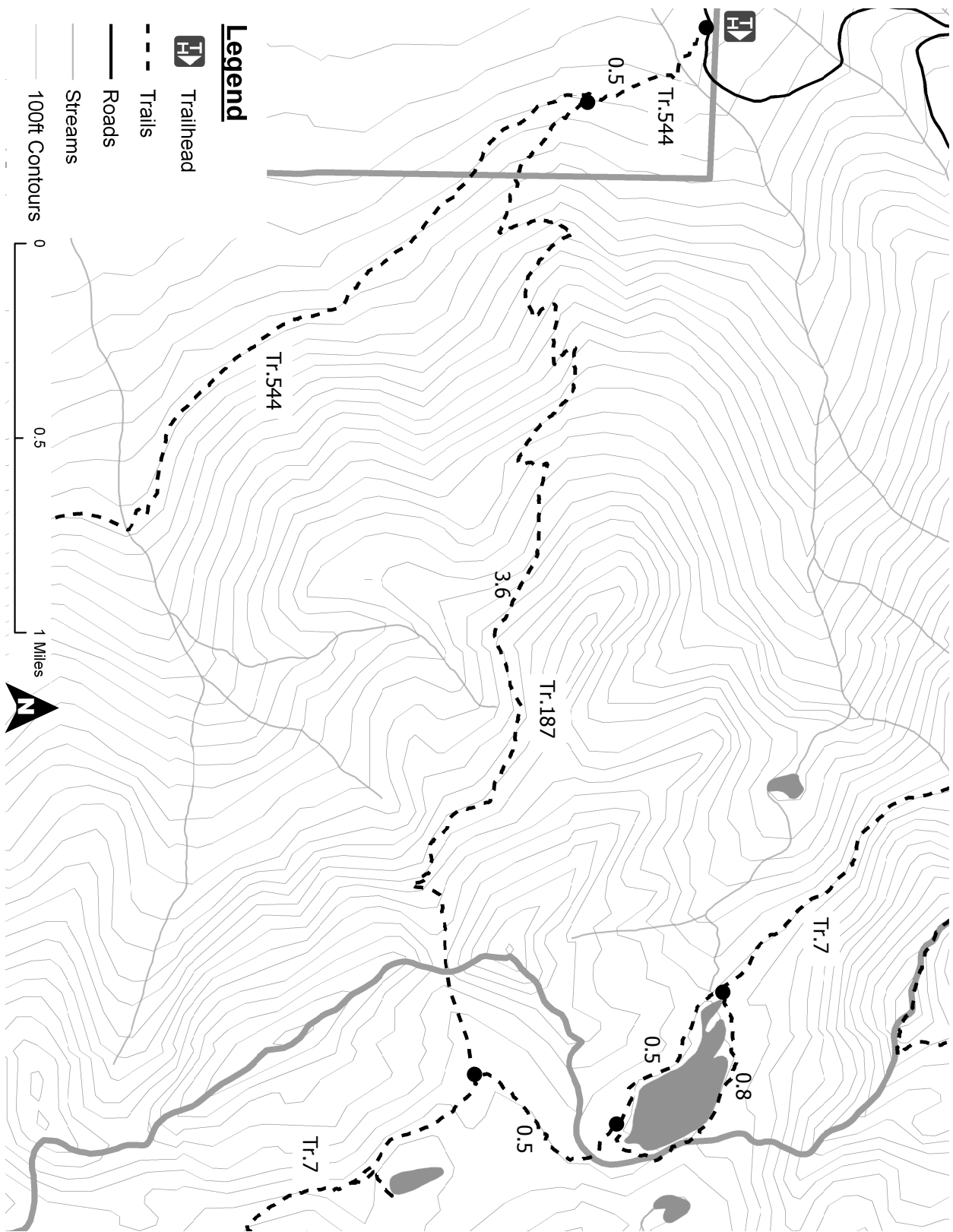
PACK IT IN — PACK IT OUT

LEAVE NO TRACE

PLAN AHEAD AND PREPARE

TRAVEL & CAMP ON DURABLE SURFACES

MINIMIZE CAMPFIRE USE



Disclaimer: The Forest Service reserves the right to correct, modify, or replace GIS products without notification. This information is not accurate for legal boundaries or for navigation purposes; it may not meet National Map Accuracy Standards. The Forest Service assumes no responsibility for the interpretation or application of this data by others.

RESPECT OTHERS

RESPECT WILDLIFE

LEAVE WHAT YOU FIND

DISPOSE OF WASTE PROPERLY