

Big Lake/Agassa Lake



SUPERIOR NATIONAL FOREST

KAWISHIWI DISTRICT

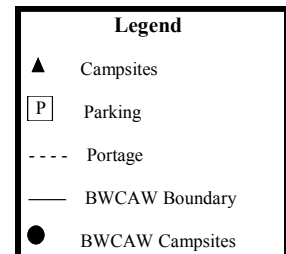
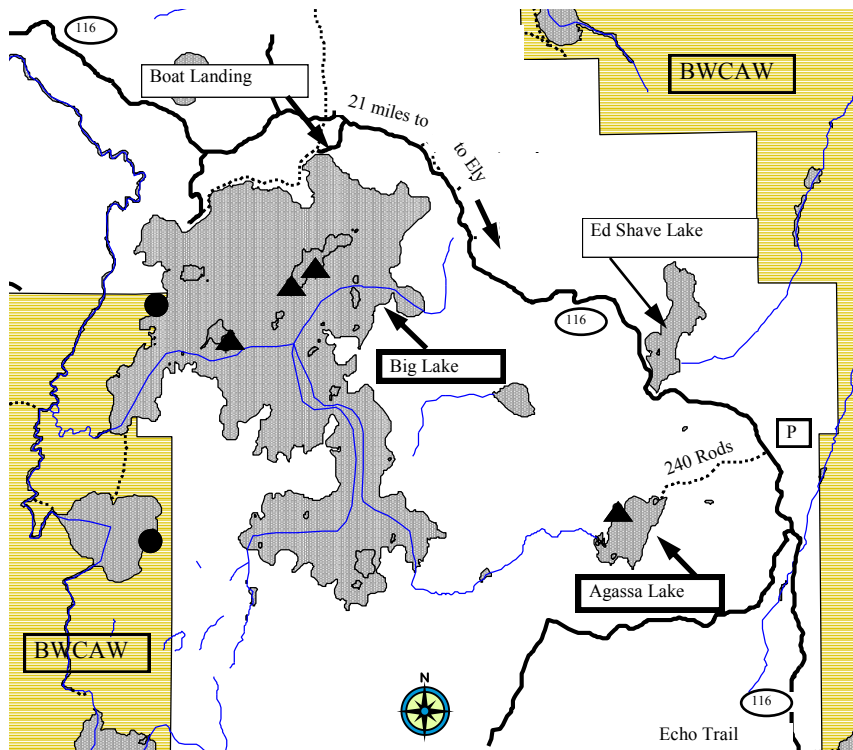
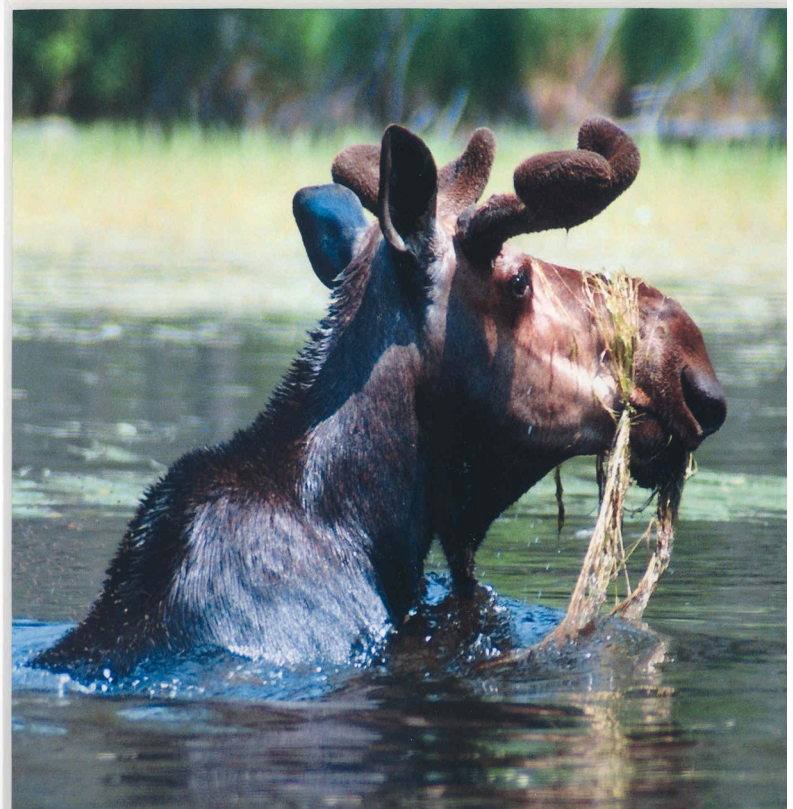
ELY, MN

Location

Agassa Lake is located 17 miles northwest of Ely on County road 116 (Echo Trail).

From Ely take Highway 169 east 1 mile to County road 88. Turn left, go 2 miles to County Road 116 (Echo Trail). Follow County Road 116 for 14 miles. Agassa Lake parking will be on the right in the Angeworm parking area. You will enter the portage which is across County Road 116 from the parking lot.

Big Lake is located on the left 4 miles farther on County road 116 from Agassa. Turn left on Forest road 1872.



Big Lake/Agassa Lake Backcountry sites

Features

Big Lake

- 3 Campsites on islands
- Fire grates, latrines
- Log picnic tables on 2 sites
- Boat ramp
- No camping fee
- 1 BWCAW campsite

Leave
No
Trace



Use of fire grates helps protect the environment for future campers. Use only dead and down wood for campfires. *Never peel birch trees.* When you leave your site, all trash must be taken with you.

Be considerate of others and respect private property.

Through education and sound *Leave No Trace* practices, future generations will be able to enjoy the experience of a back country camping trip.

For more information contact:
Superior National Forest
Kawishiwi Ranger District
1393 Hwy. 169
Ely, MN 55731
218-365-7600
www.fs.usda.gov/superior

Back country sites can be found on many lakes that are outside of the BWCA Wilderness, yet within the National Forest boundaries. These sites offer many characteristics of BWCAW sites and are available on a first-come, first-served basis. However, a permit is not required and there are no camping fees. Back country sites offer fire grates, latrines and tent pads. Wells and electrical hook-ups are not available. Superior National Forest rules and regulations apply, as well as the Leave No Trace principals listed. Always be considerate of others by keeping noise to a minimum. Individual lake maps showing site locations are available from Forest Service Offices or at outfitters in the area. Please respect the National Forest. *Leave No Trace* of your visit. If you pack it in, pack it out.

Features

Agassa Lake

- One back country campsite
- Ideal for day trips
- Small lake covers 90 acres and has a depth 9 feet
- 240 rod portage access limits the watercraft to small boats or canoes
- Fish species include walleye and perch



The USDA Forest Service is an equal opportunity service provider and employer.