

Boulder Ranger District
2140 Yarmouth Avenue
Boulder, CO 80301
(303) 541-2500
FAX: (303) 541-2515



United States Department of Agriculture



Lost Lake Trail #813

Difficulty: Moderate

Trail Use: Moderate to Heavy

Length: From Hessie Trailhead (TH) to Lost Lake - 1.4 miles. DISTANCE IS ONE WAY.

Elevation: 9,000 feet at Hessie TH; 9,800 feet at Lost Lake.

Open To: Hiking

Access

- From Nederland, head south on Colorado Highway 119 for ½ mile. Turn west onto County Road 130 (Eldora Ski Resort sign). Stay on the main road through the town of Eldora.
- Once the pavement ends, continue for another mile. Look for a sign and vehicles parked above a side road heading sharply down and to the left. This side road leads to Hessie TH and is a cobblestone creek bed that carries water year round. Vehicles without high clearance should park at this junction. From here, it is a ¼-mile walk to the trailhead.
- This trailhead sees high use, especially on weekends, and parking is limited.

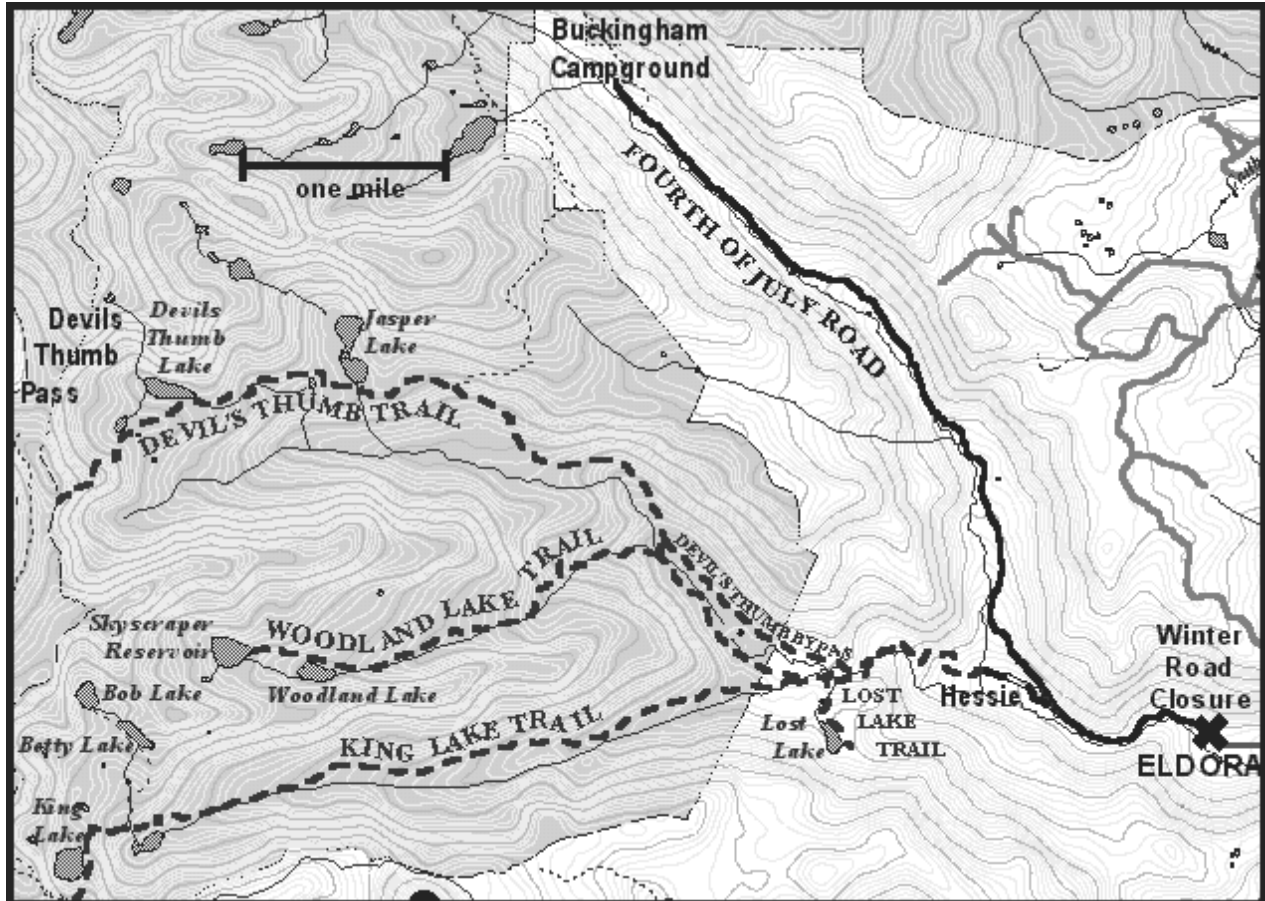
Trail Highlights

- From the trailhead, cross the footbridge and take the Devil's Thumb Trail #902, which climbs steeply for about a ½-mile on an old road.
- Do not take the Devil's Thumb Bypass, which turns right (north) in 0.8 miles, just before the bridge. This trail does not pass the Lost Lake Trail junction. Instead, cross the bridge and stay on the main Devil's Thumb Trail.
- It is 1.1 miles from the trailhead to the Lost Lake Trail junction. Turn left (south) following signs for Lost Lake Trail #813. The lake is up another ½-mile on a good trail.
- Camping is allowed at one of the eight first-come, first-served campsites around the lake.

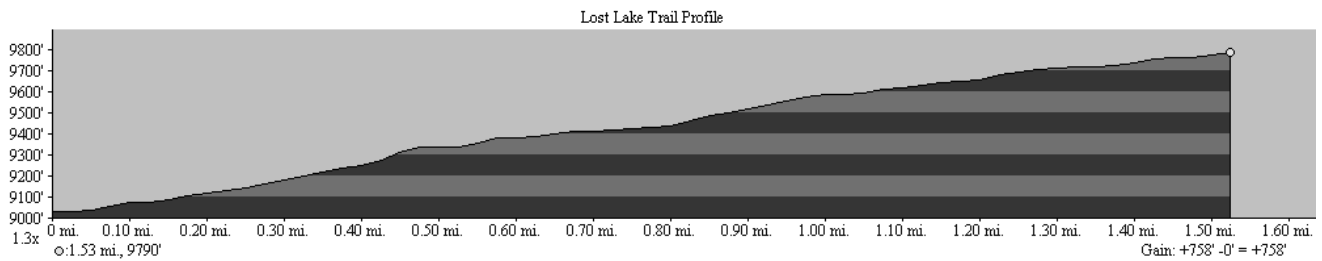
Important Information

- Lost Lake is located outside of the Indian Peaks Wilderness Area. Therefore, wilderness regulations do not apply: permits are not required for camping and campfires are allowed.
- CAMPING AT LOST LAKE IS LIMITED TO DESIGNATED CAMPSITES ONLY.
- If you are planning to build a campfire during the summer months, it is advisable to contact the Boulder Ranger District (303-541-2500) before your trip in regards to possible fire bans.
- The Hessie Trailhead may not be accessible by vehicle during the winter months.

Trail Map & Profile



This map is intended as a general guide only and not for actual land navigation.



For More Information:

Boulder Ranger District
2140 Yarmouth Avenue
Boulder, CO 80301
(303) 541-2500

USDA is an equal opportunity provider and employer.