

### Legend

- - - Existing Open Road

#### ----- Existing Motorized Trails

**Alt A**

**86 mgmt area (closest revised plan MA)**

 8A (1.1) Pristine Wilderness

 8B (1.1) Primitive Wilderness

8C (1.1) Semiprimitive Wilderness

8E (1.1A) Glacier Addition to Fitzpatrick

### 3A (1.3) Semiprimitive Nonmotorized Rec

10D (1.5A) Clarks Fork Wild River

 10E (1.6A) High Lakes WSA

10F (1.6B) Dunoir SMU

10A (2.3) Proposed RNA

10ALC (2.2A) Line Creek RNA

10G (3.1A) Swamp Lake SIA

2A (3.3A) Semiprimitive Motorized Rec

2B (4.2) Rural/Roaded Natural Rec

10H (4.5A) Kirwin

7E (5.1) Wood Fiber Production

 4B (5.4) Mgmt Indicator Species

5A (5.4) Big Game Winter Rng (non forested)

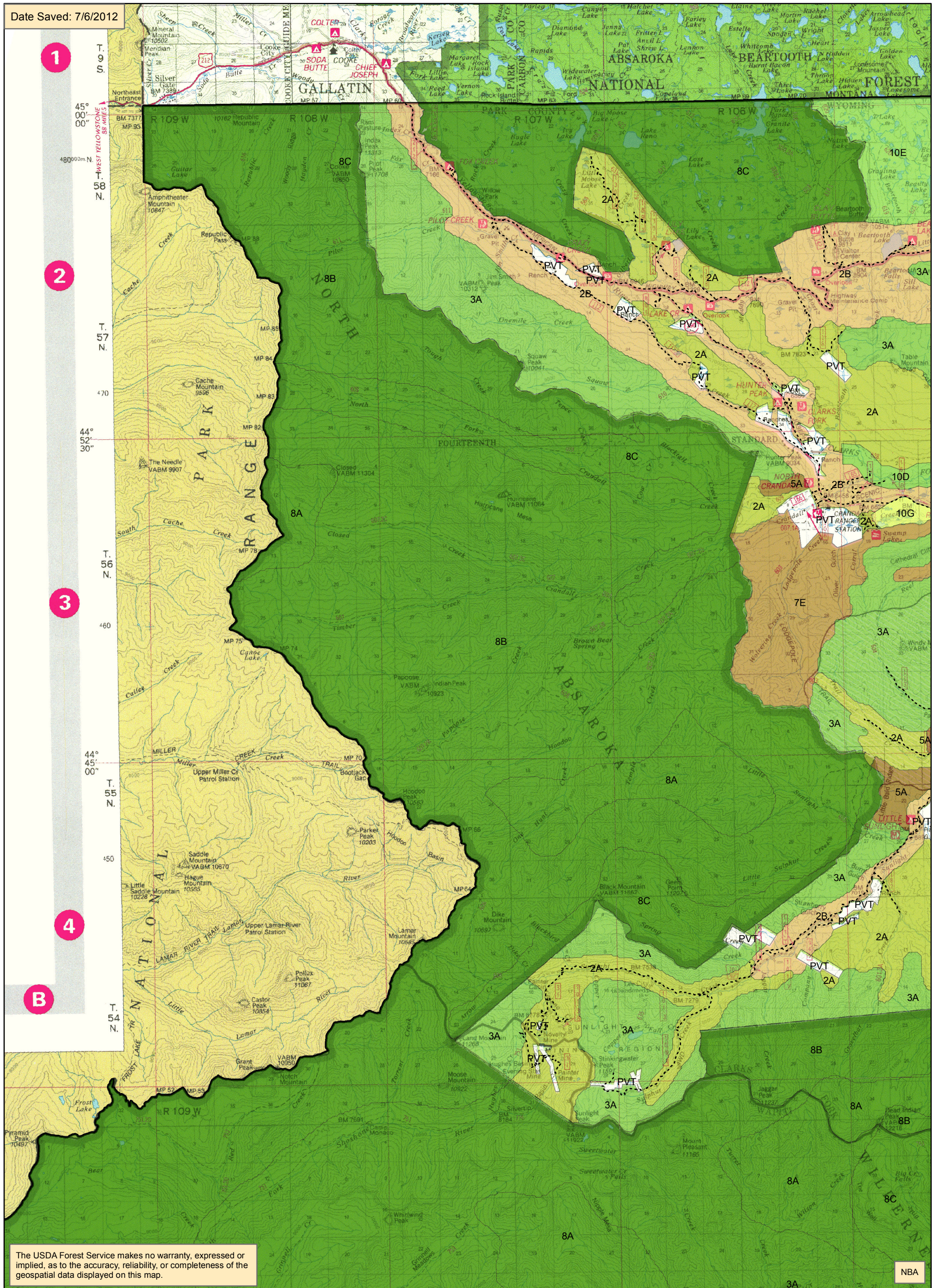
5B (5.4) Big Game Winter Rng (forested)

9A (4.2) Riparian Area Mgmt.

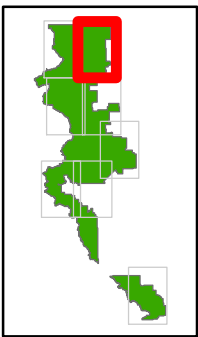
9E (4.2) Water Impoundment Site

9E (3.3A) Riparian Area Mgmt.

**Map 1 (pg 1 of 8)  
alternative A  
management areas  
west Clarks Fork**







Legend

- Existing Open Road
- Existing Motorized Trails

Alt A

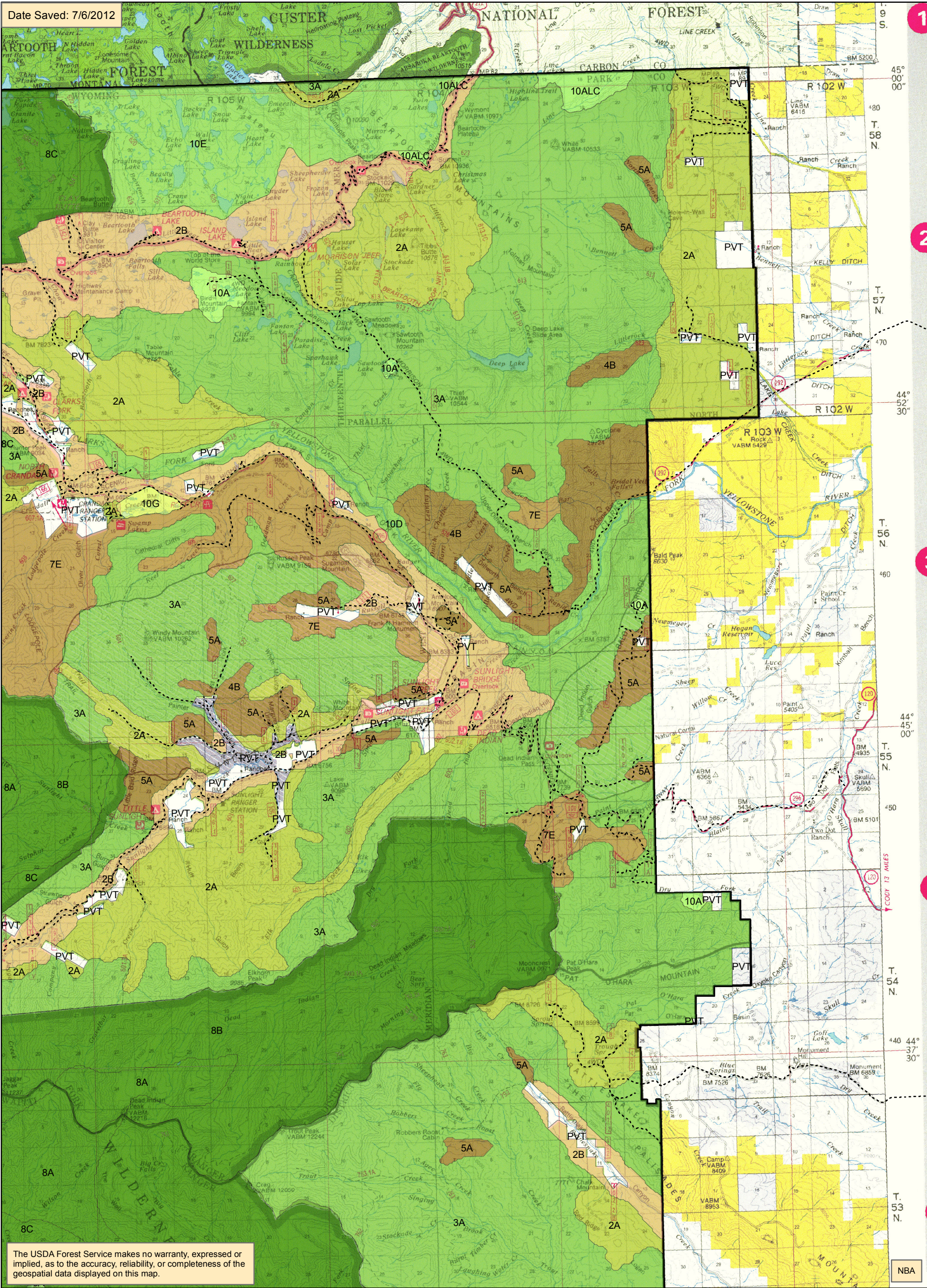
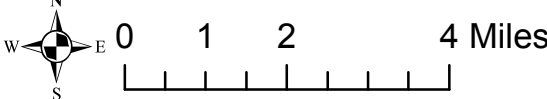
86 mgmt area (closest revised plan MA)

- 8A (1.1) Pristine Wilderness
- 8B (1.1) Primitive Wilderness
- 8C (1.1) Semiprimitive Wilderness
- 8E (1.1A) Glacier Addition to Fitzpatrick
- 3A (1.3) Semiprimitive Nonmotorized Rec

- 10D (1.5A) Clarks Fork Wild River
- 10E (1.6A) High Lakes WSA
- 10F (1.6B) Dunoir SMU
- 10A (2.3) Proposed RNA
- 10ALC (2.2A) Line Creek RNA
- 10G (3.1A) Swamp Lake SIA
- 2A (3.3A) Semiprimitive Motorized Rec
- 2B (4.2) Rural/Roaded Natural Rec

- 10H (4.5A) Kirwin
- 7E (5.1) Wood Fiber Production
- 4B (5.4) Mgmt Indicator Species
- 5A (5.4) Big Game Winter Rng (non forested)
- 5B (5.4) Big Game Winter Rng (forested)
- 9A (4.2) Riparian Area Mgmt.
- 9E (4.2) Water Impoundment Site
- 9E (3.3A) Riparian Area Mgmt.

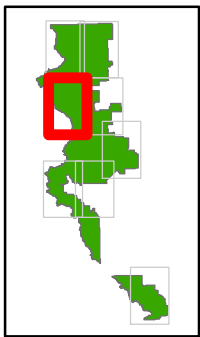
Map 1 (pg 2 of 8)  
alternative A  
management areas  
east Clarks Fork



The USDA Forest Service makes no warranty, expressed or implied, as to the accuracy, reliability, or completeness of the geospatial data displayed on this map.

NBA





### Legend

- - - Existing Open Road

#### ----- Existing Motorized Trails

**Alt A**

**86 mgmt area (closest revised plan MA)**

 8A (1.1) Pristine Wilderness


 8B (1.1) Primitive Wilderness

## 8C (1.1) Semiprimitive Wilderness

8E (1.1A) Glacier Addition to Fitzpatrick

3A (1.3) Semiprimitive Nonmotorized Rec

10D (1.5A) Clarks Fork Wild River

 10E (1.6A) High Lakes WSA

10F (1.6B) Dunoir SMU

10A (2.3) Proposed RNA

10ALC (2.2A) Line Creek RNA

10G (3.1A) Swamp Lake SIA

2A (3.3A) Semiprimitive Motoriz

2B (4.2) Rural/Roaded Natural Rec

10H (4.5A) Kirwin

7E (5.1) Wood Fiber Production

4B (5.4) Mgmt Indicator Species

5A (5.4) Big Game Winter Rng (non forested)

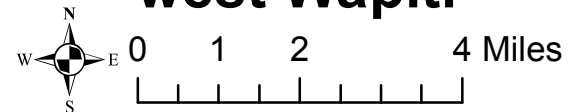
 5B (5.4) Big Game Winter Rng (forested)

 9A (4.2) Riparian Area Mgmt.

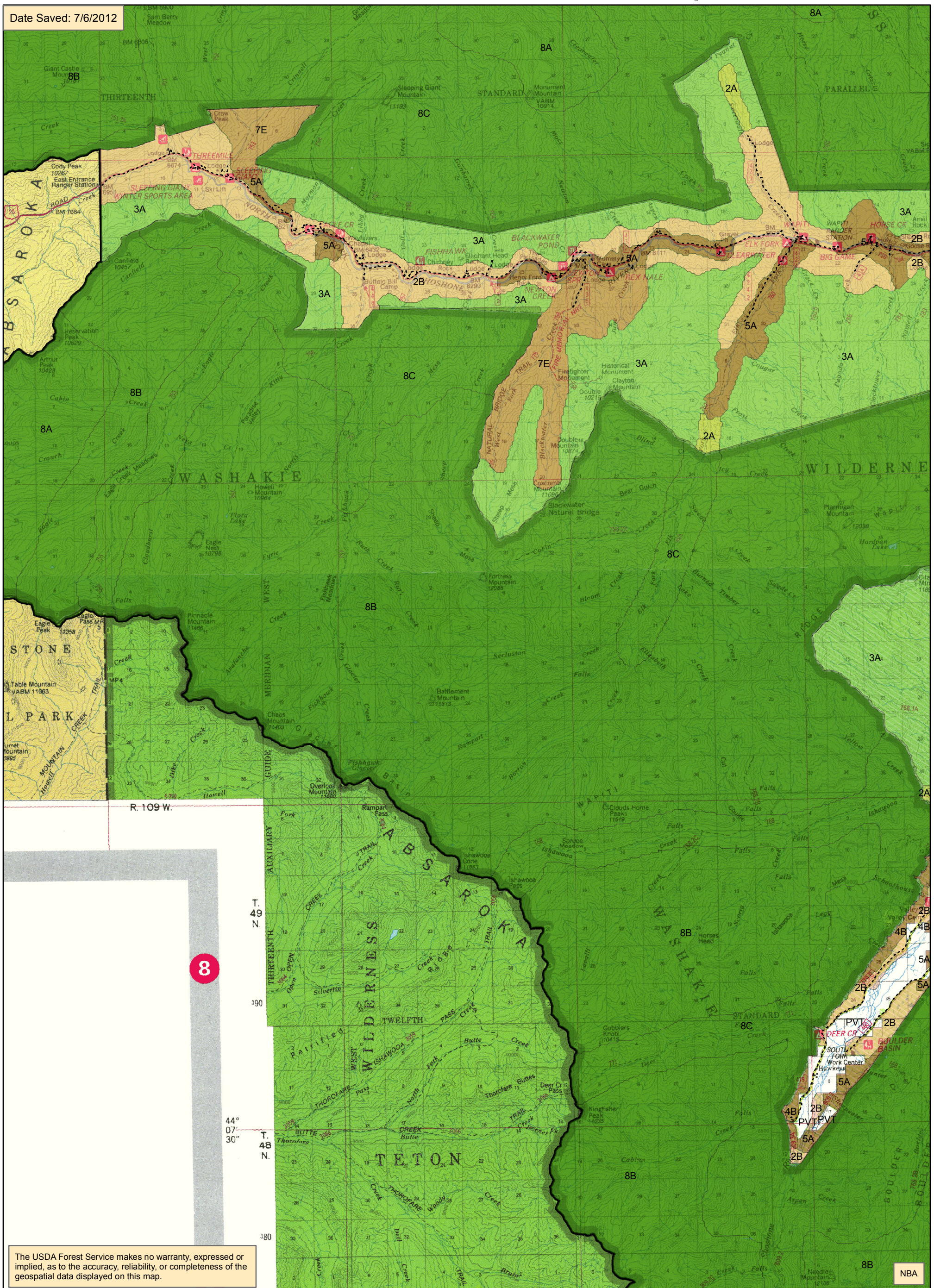
9E (4.2) Water Impoundment Site

9E (3.3A) Riparian Area Mgmt.

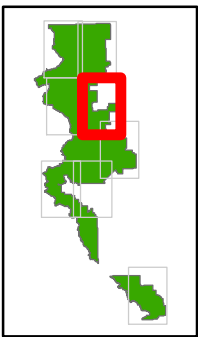
**Map 1 (pg 3 of 8)  
alternative A  
management areas  
west Wapiti**



Date Saved: 7/6/2012







Legend

--- Existing Open Road

--- Existing Motorized Trails

Alt A

86 mgmt area (closest revised plan MA)

8A (1.1) Pristine Wilderness

8B (1.1) Primitive Wilderness

8C (1.1) Semiprimitive Wilderness

8E (1.1A) Glacier Addition to Fitzpatrick

3A (1.3) Semiprimitive Nonmotorized Rec

10D (1.5A) Clarks Fork Wild River

10E (1.6A) High Lakes WSA

10F (1.6B) Dunoir SMU

10A (2.3) Proposed RNA

10ALC (2.2A) Line Creek RNA

10G (3.1A) Swamp Lake SIA

2A (3.3A) Semiprimitive Motorized Rec

2B (4.2) Rural/Roaded Natural Rec

10H (4.5A) Kirwin

7E (5.1) Wood Fiber Production

4B (5.4) Mgmt Indicator Species

5A (5.4) Big Game Winter Rng (non forested)

5B (5.4) Big Game Winter Rng (forested)

9A (4.2) Riparian Area Mgmt.

9E (4.2) Water Impoundment Site

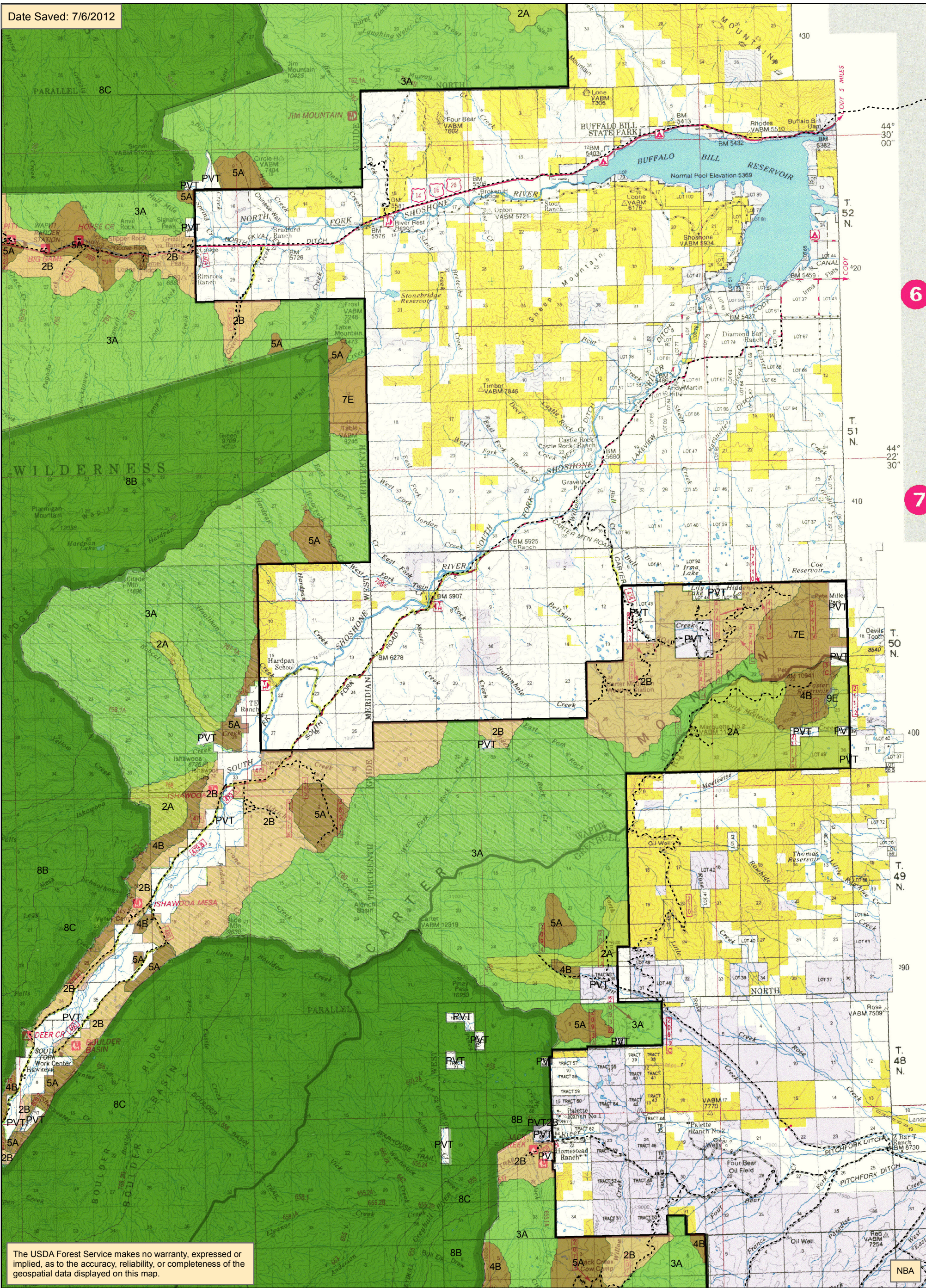
9E (3.3A) Riparian Area Mgmt.

# Map 1 (pg 4 of 8) alternative A management areas east Wapiti



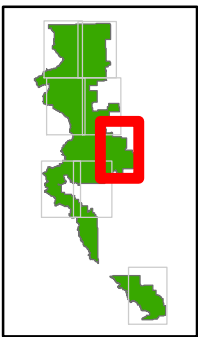
0 1 2 4 Miles

Date Saved: 7/6/2012



The USDA Forest Service makes no warranty, expressed or implied, as to the accuracy, reliability, or completeness of the geospatial data displayed on this map.





Legend

--- Existing Open Road

--- Existing Motorized Trails

Alt A

86 mgmt area (closest revised plan MA)

8A (1.1) Pristine Wilderness

8B (1.1) Primitive Wilderness

8C (1.1) Semiprimitive Wilderness

8E (1.1A) Glacier Addition to Fitzpatrick

3A (1.3) Semiprimitive Nonmotorized Rec

10D (1.5A) Clarks Fork Wild River

10E (1.6A) High Lakes WSA

10F (1.6B) Dunoir SMU

10A (2.3) Proposed RNA

10ALC (2.2A) Line Creek RNA

10G (3.1A) Swamp Lake SIA

2A (3.3A) Semiprimitive Motorized Rec

2B (4.2) Rural/Roaded Natural Rec

10H (4.5A) Kirwin

7E (5.1) Wood Fiber Production

4B (5.4) Mgmt Indicator Species

5A (5.4) Big Game Winter Rng (non forested)

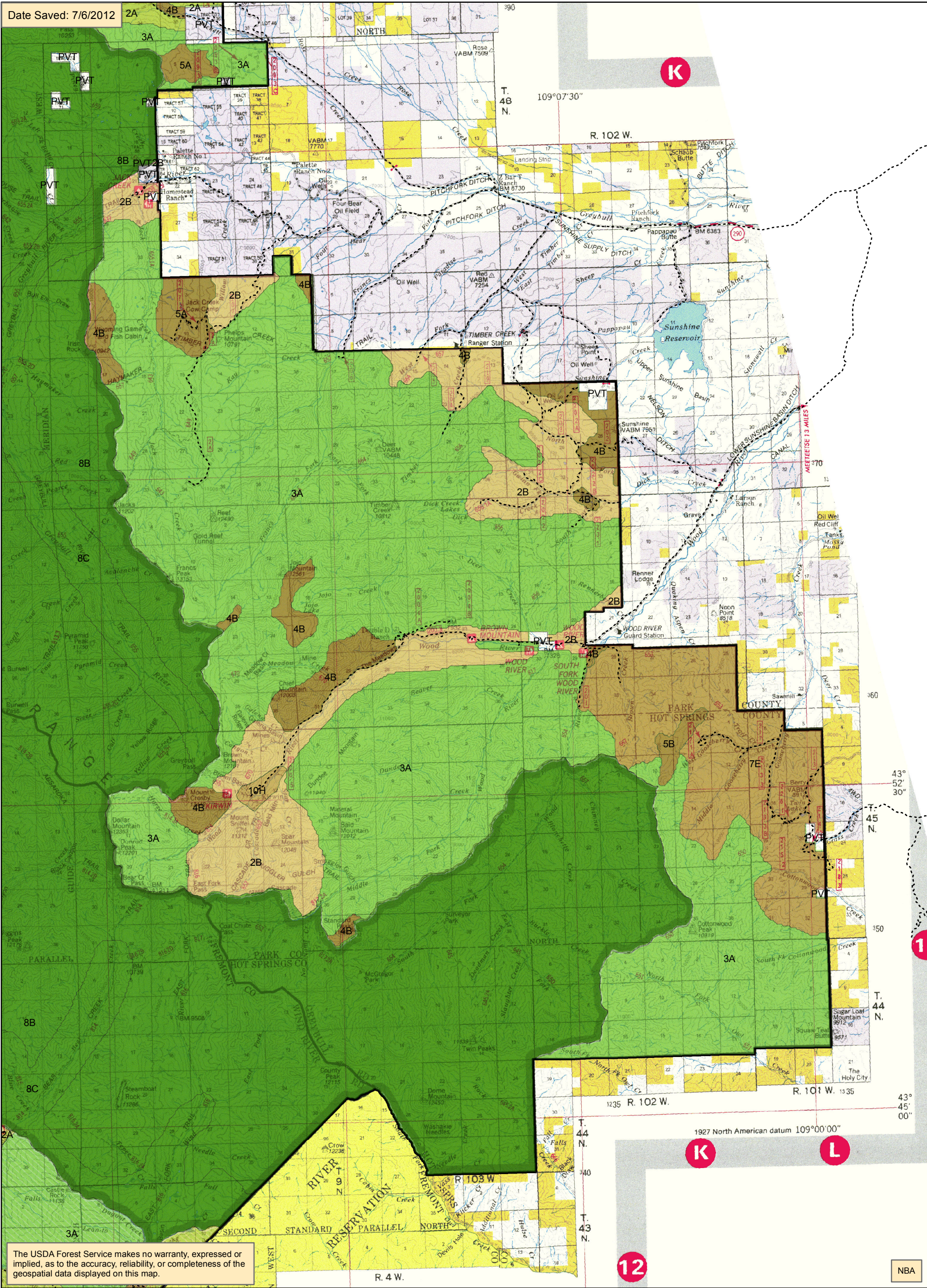
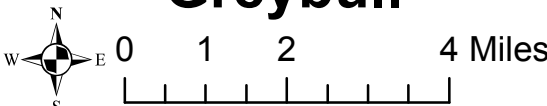
5B (5.4) Big Game Winter Rng (forested)

9A (4.2) Riparian Area Mgmt.

9E (4.2) Water Impoundment Site

9E (3.3A) Riparian Area Mgmt.

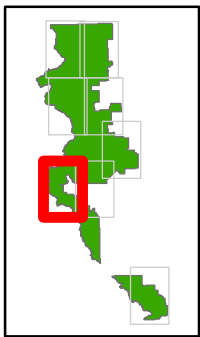
# Map 1 (pg 5 of 8) alternative A management areas Greybull



The USDA Forest Service makes no warranty, expressed or implied, as to the accuracy, reliability, or completeness of the geospatial data displayed on this map.

NBA





### Legend

- - - Existing Open Road

----- Existing Motorized Trails

**Alt A**

**86 mgmt area (closest revised plan MA)**

 8A (1.1) Pristine Wilderness

 8B (1.1) Primitive Wilderness

## 8C (1.1) Semiprimitive Wilderness

8E (1.1A) Glacier Addition to Fitzpatrick

3A (1.3) Semiprimitive Nonmotorized Rec

10D (1.5A) Clarks Fork Wild River

10E (1.6A) High Lakes WSA

10F (1.6B) Dunoir SMU

### 10A (2.3) Proposed RNA

10ALC (2.2A) Line Creek RNA

10G (3.1A) Swamp Lake SIA

## 2A (3.3A) Semiprimitive Motorized Rec


2B (4.2) Rural/Roaded Natural Rec

10H (4.5A) Kirwin


7E (5.1) Wood Fiber Production

 4B (5.4) Mgmt Indicator Species

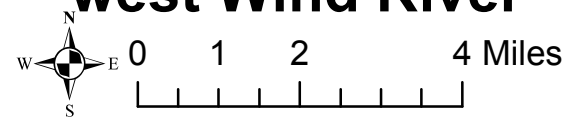
5A (5.4) Big Game Winter Rng (non forested)

 5B (5.4) Big Game Winter Rng (forested)

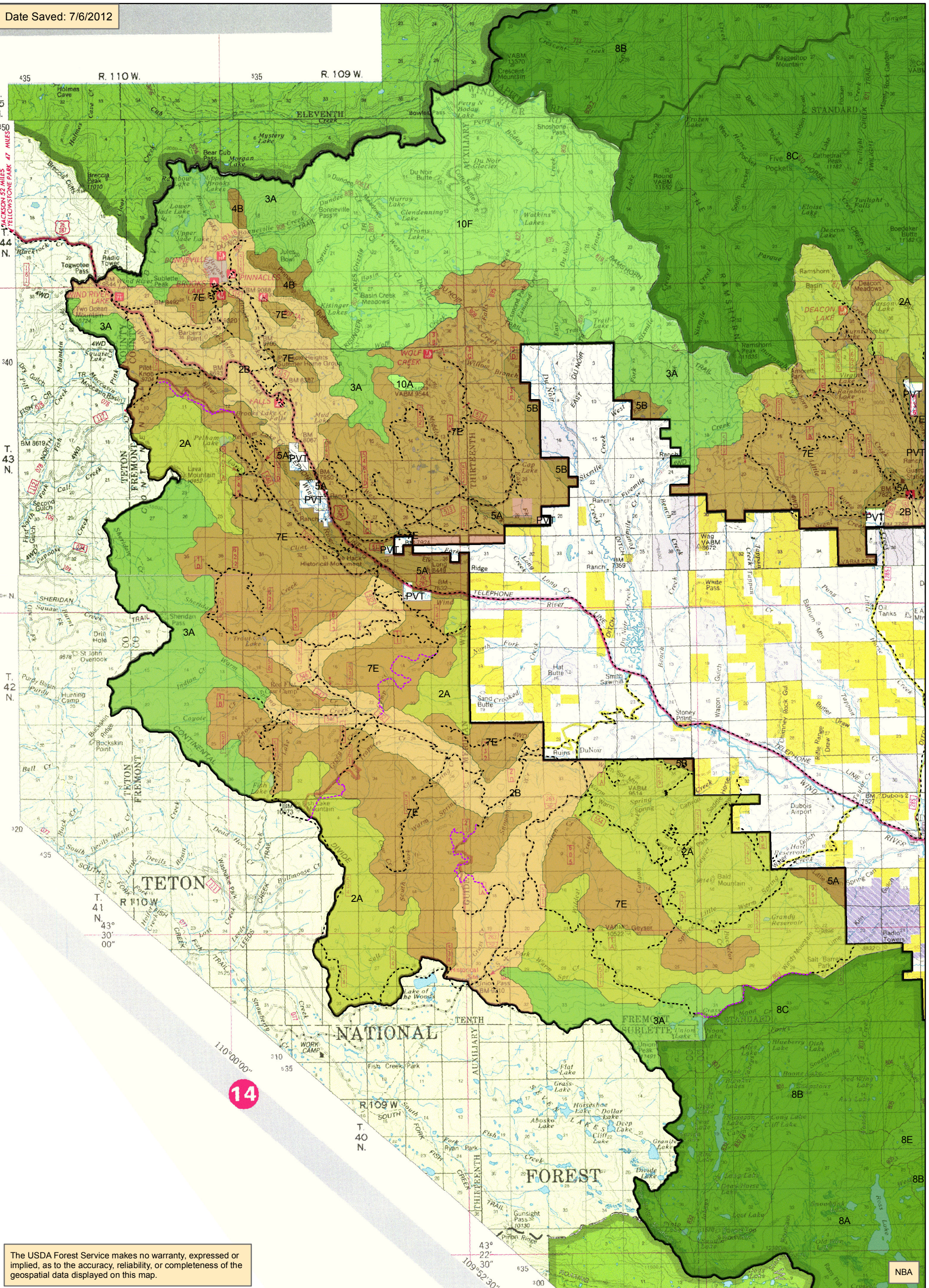
 9A (4.2) Riparian Area Mgmt.

 9E (4.2) Water Impoundment Site

 9E (3.3A) Riparian Area Mgmt.



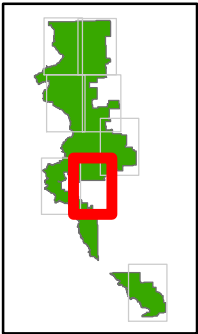
Date Saved: 7/6/2012



The USDA Forest Service makes no warranty, expressed or implied, as to the accuracy, reliability, or completeness of the geospatial data displayed on this map.

IBA





Legend

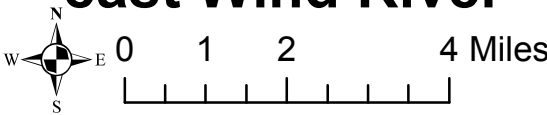
- Existing Open Road
- Existing Motorized Trails

Alt A

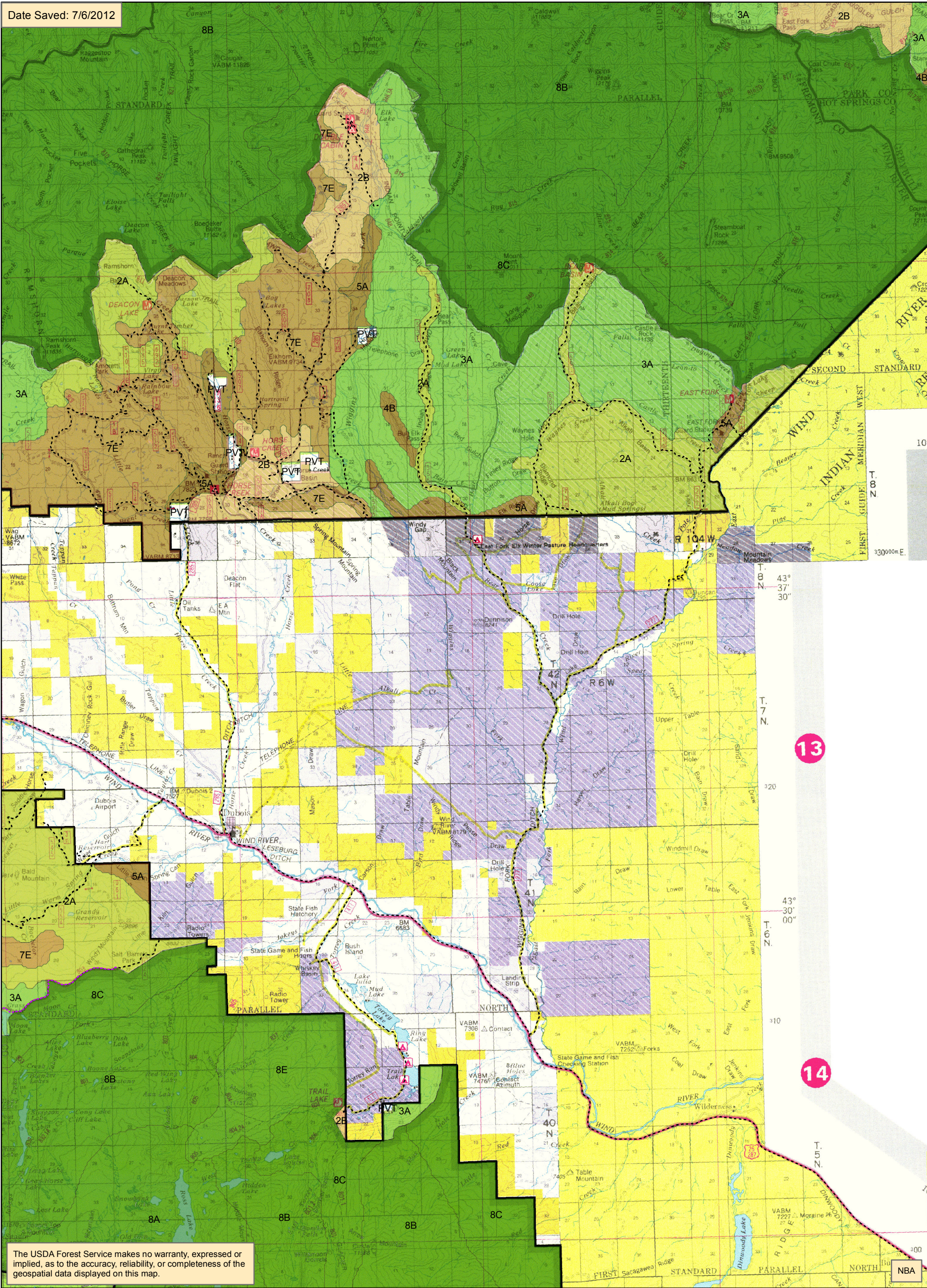
86 mgmt area (closest revised plan MA)

- 8A (1.1) Pristine Wilderness
- 8B (1.1) Primitive Wilderness
- 8C (1.1) Semiprimitive Wilderness
- 8E (1.1A) Glacier Addition to Fitzpatrick
- 3A (1.3) Semiprimitive Nonmotorized Rec
- 10D (1.5A) Clarks Fork Wild River
- 10E (1.6A) High Lakes WSA
- 10F (1.6B) Dunoir SMU
- 10A (2.3) Proposed RNA
- 10ALC (2.2A) Line Creek RNA
- 10G (3.1A) Swamp Lake SIA
- 2A (3.3A) Semiprimitive Motorized Rec
- 2B (4.2) Rural/Roaded Natural Rec
- 10H (4.5A) Kirwin
- 7E (5.1) Wood Fiber Production
- 4B (5.4) Mgmt Indicator Species
- 5A (5.4) Big Game Winter Rng (non forested)
- 5B (5.4) Big Game Winter Rng (forested)
- 9A (4.2) Riparian Area Mgmt.
- 9E (4.2) Water Impoundment Site
- 9E (3.3A) Riparian Area Mgmt.

Map 1 (pg 7 of 8)  
alternative A  
management areas  
east Wind River



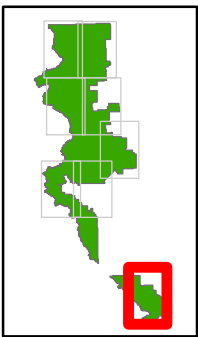
Date Saved: 7/6/2012



The USDA Forest Service makes no warranty, expressed or implied, as to the accuracy, reliability, or completeness of the geospatial data displayed on this map.

NBA





Legend

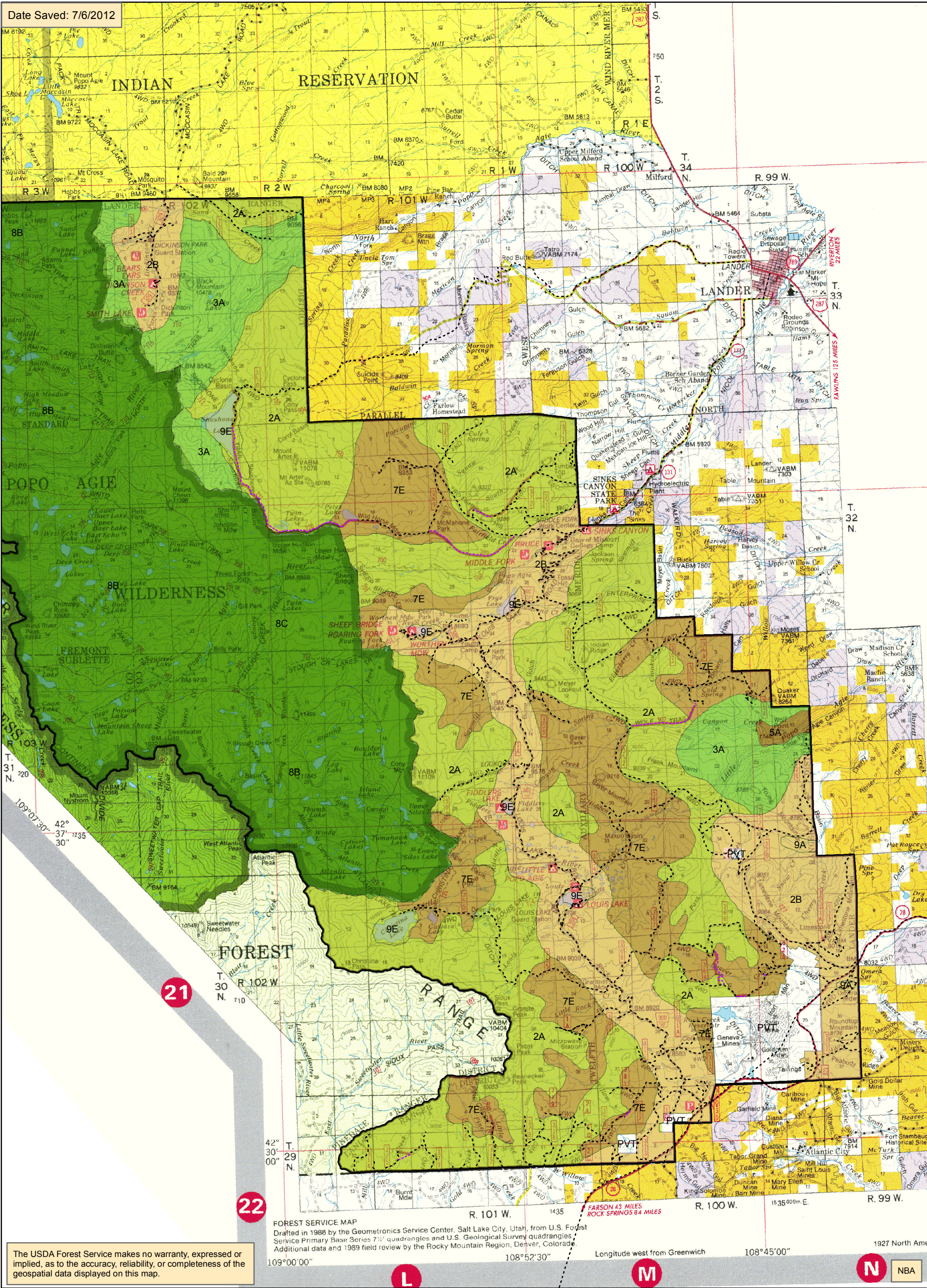
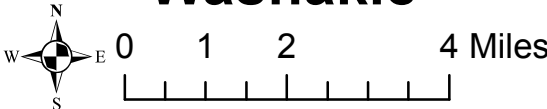
- Existing Open Road
- Existing Motorized Trails

Alt A

86 mgmt area (closest revised plan MA)

- 8A (1.1) Pristine Wilderness
- 8B (1.1) Primitive Wilderness
- 8C (1.1) Semiprimitive Wilderness
- 8E (1.1A) Glacier Addition to Fitzpatrick
- 3A (1.3) Semiprimitive Nonmotorized Rec
- 10D (1.5A) Clarks Fork Wild River
- 10E (1.6A) High Lakes WSA
- 10F (1.6B) Dunoir SMU
- 10A (2.3) Proposed RNA
- 10ALC (2.2A) Line Creek RNA
- 10G (3.1A) Swamp Lake SIA
- 2A (3.3A) Semiprimitive Motorized Rec
- 2B (4.2) Rural/Roaded Natural Rec
- 10H (4.5A) Kirwin
- 7E (5.1) Wood Fiber Production
- 4B (5.4) Mgmt Indicator Species
- 5A (5.4) Big Game Winter Rng (non forested)
- 5B (5.4) Big Game Winter Rng (forested)
- 9A (4.2) Riparian Area Mgmt.
- 9E (4.2) Water Impoundment Site
- 9E (3.3A) Riparian Area Mgmt.

Map 1 (pg 8 of 8)  
alternative A  
management areas  
Washakie



FOREST SERVICE MAP  
Drafted in 1988 by the Geometrics Service Center, Salt Lake City, Utah, from U.S. Forest Service Primary Base Series 7 1/2" quadrangles and U.S. Geological Survey quadrangles. Additional data and 1989 field review by the Rocky Mountain Region, Denver, Colorado.

The USDA Forest Service makes no warranty, expressed or implied, as to the accuracy, reliability, or completeness of the geospatial data displayed on this map.

Longitude west from Greenwich 108°45'00" 1927 North America

L

M

N

NBA