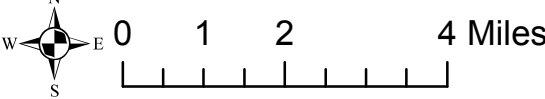


- Legend**

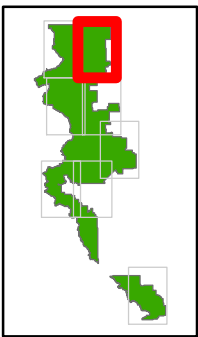
 - Existing Open Road
 - - - Existing Motorized Trails
 - Alt B management area**
 - 1.1 Wilderness
 - 1.1A Glacier Addition
 - 1.3 Back Cntry NonMotorized
 - 1.5A Clarks Fork Wild River
 - 1.6A High Lakes WSA
- 1.6B Dunoir SMU
 - 2.2A Line Creek RNA
 - 2.3 Proposed RNA
 - 3.1A Swamp Lake SIA
 - 3.1B Prpsd Little Popo Agie SIA
 - 3.1C Prpsd Sawtooth Peatbeads SIA
 - 3.3A Back Cntry Motorized
 - 3.3B Back Cntry Winter Motorized
 - 3.3C Back Cntry Summer Motorized
- 3.5 Back Cntry Rec & Restoration
 - 4.2 Travel Corridor
 - 4.3 Back Cntry Access Corridor
 - 4.5A Kirwin SIA
 - 5.1 Mngd Forest & Rangelands
 - 5.2 Public Water Supply
 - 5.4 Mngd Big Game Crucial Winter Rng
 - 8.2 Ski-based Resort

Map 2 (pg 1 of 8)
alternative B
management areas
west Clarks Fork



The USDA Forest Service makes no warranty, expressed or implied, as to the accuracy, reliability, or completeness of the geospatial data displayed on this map.

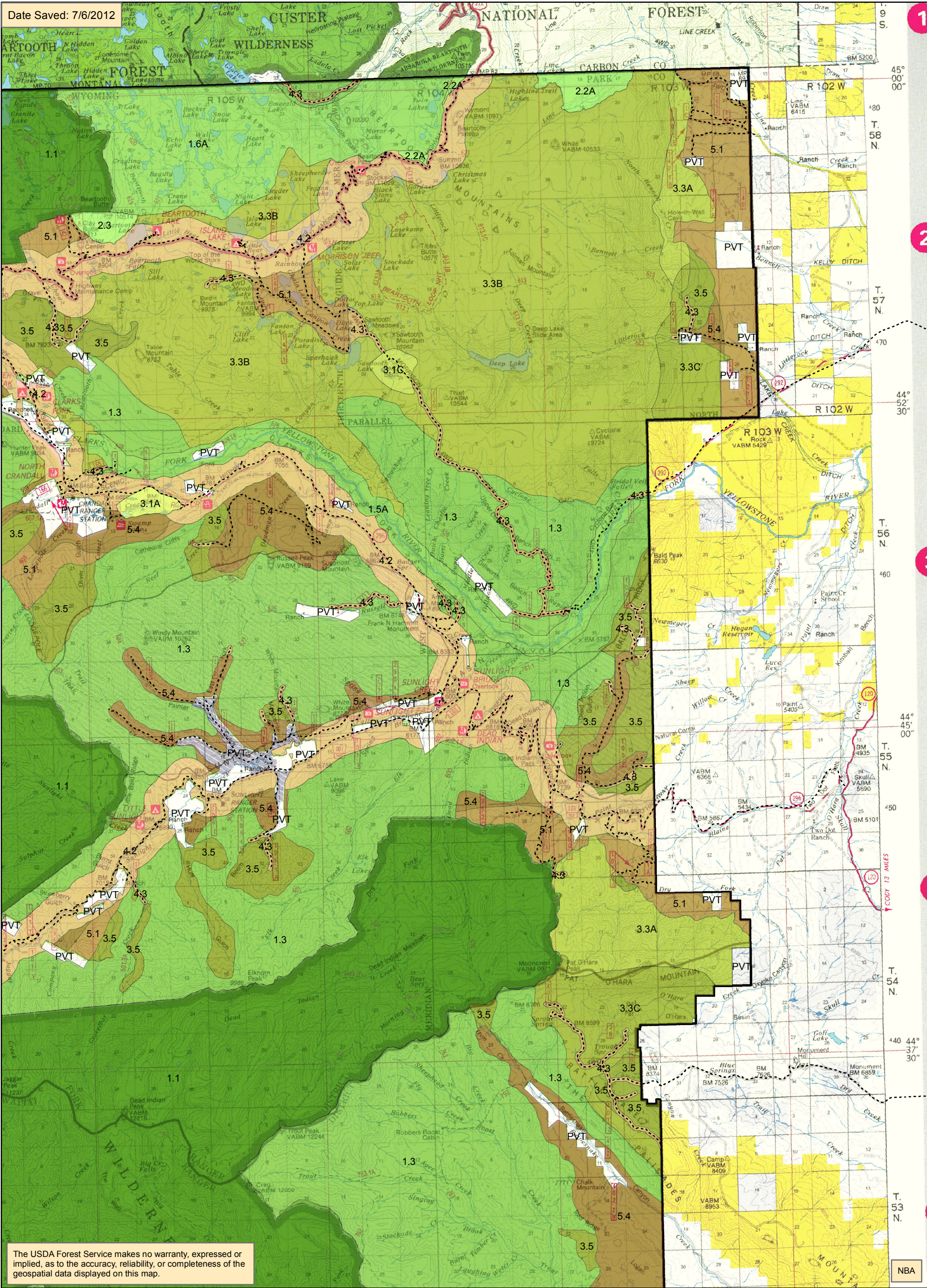
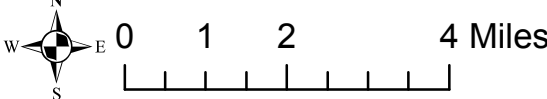
NBA



- Legend**

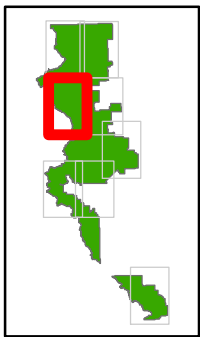
 - Existing Open Road
 - Existing Motorized Trails
 - Alt B management area**
 - 1.1 Wilderness
 - 1.1A Glacier Addition
 - 1.3 Back Cntry NonMotorized
 - 1.5A Clarks Fork Wild River
 - 1.6A High Lakes WSA
- 1.6B Dunoir SMU
 - 2.2A Line Creek RNA
 - 2.3 Proposed RNA
 - 3.1A Swamp Lake SIA
 - 3.1B Prpsd Little Popo Agie SIA
 - 3.1C Prpsd Sawtooth Peatbeads SIA
 - 3.3A Back Cntry Motorized
 - 3.3B Back Cntry Winter Motorized
 - 3.3C Back Cntry Summer Motorized
- 3.5 Back Cntry Rec & Restoration
 - 4.2 Travel Corridor
 - 4.3 Back Cntry Access Corridor
 - 4.5A Kirwin SIA
 - 5.1 Mngd Forest & Rangelands
 - 5.2 Public Water Supply
 - 5.4 Mngd Big Game Crucial Winter Rng
 - 8.2 Ski-based Resort

Map 2 (pg 2 of 8)
alternative B
management areas
east Clarks Fork

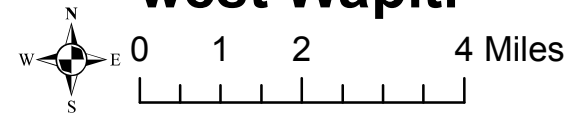


The USDA Forest Service makes no warranty, expressed or implied, as to the accuracy, reliability, or completeness of the geospatial data displayed on this map.

NBA



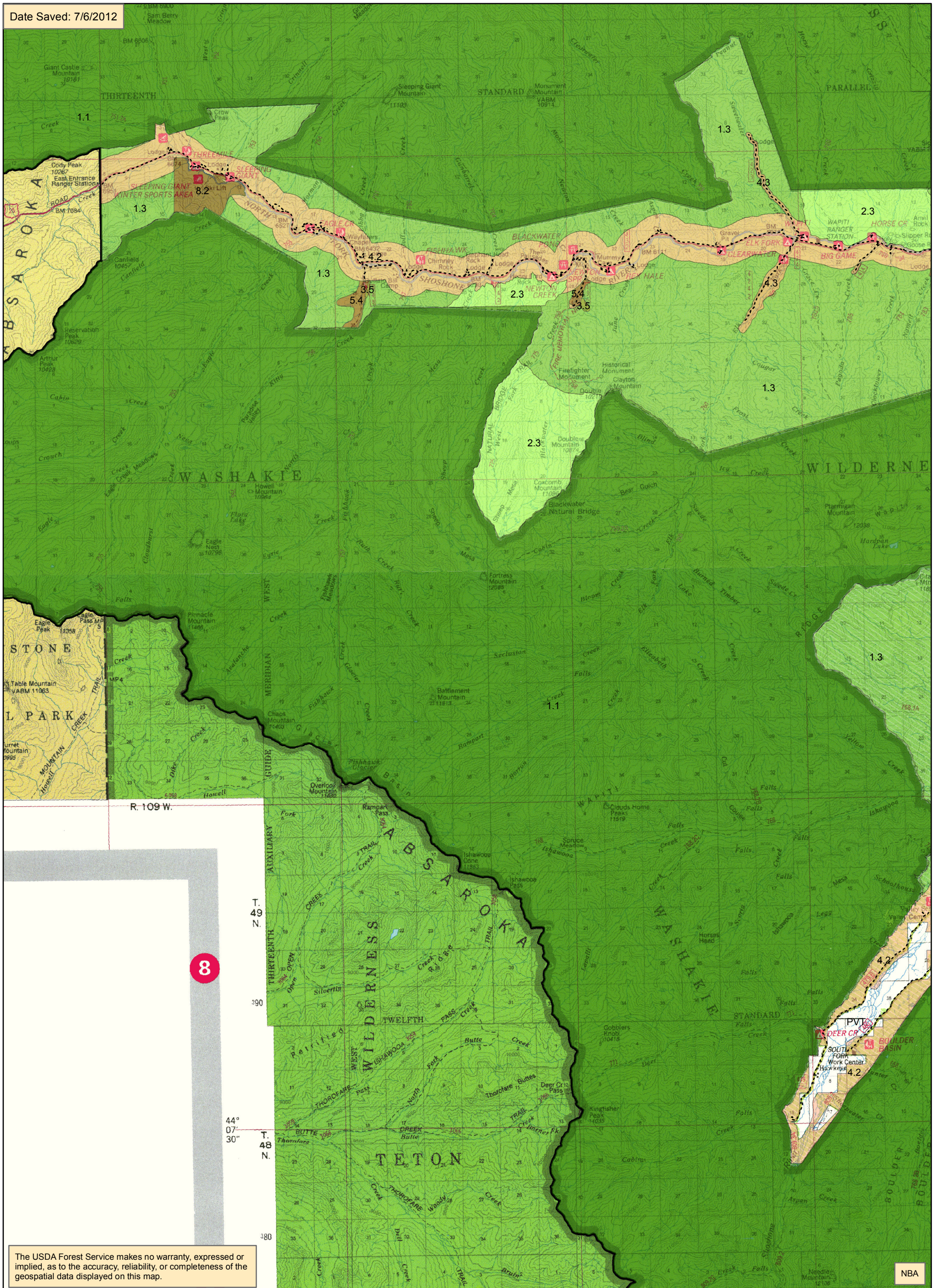
**Map 2 (pg 3 of 8)
alternative B
management areas
west Wapiti**

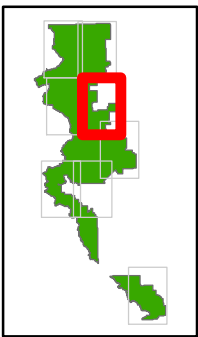


Legend

- | | | |
|-------------------------------|-----------------------------------|--------------------------------------|
| --- Existing Open Road | 1.6B Dunoir SMU | 3.5 Back Cntry Rec & Restoration |
| --- Existing Motorized Trails | 2.2A Line Creek RNA | 4.2 Travel Corridor |
| Alt B | 2.3 Proposed RNA | 4.3 Back Cntry Access Corridor |
| management area | 3.1A Swamp Lake SIA | 4.5A Kirwin SIA |
| 1.1 Wilderness | 3.1B Prpsd Little Popo Agie SIA | 5.1 Mngd Forest & Rangelands |
| 1.1A Glacier Addition | 3.1C Prpsd Sawtooth Peatbeads SIA | 5.2 Public Water Supply |
| 1.3 Back Cntry NonMotorized | 3.3A Back Cntry Motorized | 5.4 Mngd Big Game Crucial Winter Rng |
| 1.5A Clarks Fork Wild River | 3.3B Back Cntry Winter Motorized | 8.2 Ski-based Resort |
| 1.6A High Lakes WSA | 3.3C Back Cntry Summer Motorized | |

Date Saved: 7/6/2012





- Legend**

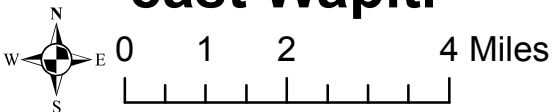
--- Existing Open Road

--- Existing Motorized Trails

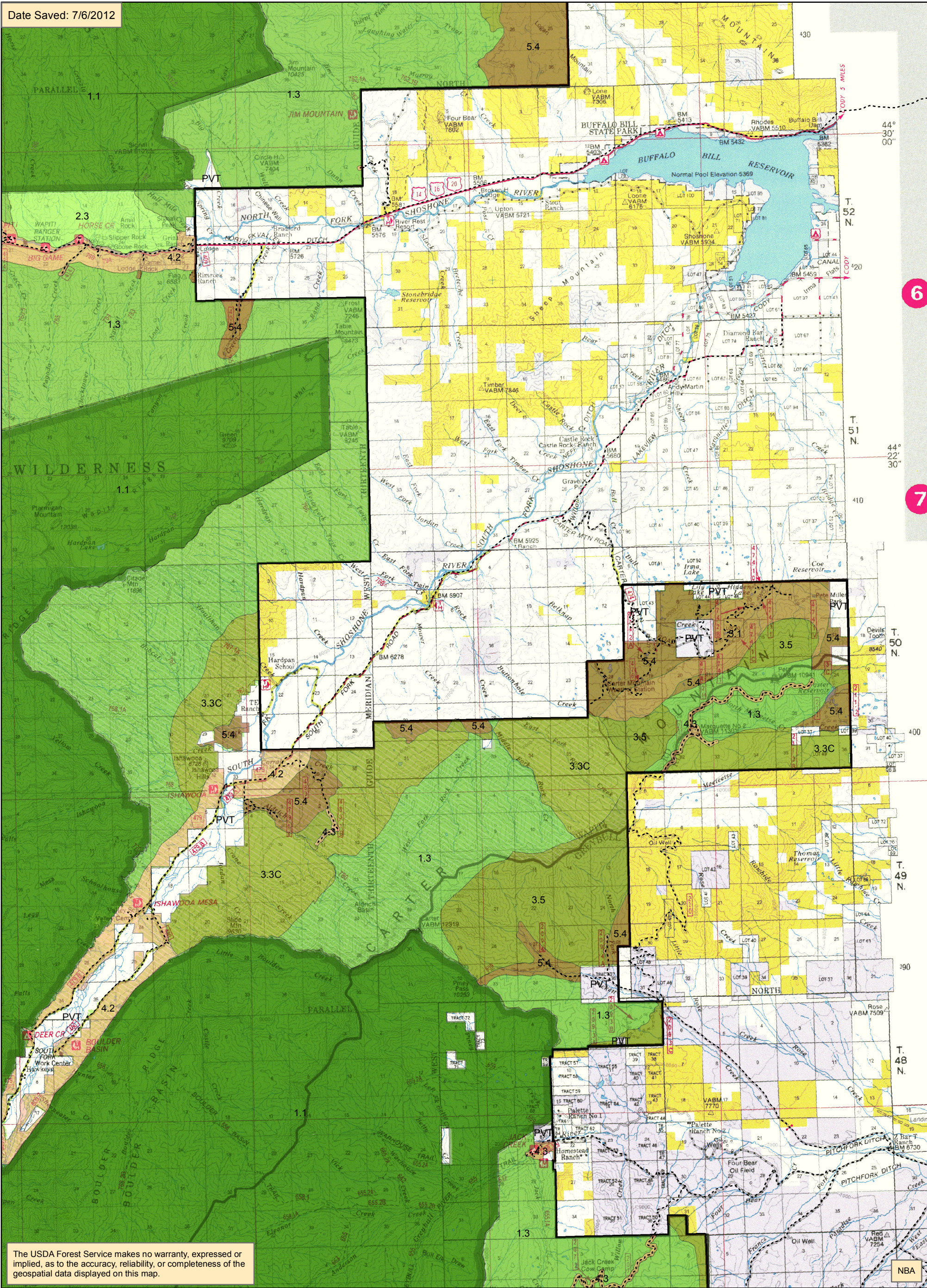
Alt B management area

 - 1.1 Wilderness
 - 1.1A Glacier Addition
 - 1.3 Back Cntry NonMotorized
 - 1.5A Clarks Fork Wild River
 - 1.6A High Lakes WSA
- 1.6B Dunoir SMU
 - 2.2A Line Creek RNA
 - 2.3 Proposed RNA
 - 3.1A Swamp Lake SIA
 - 3.1B Prpsd Little Popo Agie SIA
 - 3.1C Prpsd Sawtooth Peatbeads SIA
 - 3.3A Back Cntry Motorized
 - 3.3B Back Cntry Winter Motorized
 - 3.3C Back Cntry Summer Motorized
- 3.5 Back Cntry Rec & Restoration
 - 4.2 Travel Corridor
 - 4.3 Back Cntry Access Corridor
 - 4.5A Kirwin SIA
 - 5.1 Mngd Forest & Rangelands
 - 5.2 Public Water Supply
 - 5.4 Mngd Big Game Crucial Winter Rng
 - 8.2 Ski-based Resort

Map 2 (pg 4 of 8)
alternative B
management areas
east Wapiti



Date Saved: 7/6/2012

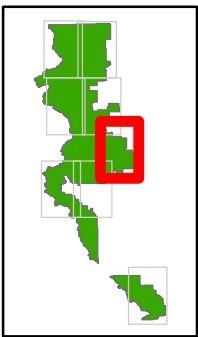


The USDA Forest Service makes no warranty, expressed or implied, as to the accuracy, reliability, or completeness of the geospatial data displayed on this map.

6

7

NBA



- Legend**

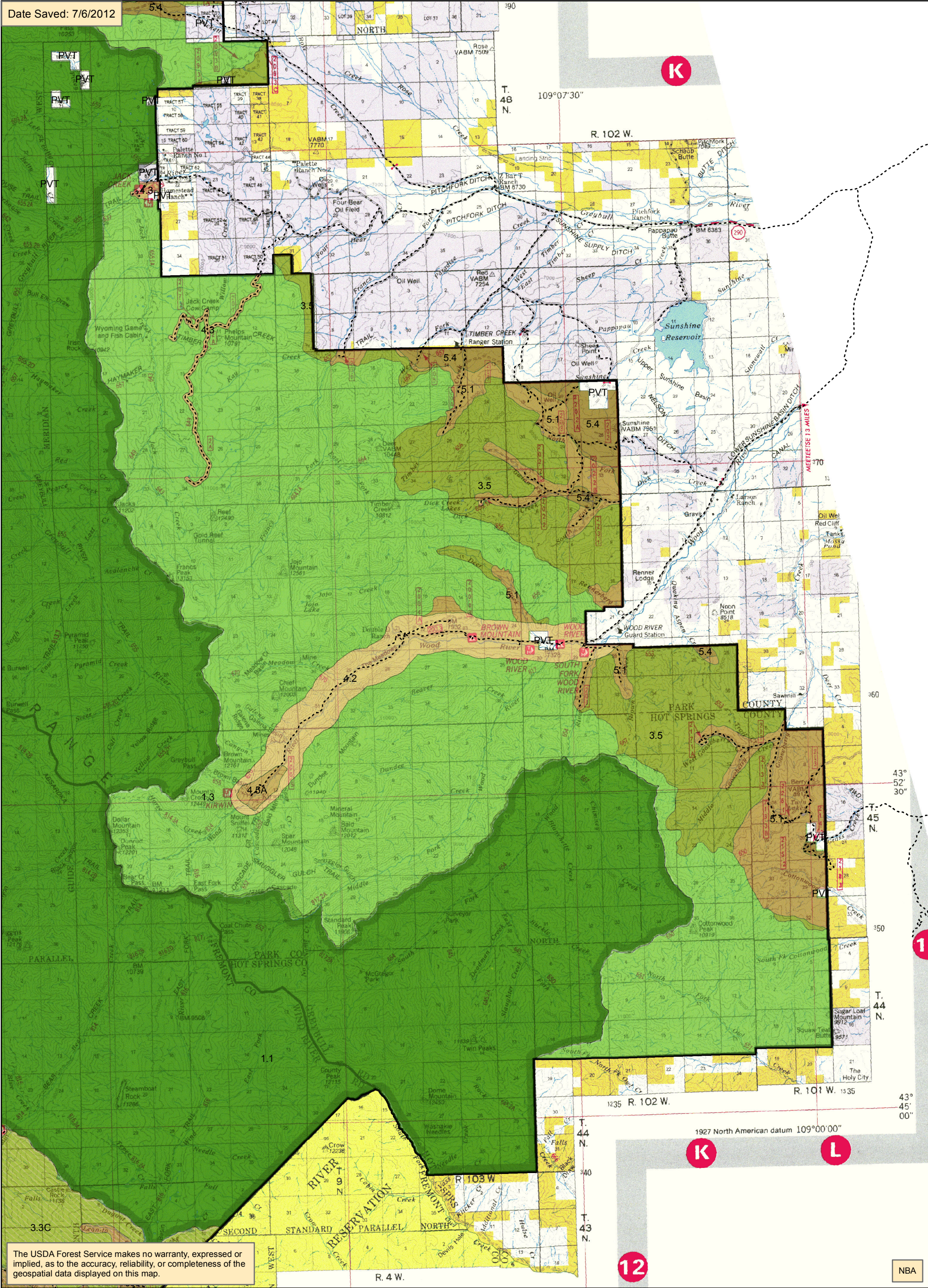
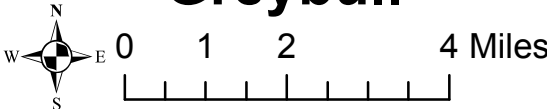
--- Existing Open Road

--- Existing Motorized Trails

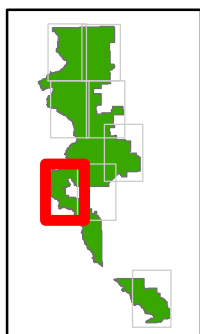
Alt B management area

 - 1.1 Wilderness
 - 1.1A Glacier Addition
 - 1.3 Back Cntry NonMotorized
 - 1.5A Clarks Fork Wild River
 - 1.6A High Lakes WSA
- 1.6B Dunoir SMU
 - 2.2A Line Creek RNA
 - 2.3 Proposed RNA
 - 3.1A Swamp Lake SIA
 - 3.1B Prpsd Little Popo Agie SIA
 - 3.1C Prpsd Sawtooth Peatbeads SIA
 - 3.3A Back Cntry Motorized
 - 3.3B Back Cntry Winter Motorized
 - 3.3C Back Cntry Summer Motorized
- 3.5 Back Cntry Rec & Restoration
 - 4.2 Travel Corridor
 - 4.3 Back Cntry Access Corridor
 - 4.5A Kirwin SIA
 - 5.1 Mngd Forest & Rangelands
 - 5.2 Public Water Supply
 - 5.4 Mngd Big Game Crucial Winter Rng
 - 8.2 Ski-based Resort

Map 2 (pg 5 of 8)
alternative B
management areas
Greybull



The USDA Forest Service makes no warranty, expressed or implied, as to the accuracy, reliability, or completeness of the geospatial data displayed on this map.



Legend

- - - Existing Open Road

----- Existing Motorized Trails

Alt B

management area

1.1 Wilderness

1.1A Glacier Addition

1.3 Back Cntry NonMotorize

1.5A Clarks Fork Wild River

 1.6A High Lakes WSA

1.6B Dunoir SMU

2.2A Line Creek RNA

2.3 Proposed RNA

3.1A Swamp Lake SIA

3.1B Prpsd Little Popo Agie SIA

3.1C Prpsd Sawtooth Peatbeads SIA

3.3A Back Cntry Motorized

3.3B Back Cntry Winter Motorized

3.3C Back Cntry Summer Motorized

3.5 Back Cntry Rec & Restoration

4.2 Travel Corridor

4.3 Back Cntry Access Corridor

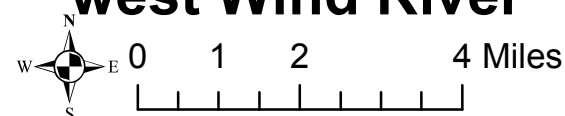
4.5A Kirwin SIA

5.1 Mnqđ Forest & Rangelands

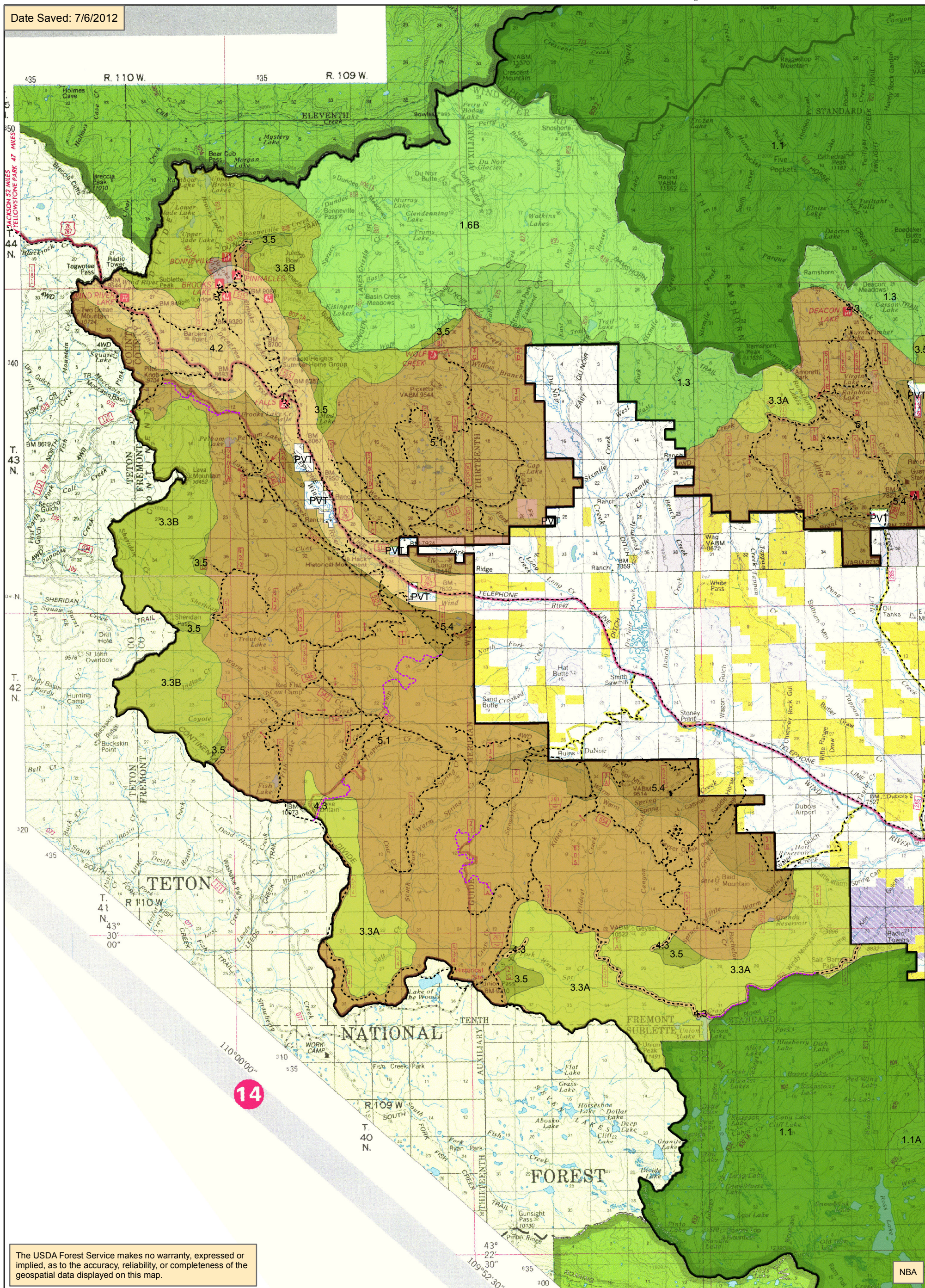
5.2 Public Water Supply

5.4 Mnqd Big Game Crucial Winter Rng

8.2 Ski-based Resort

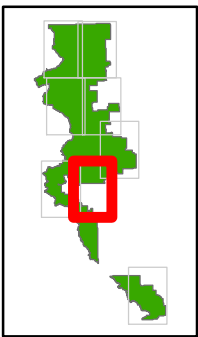


Date Saved: 7/6/2012



The USDA Forest Service makes no warranty, expressed or implied, as to the accuracy, reliability, or completeness of the geospatial data displayed on this map.

NBA



- Legend**

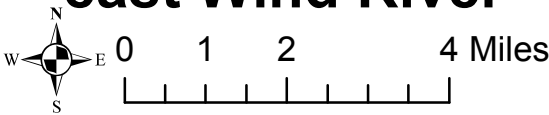
--- Existing Open Road

--- Existing Motorized Trails

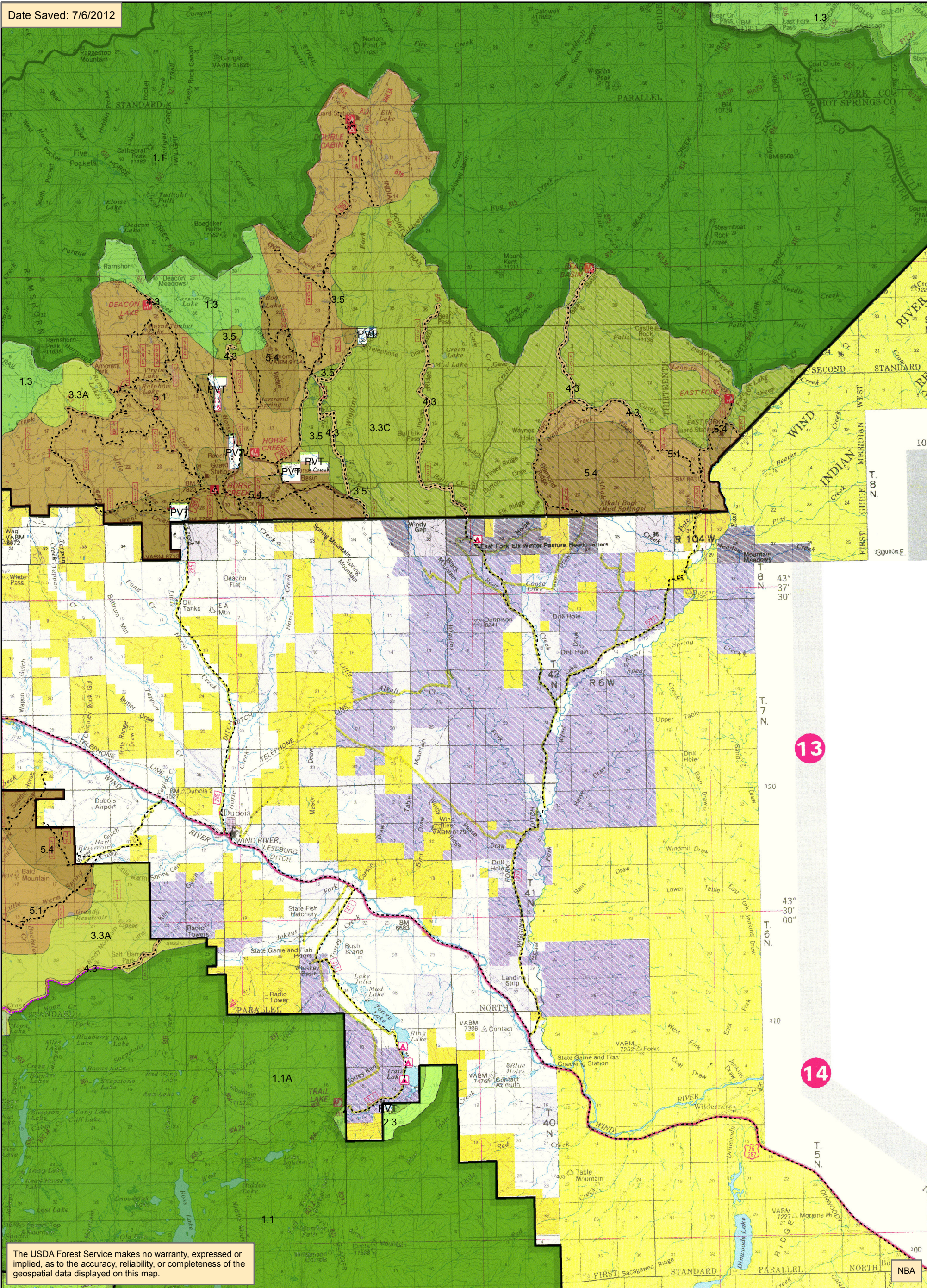
Alt B management area

 - 1.1 Wilderness
 - 1.1A Glacier Addition
 - 1.3 Back Cntry NonMotorized
 - 1.5A Clarks Fork Wild River
 - 1.6A High Lakes WSA
- 1.6B Dunoir SMU
 - 2.2A Line Creek RNA
 - 2.3 Proposed RNA
 - 3.1A Swamp Lake SIA
 - 3.1B Prpsd Little Popo Agie SIA
 - 3.1C Prpsd Sawtooth Peatbeads SIA
 - 3.3A Back Cntry Motorized
 - 3.3B Back Cntry Winter Motorized
 - 3.3C Back Cntry Summer Motorized
- 3.5 Back Cntry Rec & Restoration
 - 4.2 Travel Corridor
 - 4.3 Back Cntry Access Corridor
 - 4.5A Kirwin SIA
 - 5.1 Mngd Forest & Rangelands
 - 5.2 Public Water Supply
 - 5.4 Mngd Big Game Crucial Winter Rng
 - 8.2 Ski-based Resort

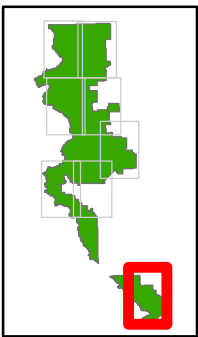
Map 2 (pg 7 of 8)
alternative B
management areas
east Wind River



Date Saved: 7/6/2012



The USDA Forest Service makes no warranty, expressed or implied, as to the accuracy, reliability, or completeness of the geospatial data displayed on this map.



- Legend**
--- Existing Open Road
--- Existing Motorized Trails
Alt B management area
1.1 Wilderness
1.1A Glacier Addition
1.3 Back Cntry NonMotorized
1.5A Clarks Fork Wild River
1.6A High Lakes WSA
- 1.6B Dunoir SMU
2.2A Line Creek RNA
2.3 Proposed RNA
3.1A Swamp Lake SIA
3.1B Prpsd Little Popo Agie SIA
3.1C Prpsd Sawtooth Peatbeads SIA
3.3A Back Cntry Motorized
3.3B Back Cntry Winter Motorized
3.3C Back Cntry Summer Motorized
- 3.5 Back Cntry Rec & Restoration
4.2 Travel Corridor
4.3 Back Cntry Access Corridor
4.5A Kirwin SIA
5.1 Mngd Forest & Rangelands
5.2 Public Water Supply
5.4 Mngd Big Game Crucial Winter Rng
8.2 Ski-based Resort

Map 2 (pg 8 of 8)
alternative B
management areas
Washakie

