

- Legend**

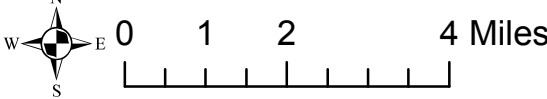
--- Existing Open Road

--- Existing Motorized Trails

**Alt D management area**

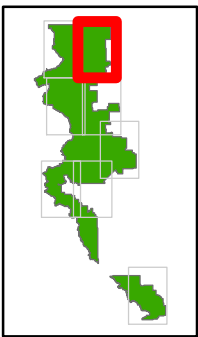
  - 1.1 Wilderness
  - 1.1A Glacier Addition
  - 1.2 Recmnd Wilderness
  - 1.2B Recmnd Dunoir Wldrns
  - 1.3 Back Cntry NonMotorized
- 1.5A Clarks Fork Wild River
  - 1.6A High Lakes WSA
  - 2.2A Line Creek RNA
  - 2.3 Proposed RNA
  - 3.1A Swamp Lake SIA
  - 3.1B Prpsd Little Popo Agie SIA
  - 3.1C Prpsd Sawtooth Peatbeads SIA
  - 3.3A Back Cntry Motorized
  - 3.3B Back Cntry Winter Motorized
- 3.3C Back Cntry Summer Motorized
  - 4.2 Travel Corridor
  - 4.3 Back Cntry Access Corridor
  - 4.5A Kirwin SIA
  - 5.1 Mngd Forest & Rangelands
  - 5.2 Public Water Supply
  - 5.4 Mngd Big Game Crucial Winter Rng
  - 8.2 Ski-based Resort

Map 4 (pg 1 of 8)  
alternative D  
management areas  
west Clarks Fork



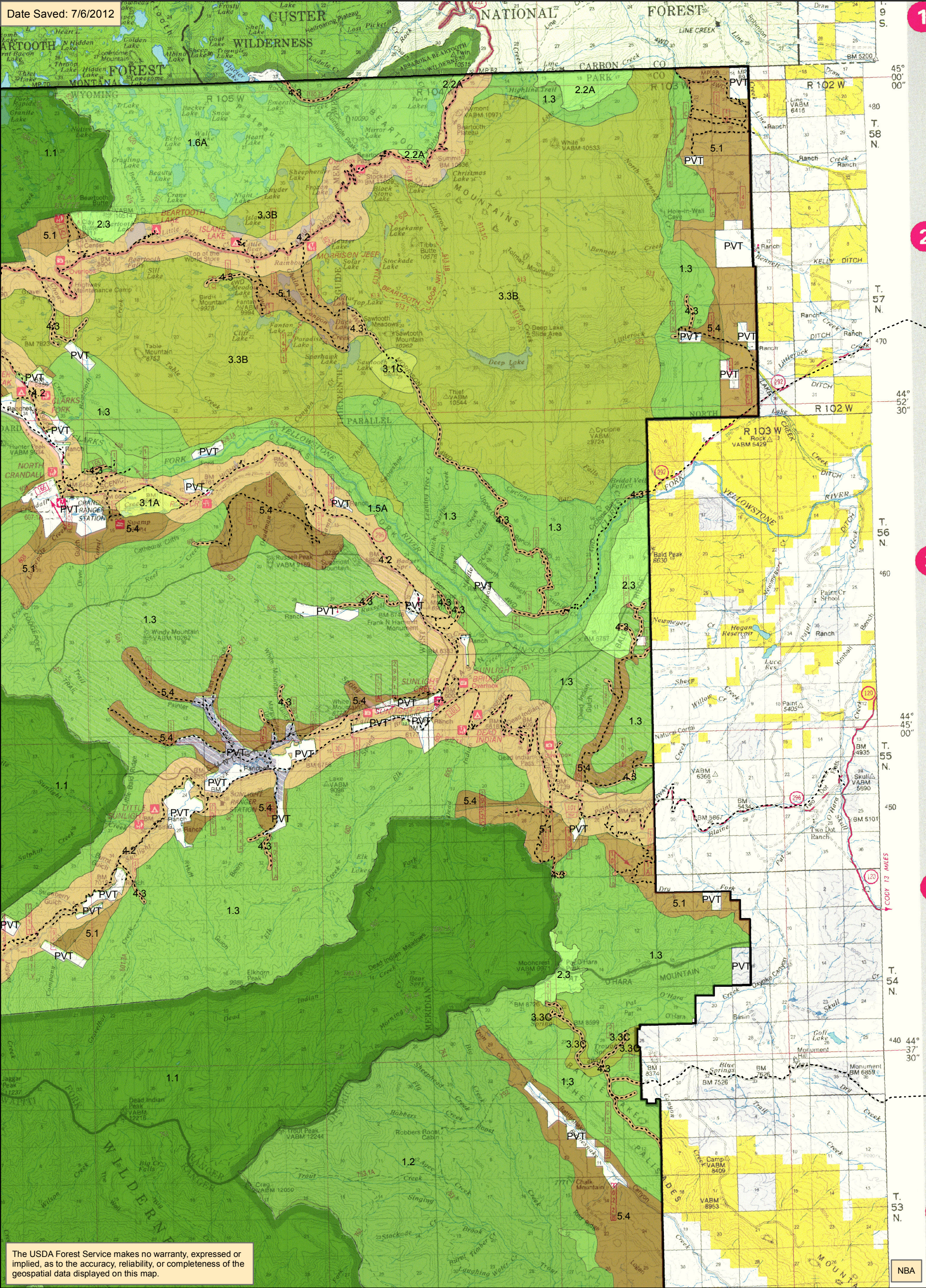
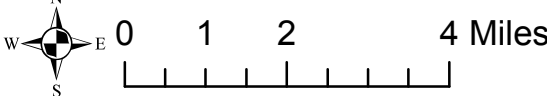
The USDA Forest Service makes no warranty, expressed or implied, as to the accuracy, reliability, or completeness of the geospatial data displayed on this map.



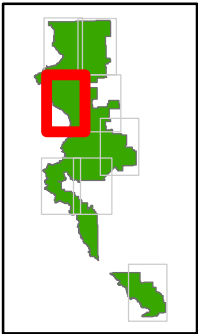


- Legend**  
--- Existing Open Road  
--- Existing Motorized Trails  
**Alt D management area**  
1.1 Wilderness  
1.1A Glacier Addition  
1.2 Recmnd Wilderness  
1.2B Recmnd Dunoir Wldrns  
1.3 Back Cntry NonMotorized
- 1.5A Clarks Fork Wild River  
1.6A High Lakes WSA  
2.2A Line Creek RNA  
2.3 Proposed RNA  
3.1A Swamp Lake SIA  
3.1B Prpsd Little Popo Agie SIA  
3.1C Prpsd Sawtooth Peatbeads SIA  
3.3A Back Cntry Motorized  
3.3B Back Cntry Winter Motorized
- 3.3C Back Cntry Summer Motorized  
4.2 Travel Corridor  
4.3 Back Cntry Access Corridor  
4.5A Kirwin SIA  
5.1 Mngrd Forest & Rangelands  
5.2 Public Water Supply  
5.4 Mngrd Big Game Crucial Winter Rng  
8.2 Ski-based Resort

Map 4 (pg 2 of 8)  
alternative D  
management areas  
east Clarks Fork







Legend

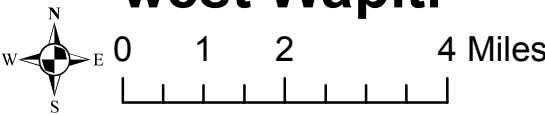
- Existing Open Road

--- Existing Motorized Trails

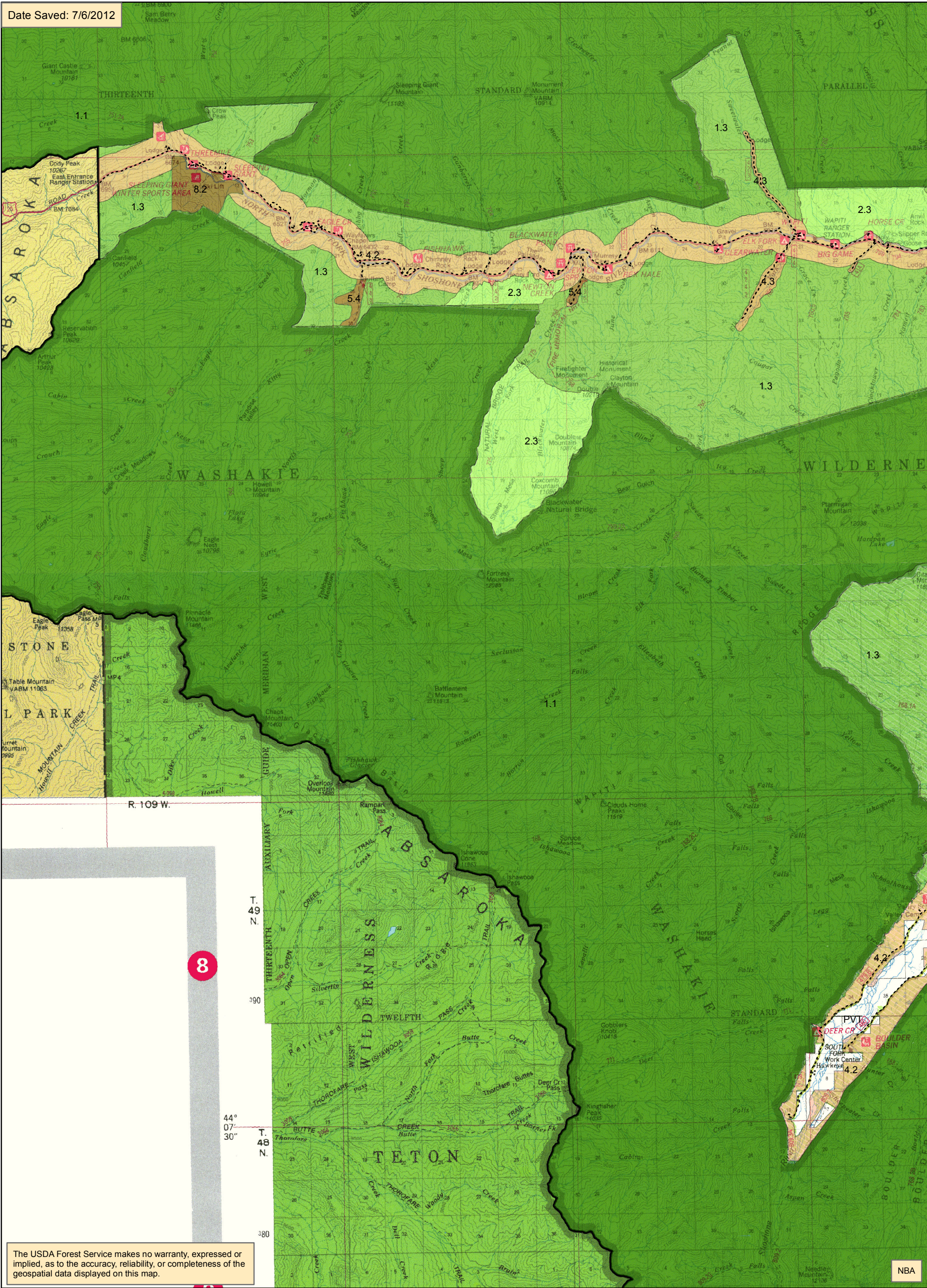
**Alt D management area**

  - 1.1 Wilderness
  - 1.1A Glacier Addition
  - 1.2 Recmnd Wilderness
  - 1.2B Recmnd Dunoir Wldrns
  - 1.3 Back Cntry NonMotorized
- 1.5A Clarks Fork Wild River
  - 1.6A High Lakes WSA
  - 2.2A Line Creek RNA
  - 2.3 Proposed RNA
  - 3.1A Swamp Lake SIA
  - 3.1B Prpsd Little Popo Agie SIA
  - 3.1C Prpsd Sawtooth Peatbeads SIA
  - 3.3A Back Cntry Motorized
  - 3.3B Back Cntry Winter Motorized
- 3.3C Back Cntry Summer Motorized
  - 4.2 Travel Corridor
  - 4.3 Back Cntry Access Corridor
  - 4.5A Kirwin SIA
  - 5.1 Mngd Forest & Rangelands
  - 5.2 Public Water Supply
  - 5.4 Mngd Big Game Crucial Winter Rng
  - 8.2 Ski-based Resort

Map 4 (pg 3 of 8)  
alternative D  
management areas  
west Wapiti



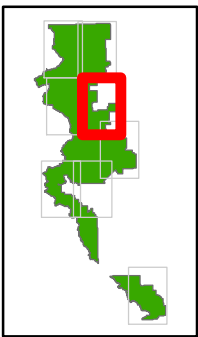
Date Saved: 7/6/2012



The USDA Forest Service makes no warranty, expressed or implied, as to the accuracy, reliability, or completeness of the geospatial data displayed on this map.

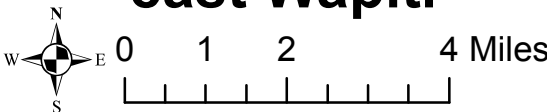
NBA



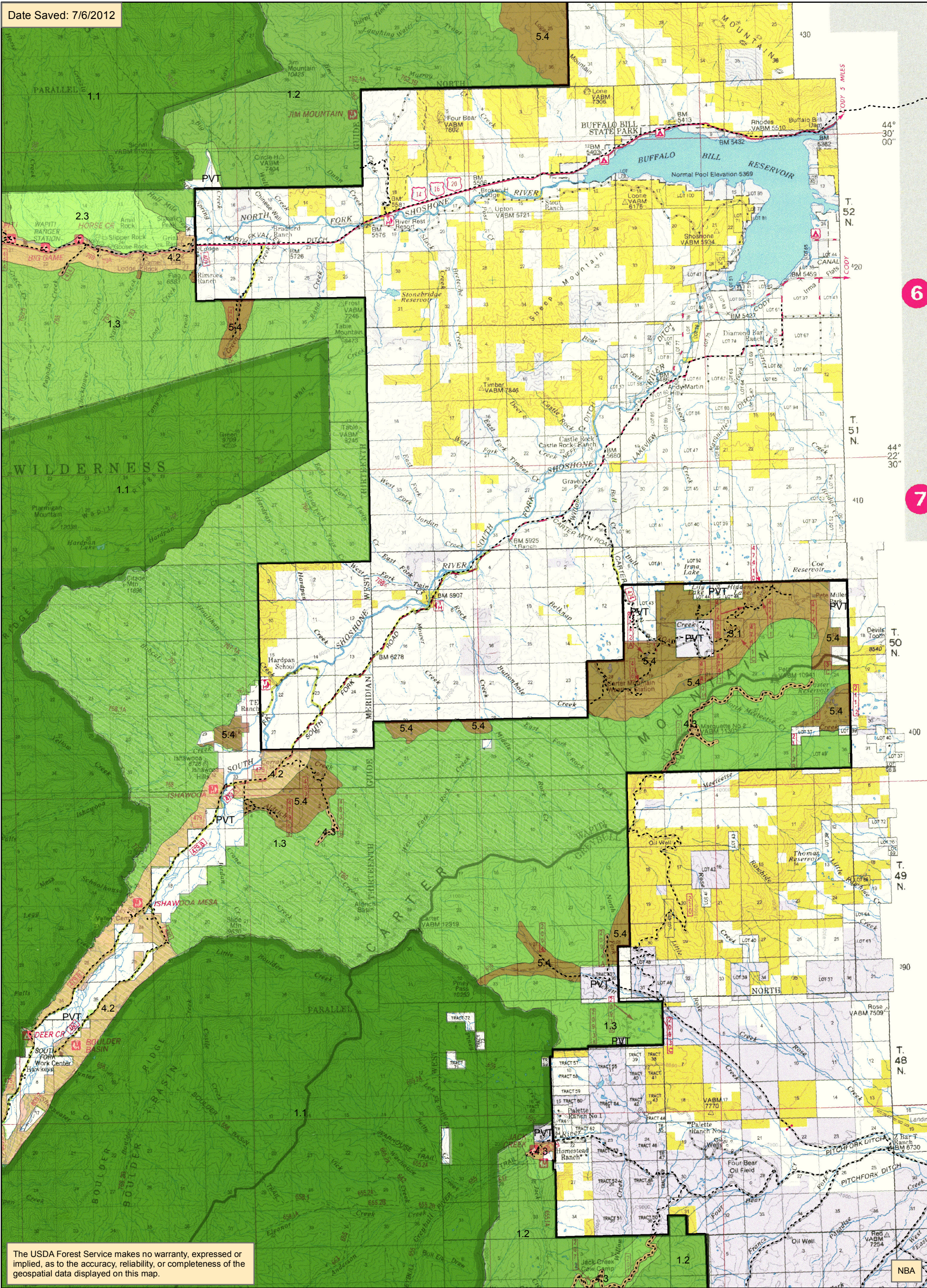


- Legend**  
--- Existing Open Road  
--- Existing Motorized Trails  
**Alt D management area**  
1.1 Wilderness  
1.1A Glacier Addition  
1.2 Recmnd Wilderness  
1.2B Recmnd Dunoir Wldrns  
1.3 Back Cntry NonMotorized
- 1.5A Clarks Fork Wild River  
1.6A High Lakes WSA  
2.2A Line Creek RNA  
2.3 Proposed RNA  
3.1A Swamp Lake SIA  
3.1B Prpsd Little Popo Agie SIA  
3.1C Prpsd Sawtooth Peatbeads SIA  
3.3A Back Cntry Motorized  
3.3B Back Cntry Winter Motorized
- 3.3C Back Cntry Summer Motorized  
4.2 Travel Corridor  
4.3 Back Cntry Access Corridor  
4.5A Kirwin SIA  
5.1 Mngd Forest & Rangelands  
5.2 Public Water Supply  
5.4 Mngd Big Game Crucial Winter Rng  
8.2 Ski-based Resort

Map 4 (pg 4 of 8)  
alternative D  
management areas  
east Wapiti



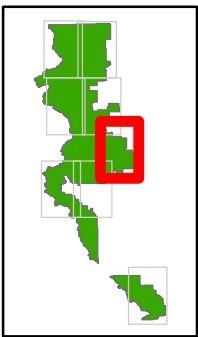
Date Saved: 7/6/2012



The USDA Forest Service makes no warranty, expressed or implied, as to the accuracy, reliability, or completeness of the geospatial data displayed on this map.

NBA





- Legend**

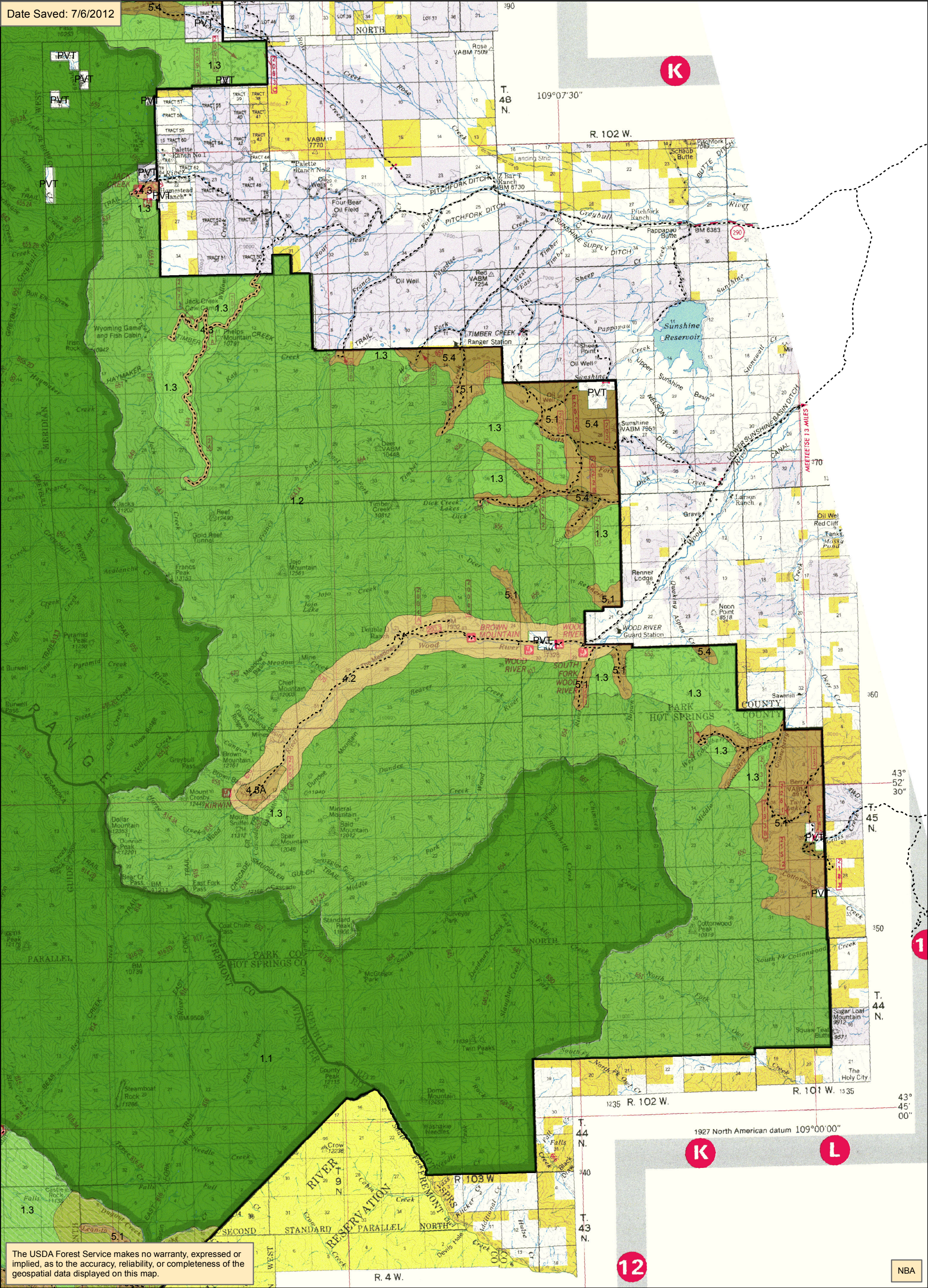
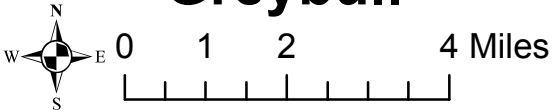
--- Existing Open Road

--- Existing Motorized Trails

**Alt D management area**

  - 1.1 Wilderness
  - 1.1A Glacier Addition
  - 1.2 Recmnd Wilderness
  - 1.2B Recmnd Dunoir Wldrns
  - 1.3 Back Cntry NonMotorized
- 1.5A Clarks Fork Wild River
  - 1.6A High Lakes WSA
  - 2.2A Line Creek RNA
  - 2.3 Proposed RNA
  - 3.1A Swamp Lake SIA
  - 3.1B Prpsd Little Popo Agie SIA
  - 3.1C Prpsd Sawtooth Peatbeads SIA
  - 3.3A Back Cntry Motorized
  - 3.3B Back Cntry Winter Motorized
- 3.3C Back Cntry Summer Motorized
  - 4.2 Travel Corridor
  - 4.3 Back Cntry Access Corridor
  - 4.5A Kirwin SIA
  - 5.1 Mngd Forest & Rangelands
  - 5.2 Public Water Supply
  - 5.4 Mngd Big Game Crucial Winter Rng
  - 8.2 Ski-based Resort

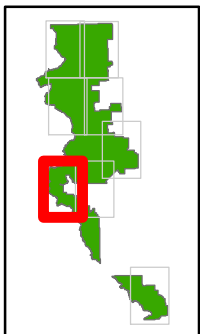
Map 4 (pg 5 of 8)  
alternative D  
management areas  
Greybull



The USDA Forest Service makes no warranty, expressed or implied, as to the accuracy, reliability, or completeness of the geospatial data displayed on this map.

NBA





### Legend

- - - Existing Open Road

----- Existing Motorized Trails

**Alt D**  
**management area**

### 1.1 Wilderness

## 1.1A Glacier Addition

## 1.2 Recmnd Wilderness

### 1.2B Recmnd Dunoir Wldrns

### 1.3 Back Cntry NonMotorize

### 1.5A Clarks Fork Wild River

### 1.6A High Lakes WSA

## 2.2A Line Creek RNA

### 2.3 Proposed RNA

### 3.1A Swamp Lake SIA

### 3.1B Prpsd Little Popo Agie SIA

### 3.1C Prosd Sawtooth Peatbeads SIA

### 3.3A Back Cntry Motorized

### 3.3B Back Cntry Winter Motorized

### 3.3C Back Cntry Summer Motorized

## 4.2 Travel Corridor

### 4.3 Back Cntry Access Corridor

#### 4.5A Kirwin SIA

## 5.1 Mnqd Forest & Rangelands

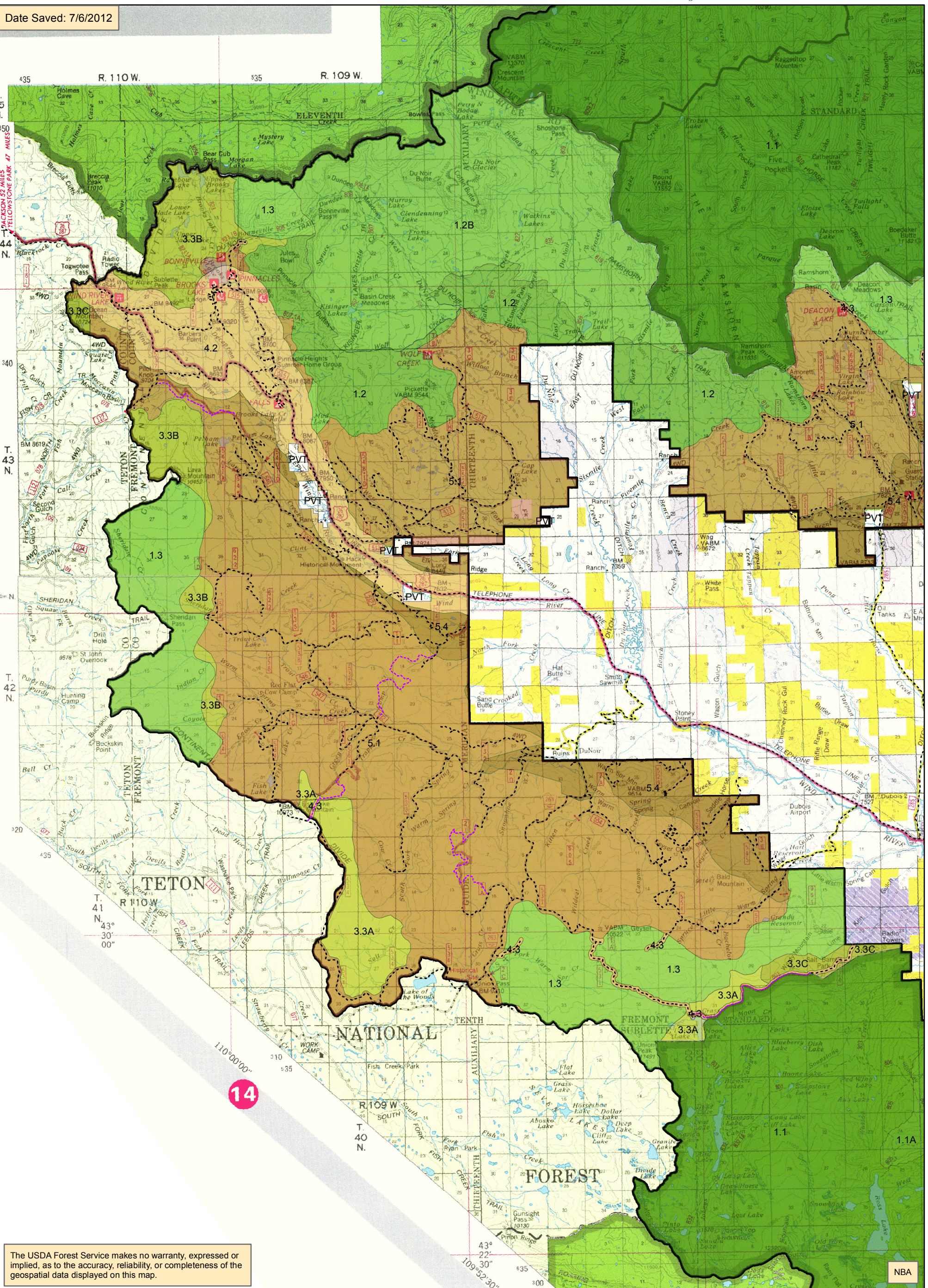
## 5.2 Public Water Supply

#### 5.4 Mnqd Big Game Crucial Winter Rng

## 8.2 Ski-based Resort

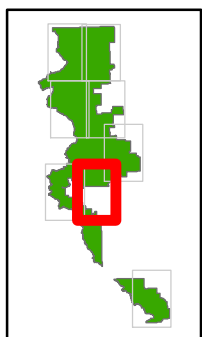


Date Saved: 7/6/2012

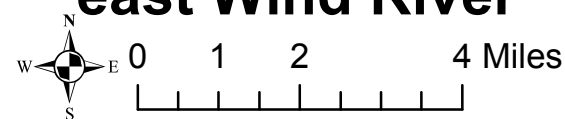


The USDA Forest Service makes no warranty, expressed or implied, as to the accuracy, reliability, or completeness of the geospatial data displayed on this map.





**Map 4 (pg 7 of 8)  
alternative D  
management areas  
east Wind River**



### Legend

- - - Existing Open Road

----- Existing Motorized Trails

**Alt D**  
management area

### 1.1 Wilderness

## 1.1A Glacier Addition

## 1.2 Recmnd Wilderness

### 1.2B Recmnd Dunoir Wldrns

### 1.3 Back Cntry NonMotorize

---

### 1.5A Clarks Fork Wild River

### 1.6A High Lakes WSA

## 2.2A Line Creek RNA

### 2.3 Proposed RNA

### 3.1A Swamp Lake SIA

### 3.1B Prpsd Little Popo Agie SIA

### 3.1C Prpsd Sawtooth Peatbead

### 3.3A Back Cntry Motorized

### 3.3B Back Cntry Winter Motoriz

---

### 3.3C Back Cntry Summer Motorized

## 4.2 Travel Corridor

### 4.3 Back Cntry Access Corridor

#### 4.5A Kirwin SIA

## 5.1 Mngd Forest & Rangelands

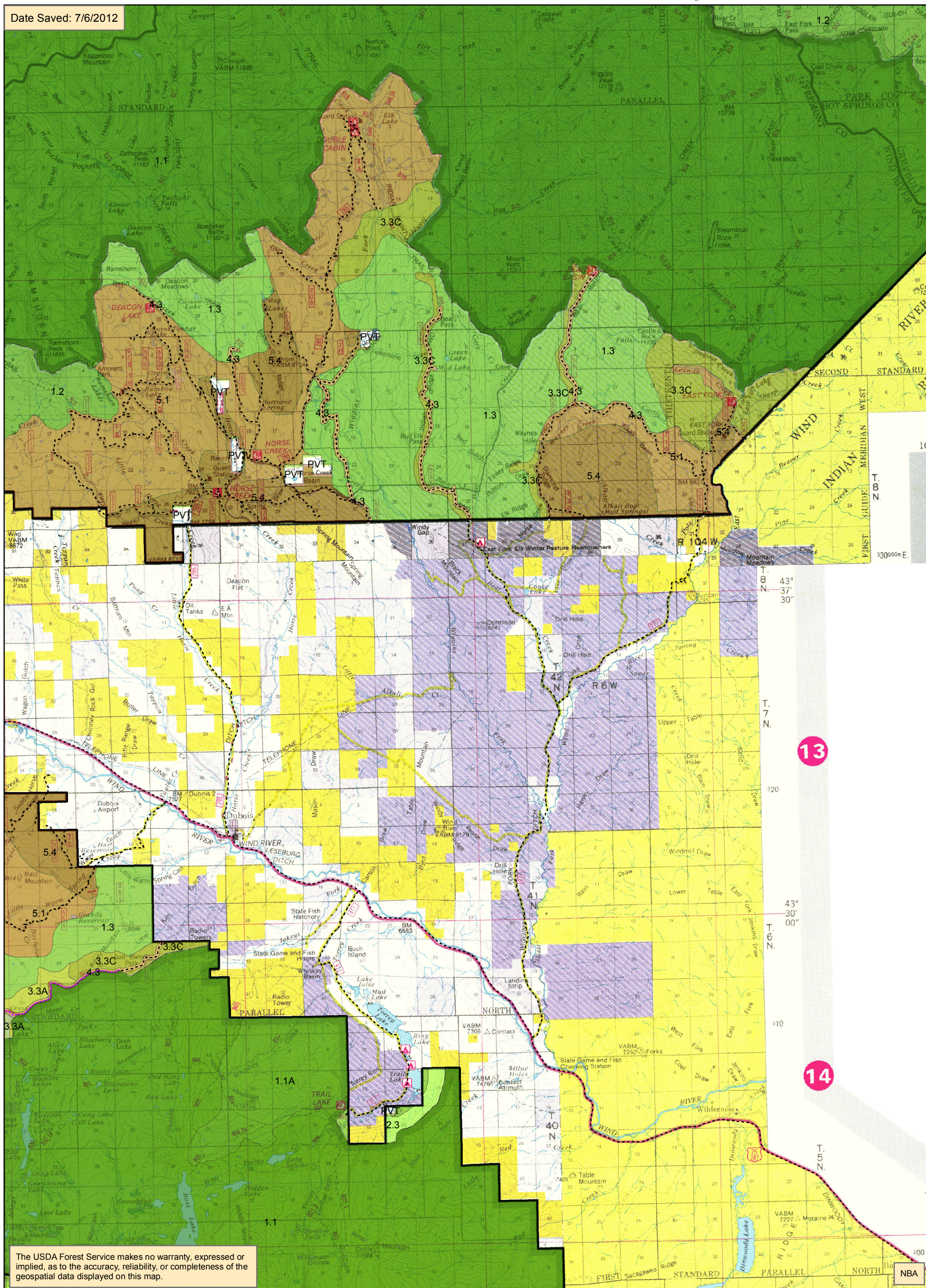
## 5.2 Public Water Supply

#### 5.4 Mngd Big Game Crucial Winter Rng

## 8.2 Ski-based Resort

\_\_\_\_\_

Date Saved: 7/6/2012



The USDA Forest Service makes no warranty, expressed or implied, as to the accuracy, reliability, or completeness of the geospatial data displayed on this map.



### Legend

- - - Existing Open Road  
 - - - Existing Motorized Trails

**Alt D**  
management area

- ☐ 1.1 Wilderness
- ☐ 1.1A Glacier Addition
- ☐ 1.2 Recmnd Wilderness
- ☐ 1.2B Recmnd Dunoir Wld
- ☐ 1.3 Back Cntry NonMoto

- 1.5A Clarks Fork Wild River
- 1.6A High Lakes WSA
- 2.2A Line Creek RNA
- 2.3 Proposed RNA
- 3.1A Swamp Lake SIA
- 3.1B Prpsd Little Popo Agie
- 3.1C Prpsd Sawtooth Peatb
- 3.3A Back Cntry Motorized
- 3.3B Back Cntry Winter Mot

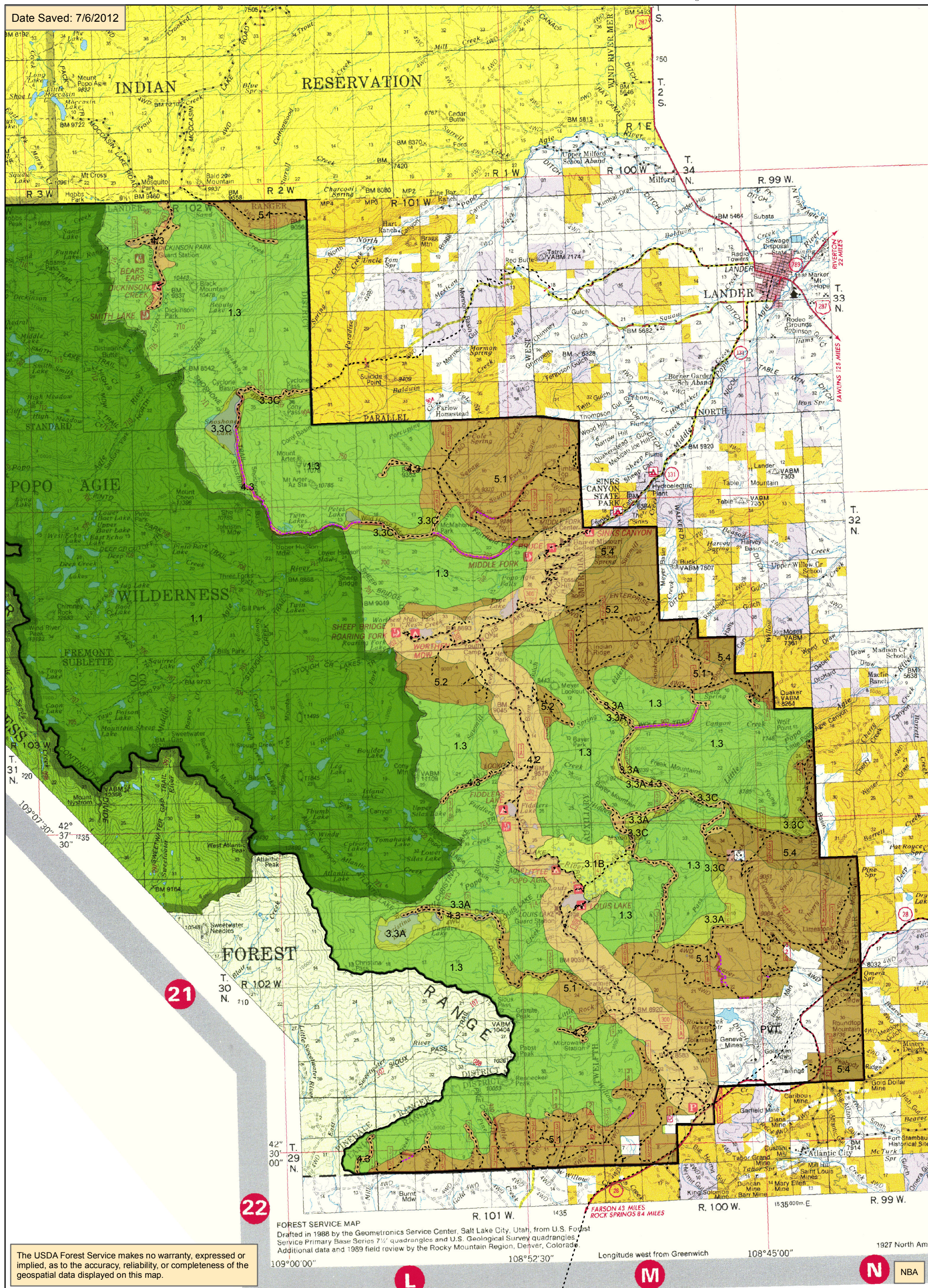
- 3.3C Back Cntry Summer Motorized
- 4.2 Travel Corridor
- 4.3 Back Cntry Access Corridor
- 4.5A Kirwin SIA
- 5.1 Mngd Forest & Rangelands
- 5.2 Public Water Supply
- 5.4 Mngd Big Game Crucial Winter Rng
- 8.2 Ski-based Resort

**Map 4 (pg 8 of 8)  
alternative D  
management areas  
Washakie**



0      1      2              4 Miles

Date Saved: 7/6/2012



The USDA Forest Service makes no warranty, expressed or implied, as to the accuracy, reliability, or completeness of the geospatial data displayed on this map.

FOREST SERVICE MAP  
Drafted in 1988 by the Geomtronics Service Center, Salt Lake City, Utah, from U.S. Forest Service Primary Base Series 7 1/2' quadrangles and U.S. Geological Survey quadrangles. Additional data and 1989 field review by the Rocky Mountain Region, Denver, Colorado.

Longitude west from Greenwich

108°45'00"

1927 North Ame

NBA