

RECREATIONAL TARGET SHOOTING PROHIBITED

CHERRY CREEK- OJAI RANGER DISTRICT

LOS PADRES NATIONAL FOREST



Recreation Target Shooting Prohibited-Cherry Creek

In order to comply with the United States District Court's Order, dated June 27, 2011, the following act is prohibited within the Cherry Creek Drainage of the Ojai Ranger District:

Discharging a firearm, air rifle, or gas gun within the Cherry Creek Drainage. The boundary of the Cherry Creek Drainage begins at the Sespe River, then continues east 0.33 miles on the Sespe River, then continues south along the drainage boundary to the Matilija Creek watershed boundary, then continues west 1.75 miles along the ridgeline, and then continues north along the drainage boundary back to the starting point.

What Prompted This Action

The action prohibiting recreation target shooting in Cherry Creek followed a 2009 federal court decision. The court ordered the Los Padres National Forest to work with the U.S. Fish & Wildlife Service and NOAA Fisheries to complete an amended Biological Opinion to determine if human activities are having an adverse impact on the Southern California steelhead trout, which was listed as an endangered species in 1997.

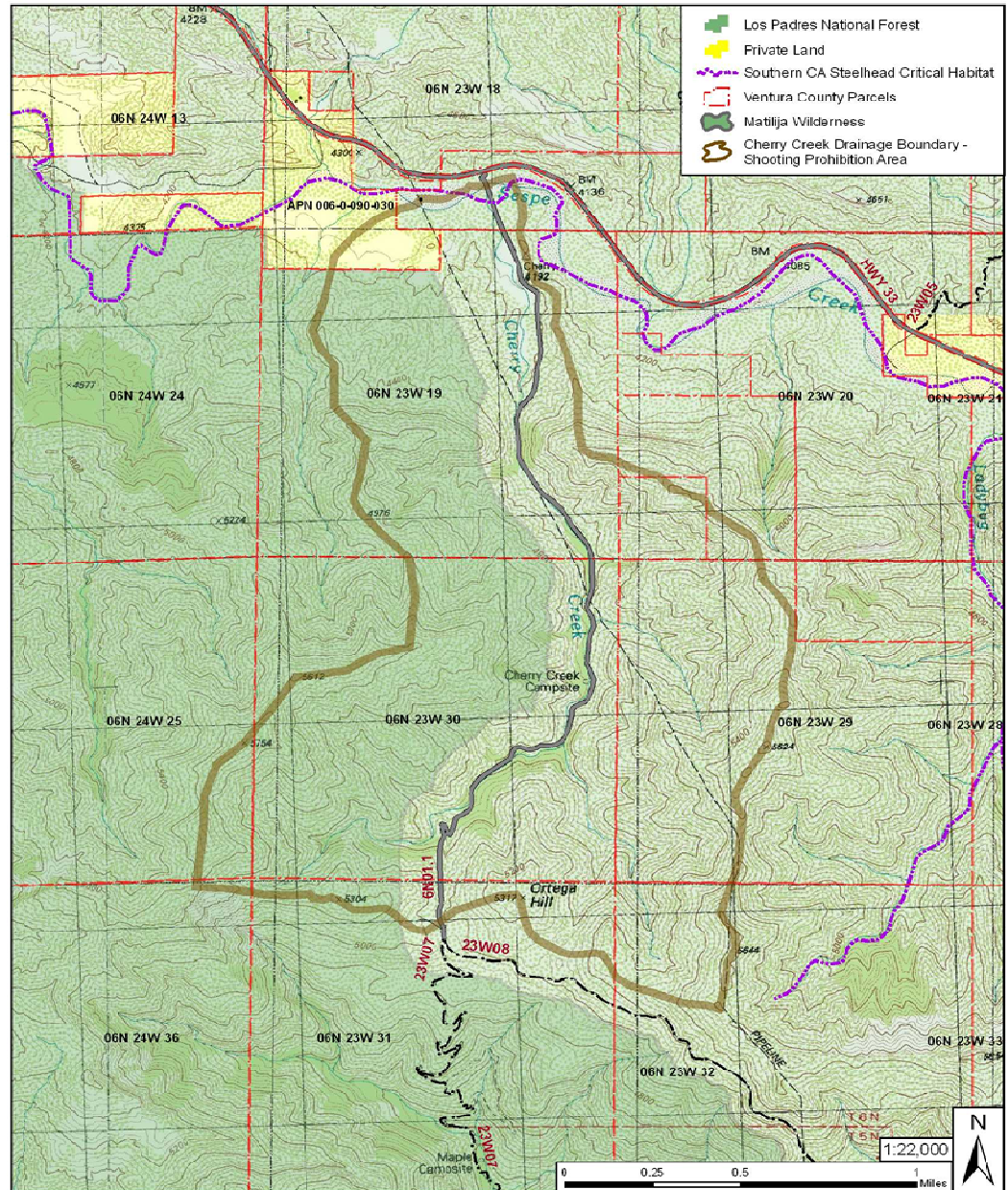
Violators found target shooting in Cherry Creek face a \$5,000 fine or six months imprisonment, or both. This order is effective from July 29, 2011, until rescinded by the Court.

Hunting

The Forest Order does not impact hunting of game in the Cherry Creek area. All hunters are reminded they must be in compliance with California law and possess a valid hunting license.

More Information Contact:

Ojai Ranger Station
1190 East Ojai Avenue
Ojai, CA 93023
805-646-4348 (voice)
805-646-3866 (TDD)
www.fs.fed.us/r5/lospadres



All Are Welcome

The United States Department of Agriculture (USDA) prohibits discrimination in its programs on the basis of race, color, national origin, sex, religion, age, disability, political beliefs, and marital or familial status (not all prohibited bases apply to all programs). Persons with disabilities who require alternative means for communication of program information (braille, large print, audiotape, etc.), should contact USDA's TARGET center at 202-720-2600 (voice and TDD). USDA is an equal opportunity employer.



United States
Department of
Agriculture



Forest Service
Pacific Southwest Region
www.fs.fed.us/r5/lospadres

Los Padres National Forest
Updated August 15, 2011