

Boulder Ranger District  
2140 Yarmouth Avenue  
Boulder, CO 80301  
(303) 541-2500  
FAX: (303) 541-2515



United States Department of Agriculture



## **Devil's Thumb Trail #902**

**Difficulty:** Moderate

**Trail Use:** Heavy

**Length:** Hessie Trailhead (TH) to Jasper Lake - 4.5 miles; Devil's Thumb Lake - 5.5 miles; Continental Divide - 6.5 miles. DISTANCES ARE ONE-WAY.

**Elevation:** 9,000 feet at Hessie TH; 10,814 feet at Jasper Lake; 11,180 feet at Devil's Thumb Lake; 12,000 at High Lonesome Trail; 11,775 feet at Devil's Thumb Pass.

**Open To:** Hiking. Groups of 12 or fewer. Pets must be on a hand-held leash at all times.

### **Access**

- From Nederland, head south on Colorado Highway 119 for 0.5 miles. Turn west onto County Road 130 (Eldora Ski Resort sign). Stay on the main road through the town of Eldora.
- Once the pavement ends, continue for another mile. Look for a sign and vehicles parked above a side road heading sharply down and to the left. This side road leads to Hessie TH and is a cobblestone creek bed that carries water year round. Vehicles without high clearance should park at this junction. From here, it is a 0.25-mile walk to the trailhead.
- This trailhead sees high use, especially on weekends, and parking is limited.

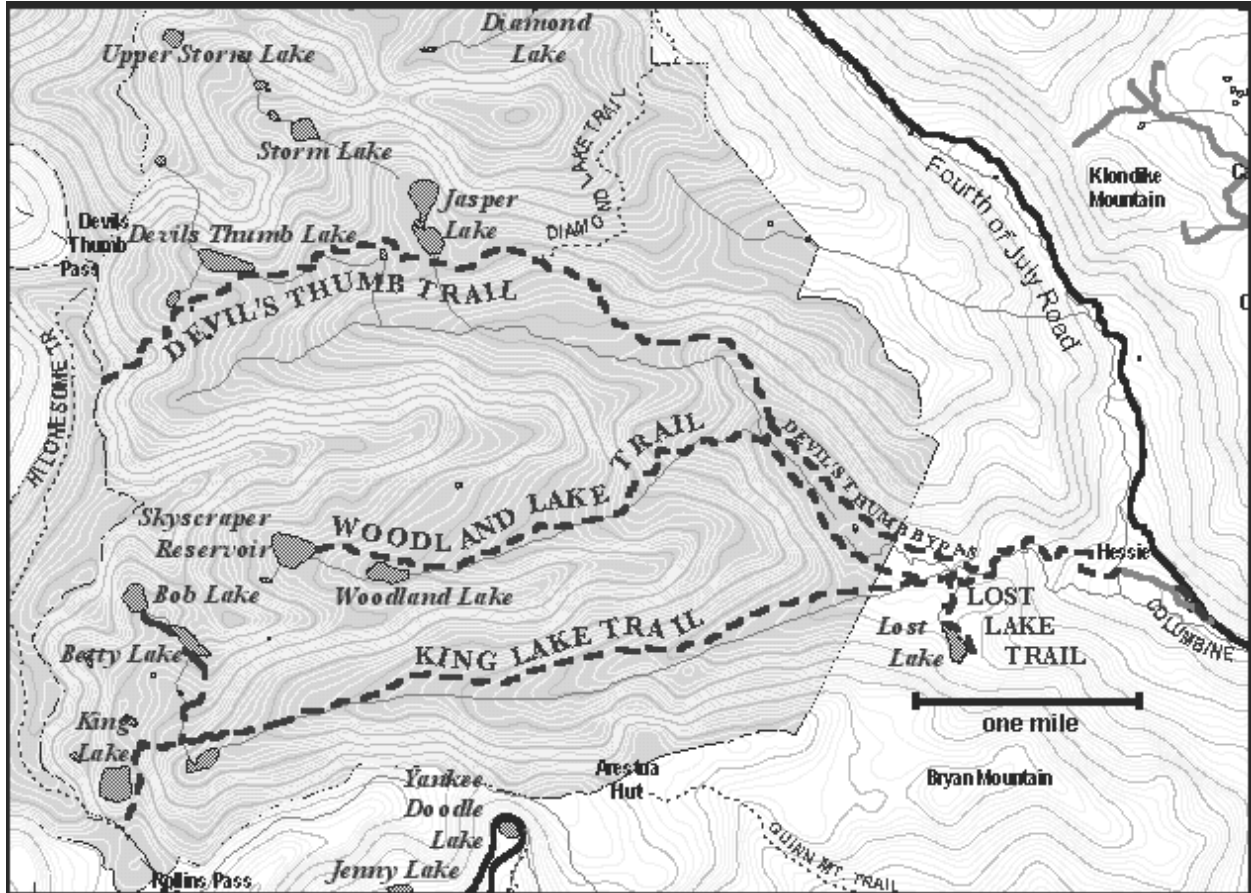
### **Trail Highlights**

- From the trailhead cross the footbridge and take the Devil's Thumb Trail #902, which climbs steeply for about 0.5-miles on an old road. The shorter Devil's Thumb Bypass turns right (north) in 0.8 miles, just before the second bridge and crosses open meadows to the north.
- In 1.5 miles, the Diamond Lake Trail #975 forks right to the north (#975 leads past Diamond Lake to connect to the Arapaho Pass Trail). From the Diamond Lake Trail junction it is another 0.6 miles to Jasper Lake, a very popular camping area with limited, designated sites.
- The trail continues for a mile to Devil's Thumb Lake. Several switchbacks lead up the steep side of a ridge to reach the Continental Divide. Snow and ice can be a problem until late July.
- From the top, it is 0.6 miles to the north to Devil's Thumb Pass and three miles to the King Lake Trail #901. It is not difficult to see the High Lonesome Trail below and west of the Devil's Thumb Trail. Finding the Devil's Thumb Trail from the High Lonesome Trail is challenging.

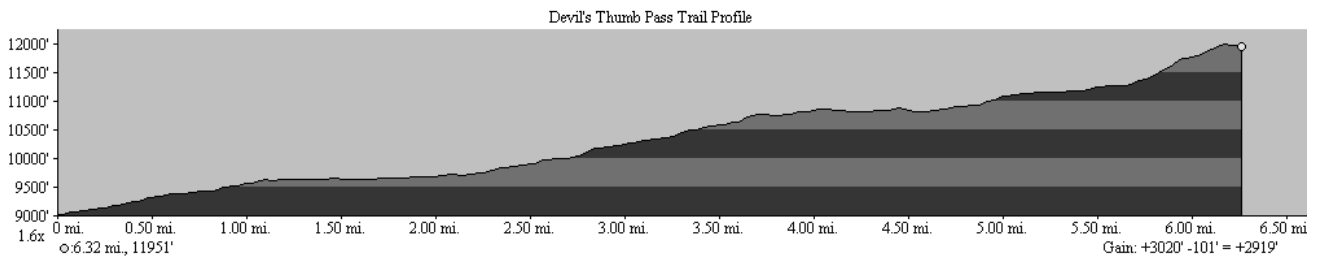
### **Important Information**

- CAMPFIRES ARE NOT ALLOWED. PERMITS REQUIRED FOR OVERNIGHT STAYS INSIDE THE INDIAN PEAKS WILDERNESS FROM JUNE 1 - SEPTEMBER 15.
- CAMPING AT JASPER LAKE IS LIMITED TO DESIGNATED SITES ONLY.
- Additional permit requirements exist for large (8-12 persons) and organized groups. Groups of more than 12 are not permitted. Packstock restrictions apply.
- The Hessie Trailhead may not be accessible by vehicle during the winter months.

# Trail Map & Profile



This map is intended as a general guide only and not for actual land navigation.



For More Information:  
 Boulder Ranger District  
 2140 Yarmouth Avenue  
 Boulder, CO 80301  
 (303) 541-2500

USDA is an equal opportunity provider and employer.