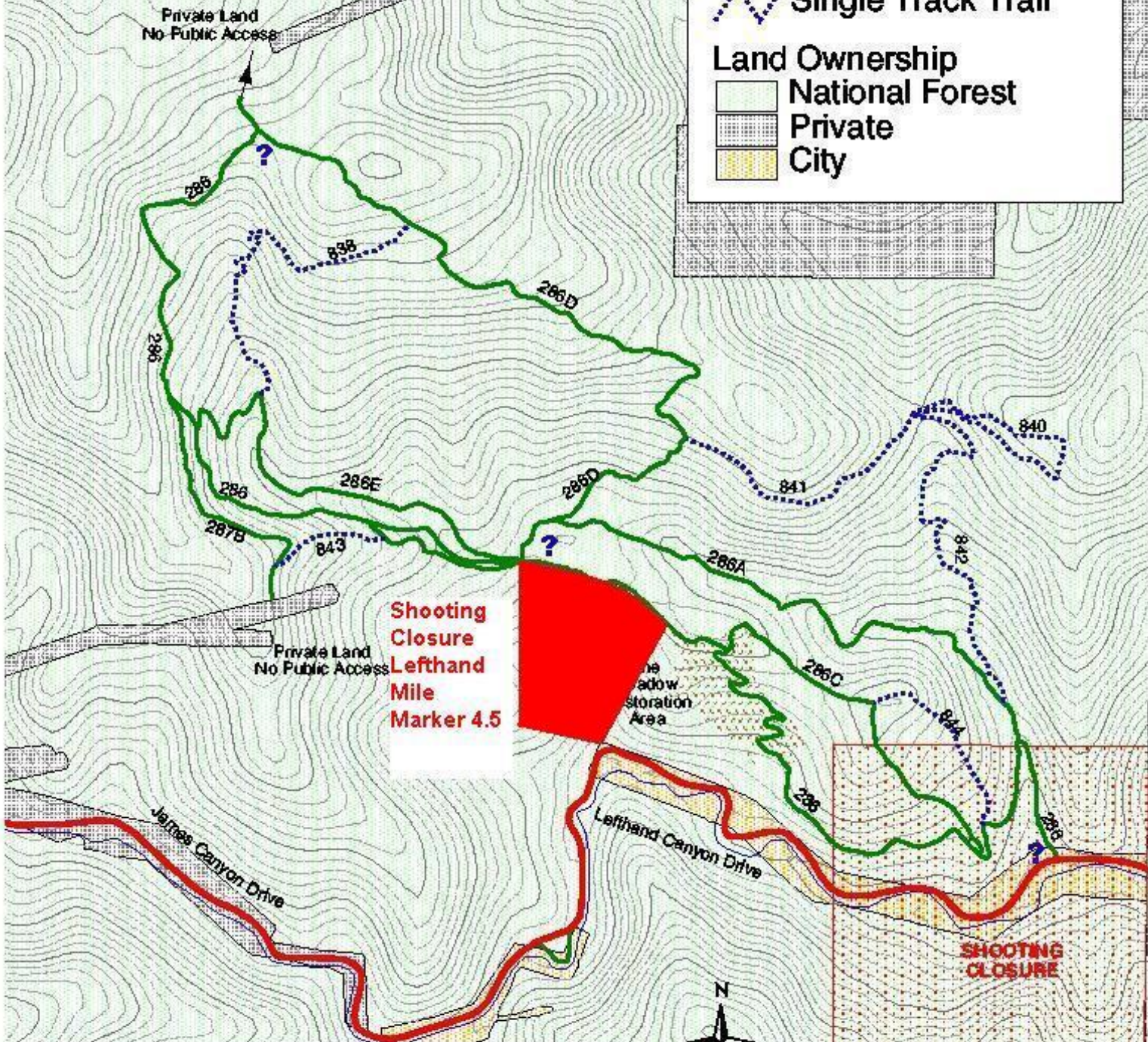


Lefthand OHV Area

Legend

- ? Information Kiosk
- Routes**
- ▬ Paved Road
- ▬ Four Wheel Drive
- ⋯ Single Track Trail
- Land Ownership**
- National Forest
- Private
- City



**Shooting Closure
Lefthand
Mile
Marker 4.5**

SHOOTING CLOSURE



Disclaimer:
ATTENTION:
 This product is reproduced from geographic information prepared by the U.S. Department of Agriculture, Forest Service. By viewing the contents of this package or taking receipt of these services electronic file transfer methods, you warrant that the data shown on this product is in default condition. Reproduced features may not be in an accurate geographic location. The Forest Service makes no expressed or implied warranty, including warranty of merchantability or fitness, with respect to the character, condition, or capabilities of the data on these applications for any user's purposes. The Forest Service reserves the right to correct, update, modify, or replace the geographic information contained on these applications, and if necessary in conjunction with other federal, state or local public agencies or the public information requested by policy or regulation. Previous editions of this product may not be available unless required by policy or regulation. For more information, contact:

Aspen and Roseville National Forest
 Forest Management Section
 240 West Prospect Road
 Ft Collins, CO 80524
 970498-1100

