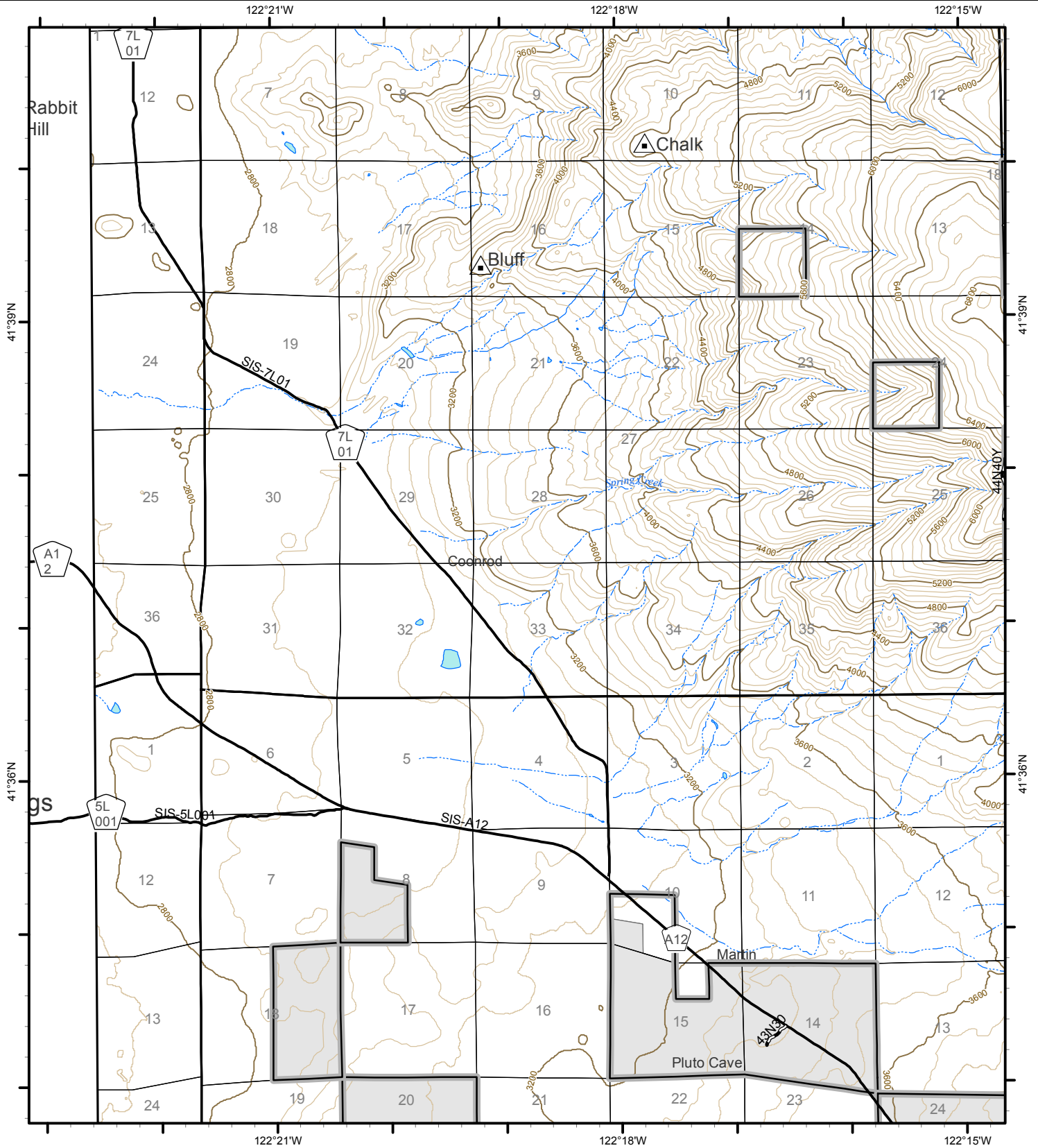




# Klamath National Forest - East Side Travel Map

Map Number 15 of 25



1	2	3	4		
5	6	7	8		
9	10	11	12	13	14
15	16	17	18	19	20
21	22	23	24	25	

### MVUM Roads

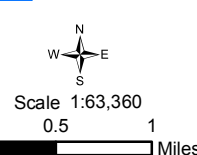
- Roads Open to All Vehicles, Yearlong
- Roads Open to All Vehicles, Seasonal
- Roads Open to Highway Legal Vehicles Only, Yearlong
- Roads Open to Highway Legal Vehicles Only, Seasonal

### MVUM Trails

- Trails Open to All Vehicles, Yearlong
- Trails Open to Vehicles 50' or Less in Width, Yearlong

- Non-Motorized Trail
- National Forest Boundary
- Non-National Forest System Lands with the National Forest
- National Forest System Lands
- Township/Section
- Mountain Peak

- Trailhead
- Snowmobile Park
- Campground
- Picnic Site
- Visitor Center
- Intermittent
- Perennial
- Lake



Some roads are **not displayed** on this map because they are unavailable for public use (i.e. private roads, roads closed for natural resource reasons). Keep this in mind as you travel through the forest. This map is a companion to the Klamath National Forest Motor Vehicle Use Map (MVUM), which explains where, when, and what types of motor uses are allowed on the National Forest. It is the responsibility of the forest visitor to acquire the current Klamath National Forest MVUMs, which are available at no cost from Forest offices, and printable from the Klamath National Forest Web Page: [www.fs.usda.gov/klamath](http://www.fs.usda.gov/klamath). 2/22/2016