

# German Ridge Trail



USDA Forest Service

Hoosier National Forest

1/2013

## Description

Approximate Length: 24 miles. In addition, the German Ridge Hiking Trail is a 1.9 mile trail.

Type: Hiking, Horse riding, and mountain biking. The trail is marked with circles or diamonds.

Special Features: Sandstone rock outcrops and rolling hills of hardwood forests. The Lake Trail has stone steps and winds through rock outcrops and a historic picnic area.

## Etiquette and Rules

Horse riders and mountain bikers (age 17 years and older) are required to have a permit and stay on trails designated for that type of use. Permits are available from our offices and local vendors.

Observe the following trail courtesy:

- Mountain bikers yield to horse riders and hikers.

Make your approach known in advance.

- Hikers yield to horse riders.
- Horse riders control your horse.
- Motorized travel is not permitted.

## Safety

Use caution during hunting seasons. Blaze orange clothing is recommended (do not wear white) during deer season.

If a parking lot is not available where you wish access, be sure your vehicle is well off the road. Many trails intersect roadways. If you choose to use a road as part of your trip, be mindful of traffic.

Ticks and chiggers are common. Avoid tall grass and thick brushy areas.

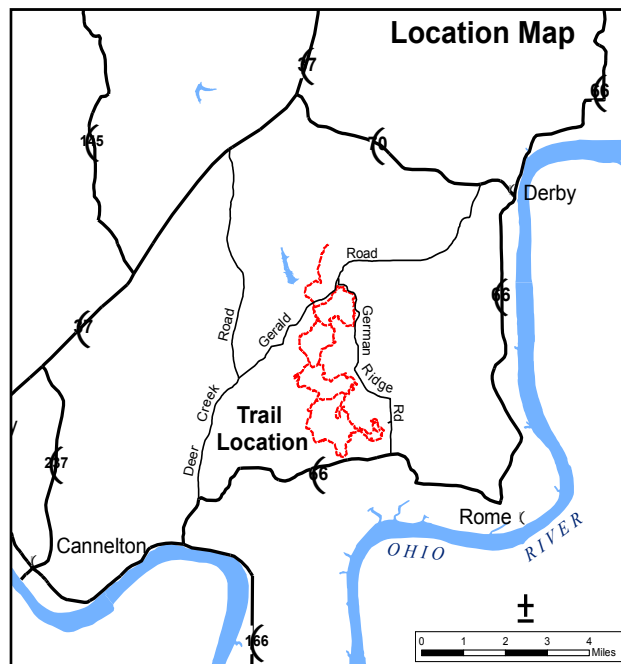
Loose limbs and hazard trees can fall on the trail at anytime, especially on windy days.

## Facilities

A primitive campground has pit toilets (accessible for persons with disabilities), tables, grills, and hitching racks. The campground is designed for horse camping, however, anyone is welcome.

Water for horses is available. The water is not potable for human use. A camping fee is charged. Check the bulletin board for rules and regulations.

A day use beach and historic picnic shelter are also available. This area has three historic buildings constructed by the Civilian Conservation Corps in the 1930s. (Horses are not allowed in the day use area.) The day use parking area is free.



## Emergencies

- Nearest public phone is located at Rocky Point
- The nearest hospital is located in Tell City, IN
- Perry County Sheriff 812-547-7068 or 911
- Indiana Conservation Officers: 812-837-9536

## Directions:

Take SR66 east from Tell City to intersection with Deer Creek Road. Continue east on SR66 east to intersection with German Ridge Road. Head north on German Ridge Road to campground. For day use parking at Carter Bottoms, head north on Deer Creek Road to intersection with Gerald Road. Travel east on Gerald Road to trailhead. Both the day use parking and campground are 6 miles from the intersection of SR66 and Deer Creek Road.

GPS Coordinates for the German Ridge Recreation Area: 37°57'18.427"N, 86°34'52.512"W

## For More Information

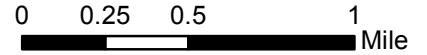
Tell City Ranger District  
248 15th Street  
Tell City, IN 47586  
(812) 547-7051

Toll Free: 1-866-302-4173

[www.fs.usda.gov/hoosier](http://www.fs.usda.gov/hoosier)

Federal Relay Number for the deaf and hearing impaired is: 1-800-877-8339

# German Ridge Trail



Look for these symbols to be sure you are on an official trail:

- Colored Dot or Diamond
- Post with decals

Trails may be color coded to indicate use type:

- Blue - Hiking, Mountain Biking, and Horse Riding
- Yellow - Hiking and Mountain Biking Only
- White - Hiking Only
- Orange - Connector Trail



Large Print  
Copies Available

**ACTIVE TIMBER SALE**  
**USE EXTREME CAUTION**  
Trail is co-located  
with road being used  
by log trucks.

## Legend

- Hike/Bike/Horse Trail
- Hiking Trail Only
- Road
- Stream
- 10' Contour
- Water
- Forest Service
- 0.2 Miles Between Intersections
- Parking
- Camping
- Horse Trailer Parking

