



Wallowa-Whitman National Forest

Wallowa Mountains Visitor Center
201 East 2nd Street P.O. Box 905
Joseph, OR 97846
(541) 426-5546
www.fs.usda.gov/wallowa-whitman

Eagle Cap Wilderness

HURRICANE CREEK TRAIL #1807

TRAIL BEGINNING:

Hurricane Creek Trailhead

TRAIL ENDING:

Intersection with Lake Basin Trail (#1810)

ACCESS:

From Highway #82 in Enterprise, take a right at the junction of Highway #82 and Hurricane Creek Road at the south end of town. Drive approximately 5 miles south of Enterprise to the corner of the Hurricane Creek Grange, then proceed straight ahead on County Road #521 and Forest Road #8205 to the trailhead.

From Joseph, go west on Airport Lane, County Road #774. Drive approximately 2 miles, and then turn left at the Hurricane Creek Grange onto County Road #521 and Forest Road #8205 (approximately 5 miles into trailhead, rough road, RV's not recommended).

ATTRACTIONS:

The Hurricane Creek trail is a major access point for hikers and horses into the Eagle Cap Wilderness. The trailhead has a stock ramp and outhouse facilities. This trail provides access to the Lakes Basin trails. View massive granite and limestone cliffs, waterfalls, and an abundance of wildflowers along the trail. Gradually climb across subalpine meadows alternating with timbered areas. This route will provide you with panoramic views of Sacajawea, Matterhorn and Eagle Cap Peaks. Cross-country hiking in and around the basin provides spectacular views and photographic opportunities. The trail follows the creek so water is plentiful.

The Hurricane Creek trail also provides access to the Falls Creek and Echo/Billy Jones Lakes trails. The trail that takes you to Falls Creek is an easy side hike. Fishing is good in most lakes. You may see mountain goats, bighorn sheep, deer, elk and other smaller mammals. Camping and grazing areas are available but be sure to camp away from the lakes shore in order to protect fragile vegetation. See Eagle Cap Wilderness Regulations.

CONSIDERATIONS:

Northwest Forest Passes are required at Hurricane Creek Trailhead.

This area is subject to flash flooding and at times the road or trail may be blocked at a relatively low elevation. There are several stream crossings until you reach the basin. The trail is heavily used during the summer months.

Wallowa-Whitman National Forest: Email: r6_ww_web_correspondence@fs.fed.us
Eagle Cap/Hells Canyon NRA/Wallowa Valley Ranger District in Joseph, OR: 541-426-5546, 541-426-4978
Hells Canyon NRA in Clarkston, WA: 509-758-0616; **Riggins, ID:** 208-628-3916
Hells Canyon Boat Launch: 541-785-3395
La Grande Ranger District: 541-963-7186
Whitman Ranger District in Baker City, OR: 541-523-6391; **Halfway, OR:** 541-742-7511

Length: 10.1 miles one-way

Distance from Trailhead:

Falls Creek .4 miles

Echo Lake/Billy Jones trail #1824 5.0 miles

Junction w/trail #1810 10.1 miles

Elevation:

Trailhead 5,026'

Pass 7,440'

Lakes Basin 7,600'

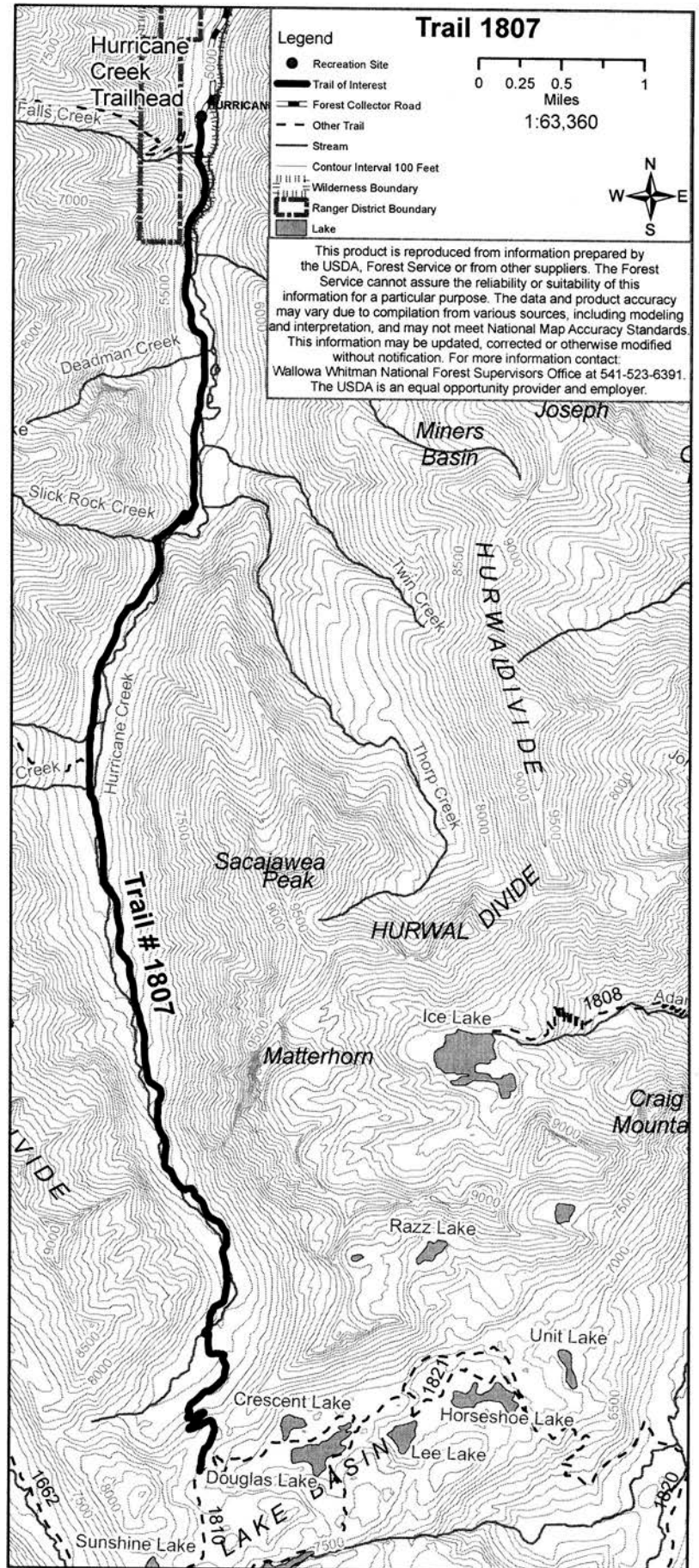
Difficulty: Easy to more difficult

Restrictions: See Eagle Cap Wilderness Regulations

Recommended Season: Summer and fall

**Use: Heavy use in summer and fall
(horses and hikers)**

Wallowa-Whitman National Forest
P.O. Box 907, Baker City, Oregon 97814
Email: r6_ww_web_correspondence@fs.fed.us
Phone 541-523-4476



Please refer to the National Forest map for complete trail system.

TR-125