

# Pioneer Woman's Grave Trail #485



## Recreation Opportunity Guide

Distance..... 1 mile (one way)  
Elevation..... 3720-4160 feet  
Snow Free ..... June to October



**Trail Highlights:** This historical trail is a portion of the old Barlow Road. There are great views of Mount Hood along the short route.

**Trail Description:** This trail starts at Forest Road 3531 (4,160') near Barlow Sno-Park and ends at Forest Road 3531 (3,720'). From Forest Road 3531 heading east, the trail heads down a steep hill for 0.6 mile. The trail levels and continues a further 0.4 mile to its end at Forest Road 3531.

## Regulations & Leave No Trace Information:

### Leave No Trace

- Plan Ahead and Prepare: Prepare for extreme weather, hazards and emergencies.
- Travel and Camp on Durable Surfaces: Use established trails and campsites.
- Dispose of Waste Properly: Pack out all trash, leftover food and litter.
- Leave What You Find: Avoid introducing or transporting non-native species.
- Minimize Campfire Impacts: Use established fire rings & keep fires small.
- Respect Wildlife: Control pets at all times.
- Be Considerate of Other Visitors: Avoid loud voices and noises.

For information on **Leave No Trace**, go to [www.LNT.org](http://www.LNT.org) or call 1-800-332-4100

**For current trail conditions and more recreation information go to:**

<http://www.fs.usda.gov/mthood>

Map and driving directions on next page

Mt. Hood National Forest  
16400 Champion Way  
Sandy, OR 97055  
503-668-1700

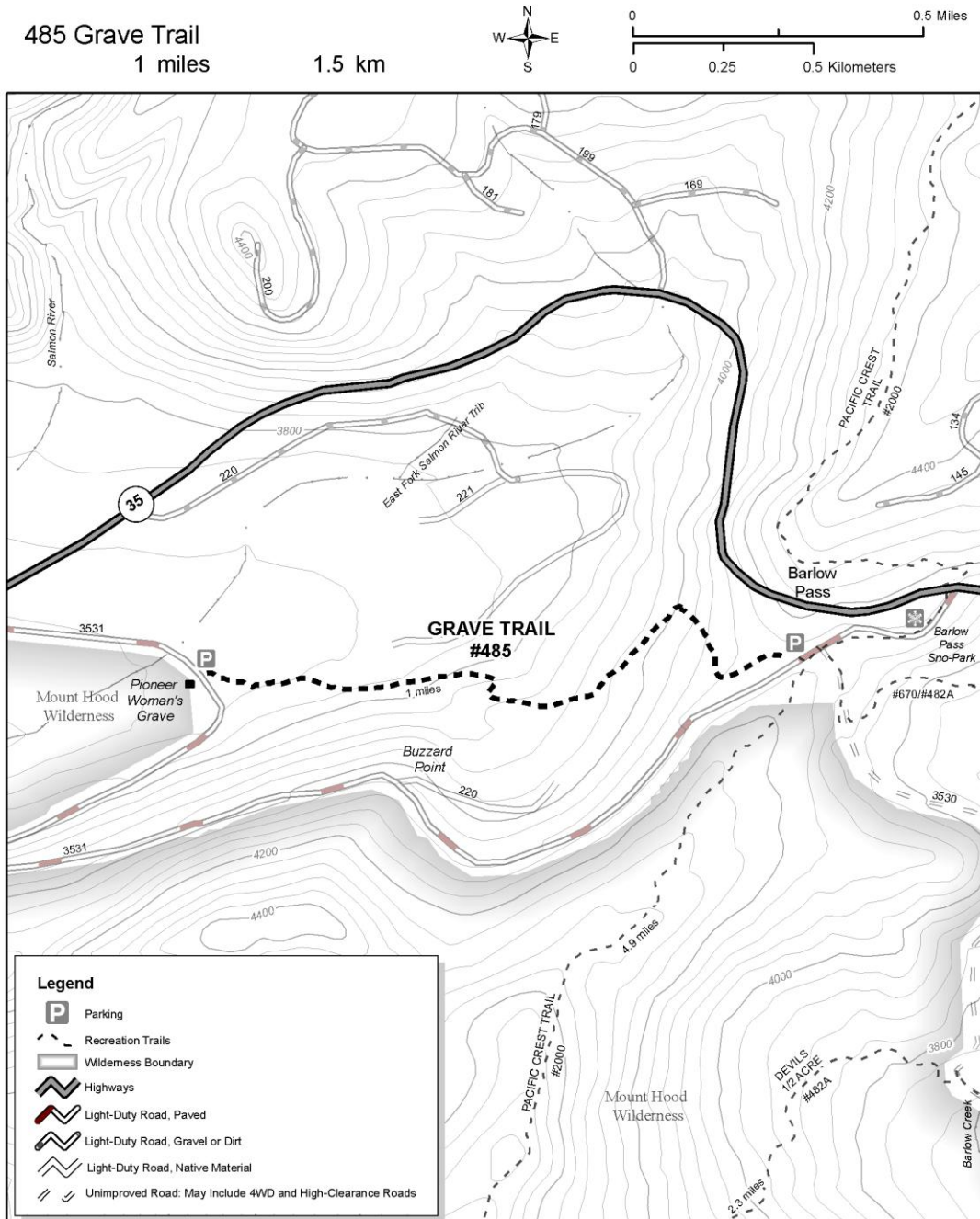
Hood River Ranger District  
6780 Hwy 35  
Parkdale, Oregon 97041  
541-352-6002

The USDA is an equal opportunity provider and employer.



**Directions to Trailhead:** From Hood River, travel 36.2 miles south on Oregon Hwy 35 to Barlow Pass Snopark (Forest Road 3531), approximately 200 feet west of milepost 60. Head down Forest Road 3531 0.2 mile to the trailhead on the right (west) side of the road (approximately 250' past Barlow Road).

From Portland, travel approximately 31 miles east of Sandy on US Hwy 26 to the intersection with Oregon Hwy 35. Turn north onto Oregon Hwy 35 and travel 2.6 miles to Barlow Pass Sno-Park (Forest Road 3531), approximately 200 feet west of milepost 60. Head down Forest Road 3531 0.2 mile to the trailhead on the right (west) side of the road (approximately 250' past Barlow Road).



**Recommended maps:** Hood River Ranger District



